



WWW.GOODMANREALESTATE.COM  
216.381.8200

# MAPLE AVENUE SHOPS

Zanesville, Ohio



## HIGHLIGHTS

- New retail development with approximately 10,333 SF of proposed retail space at a signalized intersection
- Located within 1 mile of Genesis Healthcare System Hospital, Walmart Supercenter, Gabe's, Staples, and Colony Square Mall
- Conveniently located off of Maple Avenue with almost 25,000 vehicles passing the site daily

### • TOP GENERATORS:

**Genesis Healthcare System**  
285 Beds  
2,800 Employees

#### Retailers

Walmart, Gabe's, Staples, T. J. Maxx, Kohl's, Lowe's, The Home Depot, Sam's Club, Hobby Lobby, PetSmart, Aldi, Big Lots, JCPenney, Cinemark, Dunham's Sports, Planet Fitness, Proposed Menards

**Ohio University Zanesville**  
1,279 Students

**Zanesville State College**  
3,145 Students

## DEMOGRAPHICS

POPULATION	3 MILE	5 MILE	7 MILE
2024 Projection	24,502	43,881	55,337
2019 Estimate	24,636	44,241	55,787
INCOME	3 MILE	5 MILE	7 MILE
2019 Average	\$53,038	\$52,472	\$55,095
2019 Median	\$40,235	\$39,191	\$41,392
DAYTIME POPULATION	3 MILE	5 MILE	7 MILE
2019 Employees	19,730	25,942	29,103

## LEASING INFORMATION

www.goodmanrealestate.com  
216.381.8200

### CLEVELAND

THE OFFICES OF LEGACY VILLAGE  
25333 CEDAR ROAD, SUITE 305  
CLEVELAND, OH 44124

### COLUMBUS

389 E. LIVINGSTON AVENUE  
COLUMBUS, OHIO 43215

## DANIEL CLARK

Vice President, Columbus Office  
daniel@goodmanrealestate.com

## JESSICA SONDRERS

Sales Associate, Columbus Office  
jessica@goodmanrealestate.com



# LEASING INFORMATION

www.goodmanrealestate.com

216.381.8200

## DANIEL CLARK

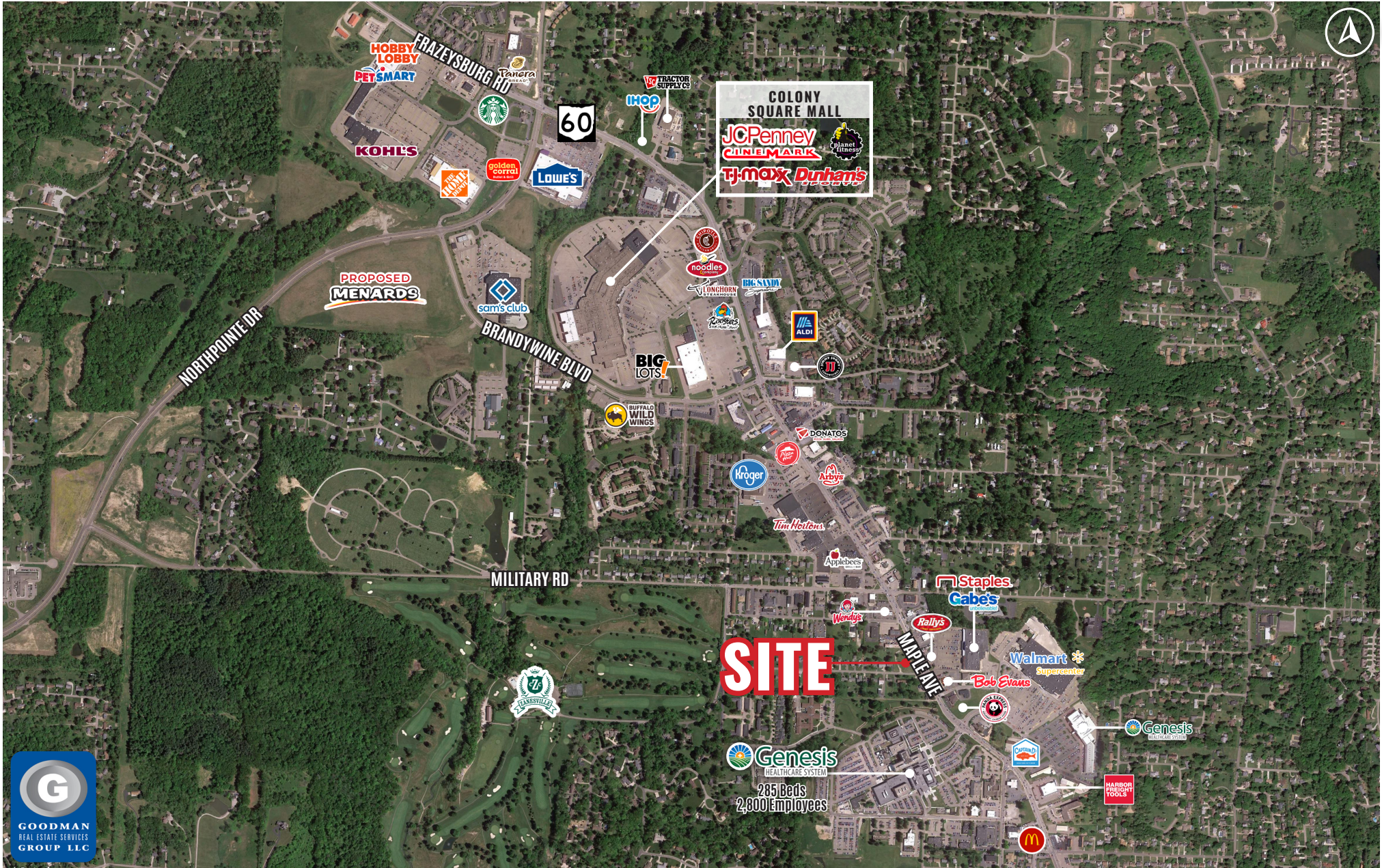
Vice President, Columbus Office  
daniel@goodmanrealestate.com

## JESSICA SONDRERS

Sales Associate, Columbus Office  
jessica@goodmanrealestate.com

# MAPLE AVENUE SHOPS

## Zanesville, Ohio





# MAPLE AVENUE SHOPS

ZANESVILLE, OHIO

Leased Available Negotiating

UNIT	TENANT	SIZE (SQ. FT.)
1	Proposed Retail	6,913
2	Proposed Drive-Thru Restaurant	3,420

SITE SUMMARY 10,333

## LEASING INFORMATION

**DANIEL CLARK**

daniel@goodmanrealestate.com

**JESSICA SONDRERS**

jessica@goodmanrealestate.com

### CLEVELAND

THE OFFICES OF LEGACY VILLAGE  
25333 CEDAR ROAD, SUITE 305  
CLEVELAND, OH 44124

### COLUMBUS

389 EAST LIVINGSTON AVENUE  
COLUMBUS, OH 43215

P 216.381.8200

F 216.381.8211

[WWW.GOODMANREALESTATE.COM](http://WWW.GOODMANREALESTATE.COM)

