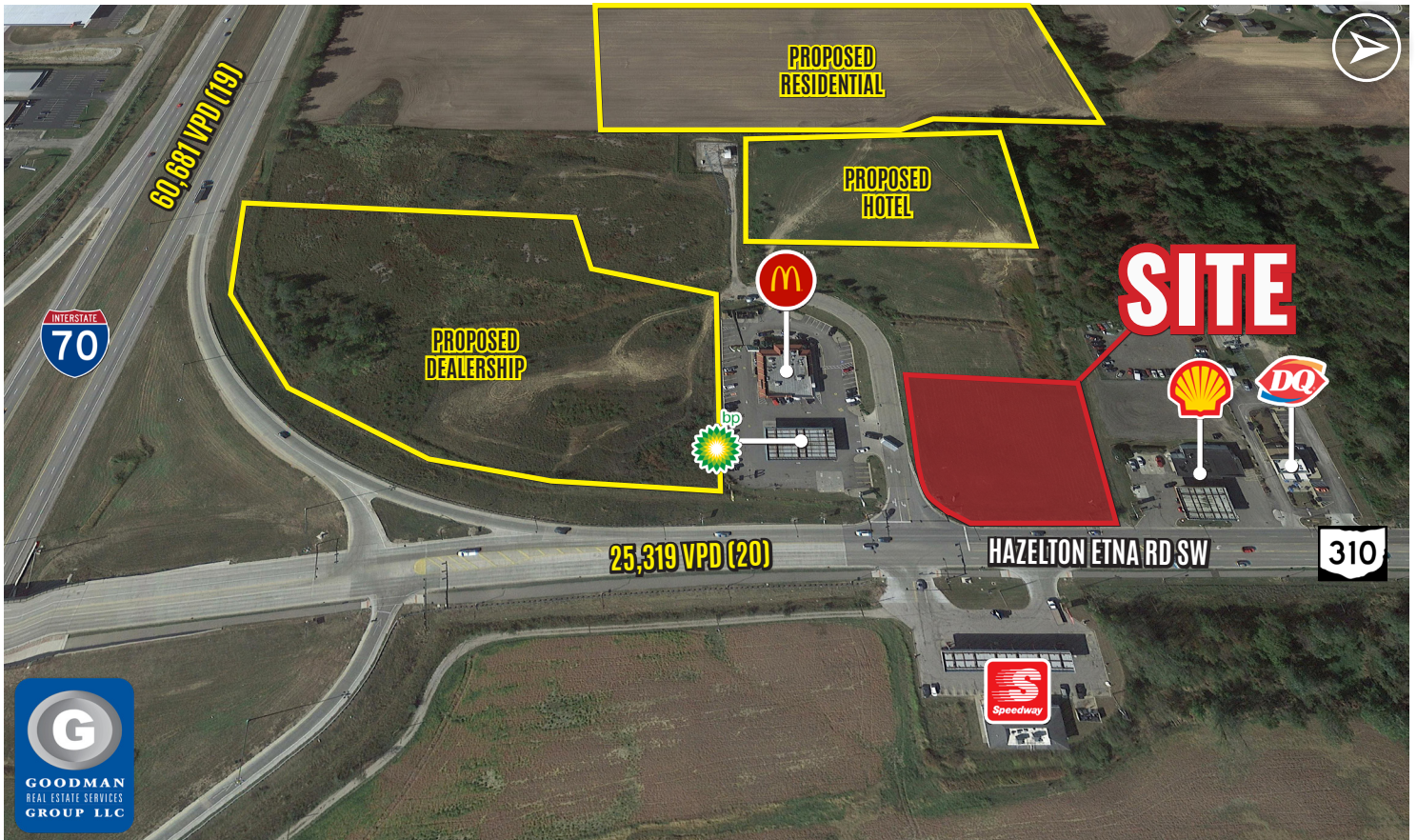




WWW.GOODMANREALESTATE.COM
216.381.8200

JAKE'S CORNER

Etna, Ohio



HIGHLIGHTS

- AVAILABLE: 2,074 SF endcap
- Join Chipotle Mexican Grill
- Easy access and exposure to Interstate 70 and Ohio State Route 310
- Proposed 200+ unit multi-family development nearby
- Serves multiple distribution centers in the area, including new 1M SF Kohl's facility, Ascena Retail Group (1,534 employees), and Amazon (3,496 employees)
- Other companies in the area include Yankee Candle, DHL, and Werner Enterprises

DEMOGRAPHICS

POPULATION	3 MILE	5 MILE	7 MILE
2025 Projection	12,574	49,736	134,346
2020 Estimate	11,715	46,284	125,945
INCOME	3 MILE	5 MILE	7 MILE
2020 Average	\$90,054	\$102,838	\$93,842
2020 Median	\$81,465	\$87,957	\$81,243
DAYTIME POPULATION	3 MILE	5 MILE	7 MILE
2020 Employees	1,681	8,659	29,993

LEASING INFORMATION

www.goodmanrealestate.com
216.381.8200

CLEVELAND

THE OFFICES OF LEGACY VILLAGE
25333 CEDAR ROAD, SUITE 305
CLEVELAND, OH 44124

COLUMBUS

389 E. LIVINGSTON AVENUE
COLUMBUS, OHIO 43215

DANIEL CLARK

daniel@goodmanrealestate.com

JESSICA SONDERS

jessica@goodmanrealestate.com

CHAD HAMRICK

chad@goodmanrealestate.com



LEASING INFORMATION

www.goodmanrealestate.com

216.381.8200

DANIEL CLARK

daniel@goodmanrealestate.com

JESSICA SONDERS

jessica@goodmanrealestate.com

CHAD HAMRICK

chad@goodmanrealestate.com

JAKE'S CORNER

Etna, Ohio





JAKE'S CORNER

Etna, Ohio

KEY	LEASED	NEGOTIATING
	AVAILABLE	NOT PART

UNIT	TENANT	SIZE (SQ. FT.)
1	Negotiating	2,325
2	Negotiating	2,400
3	Available	2,074
SITE SUMMARY		6,799

LEASING INFORMATION

DANIEL CLARK

daniel@goodmanrealestate.com

JESSICA SONDERS

jessica@goodmanrealestate.com

CHAD HAMRICK

chad@goodmanrealestate.com

CLEVELAND

THE OFFICES OF LEGACY VILLAGE
25333 CEDAR ROAD, SUITE 305
CLEVELAND, OH 44124

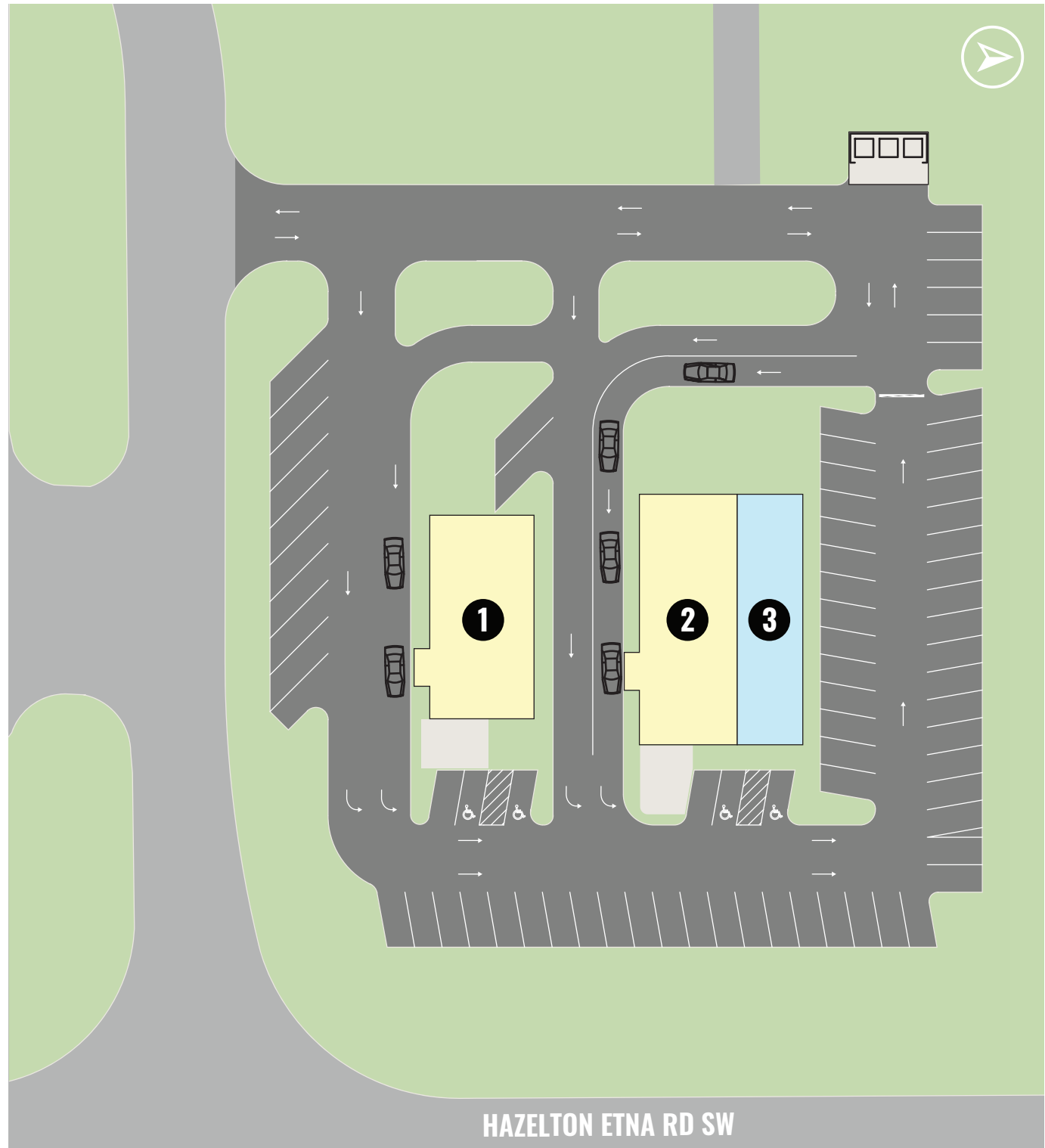
COLUMBUS

389 E. LIVINGSTON AVENUE
COLUMBUS, OHIO 43215

P 216.381.8200

F 216.381.8211

WWW.GOODMANREALESTATE.COM



HAZELTON ETNA RD SW

THE INFORMATION ABOVE HAS BEEN OBTAINED FROM SOURCES BELIEVED TO BE RELIABLE. GOODMAN REAL ESTATE SERVICES GROUP LLC AND ITS AGENTS, ASSOCIATES, AND EMPLOYEES MAKE NO GUARANTEE, WARRANTY OR REPRESENTATION ABOUT IT. ALL IMAGES CONTAINED HEREIN ARE THE PROPERTY OF GOODMAN REAL ESTATE SERVICES GROUP LLC AND SHALL NOT BE DUPLICATED OR REPRODUCED WITHOUT EXPRESS WRITTEN CONSENT OF GOODMAN REAL ESTATE SERVICES GROUP LLC. YOU ACKNOWLEDGE THAT, AS REQUIRED BY THE STATE OF OHIO, YOU HAVE RECEIVED THE CONSUMER GUIDE TO AGENCY RELATIONSHIPS.