



RURAL KING OUTLOT OPPORTUNITY

Owensboro, Kentucky



HIGHLIGHTS

- Join newly constructed Rural King store, adjacent to Kroger and T&T Vendors Mall
- Nearby Owensboro Health Regional Hospital is the city's largest employer with 4,200 employees and 477 beds
- Population of nearly 100,000 with average household incomes of \$64,000 within 10 miles
- Daytime population of over 45,000 within a 5-mile radius
- AVAILABLE: 1.5 AC outlot

DEMOGRAPHICS

POPULATION	5 MILE	10 MILE	15 MILE	20 MILE	30 MILE
2025 Projection	76,467	98,397	117,949	143,356	387,768
2020 Estimate	74,437	95,906	115,116	140,227	379,771
INCOME	5 MILE	10 MILE	15 MILE	20 MILE	30 MILE
2020 Average	\$62,592	\$64,977	\$65,465	\$65,988	\$64,585
2020 Median	\$45,114	\$48,067	\$49,544	\$50,622	\$48,289
DAYTIME POPULATION	5 MILE	10 MILE	15 MILE	20 MILE	30 MILE
2020 Employees	45,536	51,044	54,087	60,740	183,375

LEASING INFORMATION

www.goodmanrealestate.com
216.381.8200

CLEVELAND

THE OFFICES OF LEGACY VILLAGE
25333 CEDAR ROAD, SUITE 305
CLEVELAND, OH 44124

COLUMBUS

389 E. LIVINGSTON AVENUE
COLUMBUS, OHIO 43215

ALEX JUSTICE

Sales & Leasing Associate

alexandria@goodmanrealestate.com



LEASING INFORMATION

www.goodmanrealestate.com

216.381.8200

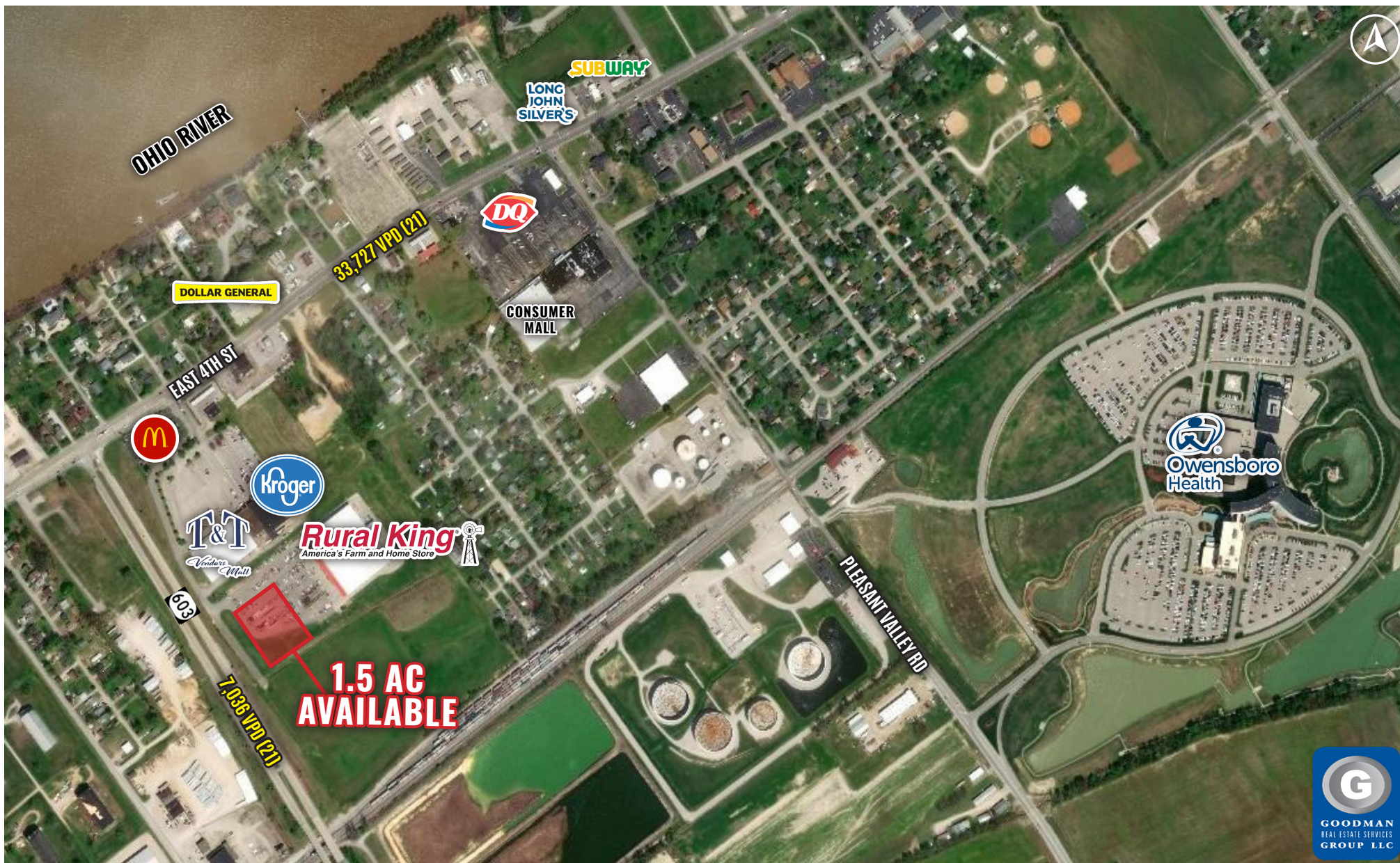
ALEX JUSTICE

Sales & Leasing Associate

alexandria@goodmanrealestate.com

RURAL KING OUTLOT OPPORTUNITY

Owensboro, Kentucky



THE INFORMATION ABOVE HAS BEEN OBTAINED FROM SOURCES BELIEVED TO BE RELIABLE. GOODMAN REAL ESTATE SERVICES GROUP LLC AND ITS AGENTS, ASSOCIATES, AND EMPLOYEES MAKE NO GUARANTEE, WARRANTY OR REPRESENTATION ABOUT IT. ALL IMAGES CONTAINED HEREIN ARE THE PROPERTY OF GOODMAN REAL ESTATE SERVICES GROUP LLC AND SHALL NOT BE DUPLICATED OR REPRODUCED WITHOUT EXPRESS WRITTEN CONSENT OF GOODMAN REAL ESTATE SERVICES GROUP LLC. YOU ACKNOWLEDGE THAT, AS REQUIRED BY THE STATE OF OHIO, YOU HAVE RECEIVED THE CONSUMER GUIDE TO AGENCY RELATIONSHIPS.