



For Sale

Etcheverry Ranch

Little Panoche Road | Firebaugh, CA



Investment Sales | Leasing | Asset Management



Contents

3 Property Information

4 Parcel Map

5 Photo Collage

Quinn Mulrooney

Director | Ag Services

209 733 9415

quinn.mulrooney@ngcip.com

Lic. # 02097075

Jon Kendall

Investments | Agriculture

209 485 9989

jon.kendall@ngcip.com

Lic. # 02023907

© 2020 Northgate Commercial Real Estate. We obtained the information above from sources we believe to be reliable. However, we have not verified its accuracy and make guarantee, warranty or representation about it. It is submitted subject to the possibility of errors, omissions, change of price, rental or other conditions, prior sale, lease or financing, or withdrawal without notice. We include projections, opinions, assumptions or estimates for example only, and they may not represent current or future performance of the property. You and your tax and legal advisors should conduct your own investigation of the property and transaction.

Property Information

Sales Price: **\$1,022,000**

Price/Acre:	\$700	APN's	
Parcel Size:	±1,460.33 Acres	Grazing Land:	009-041-25S, 009-041-20S 009-041-18S, 009-060-80S 009-041-31S, 009-060-20S 009-060-19S, 009-060-84S 009-060-71S, 017-010-03S 009-070-51S
Zoning:	A1		
Williamson Act:	No		

- 1,460 acres of grazing land near Interstate 5 and Little Panoche Road
- Additional adjacent acreage may be available
- One parcel is available to receive 53-acre feet of water from San Luis Water District

Parcel Map

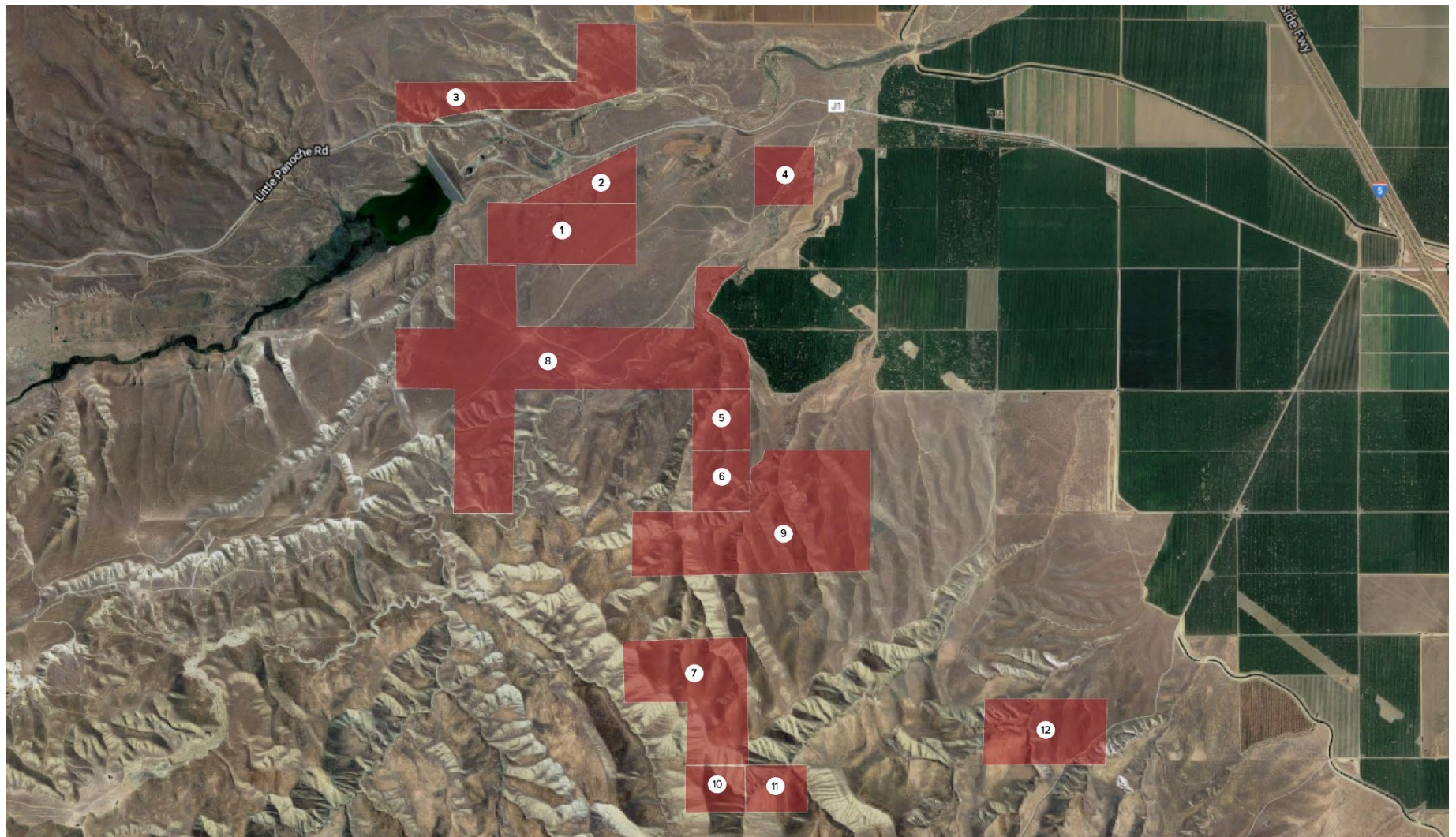
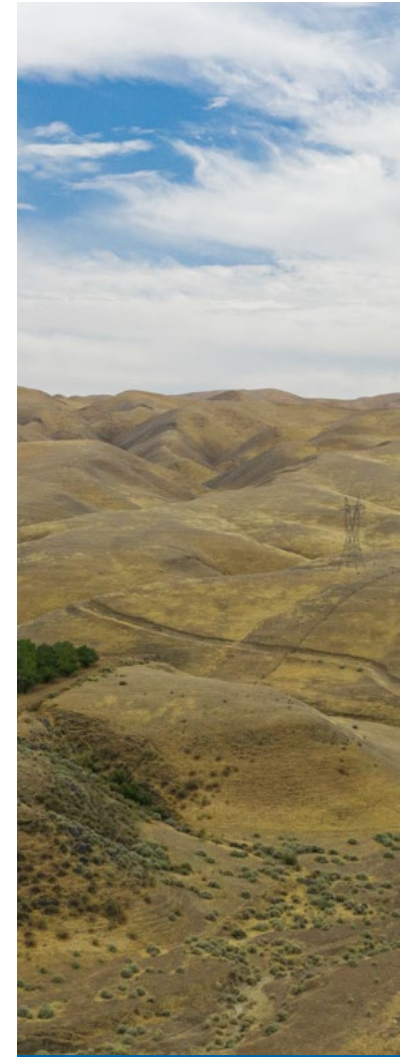


Photo Collage



© 2020 Northgate Commercial Real Estate. We obtained the information above from sources we believe to be reliable. However, we have not verified its accuracy and make guarantee, warranty or representation about it. It is submitted subject to the possibility of errors, omissions, change of price, rental or other conditions, prior sale, lease or financing, or withdrawal without notice. We include projections, opinions, assumptions or estimates for example only, and they may not represent current or future performance of the property. You and your tax and legal advisors should conduct your own investigation of the property and transaction.



Quinn Mulrooney

Director | Ag Services

209 733 9415

quinn.mulrooney@ngcip.com

Lic. # 02097075

Jon Kendall

Investments | Agriculture

209 485 9989

jon.kendall@ngcip.com

Lic. # 02023907



Investment Sales | Leasing | Asset Management