

2,080 SF RETAIL ON AMBASSADOR CAFFERY **NAI**Latter & Blum

3810 Ambassador Caffery Pkwy, Lafayette, LA 70503

Listing ID: 30630257
Status: Active
Property Type: Retail-Commercial For Lease
Retail-Commercial Type: Restaurant, Street Retail
Contiguous Space: 2,080 SF
Total Available: 2,080 SF
Lease Rate: \$18 PSF (Annual)
Base Monthly Rent: \$3,120
Lease Type: NNN



Overview/Comments

2,080 sf retail suite near Skyzone and behind Jimmy John's. Lobby, service area with counter, work area, large front storeroom, smaller rear storeroom. Two handicap restrooms. 12' suspended ceiling. Former phone repairs.

More Information Online

<https://latterblum.catylist.com//listing/30630257>

QR Code

Scan this image with your mobile device:



General Information

Tax ID/APN: 6099888
Retail-Commercial Type: Restaurant, Street Retail
Building/Unit Size (RSF): 2,080 SF

Available Space

Suite/Unit Number:	600	Date Available:	07/10/2020
Space Available:	2,080 SF	Lease Rate:	\$18 PSF (Annual)
Minimum Divisible:	2,080 SF	Lease Type:	NNN
Maximum Contiguous:	2,080 SF	Parking Spaces:	0
Space Type:	Relet	CAM Expenses:	\$4.50 PSF (Annual)

Area & Location

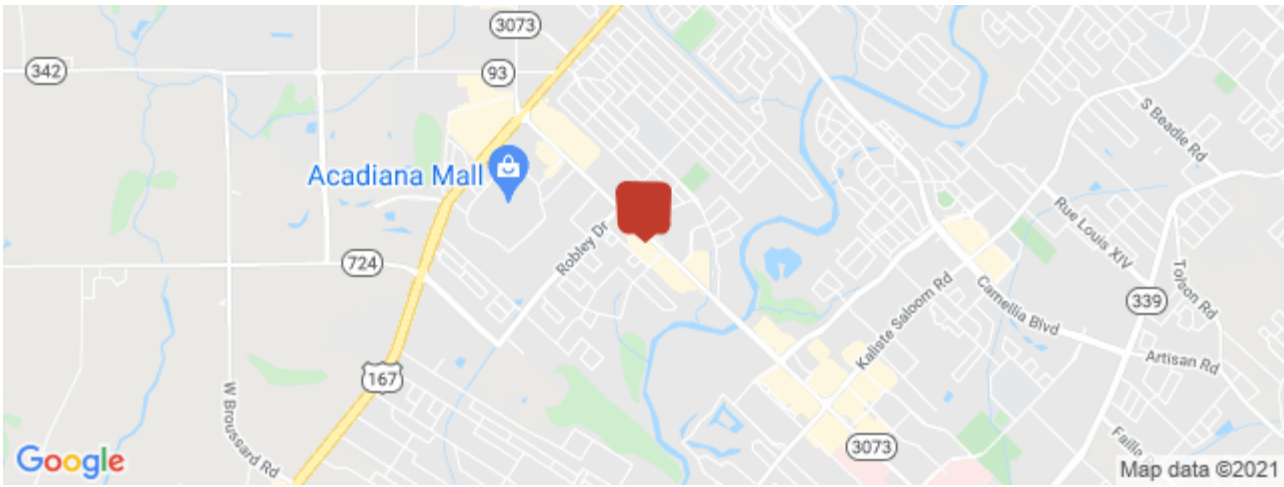
Retail Clientele: General
Property Visibility: Good

Building Related

Property Condition: Good
Passenger Elevators: 0
Freight Elevators: 0

Location

Address:	3810 Ambassador Caffery Pkwy, Lafayette, LA 70503	MSA:	Lafayette
County:	Lafayette	Submarket:	N



Property Images



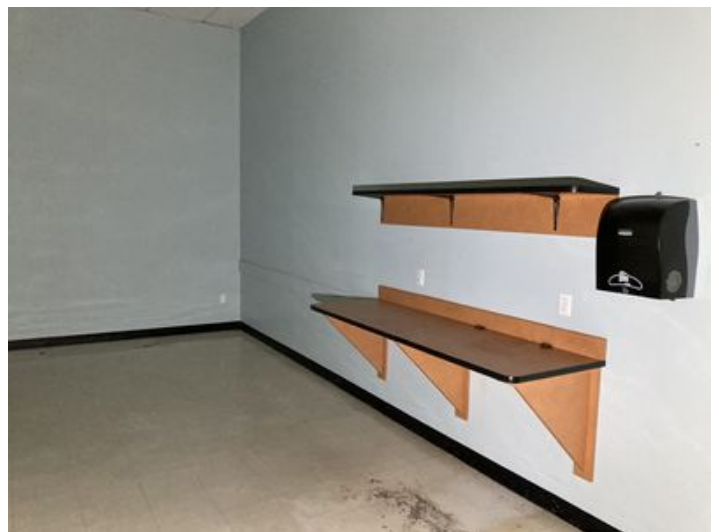
Service Counter



Front Storeroom



Work Area & Supplies



Rear Area



Rear Storeroom



Hndcp Restroom

Property Contacts



Dewitt C David, Jr

NAI/Latter & Blum Commercial Lafayette

337-298-6169 [M]

DewittDavid@LatterBlum.com