

# SCHAEFER INDUSTRIAL PARK LOT #6

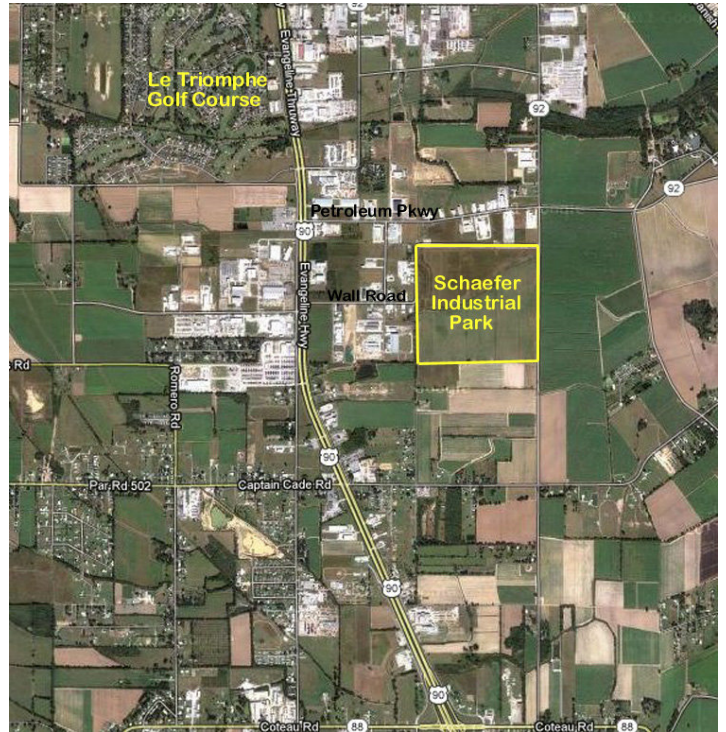


## Wall Road Lot #6, Broussard, LA 70518

Listing ID: 30586241  
 Status: Active  
 Property Type: Vacant Land For Sale  
 Possible Uses: Industrial, Office  
 Gross Land Area: 3.16 Acres  
 Sale Price: \$275,212  
 Unit Price: \$87,092 Per Acre  
 Sale Terms: Cash to Seller

### Overview/Comments

260' frontage on Wall Road.



### More Information Online

<https://latterblum.catylist.com//listing/30586241>

### QR Code

Scan this image with your mobile device:

### General Information

Tax ID/APN:	382241	Zoning:	INDUSTRIAL
Possible Uses:	Industrial, Office	Sale Terms:	Cash to Seller

### Location

Address:	Wall Road Lot #6, Broussard, LA 70518
County:	Lafayette
MSA:	Lafayette



## Property Contacts

---



**Dewitt C David, Jr**

NAI/Latter & Blum Commercial Lafayette

337-298-6169 [M]

DewittDavid@LatterBlum.com