

Bartley Tract #2

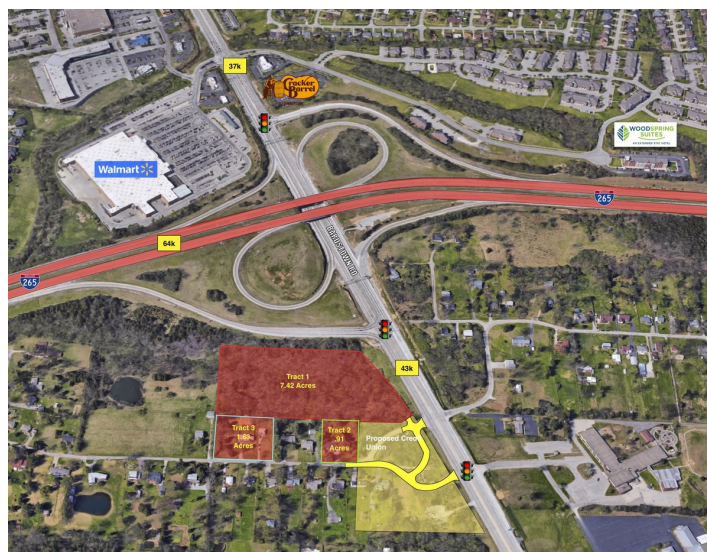
9601 Bartley Dr, Louisville, KY 40291



Listing ID: 30628845
 Status: Active
 Property Type: Vacant Land For Sale
 Possible Uses: Hospitality, Multi-Family
 Gross Land Area: 0.91 Acres
 Sale Price: \$400,000
 Unit Price: \$439,560 Per Acre
 Sale Terms: Cash to Seller

Overview/Comments

These Available Parcels includes two critical lots with direct access to a newly planned Credit Union development on Bardstown Rd. The Credit Union is currently under zoning review and approval. The available lots are contiguous to a 7+ acre parcel with Bardstown Rd and I-265 visibility.



More Information Online

<https://www.kcrea.com//listing/30628845>

QR Code

Scan this image with your mobile device:



General Information

Tax ID/APN:	064702020000	Zoning:	R-4 - Residential Single Family District
Possible Uses:	Hospitality, Multi-Family, Office, Retail, Retail-Pad, Self Storage	Adjacent Parcels Available:	Yes
		Sale Terms:	Cash to Seller

Area & Location

Largest Nearby Street: Bardstown Rd & I-265

Land Related

Lot Frontage: 200
 Lot Depth: 220
 Topography: Level

Location

Address: 9601 Bartley Dr, Louisville, KY 40291
 County: Jefferson
 MSA: Louisville/Jefferson County



Property Contacts



Wallace R Fluhr
FLUHR
502-777-6006 [0]
wfluhr@ccim.net