

# 6.96 ACRES. CORNER.

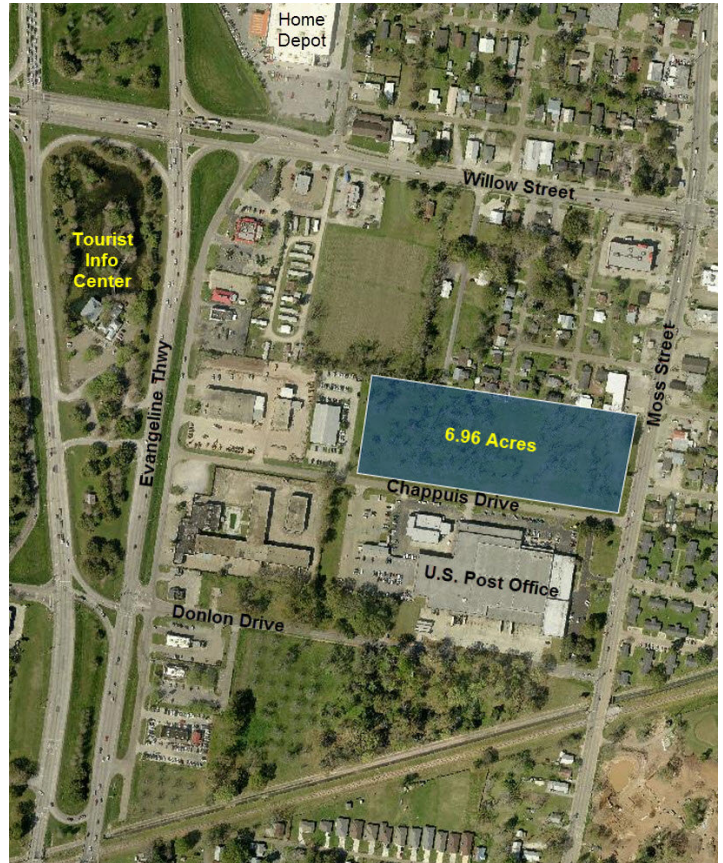
## 1201 Moss Street, Lafayette, LA 70501



Listing ID: 29978759  
 Status: Active  
 Property Type: Vacant Land For Sale  
 Possible Uses: Hospitality, Office  
 Gross Land Area: 6.96 Acres  
 Sale Price: \$1,212,710  
 Unit Price: \$174,239 Per Acre  
 Sale Terms: Cash to Seller

### Overview/Comments

Good corner location. Moss Street & Chappuis Drive. Across from U.S. Postal Service processing center. 332' on Moss Street x 907' on Chappuis Drive. Commercial Heavy zoning allows most commercial uses. Public water, sewer, electricity. OPPORTUNITY ZONE.



### More Information Online

<https://latterblum.catylist.com//listing/29978759>

### QR Code

Scan this image with your mobile device:



### General Information

Tax ID/APN:	6149508	Zoning:	CH. COMMERCIAL HEAVY.
Possible Uses:	Hospitality, Office, Retail, Retail-Pad, Self Storage	Sale Terms:	Cash to Seller

### Area & Location

Property Visibility: Excellent  
 Site Description: NW corner of Moss St & Chappuis Drive. Both streets curb & gutter. Across from US Post Office.

### Land Related

Zoning Description:	CH. Commercial Heavy.	Water Service:	Municipal
Available Utilities:	Electric, Water, Sewer	Sewer Type:	Municipal

### Location

Address:	1201 Moss Street, Lafayette, LA 70501	MSA:	Lafayette
County:	Lafayette	Submarket:	D



## Property Contacts

---



**Dewitt C David, Jr**

NAI/Latter & Blum Commercial Lafayette

337-298-6169 [M]

DewittDavid@LatterBlum.com