

16.3 ACRES. HIGHLY-TRAVELED CORNER.

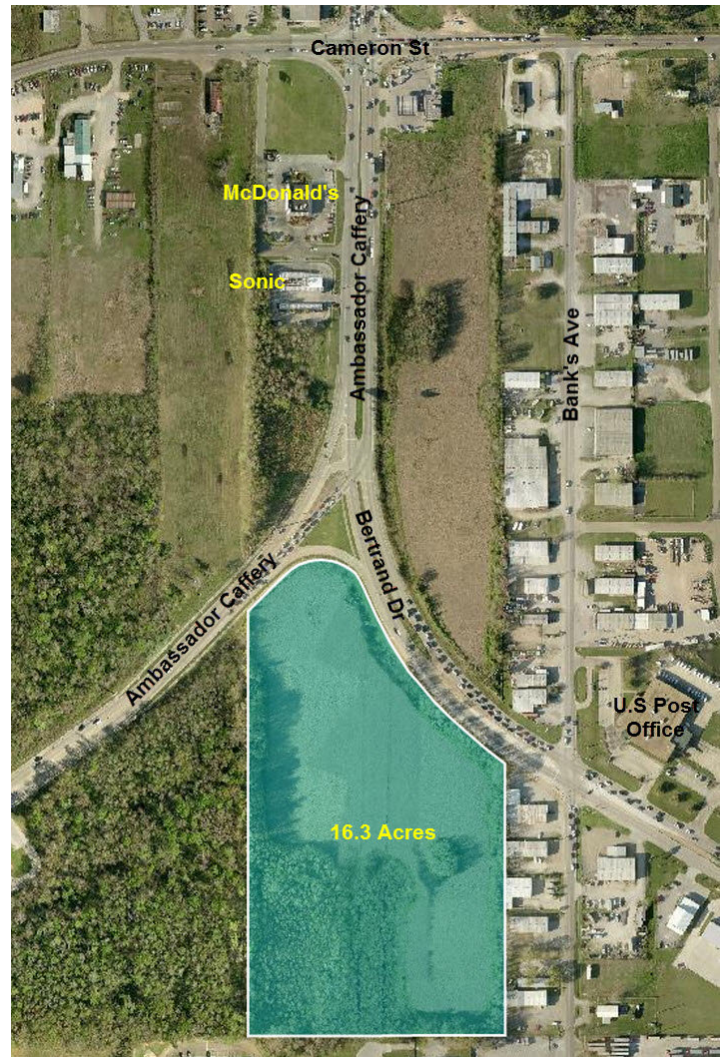
1001 Ambassador Caffery , Lafayette, LA 70506



Listing ID: 29978750
Status: Active
Property Type: Vacant Land For Sale
Possible Uses: Hospitality, Multi-Family
Gross Land Area: 16.30 Acres
Sale Price: \$7,100,280
Unit Price: \$435,600 Per Acre
Sale Terms: Cash to Seller

Overview/Comments

16.3 acres at intersection of Ambassador Caffery Pkwy and Bertrand Drive with traffic signal. Extremely high traffic count. Access from rear via Luke Drive.



More Information Online

<https://latterblum.catylist.com//listing/29978750>

QR Code

Scan this image with your mobile device:



General Information

Tax ID/APN:	6022574	Zoning:	CH COMMERCIAL HEAVY
Possible Uses:	Hospitality, Multi-Family, Retail	Sale Terms:	Cash to Seller

Area & Location

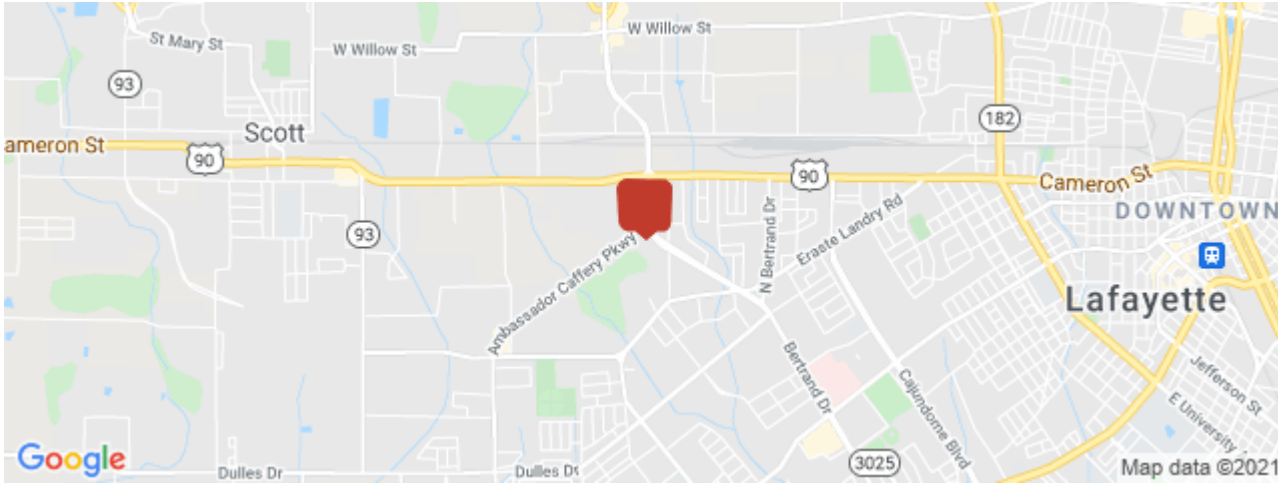
Property Visibility: Excellent
Site Description: Frontage on Ambassador Caffery Pkwy, Bertrand Drive & Luke St.

Land Related

Zoning Description:	CH. Commercial Heavy.	Water Service:	Municipal
Available Utilities:	Electric, Water, Sewer	Sewer Type:	Municipal

Location

Address:	1001 Ambassador Caffery , Lafayette, LA 70506	MSA:	Lafayette
County:	Lafayette	Submarket:	G3



Property Contacts



Dewitt C David, Jr

NAI/Latter & Blum Commercial Lafayette
337-298-6169 [M]
DewittDavid@LatterBlum.com