

9700 Park Plaza Ave. #201
Louisville, KY



Price: \$205,000

Size: ~ 1,200 sf 2nd Floor Corner Unit
Ample Office Sizes, Lobby, Conference Room and Break Room

Location: East Side of Louisville
Olympia Office Condominiums
Directly behind The Paddock SC
Brownsboro Rd & Springdale Rd

Availability: Immediate

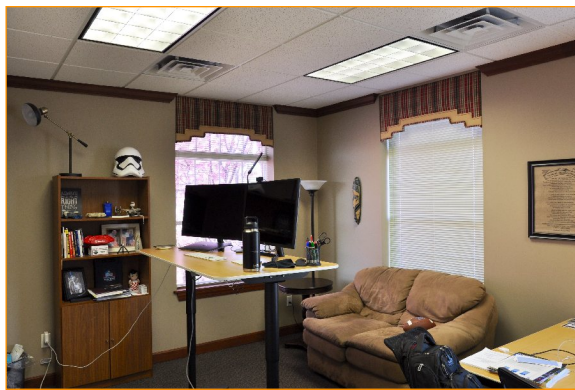
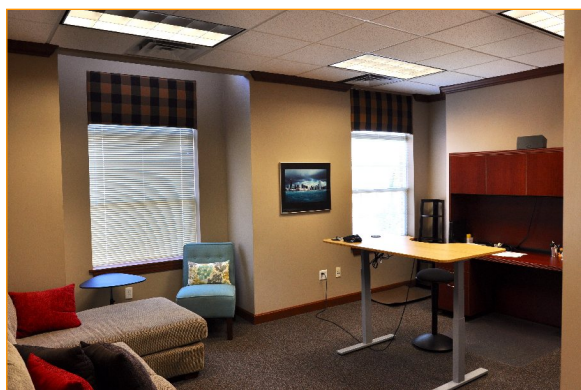
SITE DETAILS

- Class A Office Park
- Great blend of Owners
 - medical
 - legal
 - insurance
 - counseling
 - financial
- Outstanding Parking
- Professionally Managed Complex maintaining ample reserves but not sacrificing quality

Exclusively Marketed By:

Wallace R. Fluhr, CCIM Broker
fluhrcre.com
502-777-6006





To View Online

<https://www.kcrea.com/listing/30720018>

Louisville home to:

The Kentucky Derby
UPS World Headquarters
Ford Motor Company
GE Appliances
Humana Inc.
University of Louisville

Exclusively Marketed By:

Wallace R. Fluhr, CCIM Broker
fluhrcre.com
502-777-6006

