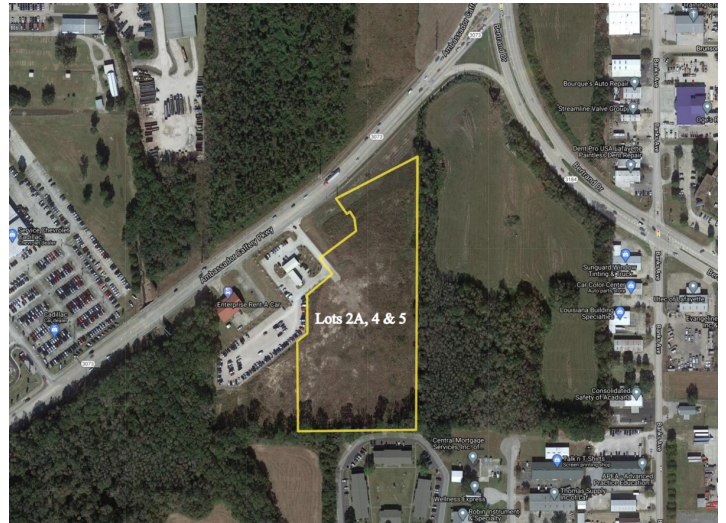


1107 Ambassador Caffery Parkway

1107 Ambassador Caffery Pkwy, Lafayette, LA 70506



Listing ID: 30669561
Status: Active
Property Type: Vacant Land For Sale
Possible Uses: Hospitality, Industrial
Gross Land Area: 6.03 Acres
Sale Price: \$788,000
Unit Price: \$130,679 Per Acre
Sale Terms: Cash to Seller



Overview/Comments

Largest lot remaining in this development fronting on Ambassador Caffery Parkway. Last portion of Ambassador Caffery includes new Service Chevrolet/Cadillac, Enterprise Rental, State Farm-Bradley Beck, Parlor Salon Studio, and future Sherwin Williams retail store nearby. Located just a few minutes from I-10. Excellent visibility with nearby traffic counts between 26,000 and 49,000 VPD. Sellers will work with buyers on preferred site sizes. Sellers will also entertain build to suit options.

More Information Online

<https://latterblum.catylist.com//listing/30669561>

QR Code

Scan this image with your mobile device:



General Information

Tax ID/APN:	6158913	Zoning:	CH
Possible Uses:	Hospitality, Industrial, Office, Retail, Retail-Pad, Other	Sale Terms:	Cash to Seller

Area & Location

Legal Description: Lot #2A, Section 28, T9S, R4E, Parish of Lafayette, Louisiana.

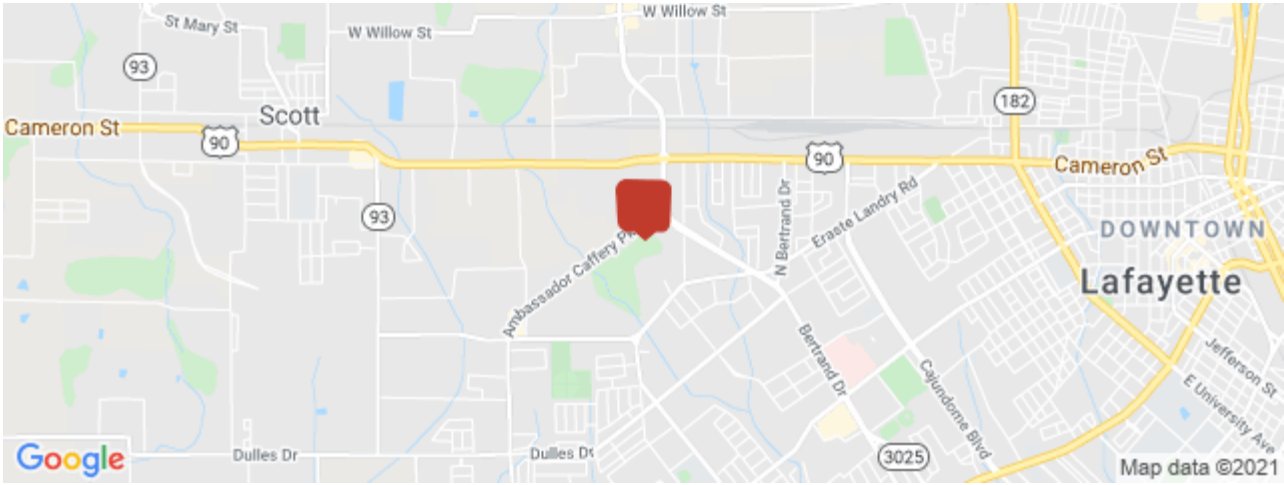
Area Description Ambassador Caffery, northbound towards Cameron Street. Property is on right just after Galbert Road, adjacent to Fire Station and is across from Service Chevrolet/Cadillac.

Land Related

Available Utilities: Electric, Gas
Water Service: Municipal
Sewer Type: Municipal

Location

Address:	1107 Ambassador Caffery Pkwy, Lafayette, LA 70506	MSA:	Lafayette
County:	Lafayette	Submarket:	G3



Property Images



20201130_093419



20201130_093316



20201130_093425



20201130_093328

Property Contacts



Robert Crouchet

NAI/Latter & Blum Commercial Lafayette
337-781-6614 [M]
337-233-9541 [O]
robert@crouchet.net