

HIGH END OFFICE SPACE FOR LEASE

FOOTHILLS CENTER

3930 E. RAY RD.

Phoenix, AZ 85044

PRESENTED BY:

JUSTIN HORWITZ

O: 480.425.5518

justin.horwitz@svn.com

AZ #SA562459000

JONATHAN LEVY

O: 480.425.5538

jonathan.levy@svn.com

AZ #SA648012000

PAUL BORGESEN III

O: 480.425.5516

paul.borgesen@svn.com

AZ #SA650078000





TABLE OF CONTENTS

3	PROPERTY INFORMATION	
	Property Summary	4
	Plans	5
	Suite 200 Floor Plan	7
	Additional Interior Photos	8
9	LOCATION INFORMATION	
	Ahwatukee Profile	10
	Location Maps	11
	Aerial Maps	12
	Area Amenities	13
	Demographics Map & Report	14

SECTION 1

PROPERTY INFORMATION





OFFERING SUMMARY

BUILDING SIZE:	41,084 SF
AVAILABLE SF:	2,600 - 11,930 SF
LEASE RATE:	\$19.00 PSF Full Service
LOT SIZE:	2.85 Acres
YEAR BUILT:	1998
ZONING:	C-2, Phoenix
MARKET:	Phoenix
SUBMARKET:	Ahwatukee
APN:	306-04-115

LOCATION OVERVIEW

Foothills Center is strategically located in the heart of Ahwatukee off of Ray Rd and the I-10 Fwy. Ahwatukee is a high end community abutted to South Mountain Park just west of the I-10 Freeway. The community is a highly attractive employment center that offers easy access to the urban freeway system including the I-10 and Loop 202 Freeways, Sky Harbor International Airport, and a large labor pool that is highly educated and skilled in a variety of occupations. The high end building is surrounded by an upscale residential neighborhood, convenient shopping centers, and an abundance of fabulous restaurants making it very appealing for local businesses to office out of.

PROPERTY HIGHLIGHTS

- Spec Suites Available for Lease
- Ready for Immediate Occupancy
- Asking Rate - \$19 PSF FS
- Located in the Heart of Ahwatukee

LEGEND

Available
Unavailable



2nd Floor Plan

AVAILABLE SPACES

SUITE	TENANT	SIZE	TYPE	RATE	DESCRIPTION
3930 E. Ray Road Suite 200	Available	2,600 - 11,930 SF	Full Service	\$19.00 SF/yr	-

LEGEND

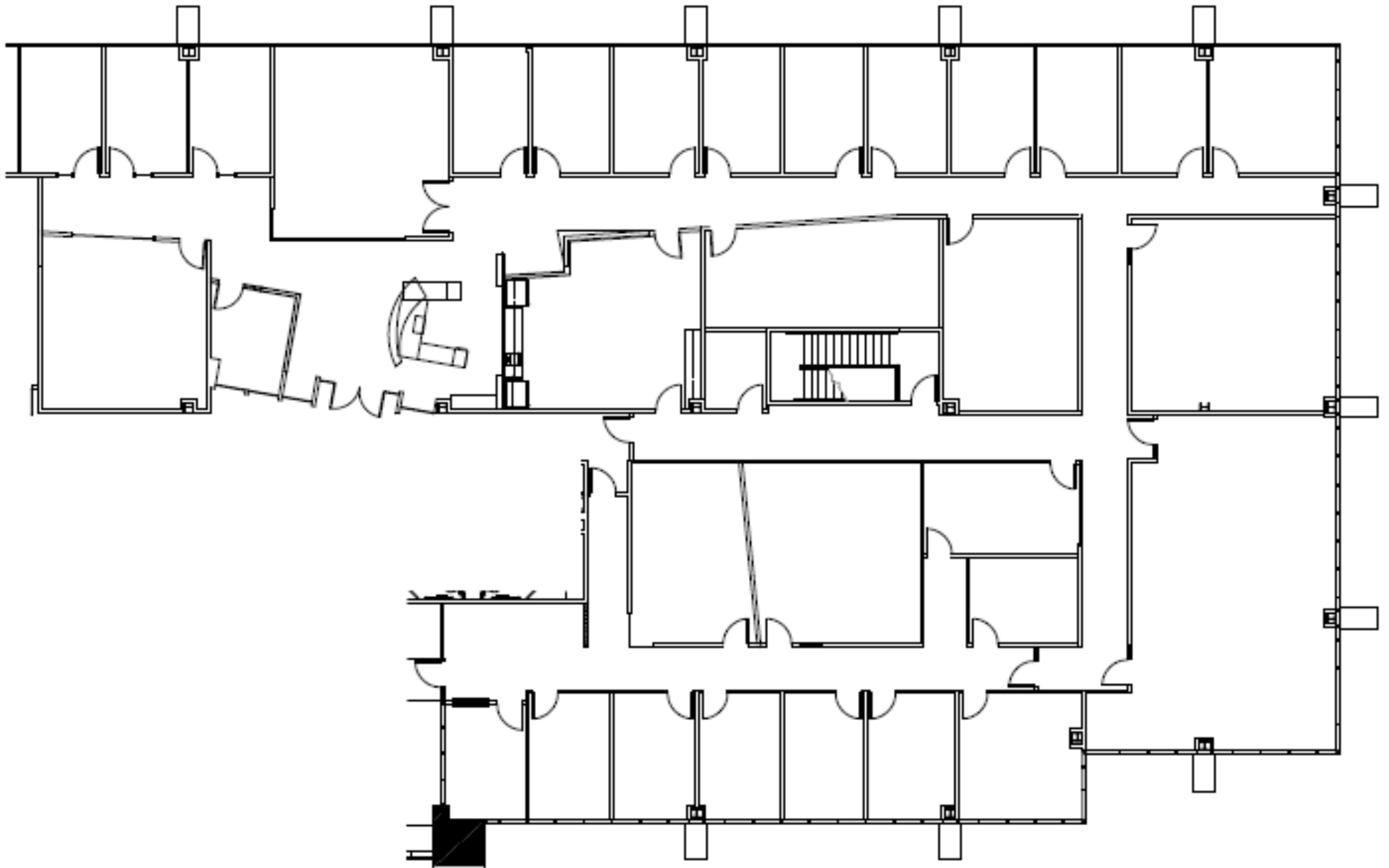
Unavailable



1st Floor Plan

AVAILABLE SPACES

SUITE	TENANT	SIZE	TYPE	RATE	DESCRIPTION
-------	--------	------	------	------	-------------



Suite 200: 11,930 RSF



SECTION 2

LOCATION INFORMATION





AHWATUKEE CITY PROFILE

Ahwatukee is one of the 15 villages designated by the City of Phoenix. The people who live, work and play in this thriving community share the intimacy of small-town living while enjoying the plentiful amenities of a bustling metropolis close at hand. Because Ahwatukee is nestled so closely to the surrounding mountains, it gives the feel of an independent city. The village is bound by I-10 to the east along with the cities of Chandler and Tempe, to the north is South Mountain and the Gila River Indian Reservation to the west and south.

Money Magazine recognized Ahwatukee as one of America's "Best Places to Live." Our 35.8 square-mile village currently has a population of approximately 88,500 residents. The average household income is \$96,700.

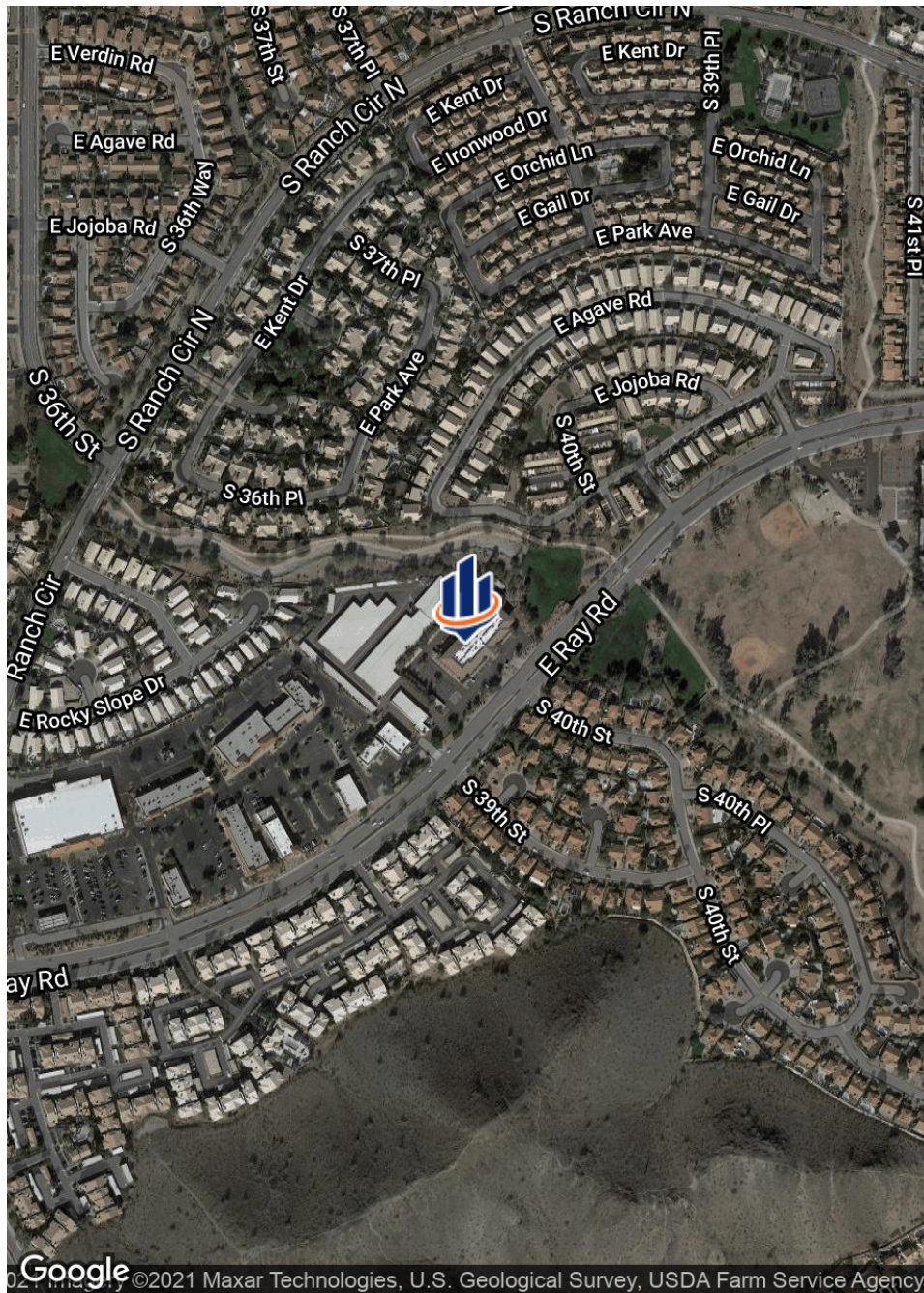
A portion of Ahwatukee's appeal is attributed to the strong educational system. The Kyrene School District serves the pre-k through 8th-grade sector. It is one of the top-performing districts in the state with all 25 schools receiving "excelling" or "highly performing" ratings. The two high schools are part of the Tempe Union High School district and both boast "excelling" ratings. In addition to the fine public schools are a variety of private and charter schools. Arizona State University is located in nearby Tempe. South Mountain College, the University of Phoenix and Ottawa University also have a campus presence in the area.

EMPLOYMENT CENTER PROFILE

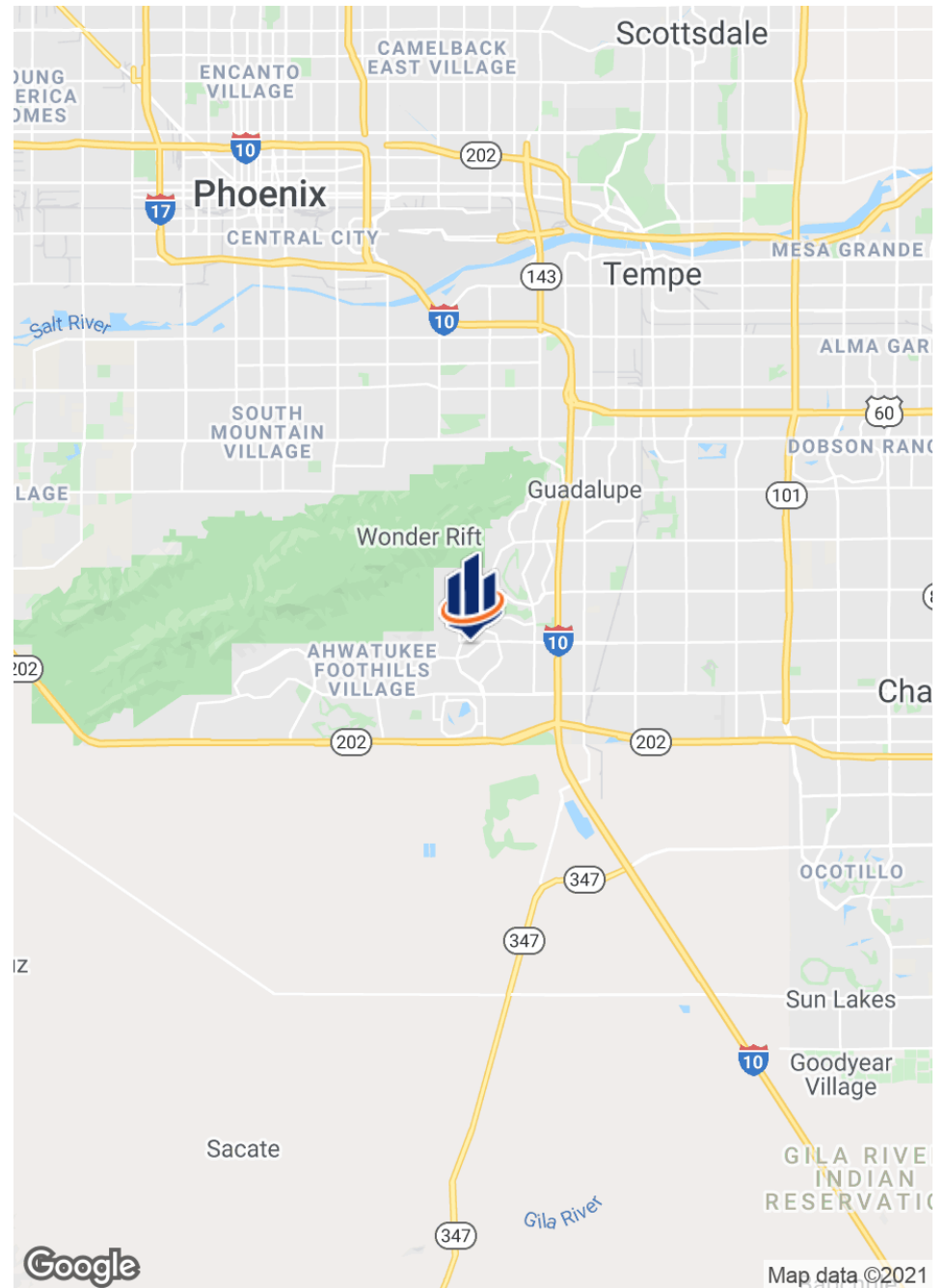
The Ahwatukee Foothills area is a highly attractive employment center that offers premium office locations with easy access to the urban freeway system, Sky Harbor International Airport, and a large labor pool.

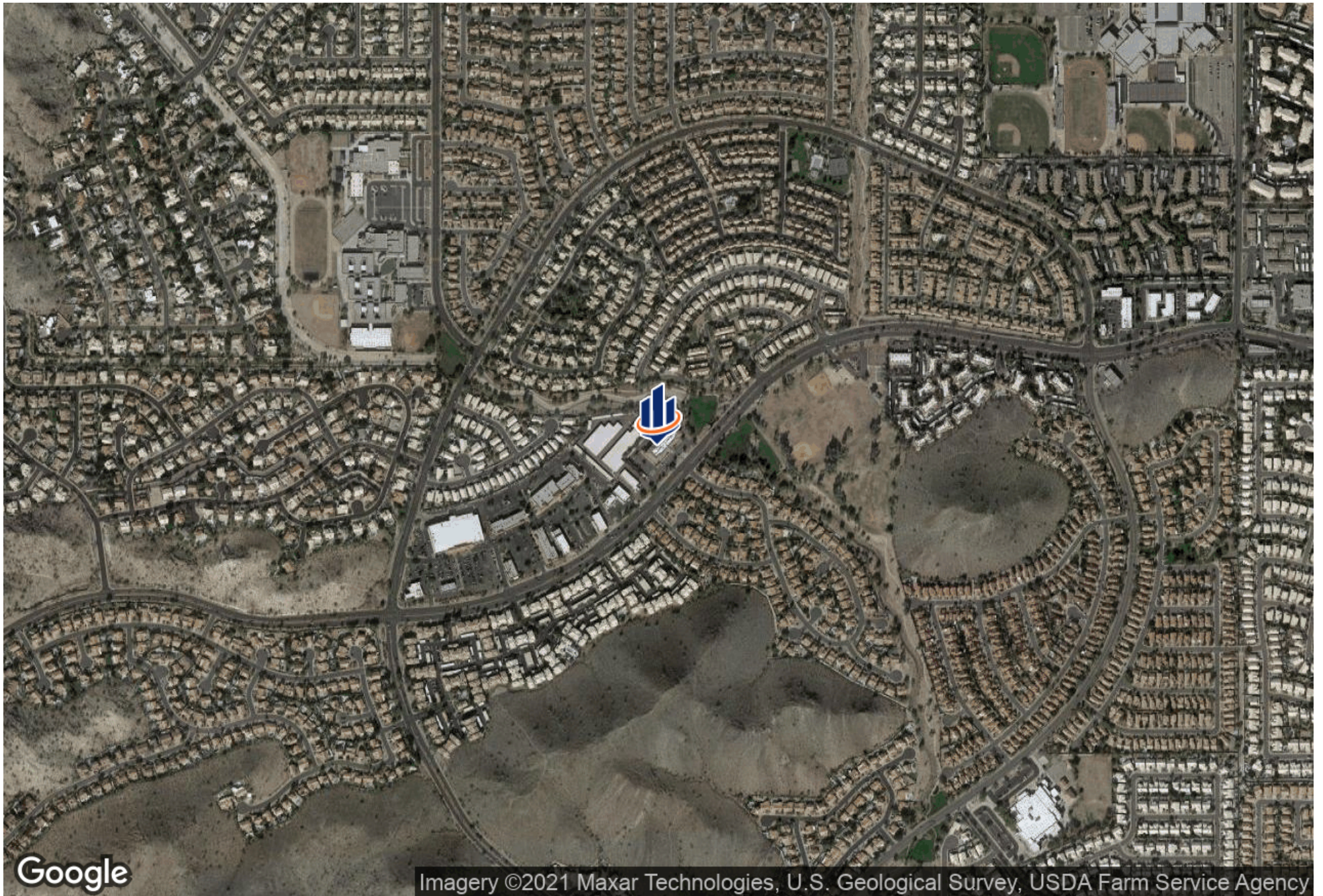
Employers in the Ahwatukee Foothills area enjoy an abundant labor pool that is both well educated and skilled in a variety of occupations. There are currently more than 418,000 workers within a 20 minute drive time and close to 980,000 within a 30 minute drive time. The population in the 30 minute drive time has grown by over 17 percent since 2000, and is expected to grow by an additional 6 percent by 2020, thereby ensuring continued labor pool growth.

Within a 10 minute commute shed there is a high concentration of clerical and administrative support workers, as well as managerial workers and healthcare & education workers. The occupational mix becomes more service focused within a 20 or 30 minute drive time and includes more service and production and transportation workers.² Within a 10 minute drive time, 29 percent of adults have completed some college and 24 percent have either a bachelors or graduate degree.



FOOTHILLS CENTER 3930 E. Ray Rd. Phoenix, AZ 85044







Google

Map data ©2021 Imagery ©2021 , CNES / Airbus, Landsat / Copernicus, Maxar Technologies, U.S. Geological Survey, USDA Farm Service Agency

POPULATION

	1 MILE	2 MILES	3 MILES
TOTAL POPULATION	14,958	52,840	77,208
AVERAGE AGE	35.7	36.0	37.0
AVERAGE AGE (MALE)	35.3	35.1	36.0
AVERAGE AGE (FEMALE)	35.9	37.0	37.9

HOUSEHOLDS & INCOME

	1 MILE	2 MILES	3 MILES
TOTAL HOUSEHOLDS	5,799	20,914	30,829
# OF PERSONS PER HH	2.6	2.5	2.5
AVERAGE HH INCOME	\$103,000	\$94,715	\$93,647
AVERAGE HOUSE VALUE	\$428,008	\$358,536	\$349,451

* Demographic data derived from 2010 US Census

