

Outlot for Build-to-Suit or Lease

1351 College Mall Road  
Bloomington, Indiana 47401

# NAI Cressy

COMMERCIAL REAL ESTATE SERVICES, WORLDWIDE

## Prime 1.25 Acre Outlot | College Mall Road Retail Corridor



### Snapshot

Land: 1.25 Acres  
Zoning: PUD

### Property Details

- Prime, 1.25 acre outlot
- College Mall Road retail corridor
- Build-to-suit or land lease
- Single-tenant retail user
- Sits in front of AMC Theatre Showplace 12



3502 Woodview Trace, Suite 250  
Indianapolis, Indiana 46268  
317.875.8888  
317.875.9999 Fax  
www.cressy.com

Global Brokerage Division of Cressy Commercial Real Estate

**ANDREW FOLLMAN, CCIM**  
Vice President, Business Manager  
317.566.5614  
afollman@cressy.com

Information furnished regarding property for sale, rental or financing is from sources deemed reliable. But no warranty or representation is made as to the accuracy thereof and same is submitted subject to errors, omissions, change of price, rental or other conditions, prior sale, leased, financing or withdrawal without notice. No liability of any kind is to be imposed on the broker herein.



Outlot for Build-to-Suit or Lease

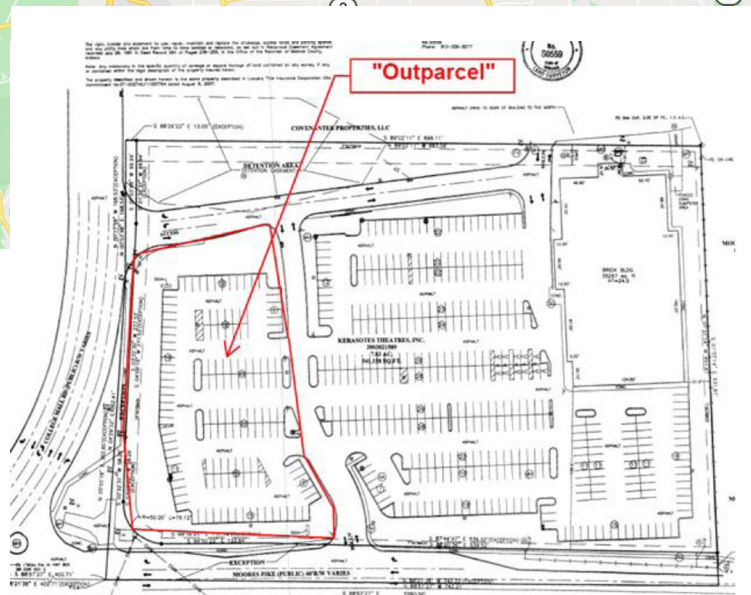
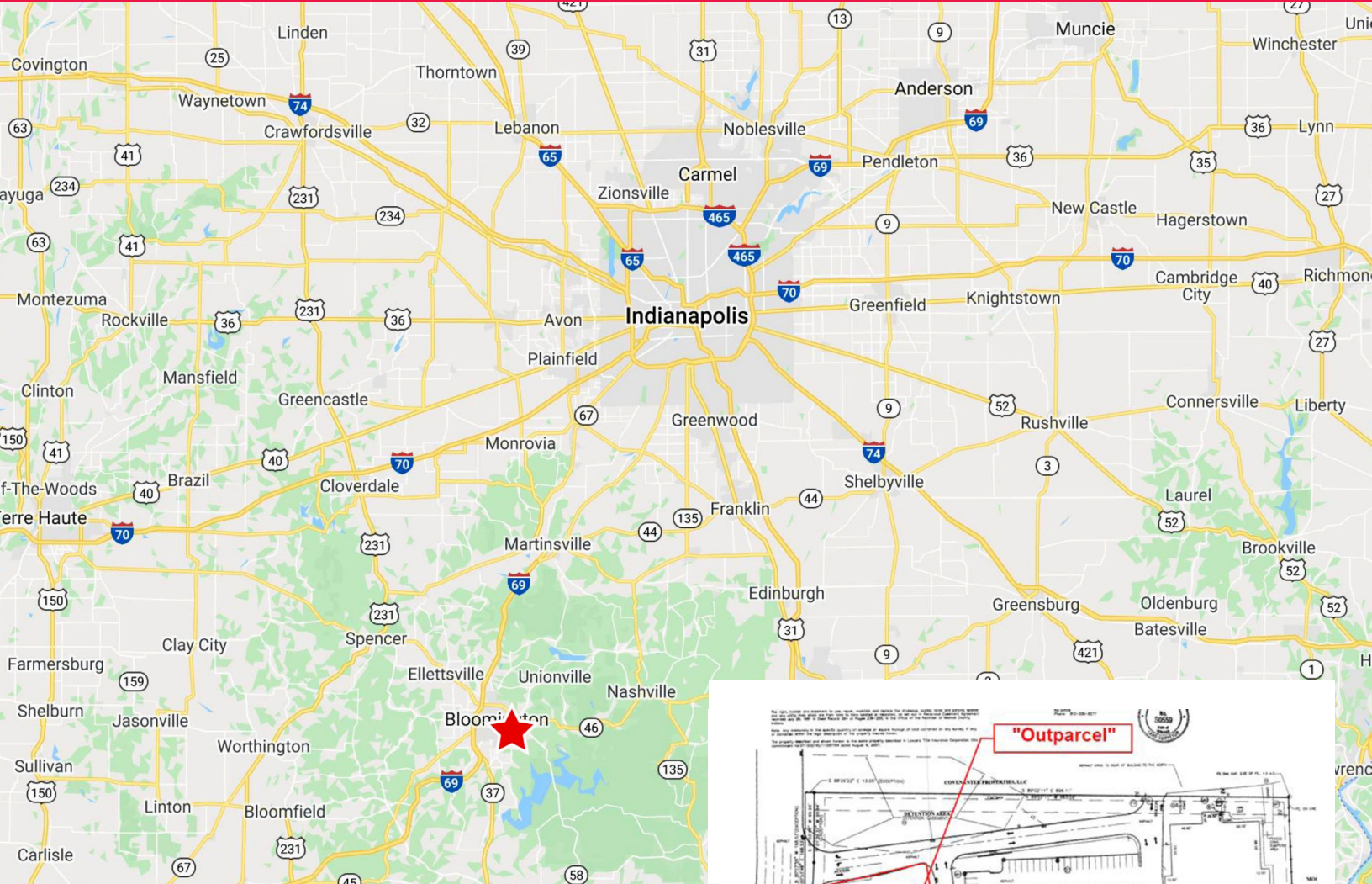


COMMERCIAL REAL ESTATE SERVICES, WORLDWIDE

1351 College Mall Road

Bloomington, Indiana 47401

Sits in Front of AMC Theater Showplace 12



2019 DEMOGRAPHICS	1 MILE	3 MILE	5 MILE
POPULATION	10,832	77,008	106,139
NUMBER OF HOUSEHOLDS	4,923	30,058	43,123
MEDIAN HOUSEHOLD INCOME	\$72,426	\$49,552	\$51,318

3502 Woodview Trace, Suite 250  
 Indianapolis, Indiana 46268  
 317.875.8888  
 317.875.9999 Fax  
 www.cressy.com

**ANDREW FOLLMAN, CCIM**  
 Vice President, Business Manager  
 317.566.5614  
 afolman@cressy.com

Information furnished regarding property for sale, rental or financing is from sources deemed reliable. But no warranty or representation is made as to the accuracy thereof and same is submitted subject to errors, omissions, change of price, rental or other conditions, prior sale, leased, financing or withdrawal without notice. No liability of any kind is to be imposed on the broker herein.

Global Brokerage Division of Cressy Commercial Real Estate