



## 11919 Sunray Avenue

Baton Rouge, Louisiana 70816

### Property Highlights

- Suite B – 1340 SF
- Office Condominium
- Waiting/Reception, Three Offices/Conference Room, Private Kitchen and Bathrooms
- Covered Parking
- Also for lease at \$1,100/month

### Sale Price

\$95,000



For more information

**Evan Scroggs, CCIM**

O: 225 297 7415 | C: 225 241 8616  
evanscrogs@latterblum.com

**Erin Caballero, CCIM**

O: 225 297 7868 | C: 225 297 7868  
erinc@latterblum.com

**Dex Shill**

O: 225 297 7874 | C: 225 284 9092  
dexshill@latterblum.com

**CALL OR EMAIL FOR MORE INFORMATION**

NO WARRANTY OR REPRESENTATION, EXPRESS OR IMPLIED, IS MADE AS TO THE ACCURACY OF THE INFORMATION CONTAINED HEREIN, AND THE SAME IS SUBMITTED SUBJECT TO ERRORS, OMISSIONS, CHANGE OF PRICE, RENTAL OR OTHER CONDITIONS, PRIOR SALE, LEASE OR FINANCING, OR WITHDRAWAL WITHOUT NOTICE, AND OF ANY SPECIAL LISTING CONDITIONS IMPOSED BY OUR PRINCIPALS NO WARRANTIES OR REPRESENTATIONS ARE MADE AS TO THE CONDITION OF THE PROPERTY OR ANY HAZARDS CONTAINED THEREIN ARE ANY TO BE IMPLIED. LICENSED IN LOUISIANA.

1700 City Farm Drive  
Baton Rouge, LA 70806  
225 295 0800 tel  
**latterblum.com**

March 02, 2020



SALE PRICE: \$95,000

PRICE PER SF: \$70.90/SF

ZONING: LC2

LOT SIZE: 0.27 Acres

BUILDING SIZE: 1,340 SF

BUILDING CLASS: B

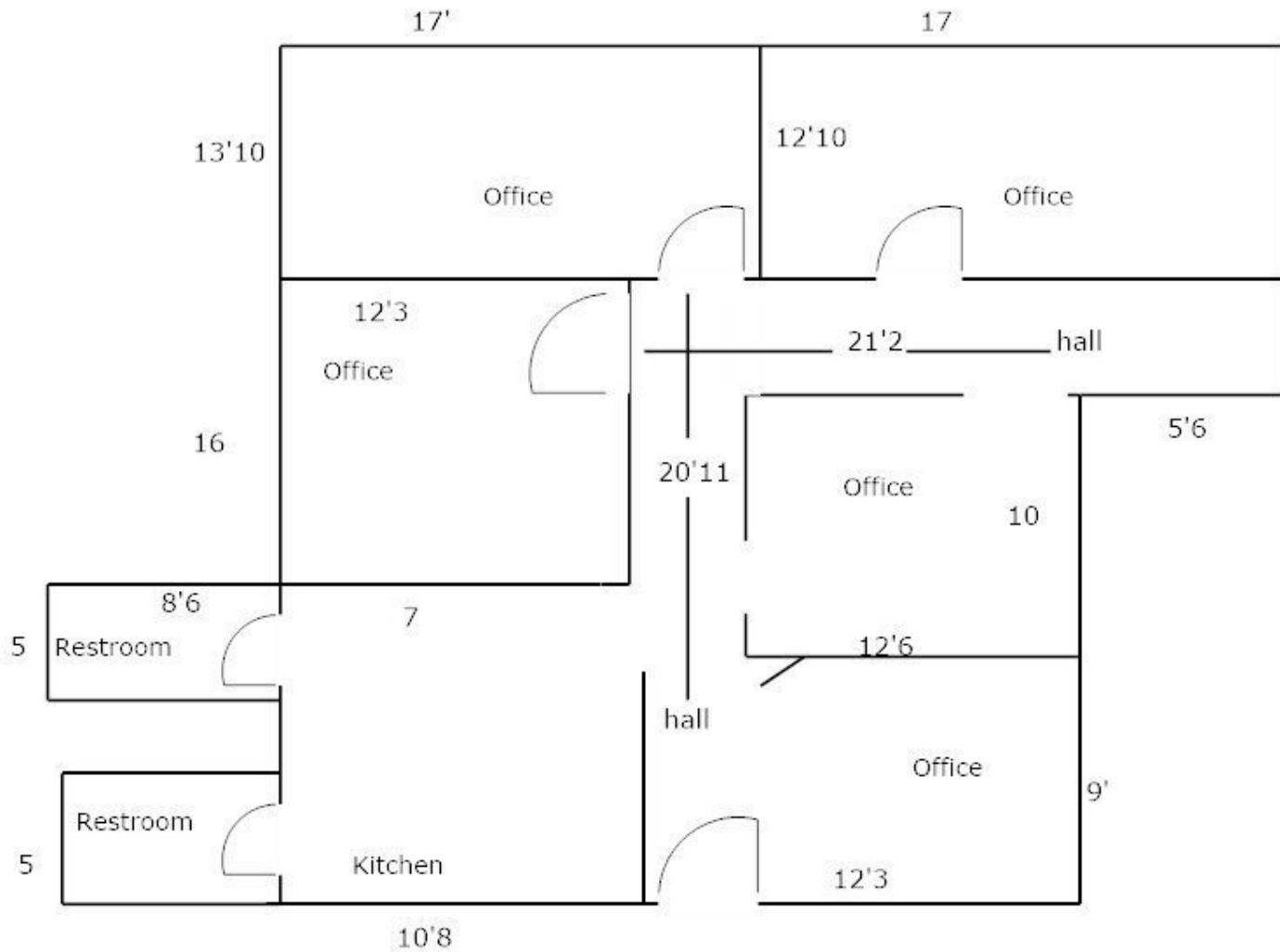


## DEMOGRAPHICS

STATS	POPULATION	AVG. HH INCOME
1 MILE	12,111	\$62,823
3 MILES	80,263	\$67,852
5 MILES	173,018	\$73,019

\* Figures shown represent estimates

## 11919 Sunray Blvd Ste. B





## Location Maps

