



12010 Lakeland Park Blvd

Baton Rouge, Louisiana 70809

Property Highlights

- Well Maintained Office Space
- Professionally Managed
- Efficient Floorplan
- Excellent Access to Airline Hwy & I-10

Lease Rate

\$10.00 SF/yr (MG)



For more information

Evan Scroggs, CCIM

O: 225 297 7415 | C: 225 241 8616
evanscrogs@latterblum.com

Dex Shill

O: 225 297 7874 | C: 225 284 9092
dexshill@latterblum.com

Erin Caballero, CCIM

O: 225 297 7868 | C: 225 297 7868
erinc@latterblum.com

CALL OR EMAIL FOR MORE INFORMATION

NO WARRANTY OR REPRESENTATION, EXPRESS OR IMPLIED, IS MADE AS TO THE ACCURACY OF THE INFORMATION CONTAINED HEREIN, AND THE SAME IS SUBMITTED SUBJECT TO ERRORS, OMISSIONS, CHANGE OF PRICE, RENTAL OR OTHER CONDITIONS, PRIOR SALE, LEASE OR FINANCING, OR WITHDRAWAL WITHOUT NOTICE, AND OF ANY SPECIAL LISTING CONDITIONS IMPOSED BY OUR PRINCIPALS NO WARRANTIES OR REPRESENTATIONS ARE MADE AS TO THE CONDITION OF THE PROPERTY OR ANY HAZARDS CONTAINED THEREIN ARE ANY TO BE IMPLIED. LICENSED IN LOUISIANA.

1700 City Farm Drive
Baton Rouge, LA 70806
225 295 0800 tel
latterblum.com



AVAILABLE SF: 2,800 SF

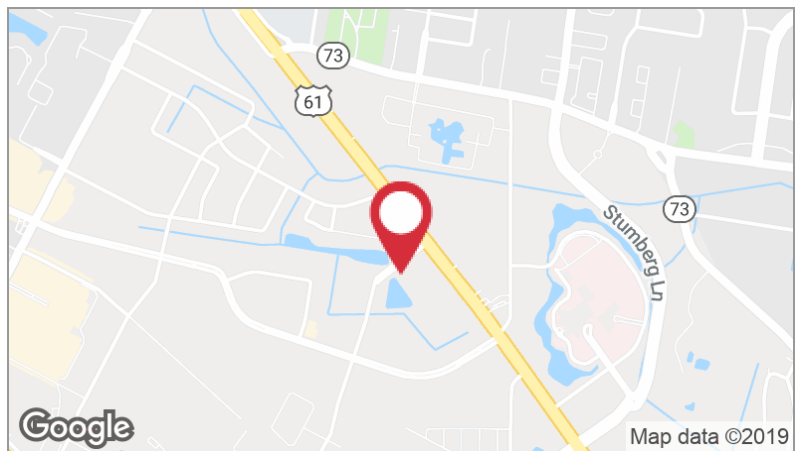
LEASE RATE: \$10.00 SF/yr (MG)

LOT SIZE: 3.88 Acres

BUILDING SIZE: 2,800 SF

BUILDING CLASS: B

ZONING: M1



DEMOGRAPHICS		
STATS	POPULATION	AVG. HH INCOME
1 MILE	4,657	\$87,236
5 MILES	144,304	\$83,922
10 MILES	416,497	\$72,416

* Figures shown represent estimates

Available Spaces



LEASE RATE: \$10.00 SF/YR **TOTAL SPACE:** 2,800 SF
LEASE TYPE: MG **LEASE TERM:** Negotiable

SPACE	SPACE USE	LEASE RATE	LEASE TYPE	SIZE (SF)	TERM
12010 Lakeland Park Blvd, Suite 129	Office Building	\$10.00 SF/yr	Modified Gross	2,800 SF	Negotiable

Additional Photos



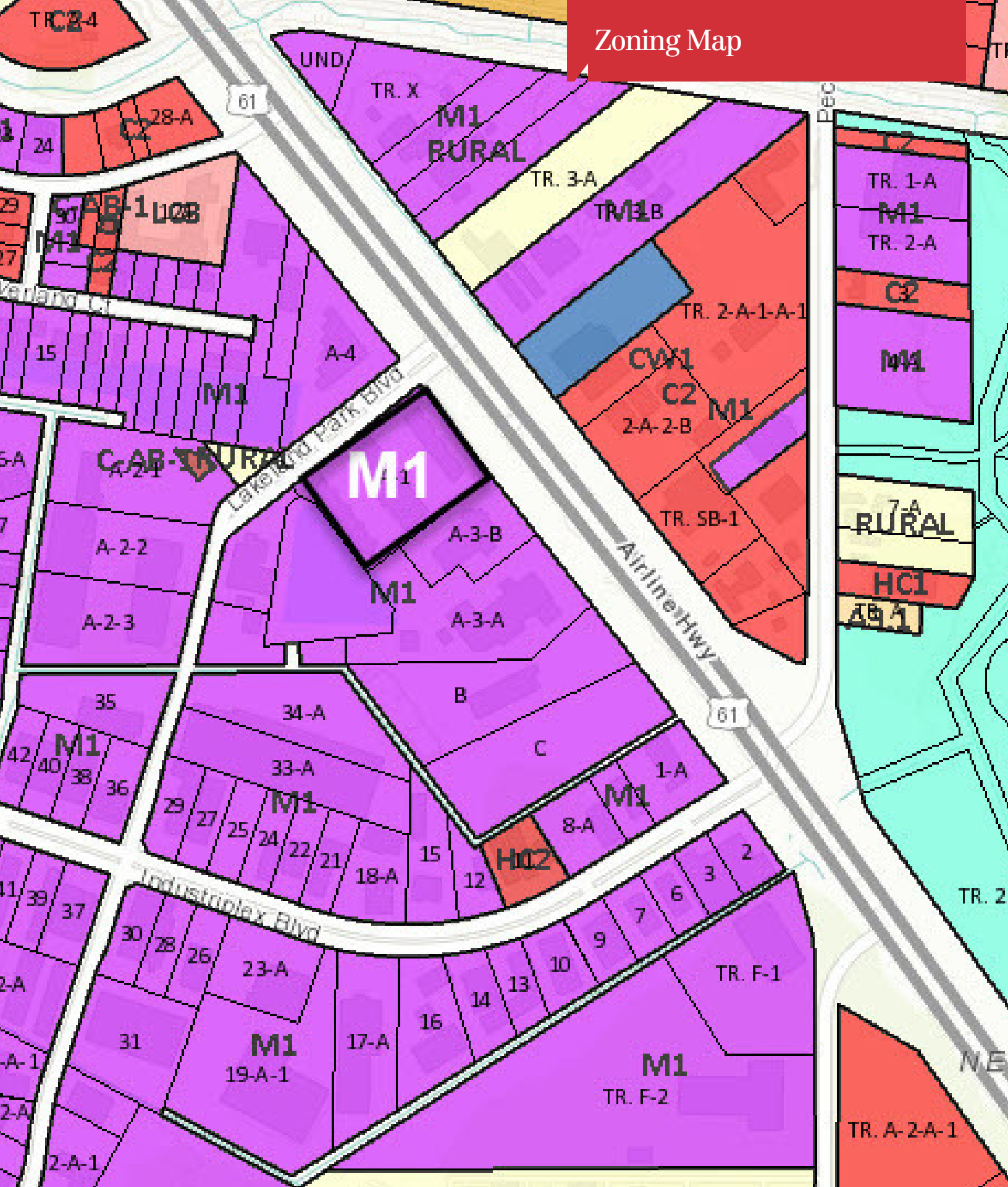
Additional Photos



Assessor Map

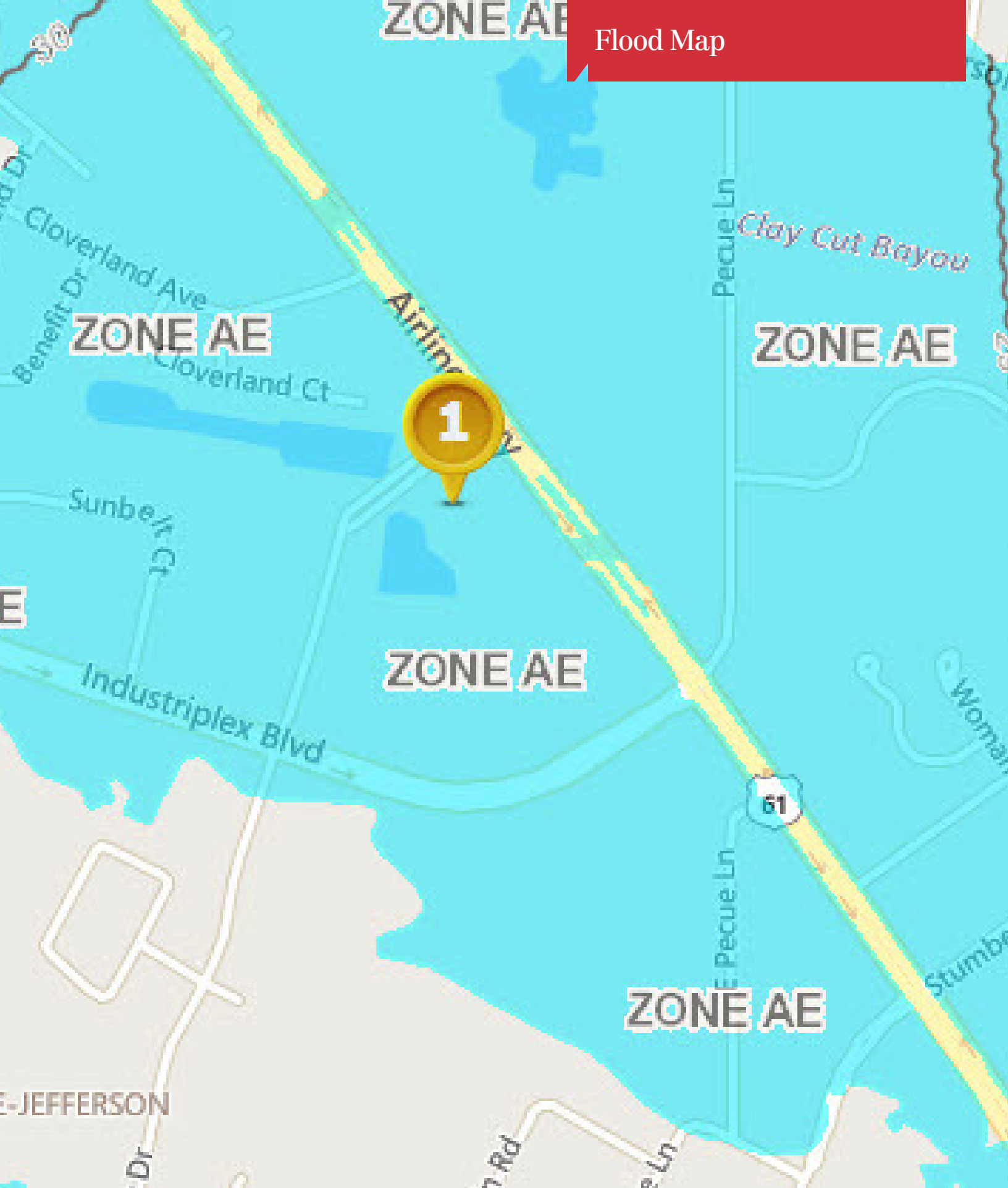


Zoning Map



1700 City Farm Drive
Baton Rouge, LA 70806
225 295 0800 tel
latterblum.com

Flood Map



Regional Map

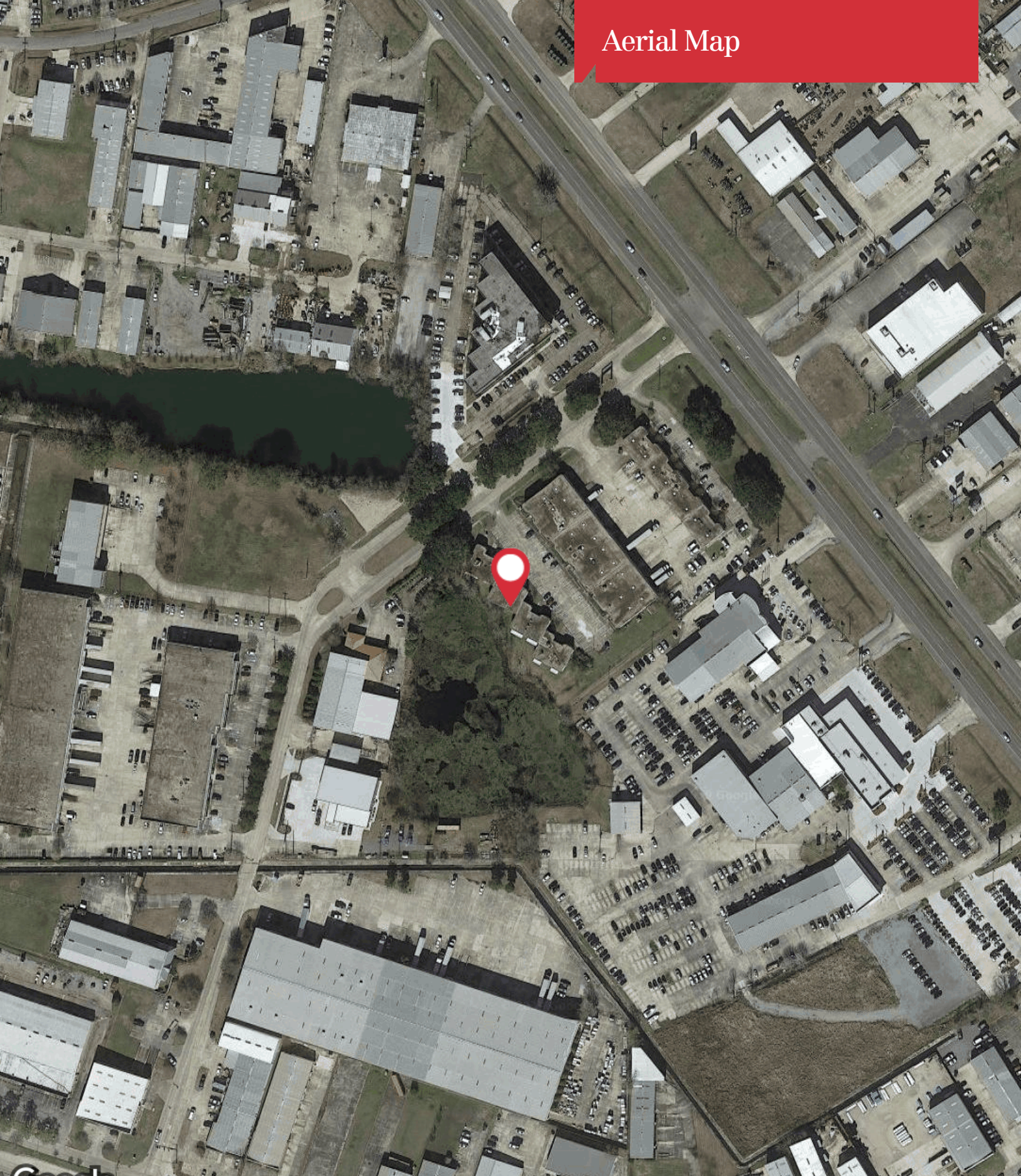


1700 City Farm Drive
Baton Rouge, LA 70806
225 295 0800 tel
latterblum.com

Location Maps



Aerial Map



Google

Imagery ©2019 , Maxar Technologies, U.S. Geological Survey, USDA Farm Service Agency

NAILatter&Blum

1700 City Farm Drive
Baton Rouge, LA 70806
225 295 0800 tel
latterblum.com

