



## 5525 W 119th Street

Overland Park, Kansas

### Property Features

- 8,384 RSF (divisible) and 3,080 RSF vacancies — 2nd floor
- Medical space located on Menorah Medical Center (HCA) campus
- 40,000 SF medical building with ample parking
- Situated in affluent Johnson County, KS
- Prime hard-corner location at 119th and Nall

NO WARRANTY OR REPRESENTATION, EXPRESS OR IMPLIED, IS MADE AS TO THE ACCURACY OF THE INFORMATION CONTAINED HEREIN, AND THE SAME IS SUBMITTED SUBJECT TO ERRORS, OMISSIONS, CHANGE OF PRICE, RENTAL OR OTHER CONDITIONS, PRIOR SALE, LEASE OR FINANCING, OR WITHDRAWAL WITHOUT NOTICE, AND OF ANY SPECIAL LISTING CONDITIONS IMPOSED BY OUR PRINCIPALS NO WARRANTIES OR REPRESENTATIONS ARE MADE AS TO THE CONDITION OF THE PROPERTY OR ANY HAZARDS CONTAINED THEREIN ARE ANY TO BE IMPLIED.

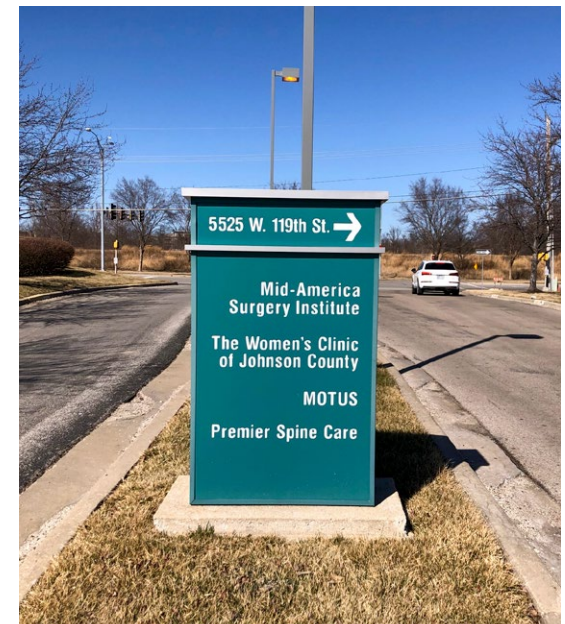
For Lease  
**3,080-8,384 RSF**  
**Medical Suites**

For more information:

**Mike Sonnenberg, CCIM**

+1 913 956 5812

[mike@nai-heartland.com](mailto:mike@nai-heartland.com)



4400 College Boulevard Suite 170

Overland Park, Kansas 66211

+1 913 362 1000

[nai-heartland.com](http://nai-heartland.com)

For Lease  
5525 W 119th St

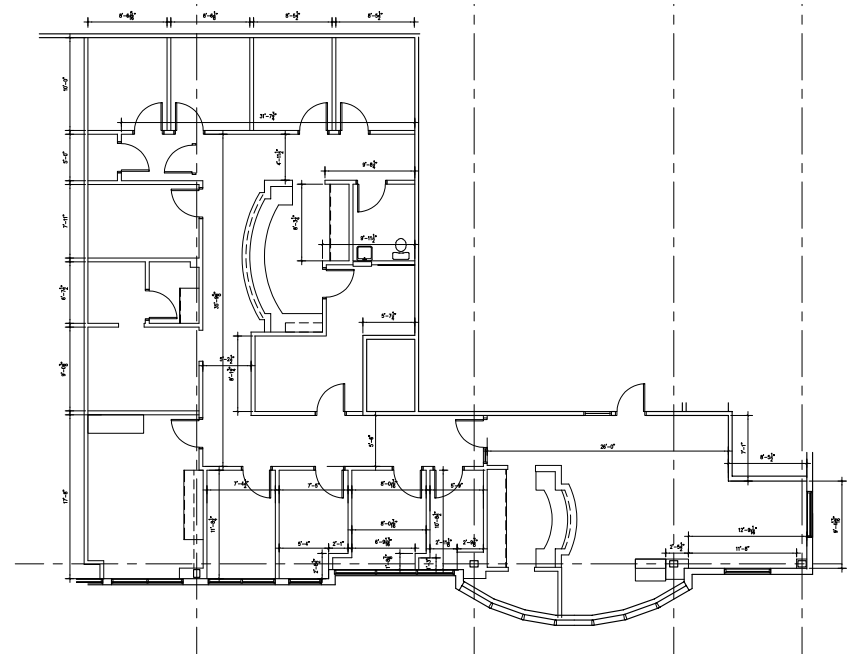


For Lease  
5525 W 119th St

## Suite 200 - 8,384 RSF



## Suite 210 - 3,080 RSF



4400 College Boulevard Suite 170  
Overland Park, Kansas 66211  
+1 913 362 1000  
[nai-heartland.com](http://nai-heartland.com)

For more information:

**Mike Sonnenberg, CCIM**

+1 913 956 5812

[mike@nai-heartland.com](mailto:mike@nai-heartland.com)