

For Sale

## Vacant Land

3.76 Acres | \$15.00 / SF



## Bluebonnet Blvd.

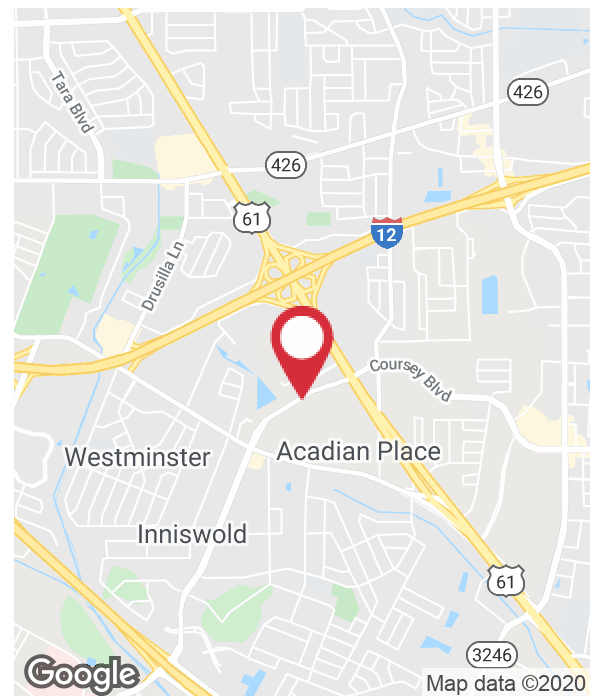
Baton Rouge, Louisiana 70816

### Property Highlights

- Vacant land located in a high growth corridor
- Two separate parcels totaling 3.76 acres located on Bluebonnet Boulevard near Airline Highway
- Tracts are approximately 2.49 and 1.27 acres
- Flood Zone X (Protected by Levee)
- Property Zoned C2 (Heavy Commercial)
- Tracts separated by an easement

### Sale Price

\$15.00 / SF



For more information

### Walt Ketchings

O: 225 297 7705 | C: 225 241 3110  
wketchings@latterblum.com

### Will Watson

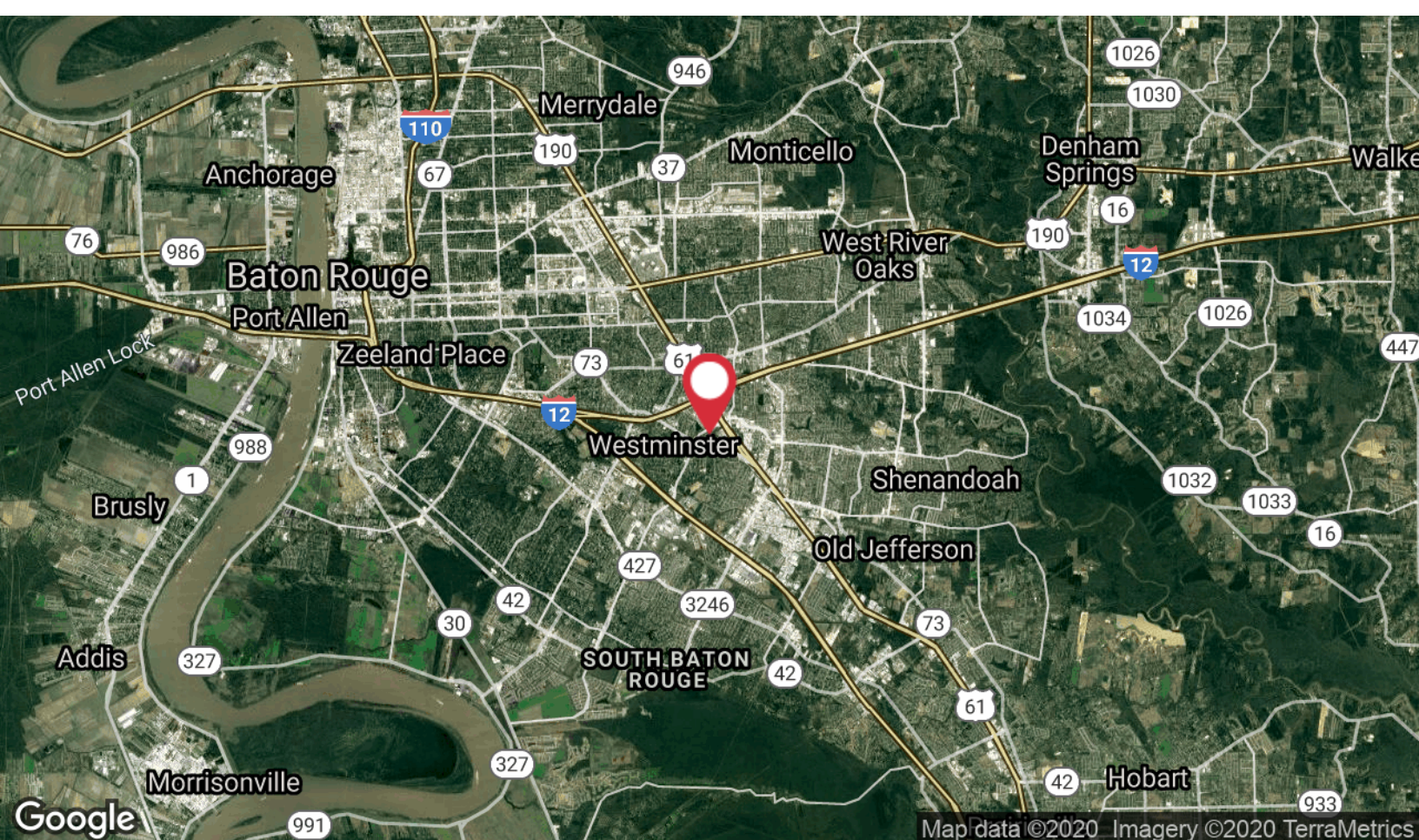
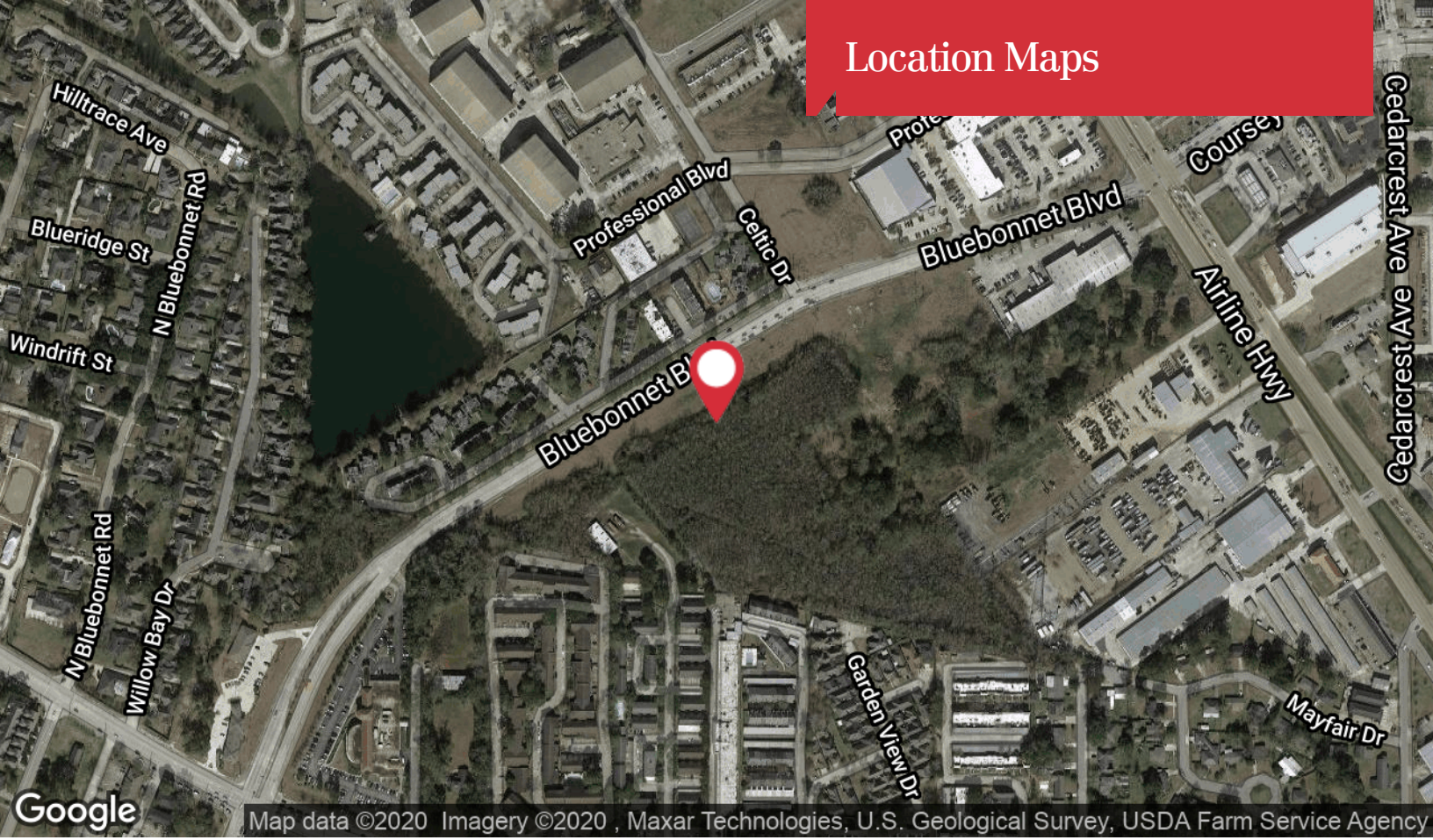
O: 225 295 0800 | C: 318 914 1576  
willwatson@latterblum.com

**CALL OR EMAIL FOR MORE INFORMATION**

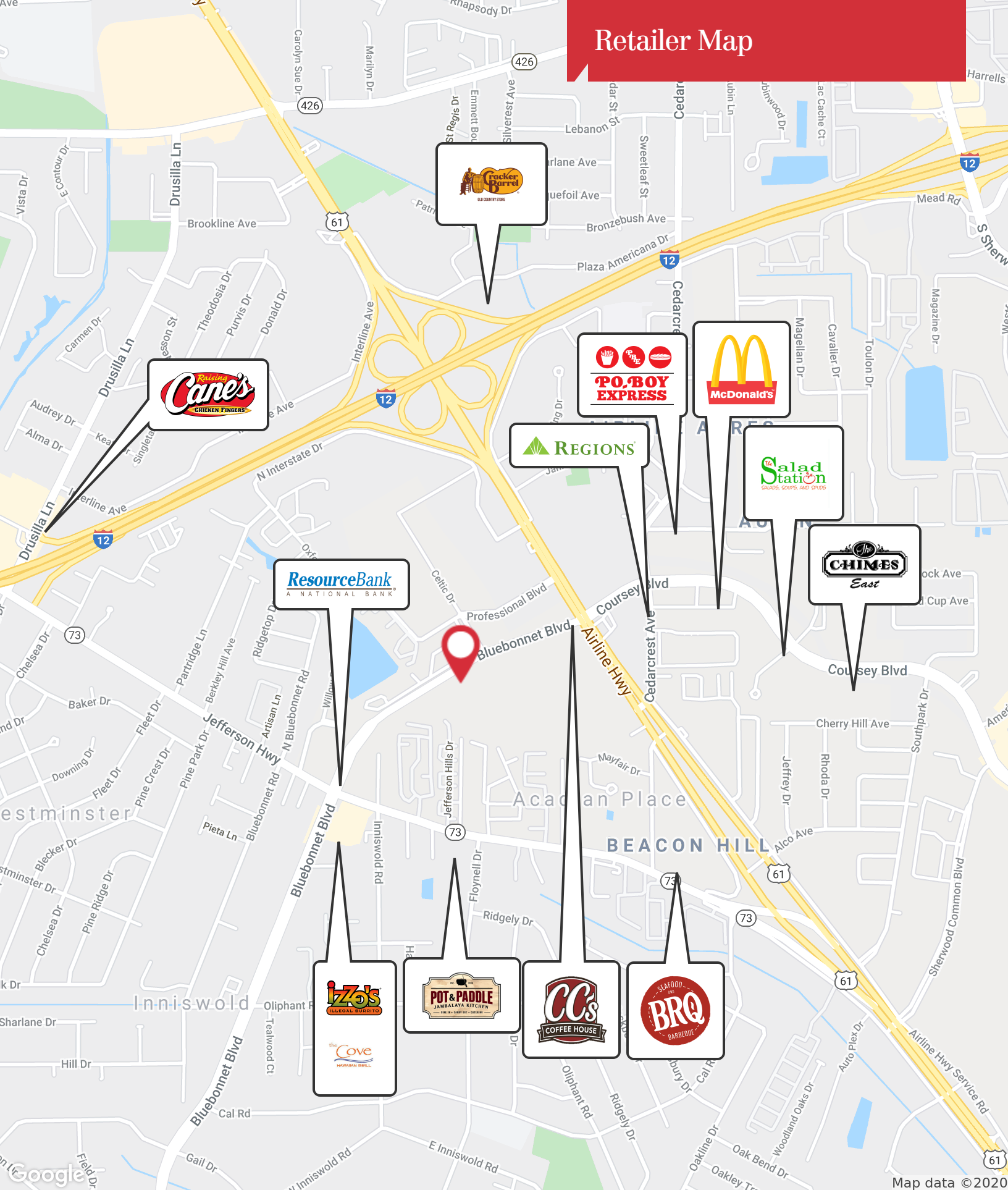
NO WARRANTY OR REPRESENTATION, EXPRESS OR IMPLIED, IS MADE AS TO THE ACCURACY OF THE INFORMATION CONTAINED HEREIN, AND THE SAME IS SUBMITTED SUBJECT TO ERRORS, OMISSIONS, CHANGE OF PRICE, RENTAL OR OTHER CONDITIONS, PRIOR SALE, LEASE OR FINANCING, OR WITHDRAWAL WITHOUT NOTICE, AND OF ANY SPECIAL LISTING CONDITIONS IMPOSED BY OUR PRINCIPALS NO WARRANTIES OR REPRESENTATIONS ARE MADE AS TO THE CONDITION OF THE PROPERTY OR ANY HAZARDS CONTAINED THEREIN ARE ANY TO BE IMPLIED. LICENSED IN LOUISIANA.

1700 City Farm Drive  
Baton Rouge, LA 70806  
225 295 0800 tel  
[latterblum.com](http://latterblum.com)

# Location Maps



# Retailer Map



1700 City Farm Drive  
Baton Rouge, LA 70806  
225 295 0800 tel  
[latterblum.com](http://latterblum.com)

# Property Outline



Google

Map data © 2020 Imagery © 2020 , Maxar Technologies, U.S. Geological Survey, USDA Farm Service Agency