



# 4000 S. Sherwood Forest Blvd

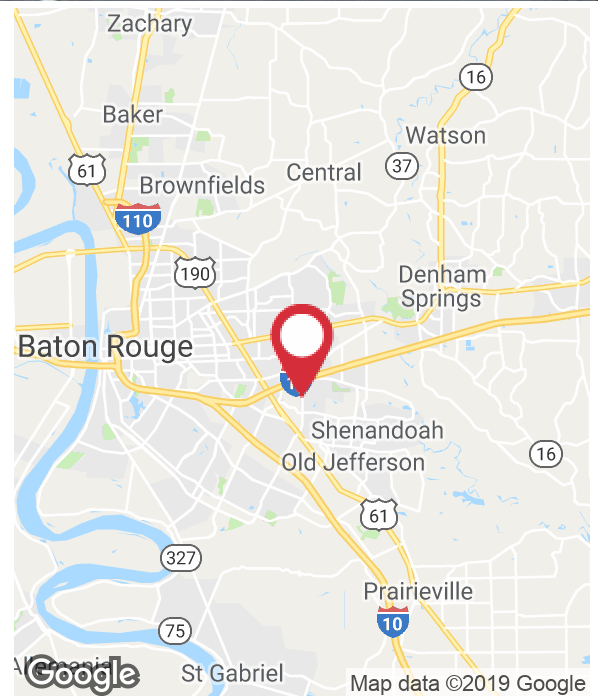
Baton Rouge, Louisiana 70816

## Property Highlights

- Iconic Class A Office Building Located in the Sherwood Sub-Market
- One 6-Story Building and One 2-Story Building
- Formal Lobby and Ample Parking
- Close to Banks, Restaurants, Interstate-12, and Airline Highway

## Lease Rate

\$19.95 SF/yr (Full Service)



For more information

**Jonann Stutzman**

O: 225 297 7864 | C: 225 445 0473  
jonann@latterblum.com

**Ty Gose, SIOR, CCIM**

O: 225 297 7808 | C: 225 295 0800  
ty@latterblum.com

**CALL OR EMAIL FOR MORE INFORMATION**

NO WARRANTY OR REPRESENTATION, EXPRESS OR IMPLIED, IS MADE AS TO THE ACCURACY OF THE INFORMATION CONTAINED HEREIN, AND THE SAME IS SUBMITTED SUBJECT TO ERRORS, OMISSIONS, CHANGE OF PRICE, RENTAL OR OTHER CONDITIONS, PRIOR SALE, LEASE OR FINANCING, OR WITHDRAWAL WITHOUT NOTICE, AND OF ANY SPECIAL LISTING CONDITIONS IMPOSED BY OUR PRINCIPALS NO WARRANTIES OR REPRESENTATIONS ARE MADE AS TO THE CONDITION OF THE PROPERTY OR ANY HAZARDS CONTAINED THEREIN ARE ANY TO BE IMPLIED. LICENSED IN LOUISIANA.

1700 City Farm Drive  
Baton Rouge, LA 70806  
225 295 0800 tel  
**latterblum.com**

March 04, 2019



For Lease

# Office Building

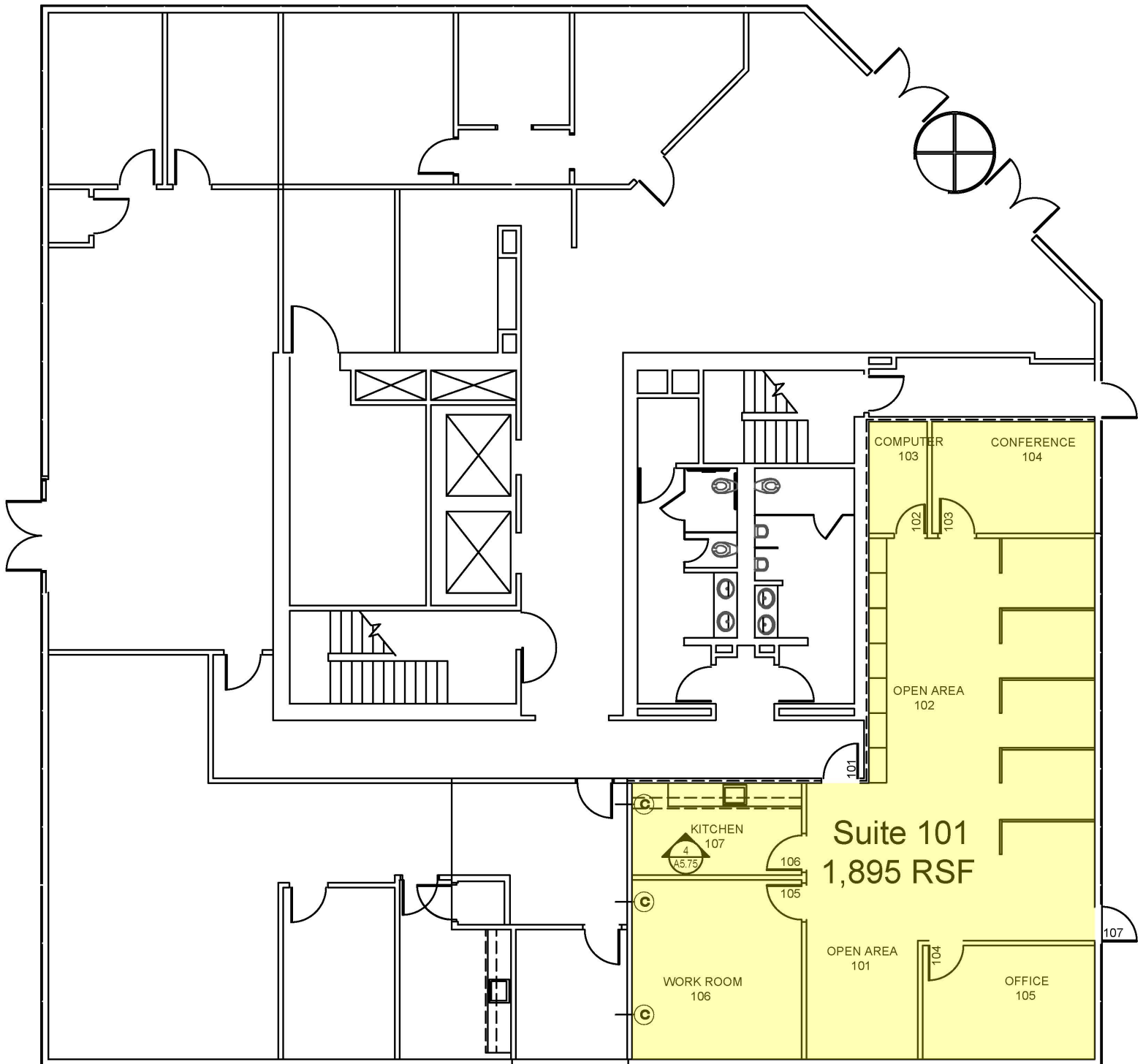
\$19.95 SF/yr



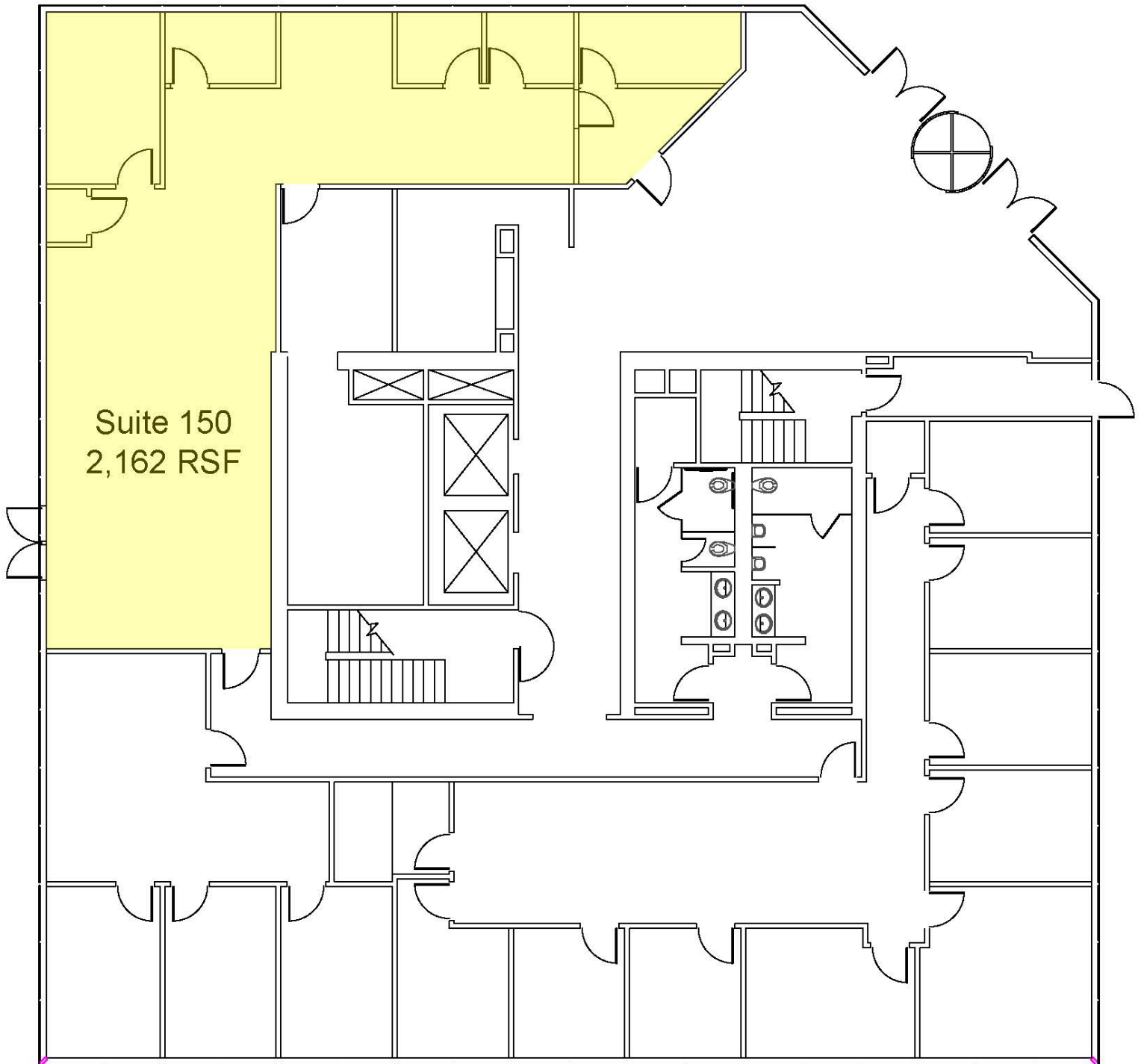
<b>LEASE RATE:</b>	\$19.95 SF/YR	<b>TOTAL SPACE:</b>	4,057 SF
<b>LEASE TYPE:</b>	Full Service	<b>LEASE TERM:</b>	Negotiable

SPACE	SPACE USE	LEASE RATE	LEASE TYPE	SIZE (SF)	TERM	COMMENTS
Suite 101		\$19.95 SF/yr	Full Service	1,895 SF	Negotiable	
Suite 150		\$19.95 SF/yr	Full Service	2,162 SF	Negotiable	

## Suite 101 Floor Plan

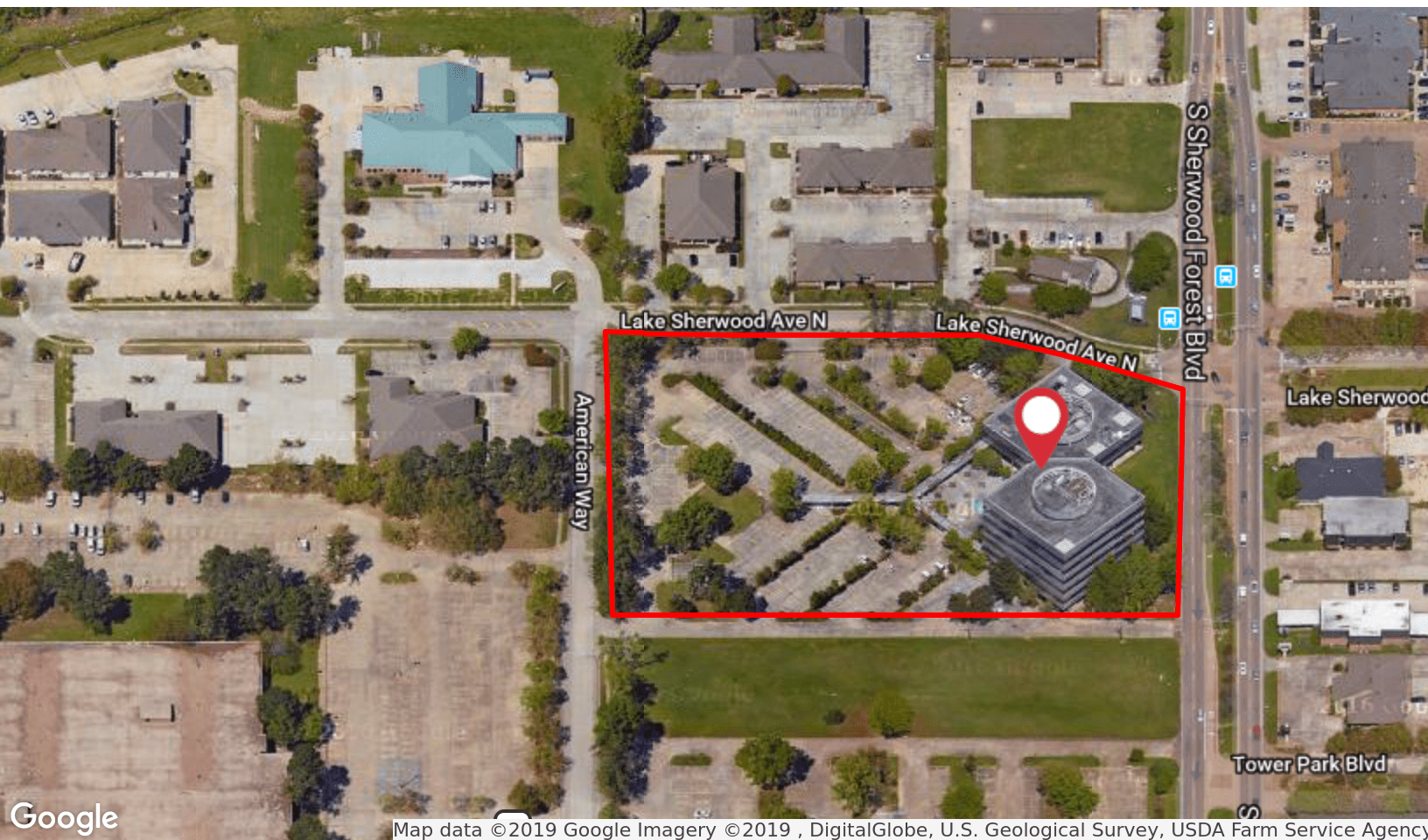


## Suite 150 Floor Plan





## Location Maps



1700 City Farm Drive  
Baton Rouge, LA 70806  
225 295 0800 tel  
**latterblum.com**