



## CitiPlace Centre I

2600 Citiplace Drive, Baton Rouge, Louisiana 70808

### Property Highlights

- Class "A" Office Space
- Great PUD Parking
- Located in Baton Rouge's Business Epicenter
- Walking Distance to Restaurants, Hotels, & Banks
- Full Service Lease

### Lease Rate

\$23.00 PSF



For more information

**Jonann Stutzman**

O: 225 297 7864 | C: 225 445 0473  
jonann@latterblum.com

**Ty Gose, SIOR, CCIM**

O: 225 295 0800 | C: 225 297 7808  
ty@latterblum.com

**CALL OR EMAIL FOR MORE INFORMATION**

NO WARRANTY OR REPRESENTATION, EXPRESS OR IMPLIED, IS MADE AS TO THE ACCURACY OF THE INFORMATION CONTAINED HEREIN, AND THE SAME IS SUBMITTED SUBJECT TO ERRORS, OMISSIONS, CHANGE OF PRICE, RENTAL OR OTHER CONDITIONS, PRIOR SALE, LEASE OR FINANCING, OR WITHDRAWAL WITHOUT NOTICE, AND OF ANY SPECIAL LISTING CONDITIONS IMPOSED BY OUR PRINCIPALS NO WARRANTIES OR REPRESENTATIONS ARE MADE AS TO THE CONDITION OF THE PROPERTY OR ANY HAZARDS CONTAINED THEREIN ARE ANY TO BE IMPLIED. LICENSED IN LOUISIANA.

1700 City Farm Drive  
Baton Rouge, LA 70806  
225 295 0800 tel  
[latterblum.com](http://latterblum.com)

# Available Spaces



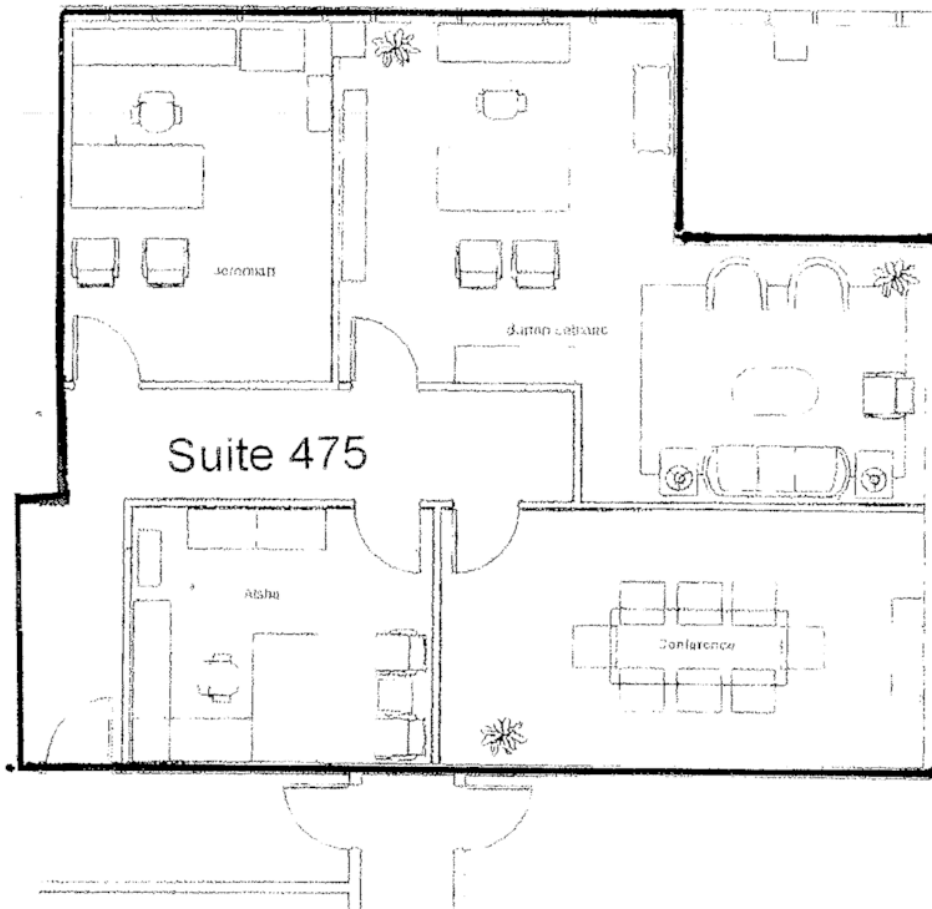
**LEASE RATE:** \$23.00 PSF      **TOTAL SPACE:** 1,348 - 1,524 SF  
**LEASE TYPE:** Full Service      **LEASE TERM:** Negotiable

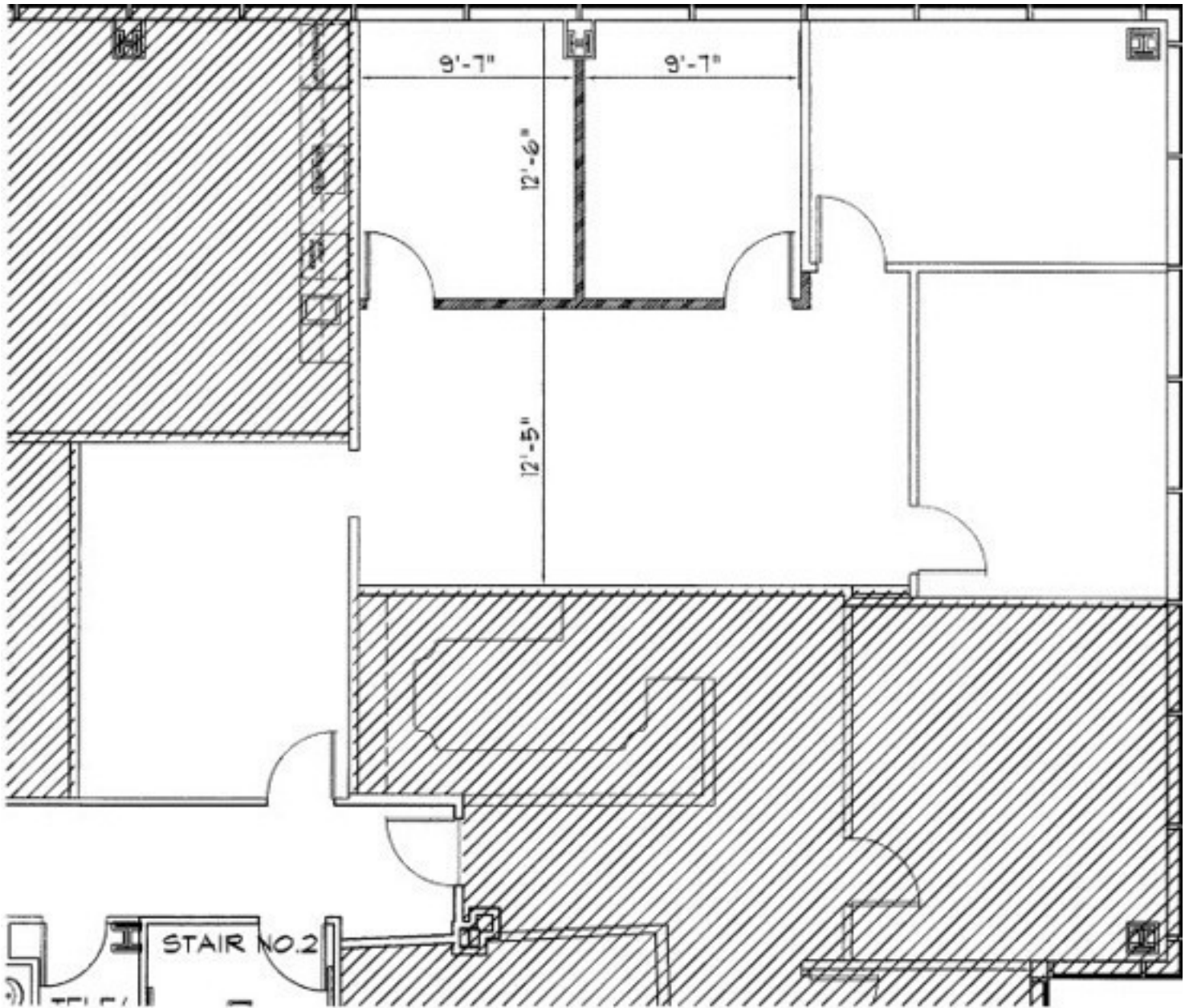
SPACE	LEASE RATE	LEASE TYPE	SIZE (SF)
Suite 475	\$23.00 SF/yr	Full Service	1,524 SF
Suite 525	\$23.00 SF/yr	Full Service	1,348 SF



CitiPlace Centre I

Suite 475 1,524 sq feet





Suite 525 - 1,348 RSF

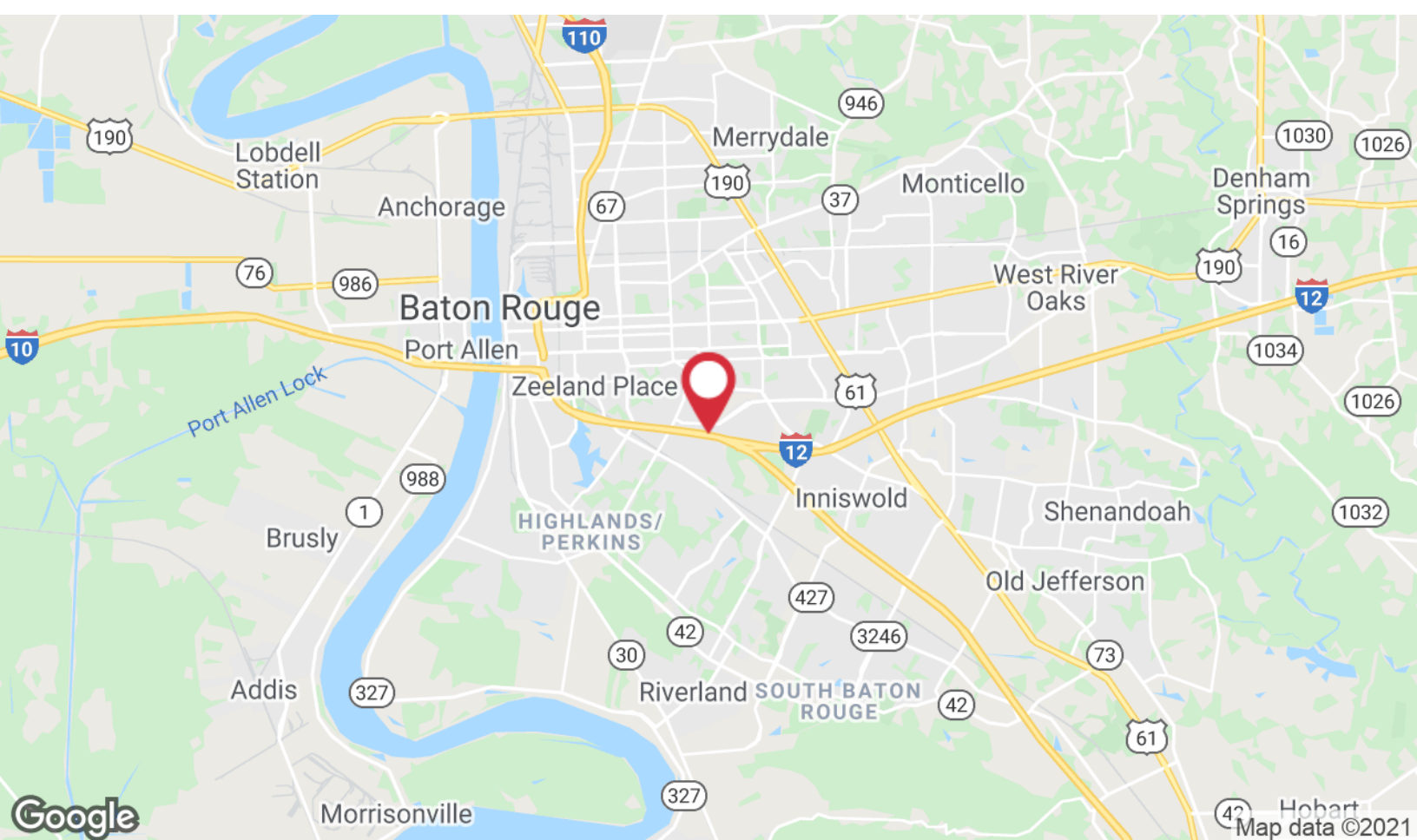
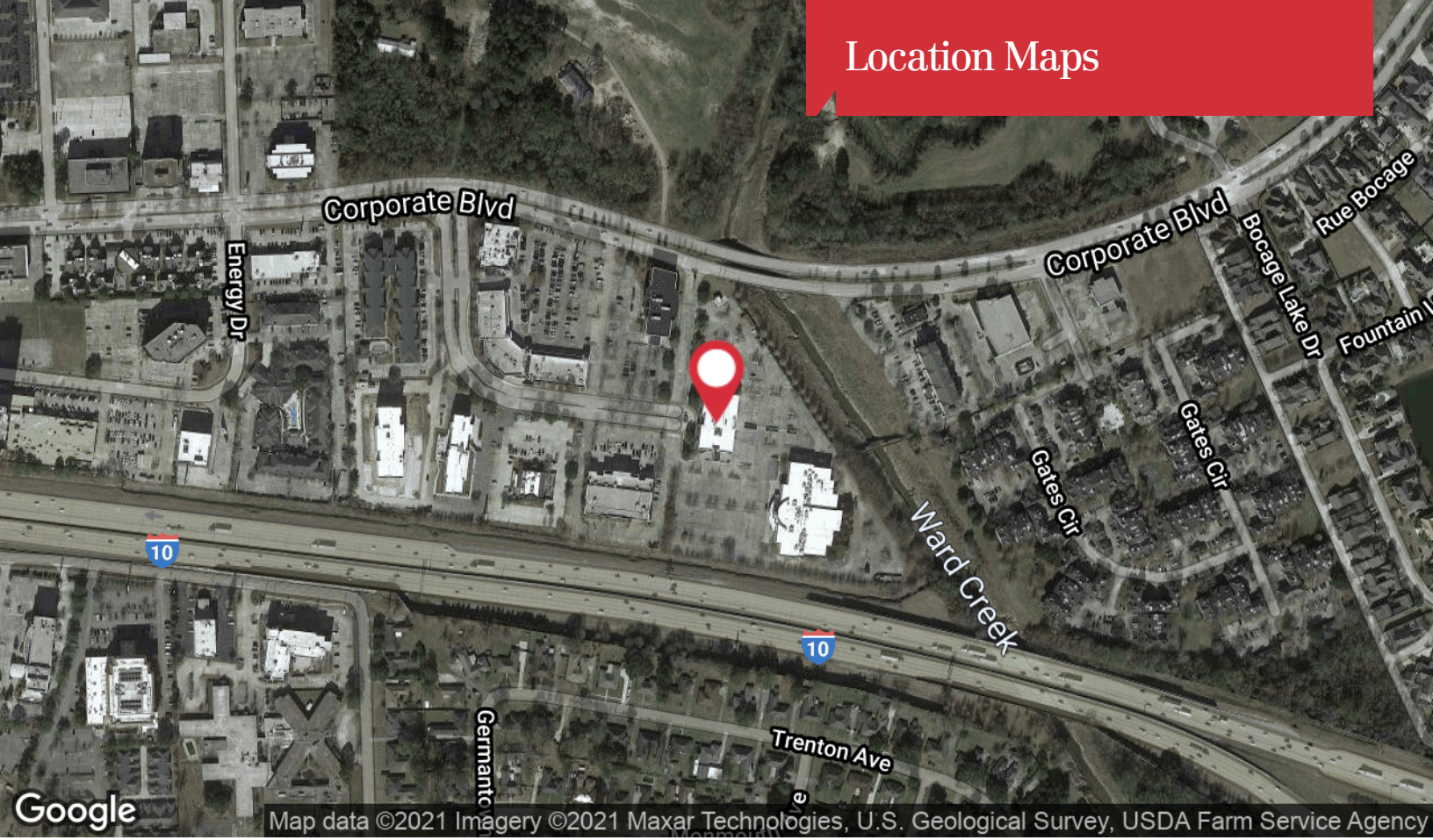


# Additional Photos





# Location Maps



1700 City Farm Drive  
Baton Rouge, LA 70806  
225 295 0800 tel  
[latterblum.com](http://latterblum.com)