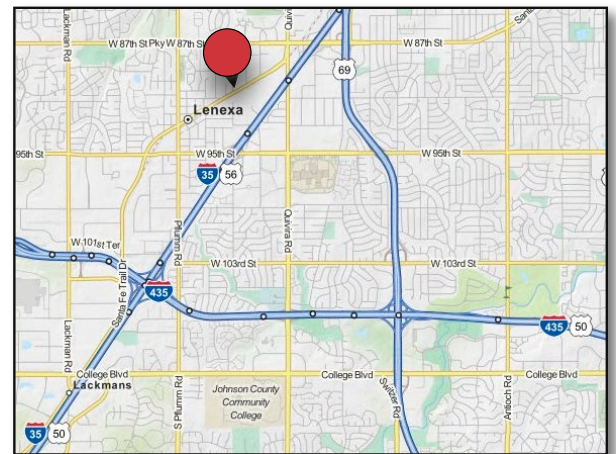




92nd & Rosehill Road

Lenexa, Kansas 66215

- Key Johnson County infill location with I-35 access
- Can support 5-15,000 SF buildings with or without storage yards
- Build-to-suit for lease or sale opportunities
- Affordable yet attractive metal & masonry construction
- Another quality Rose Design/Build development project
- Learn more about Rose's 90+ years of experience at www.BuildWithRose.com



For more information contact:

Logan Rose

+1 913 890 2013

lrose@nai-heartland.com

Nathan Anderson, SIOR, CCIM

+1 913 890 2001

nathan@nai-heartland.com

NO WARRANTY OR REPRESENTATION, EXPRESS OR IMPLIED, IS MADE AS TO THE ACCURACY OF THE INFORMATION CONTAINED HEREIN, AND THE SAME IS SUBMITTED SUBJECT TO ERRORS, OMISSIONS, CHANGE OF PRICE, RENTAL OR OTHER CONDITIONS, PRIOR SALE, LEASE OR FINANCING, OR WITHDRAWAL WITHOUT NOTICE, AND OF ANY SPECIAL LISTING CONDITIONS IMPOSED BY OUR PRINCIPALS NO WARRANTIES OR REPRESENTATIONS ARE MADE AS TO THE CONDITION OF THE PROPERTY OR ANY HAZARDS CONTAINED THEREIN ARE ANY TO BE IMPLIED.

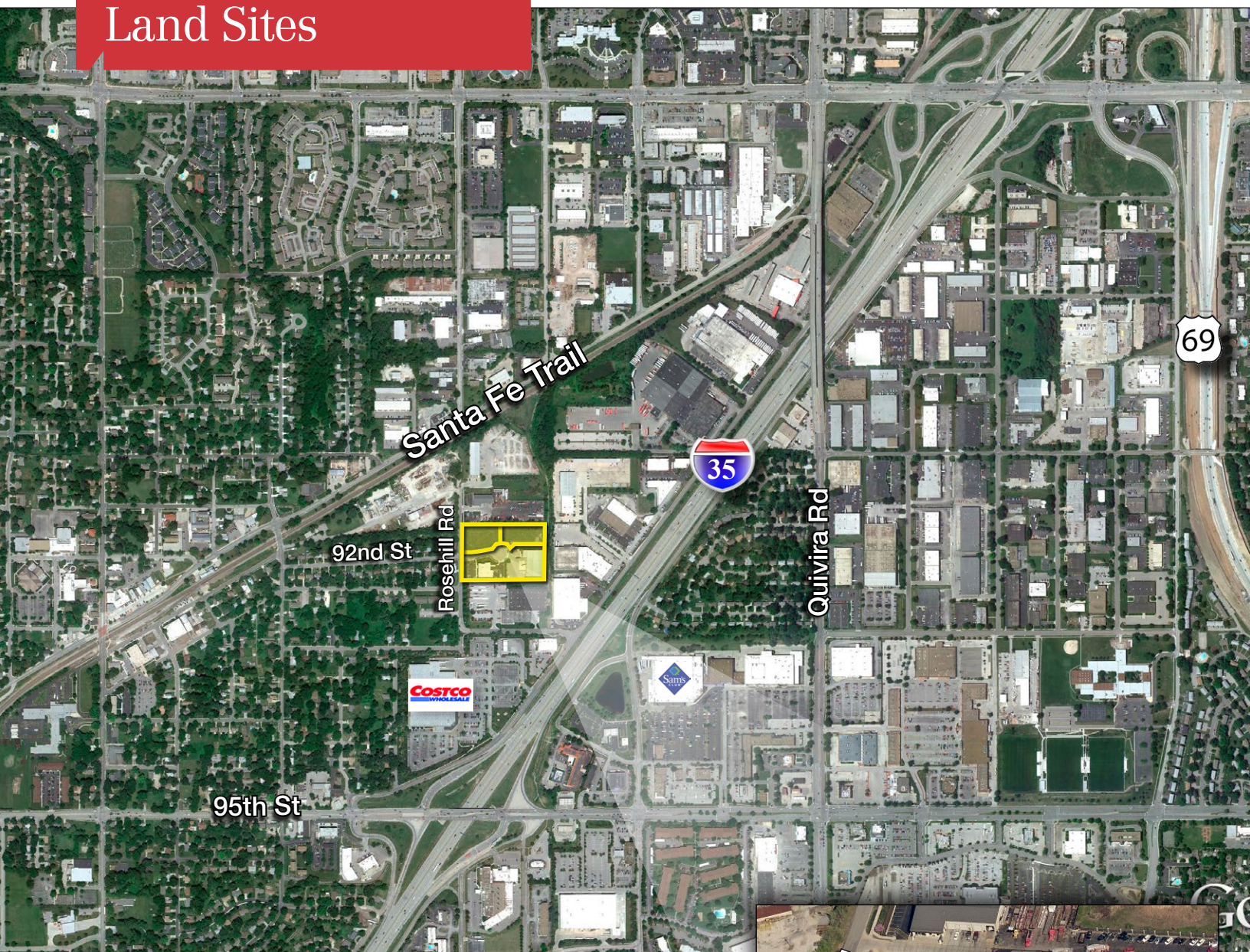
4400 College Boulevard, Suite 170

Overland Park, Kansas 66211

+1 913 362 1000

nai-heartland.com

For Sale or Build-to-Suit
**Industrial/Flex
Land Sites**



For more information contact:

Logan Rose

+1 913 890 2013

lrose@nai-heartland.com

Nathan Anderson, SIOR, CCIM

+1 913 890 2001

nathan@nai-heartland.com



NAIHeartland

4400 College Boulevard, Suite 170

Overland Park, Kansas 66211

+1 913 362 1000

nai-heartland.com

For Sale or Build-to-Suit
**Industrial/Flex
 Land Sites**

Office / Flex / Industrial Lots

	Max Bldg SF	Lot Size SF	Lot Price/SF	Lot Price
1	10,500	45,022	SOLD	SOLD
2	25,130	69,310	SOLD	SOLD
3	10,080	49,166	\$5.00	\$245,830.00
4	9,600	47,976	\$5.00	\$239,880.00

Zoning: BP1 - Planned Business Park
 Lenexa City Hall 913.477.7711
www.ci.lenexa.ks.us

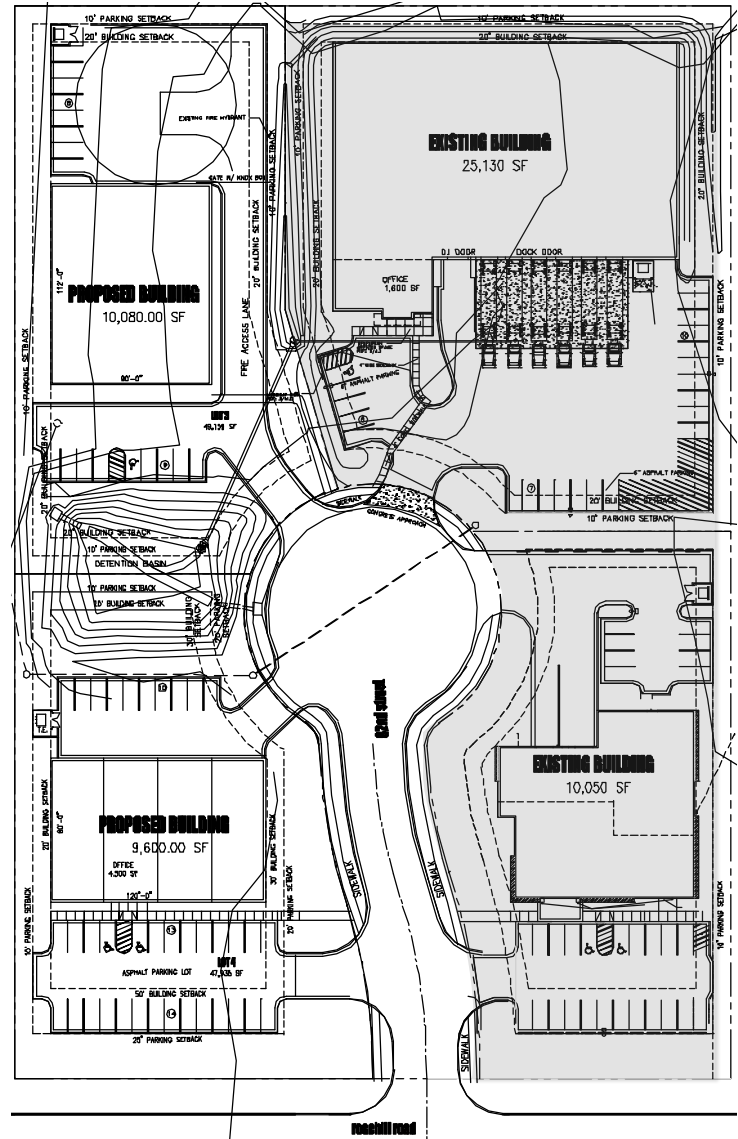
Utility Information:

Water: JoCo Water District #1913.895.1800
 Sewer: JoCo Wastewater 913.715.8520
 Gas: Kansas Gas Service 800.794.4780
 Electric: KC Power & Light 816.471.5275

Parcel ID: Lot 3 - IP64650000 0002
 Lot 4 - IP64650000 0003

Economic Incentives: KS Dept. of Commerce
 785.296.3481

Comments: Contact us for more information on
 build-to-suit options.



For more information contact:

Logan Rose

+1 913 890 2013
lrose@nai-heartland.com

Nathan Anderson, SIOR, CCIM

+1 913 890 2001
nathan@nai-heartland.com

NAIHeartland

4400 College Boulevard, Suite 170
 Overland Park, Kansas 66211
 +1 913 362 1000
nai-heartland.com

For Sale or Build-to-Suit Industrial/Flex Land Sites

Alternate Layout

