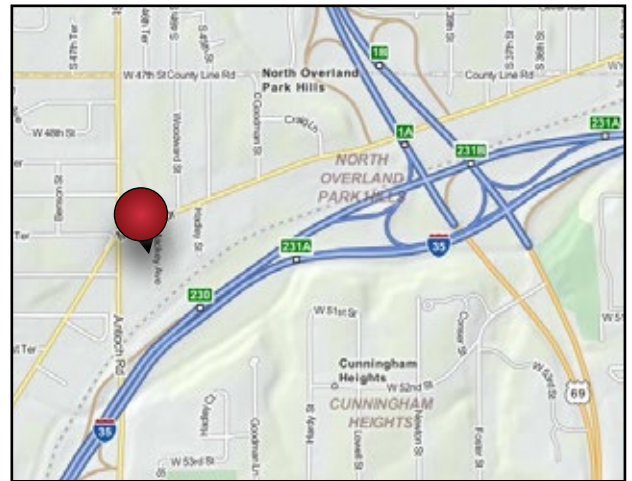




Available For Lease
5000 Mackey St
Overland Park, KS
 Office & Warehouse Space

PROPERTY DATA

Unit Size:	3,168 SF (Unit F)
Warehouse Clear Height:	16'-18'
Zoning:	M-2 General Industrial District
Loading:	One (1) dock high loading door
Construction Type:	Pre-engineered metal panels Insulated sidewalls and roof
Heat Type:	Overhead gas unit
Lighting:	Overhead fluorescent strip fixtures
Updates:	New exterior metal siding being installed
Lease Type:	Industrial Gross
Lease Rate:	\$6.25 PSF (\$1,650/month) plus CAM charges



For more information contact:

Nathan Anderson, SIOR, CCIM

+1 913 890 2001
 nathan@nai-heartland.com

Logan Rose

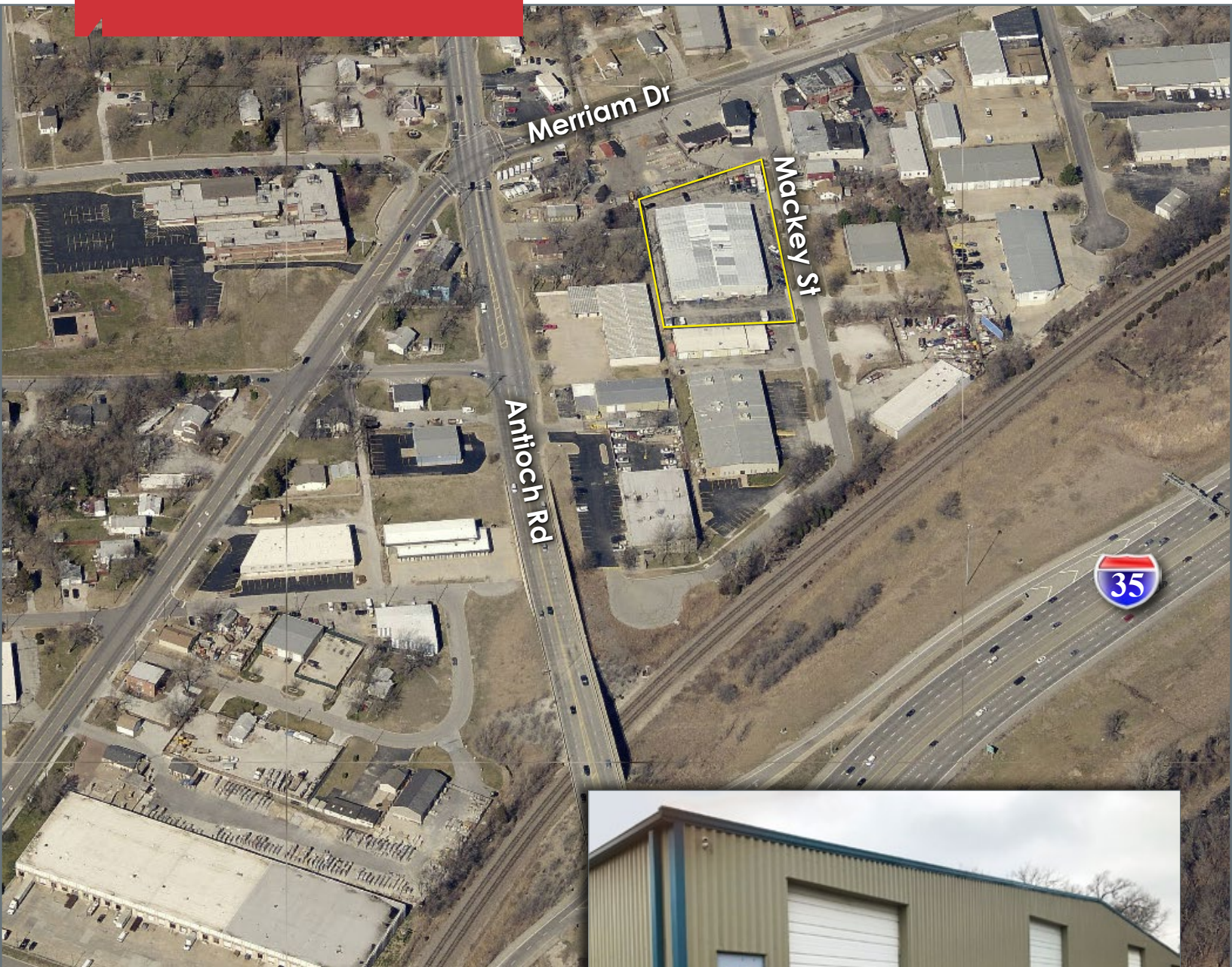
+1 913 890 2013
 lrose@nai-heartland.com

NO WARRANTY OR REPRESENTATION, EXPRESS OR IMPLIED, IS MADE AS TO THE ACCURACY OF THE INFORMATION CONTAINED HEREIN, AND THE SAME IS SUBMITTED SUBJECT TO ERRORS, OMISSIONS, CHANGE OF PRICE, RENTAL OR OTHER CONDITIONS, PRIOR SALE, LEASE OR FINANCING, OR WITHDRAWAL WITHOUT NOTICE, AND OF ANY SPECIAL LISTING CONDITIONS IMPOSED BY OUR PRINCIPALS NO WARRANTIES OR REPRESENTATIONS ARE MADE AS TO THE CONDITION OF THE PROPERTY OR ANY HAZARDS CONTAINED THEREIN ARE ANY TO BE IMPLIED.

4400 College Boulevard Suite 170
 Overland Park, Kansas 66211
 +1 913 362 1000
nai-heartland.com

Available For Lease

5000 Mackey St



For more information contact:

Nathan Anderson, SIOR, CCIM

+1 913 890 2001
nathan@nai-heartland.com

Logan Rose

+1 913 890 2013
lrose@nai-heartland.com



NAI Heartland

4400 College Boulevard Suite 170
Overland Park, Kansas 66211
+1 913 362 1000
nai-heartland.com