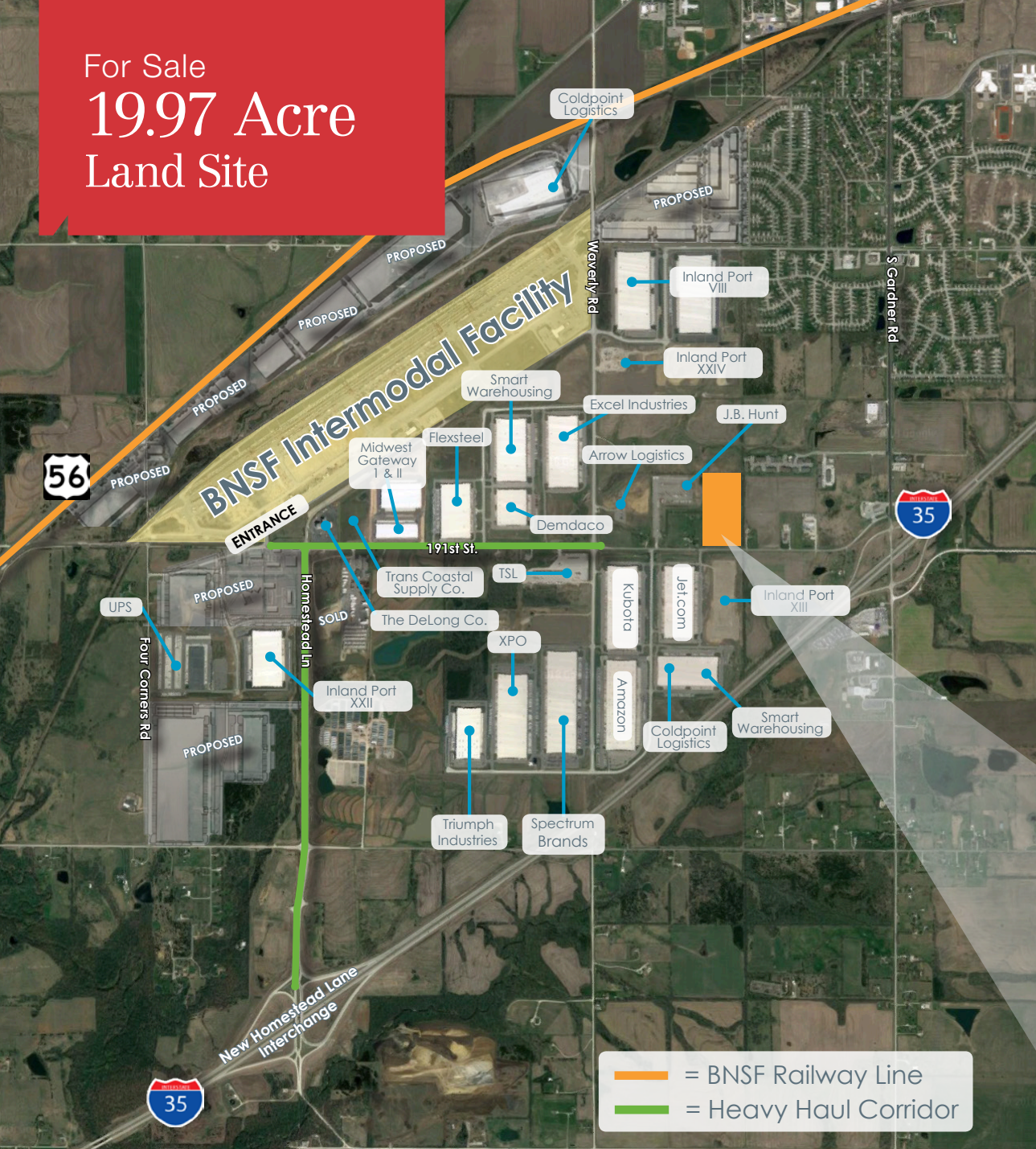


For Sale
19.97 Acre
 Land Site



NAI Heartland

19.97 Acre Site

191st Street & Waverly Rd. | Gardner Twp, KS

Property Features

- 19.97 Acres available for sale
- Sandwiched between two fast-growing cities along 191st street near the I-35/Gardner Road interchange
- Currently Zoned RUR 'Rural' with potential to up-zone
- Flat and conducive for development

• *Sale Price Reduced: \$2,250,000 (± \$2.59/SF)*



NO WARRANTY OR REPRESENTATION, EXPRESS OR IMPLIED, IS MADE AS TO THE ACCURACY OF THE INFORMATION CONTAINED HEREIN, AND THE SAME IS SUBMITTED SUBJECT TO ERRORS, OMISSIONS, CHANGE OF PRICE, RENTAL OR OTHER CONDITIONS, PRIOR SALE, LEASE OR FINANCING, OR WITHDRAWAL WITHOUT NOTICE, AND OF ANY SPECIAL LISTING CONDITIONS IMPOSED BY OUR PRINCIPALS NO WARRANTIES OR REPRESENTATIONS ARE MADE AS TO THE CONDITION OF THE PROPERTY OR ANY HAZARDS CONTAINED THEREIN ARE ANY TO BE IMPLIED.

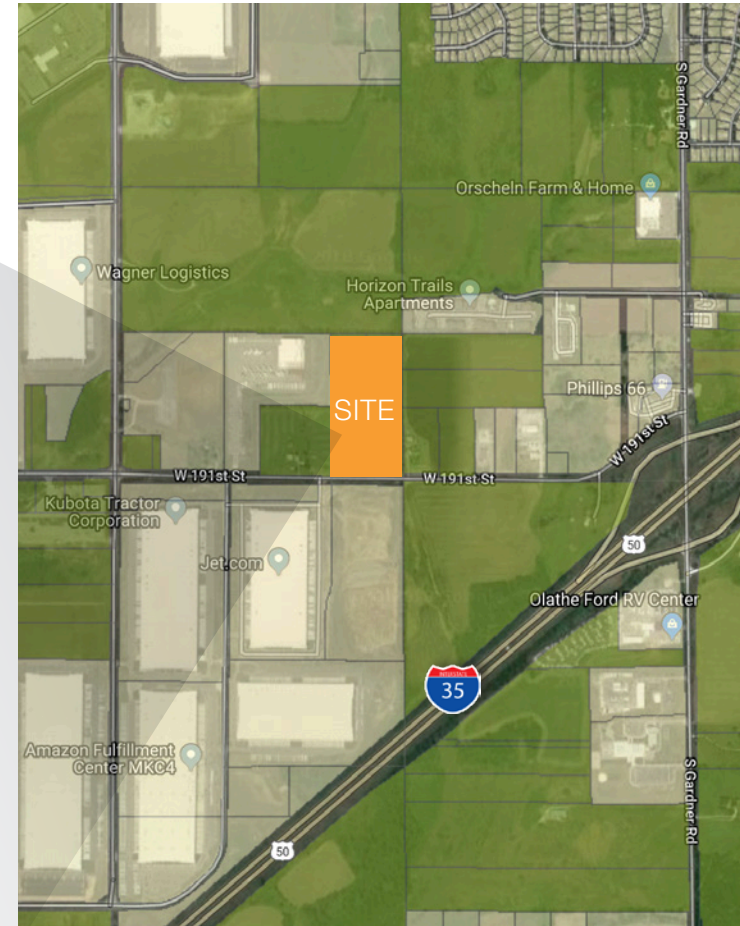
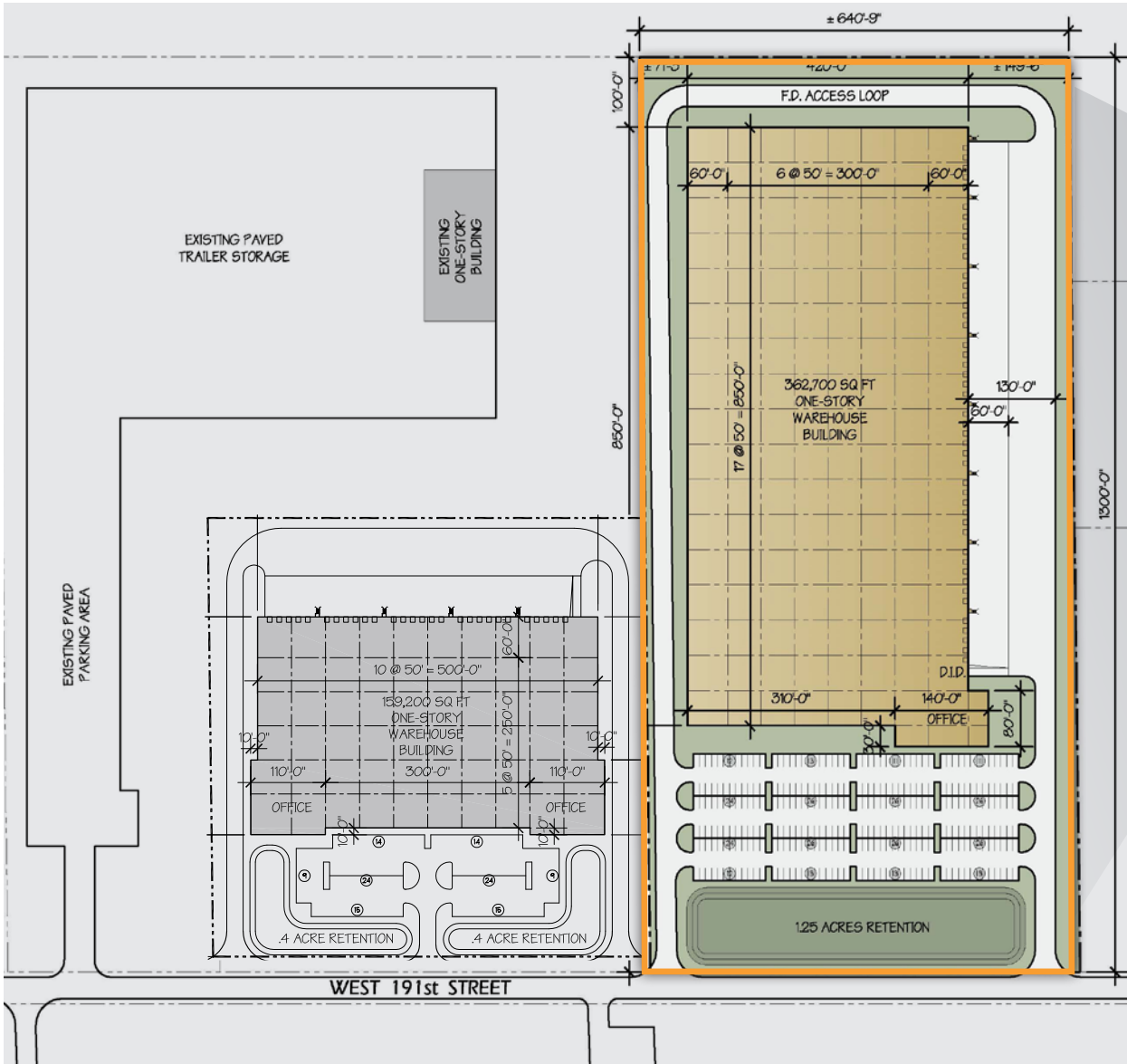
4400 College Blvd Suite 170
 Overland Park, Kansas 66211
 +1 913 362 1000
nai-heartland.com

Russell Pearson, CCIM

+1 913 890 2015
russell@nai-heartland.com

Site Plan

Proposed Site Plan Option:



For more information:

Russell Pearson, CCIM

+1 913 890 2015

russell@nai-heartland.com