



Available For Lease  
**6,585 RSF**  
Office Suite



## 9101 West 110th Street

Overland Park, Kansas

### Property Features

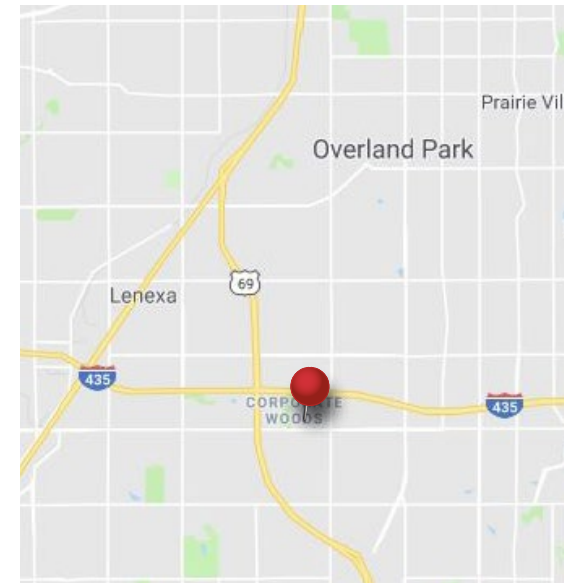
- Exceptional space in the heart of Corporate Woods
- Approximately 6,585 RSF for lease
- First floor with 3 sides of exterior glass
- Separate exit/entrance for ease of access and autonomy
- Exposed deck and efficient layout
- 12 Exterior Offices, Executive Conference Room & workstation areas throughout
- Lease Rate: \$22/SF

For more information:

**Brandon LaSala**

+1 913 956 5815

brandon@nai-heartland.com



NO WARRANTY OR REPRESENTATION, EXPRESS OR IMPLIED, IS MADE AS TO THE ACCURACY OF THE INFORMATION CONTAINED HEREIN, AND THE SAME IS SUBMITTED SUBJECT TO ERRORS, OMISSIONS, CHANGE OF PRICE, RENTAL OR OTHER CONDITIONS, PRIOR SALE, LEASE OR FINANCING, OR WITHDRAWAL WITHOUT NOTICE, AND OF ANY SPECIAL LISTING CONDITIONS IMPOSED BY OUR PRINCIPALS NO WARRANTIES OR REPRESENTATIONS ARE MADE AS TO THE CONDITION OF THE PROPERTY OR ANY HAZARDS CONTAINED THEREIN ARE ANY TO BE IMPLIED.

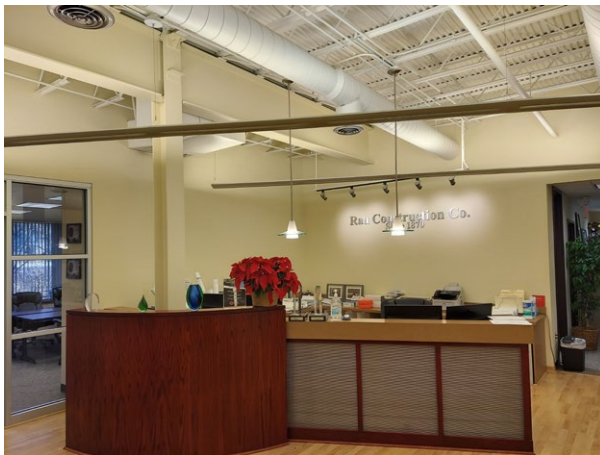
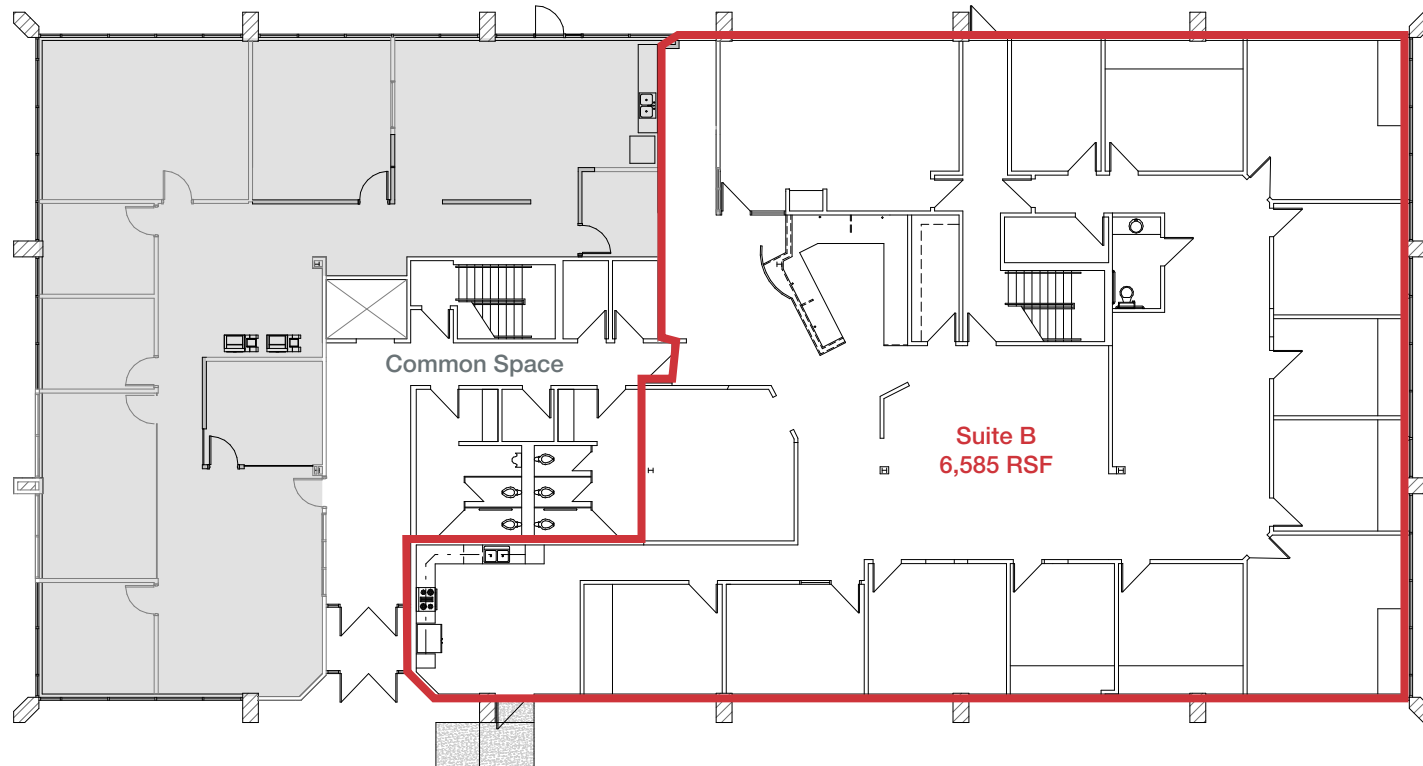
4400 College Boulevard Suite 170  
Overland Park, Kansas 66211  
+1 913 362 1000

[nai-heartland.com](http://nai-heartland.com)









For more information:

**Brandon LaSala**

+1 913 956 5815 • [brandon@nai-heartland.com](mailto:brandon@nai-heartland.com)