



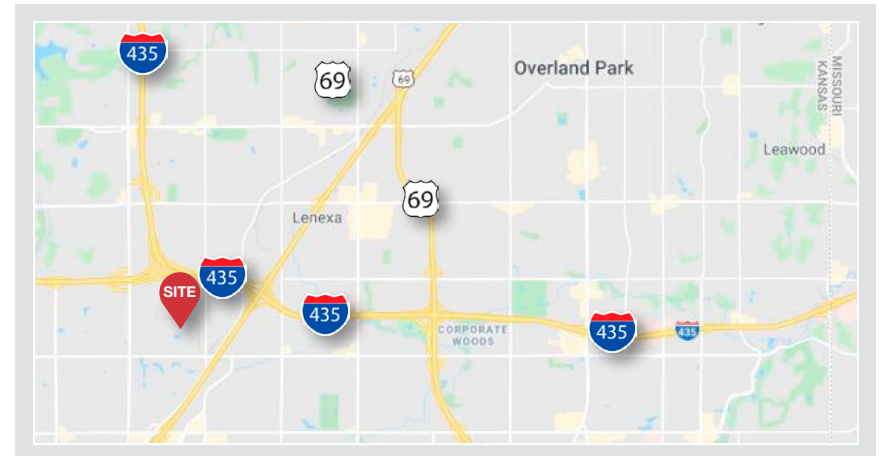
Available For Sublease
63,000 SF High-Tech Production
Facility w/ Creative Offices

15500 W 108th Street

Lenexa, Kansas

Property Features

- 63,000 SF High-Tech Production Facility with Creative Offices
- Fully Air-Conditioned Warehouse/Production Areas
- 16,000 SF of Creative Offices on two levels
- Dock-high and drive-in loading - Fenced Yard Area
- LED High-Bay warehouse lighting throughout
- Current Term through February 2022 (longer terms available)
- Sublease Rate: \$5.50 PSF Gross (\$28,875.00 per month)



For more information:

Nathan Anderson, SIOR, CCIM

+1 913 890 2001 • nathan@nai-heartland.com

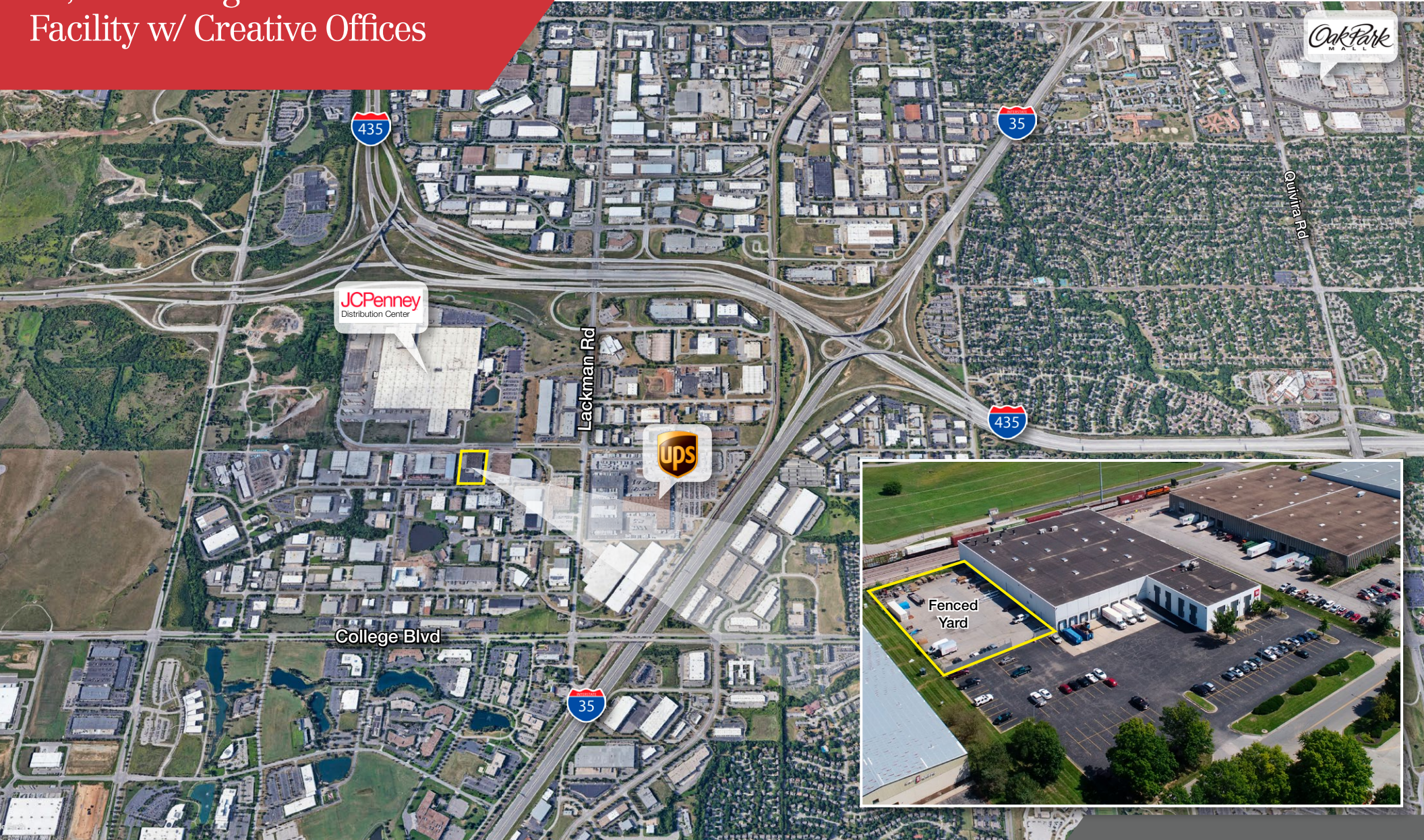
NO WARRANTY OR REPRESENTATION, EXPRESS OR IMPLIED, IS MADE AS TO THE ACCURACY OF THE INFORMATION CONTAINED HEREIN, AND THE SAME IS SUBMITTED SUBJECT TO ERRORS, OMISSIONS, CHANGE OF PRICE, RENTAL OR OTHER CONDITIONS, PRIOR SALE, LEASE OR FINANCING, OR WITHDRAWAL WITHOUT NOTICE, AND OF ANY SPECIAL LISTING CONDITIONS IMPOSED BY OUR PRINCIPALS NO WARRANTIES OR REPRESENTATIONS ARE MADE AS TO THE CONDITION OF THE PROPERTY OR ANY HAZARDS CONTAINED THEREIN ARE ANY TO BE IMPLIED.

4400 College Boulevard Suite 170
Overland Park, Kansas 66211
+1 913 362 1000
nai-heartland.com

Available For Sublease
63,000 SF High-Tech Production
Facility w/ Creative Offices

NAIHeartland

Oak Park
MALL



For more information:

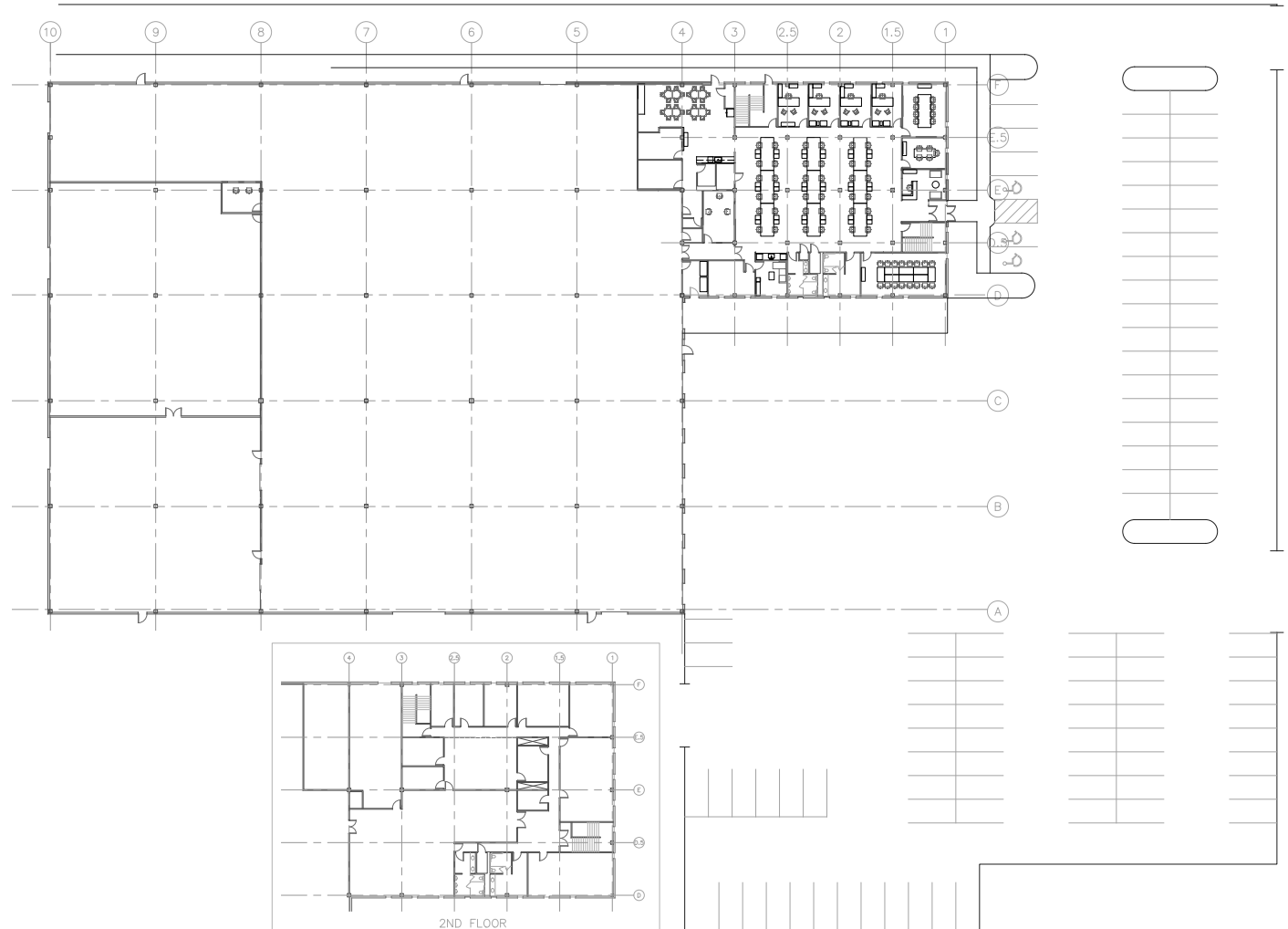
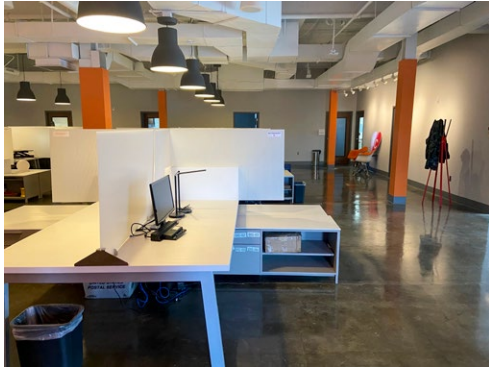
Nathan Anderson, SIOR, CCIM

+1 913 890 2001 • nathan@nai-heartland.com

4400 College Boulevard Suite 170
Overland Park, Kansas 66211
+1 913 362 1000
nai-heartland.com

Available For Sublease
63,000 SF High-Tech Production
Facility w/ Creative Offices

NAIHeartland



For more information:

Nathan Anderson, SIOR, CCIM

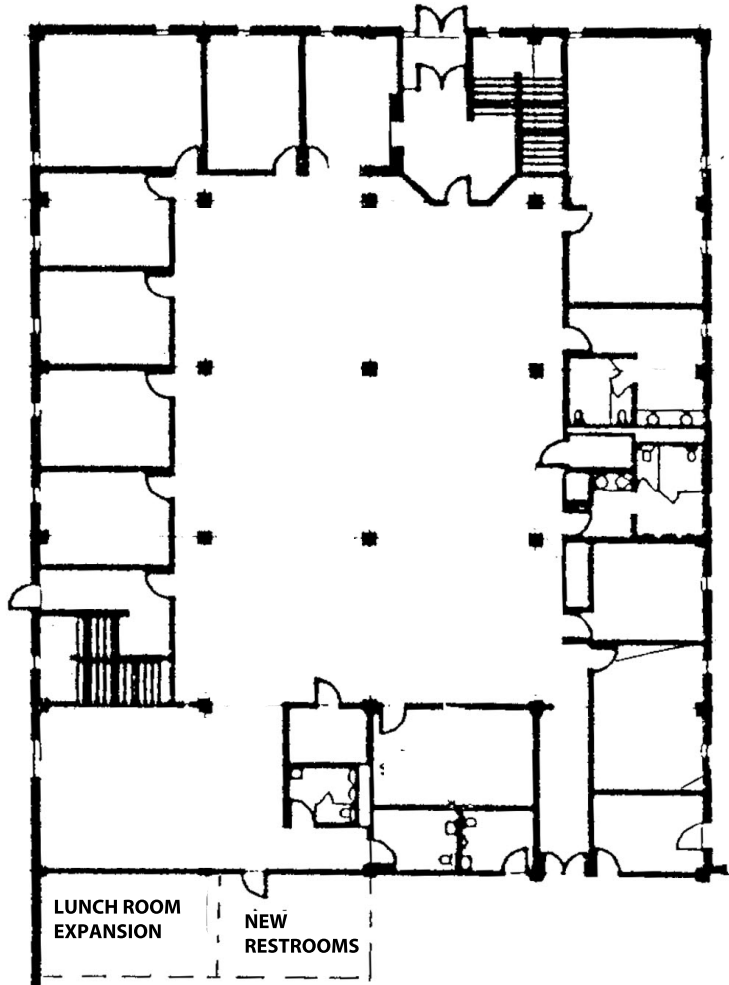
+1 913 890 2001 • nathan@nai-heartland.com

4400 College Boulevard Suite 170
Overland Park, Kansas 66211
+1 913 362 1000
nai-heartland.com

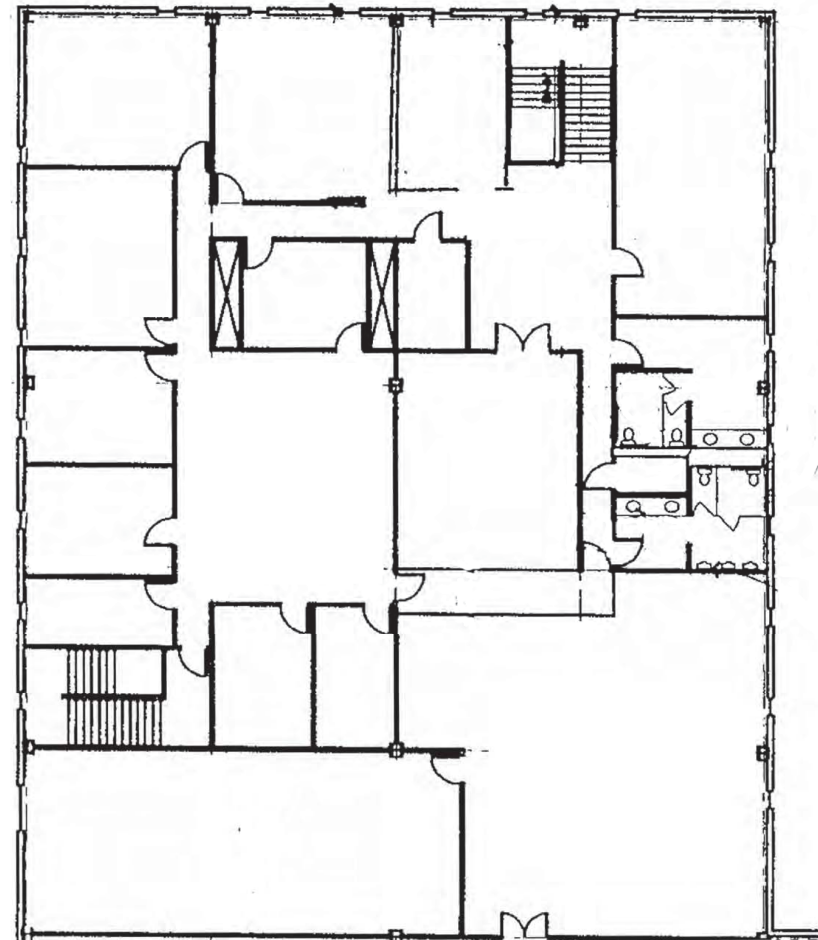
Available For Sublease
63,000 SF High-Tech Production
Facility w/ Creative Offices



First Floor



Second Floor



For more information:

Nathan Anderson, SIOR, CCIM

+1 913 890 2001 • nathan@nai-heartland.com

4400 College Boulevard Suite 170
Overland Park, Kansas 66211
+1 913 362 1000
nai-heartland.com