



## 615 Chevelle Ct Bldg A

Baton Rouge, Louisiana 70806

### Property Highlights

- 8,775 SF Available for Sale
- Currently configured as a Call Center
- 9/1000 Parking Ratio
- Easy access to I-12
- Available Now

### Sale Price

\$100.00 / SF



For more information

**Ty Gose, SIOR, CCIM**

O: 225 295 0800 | C: 225 297 7808  
ty@latterblum.com

**Michael Cashio, CCIM**

O: 225 295 0800 | C: 225 247 9812  
mcashio@latterblum.com

**CALL OR EMAIL FOR MORE INFORMATION**

NO WARRANTY OR REPRESENTATION, EXPRESS OR IMPLIED, IS MADE AS TO THE ACCURACY OF THE INFORMATION CONTAINED HEREIN, AND THE SAME IS SUBMITTED SUBJECT TO ERRORS, OMISSIONS, CHANGE OF PRICE, RENTAL OR OTHER CONDITIONS, PRIOR SALE, LEASE OR FINANCING, OR WITHDRAWAL WITHOUT NOTICE, AND OF ANY SPECIAL LISTING CONDITIONS IMPOSED BY OUR PRINCIPALS NO WARRANTIES OR REPRESENTATIONS ARE MADE AS TO THE CONDITION OF THE PROPERTY OR ANY HAZARDS CONTAINED THEREIN ARE ANY TO BE IMPLIED. LICENSED IN LOUISIANA.

1700 City Farm Drive  
Baton Rouge, LA 70806  
225 295 0800 tel  
[latterblum.com](http://latterblum.com)

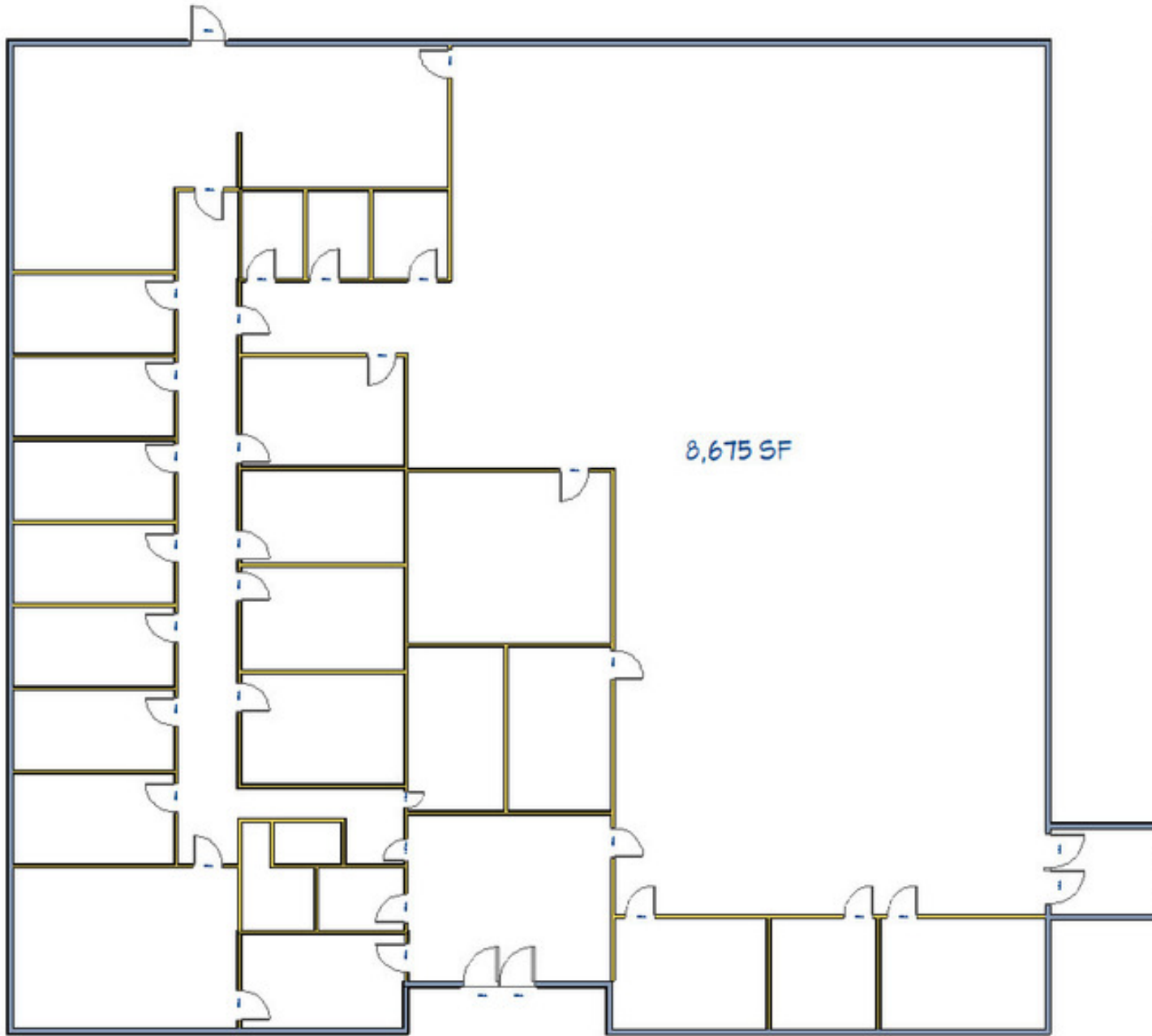
March 18, 2021

Property Aerial



Google

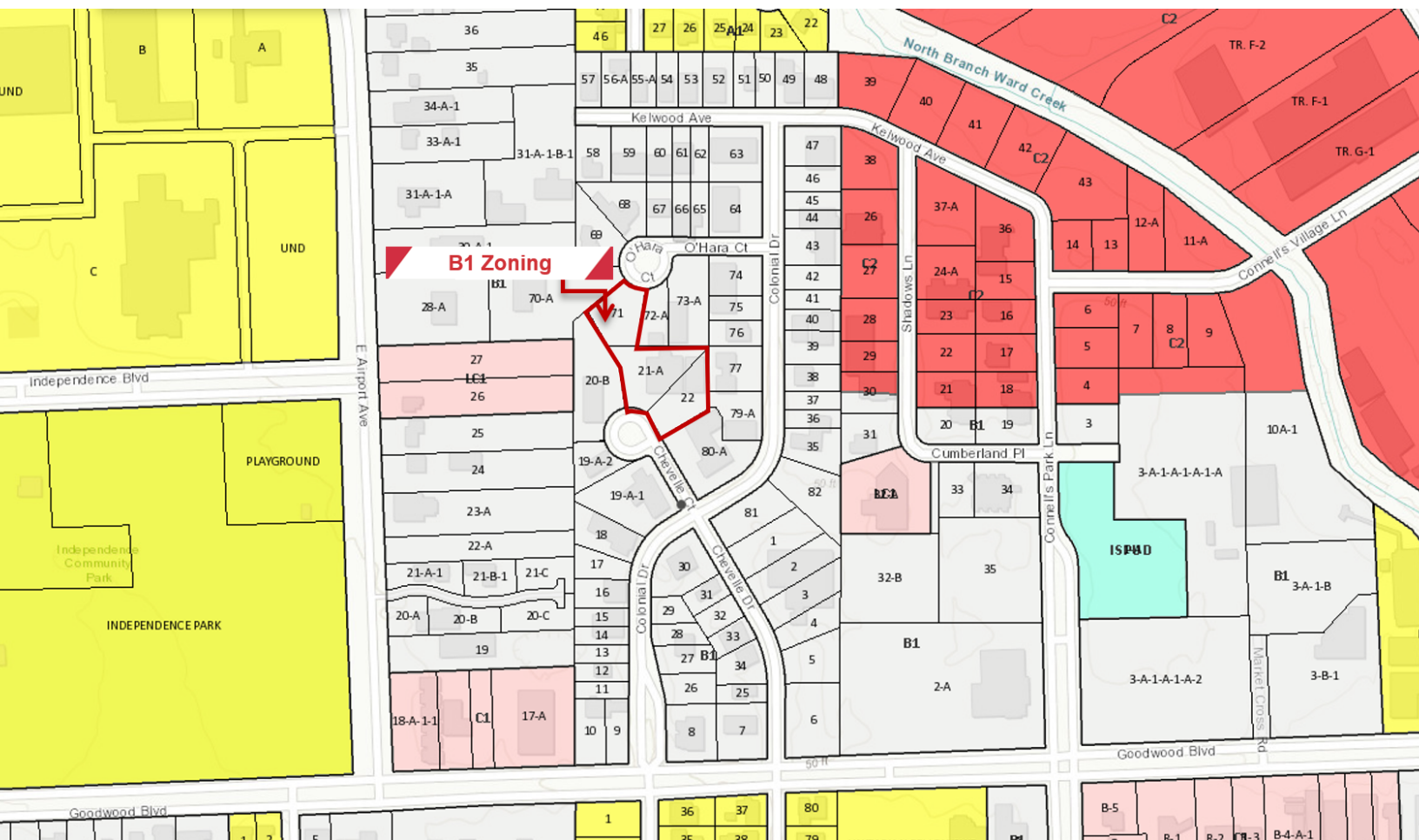
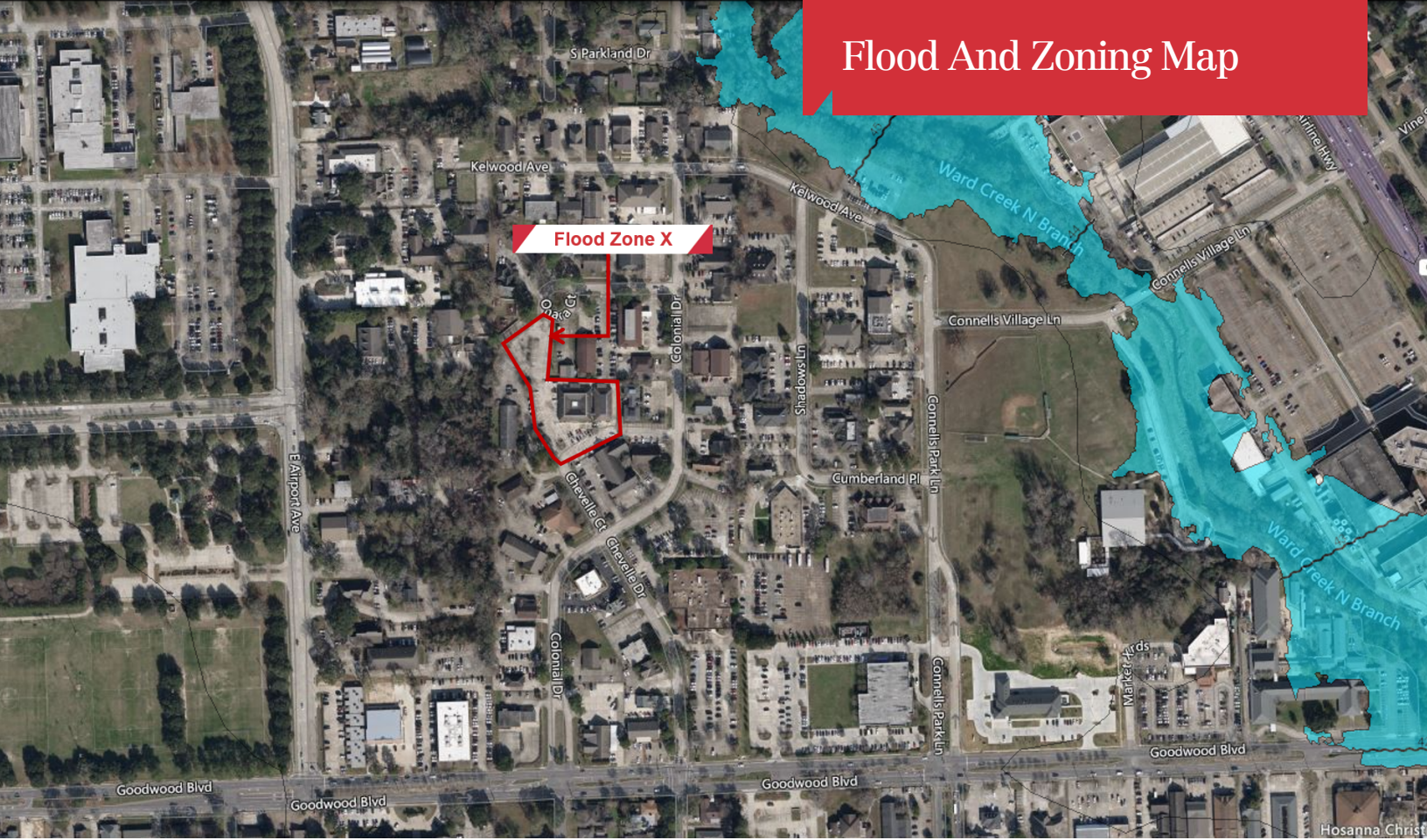
Map data ©2021 Imagery ©2021 , Maxar Technologies, U.S. Geological Survey



# Interior Photos

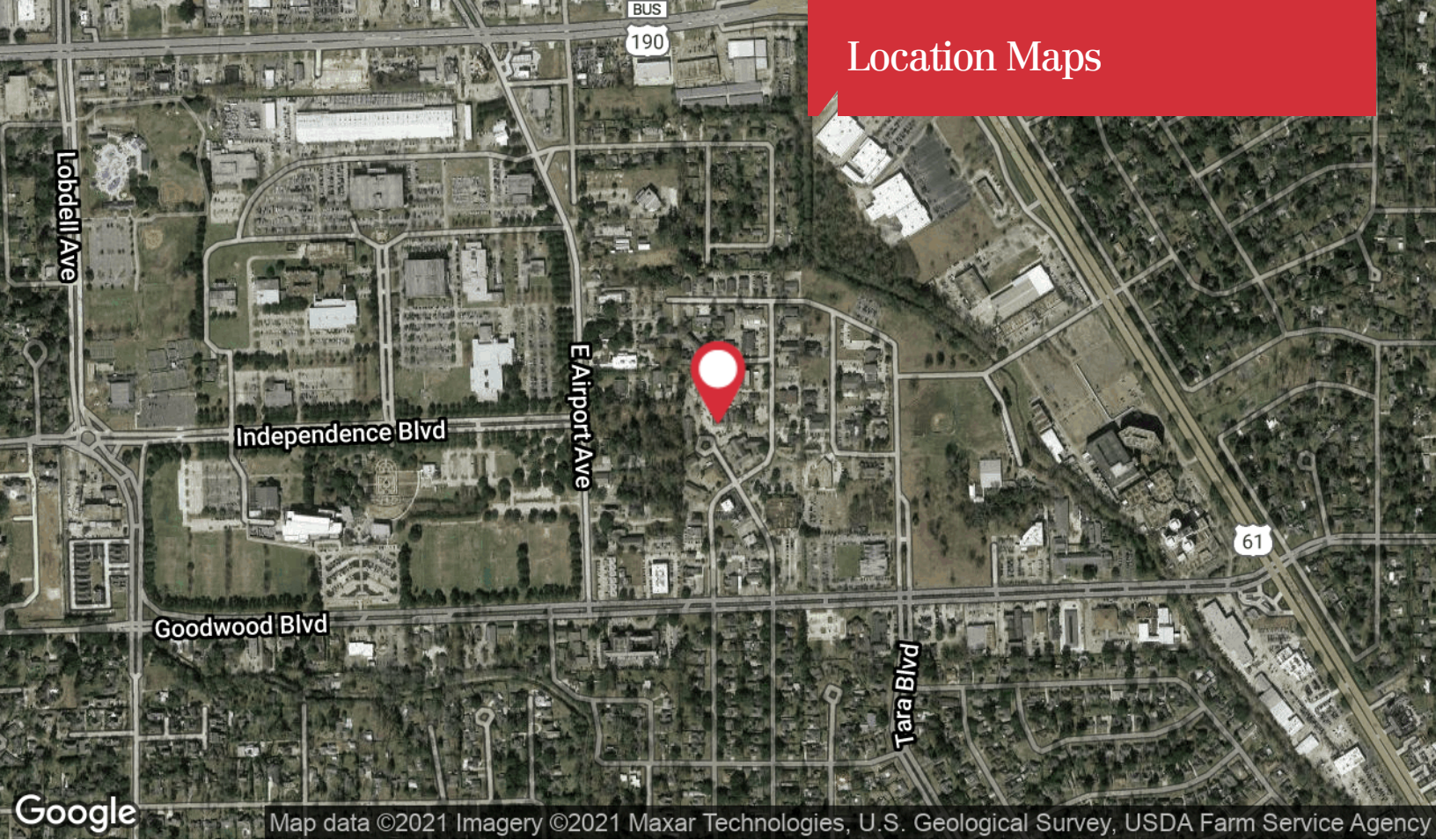


# Flood And Zoning Map



1700 City Farm Drive  
Baton Rouge, LA 70806  
225 295 0800 tel  
[latterblum.com](http://latterblum.com)

# Location Maps



Map data ©2021 Imagery ©2021 Maxar Technologies, U.S. Geological Survey, USDA Farm Service Agency



Map data ©2021