



Reiger Road

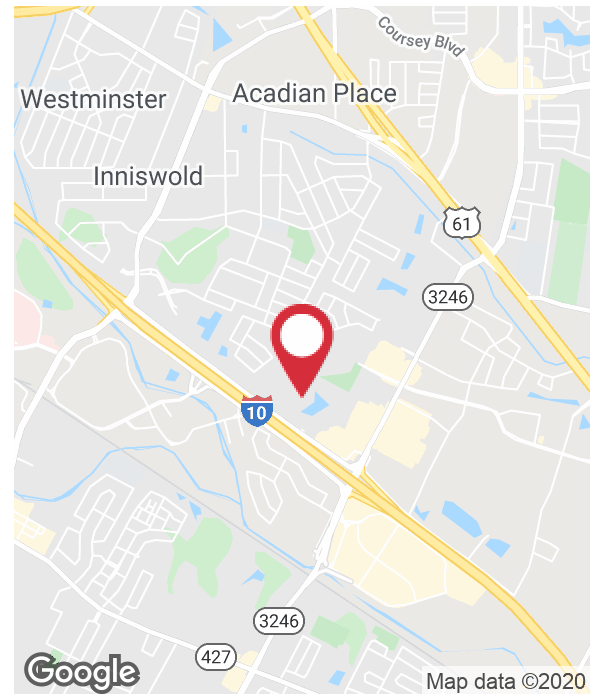
Baton Rouge, Louisiana 70809

Property Highlights

- Up To 45 Acres Available
- Will Subdivide
- Great I-10 frontage
- I-10 access road approved
- 126,862 Average Daily Traffic Count along I-10 (DOTD-2017)
- Zoned C2
- Two points of access provided by both Reitz Ave. and by N. Reiger Rd.

Sale Price

\$7.00 - 14.00 / SF



For more information

Ty Gose, SIOR, CCIM

O: 225 295 0800 | C: 225 297 7808
ty@latterblum.com

Tony Demarco, SIOR

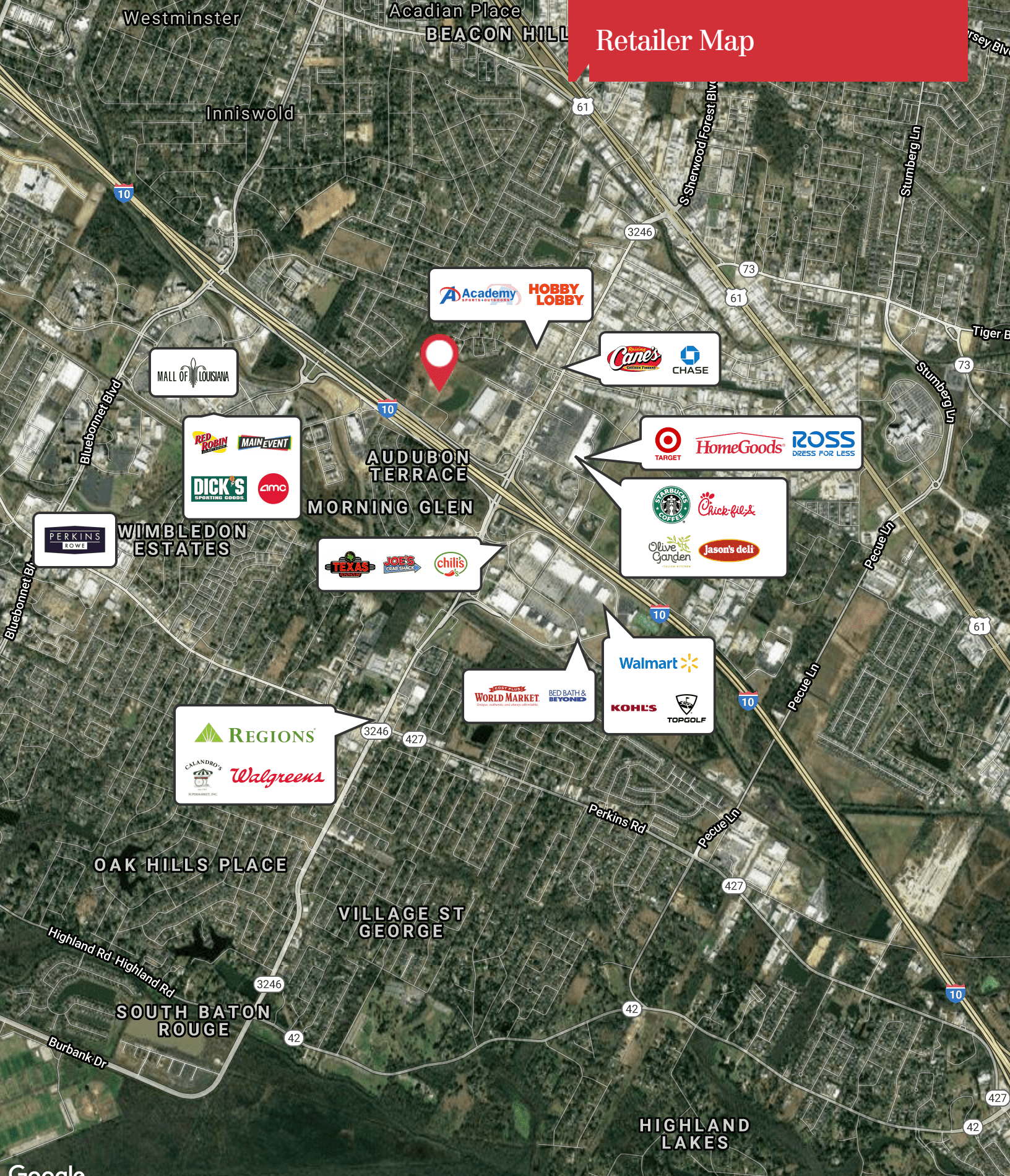
O: 225 297 7474 | C: 225 281 7474
tdemarco@latterblum.com

CALL OR EMAIL FOR MORE INFORMATION

NO WARRANTY OR REPRESENTATION, EXPRESS OR IMPLIED, IS MADE AS TO THE ACCURACY OF THE INFORMATION CONTAINED HEREIN, AND THE SAME IS SUBMITTED SUBJECT TO ERRORS, OMISSIONS, CHANGE OF PRICE, RENTAL OR OTHER CONDITIONS, PRIOR SALE, LEASE OR FINANCING, OR WITHDRAWAL WITHOUT NOTICE, AND OF ANY SPECIAL LISTING CONDITIONS IMPOSED BY OUR PRINCIPALS NO WARRANTIES OR REPRESENTATIONS ARE MADE AS TO THE CONDITION OF THE PROPERTY OR ANY HAZARDS CONTAINED THEREIN ARE ANY TO BE IMPLIED. LICENSED IN LOUISIANA.

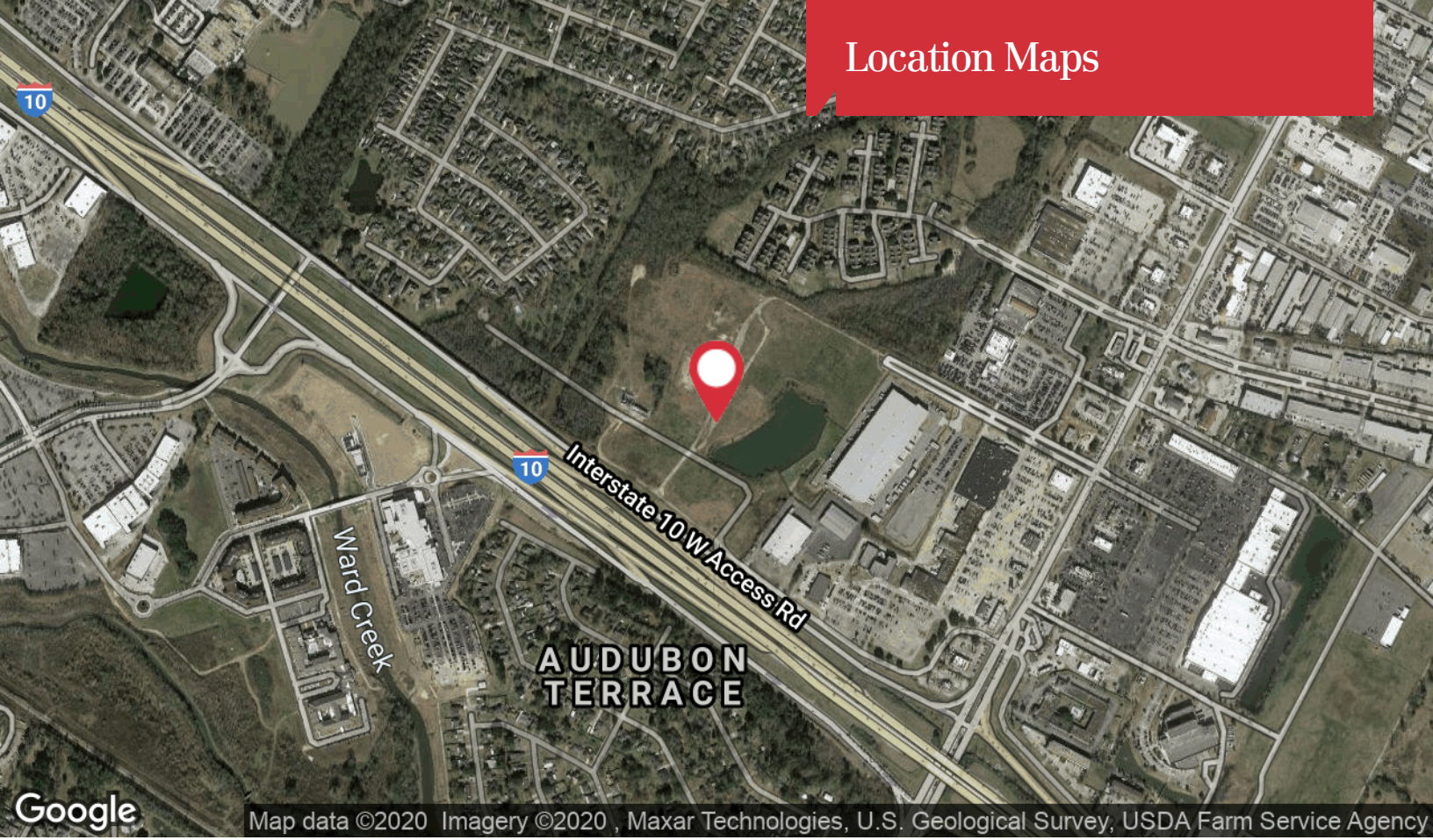
1700 City Farm Drive
Baton Rouge, LA 70806
225 295 0800 tel
latterblum.com

Retailer Map

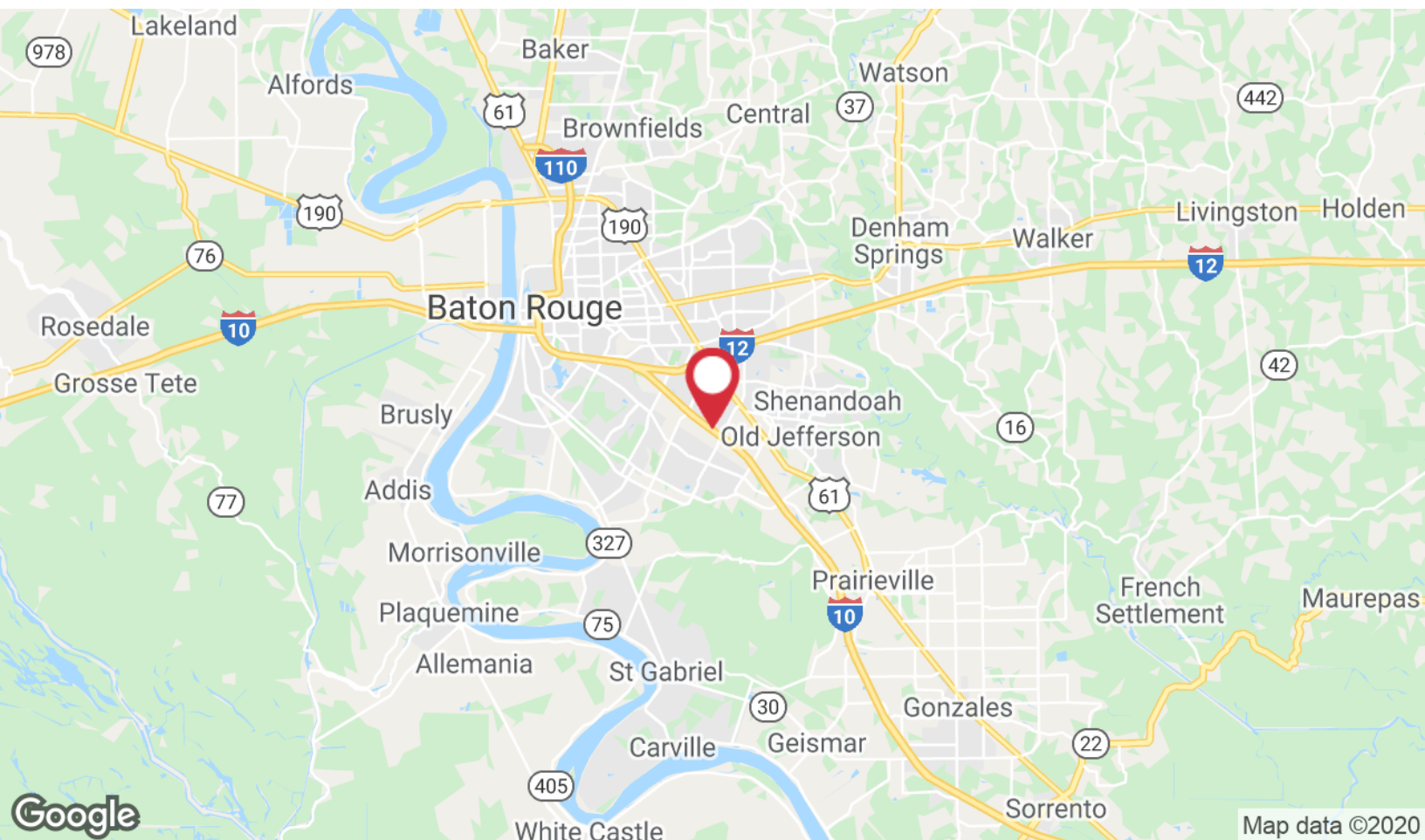


Google Map data ©2020 Imagery ©2020 , Landsat / Copernicus, Maxar Technologies, U.S. Geological Survey, USDA Farm Service Agency

Location Maps



Map data ©2020 Imagery ©2020, Maxar Technologies, U.S. Geological Survey, USDA Farm Service Agency



Map data ©2020



Tony Demarco, SIOR

Commercial Sales & Leasing

225.297.7474 tel
225.281.7474 cell
tdemarco@latterblum.com

Professional Background

Tony has been a top producing Associate Broker in Louisiana for over 45 years and bears the prestigious designation of SIOR. A long and successful track record continues due to Tony's success and expertise in industrial/commercial development, Mississippi River site selection and extensive knowledge of the lower Mississippi River delta. Tony's transactions are estimated in the hundreds of millions of dollars, and many of his sales include some of the largest transactions in Mississippi River history; current pending sales are in excess of \$100,000,000.

Tony's expertise is in working with international corporations and many Fortune 500 Companies which helps place him in the top 2% of Realtors in the United States. He has been recognized by the National Association of Realtors as "Realtor Emeritus" for having over 45 years of active real estate experience. He has provided real estate services for many large clients such as the State of Louisiana, the City Parish of Baton Rouge, Entergy Corp., Lyons Copolymer, South Louisiana Methanol, Shell Oil, Kasier Aluminum Chemical Company, Federal Bankruptcy Court, Ormet Aluminum, Fluor Enterprises, Sprint, Wingfoot, DaVita Healthcare, Kellogg Brown & Root, Arthur J. Gallagher, Golden Nugget, Mammoet, Peterbilt, Gexpro, and CB&I.

Education

Southeastern University
Heilids College of the Pacific

Memberships & Affiliations