



## Development Opportunity

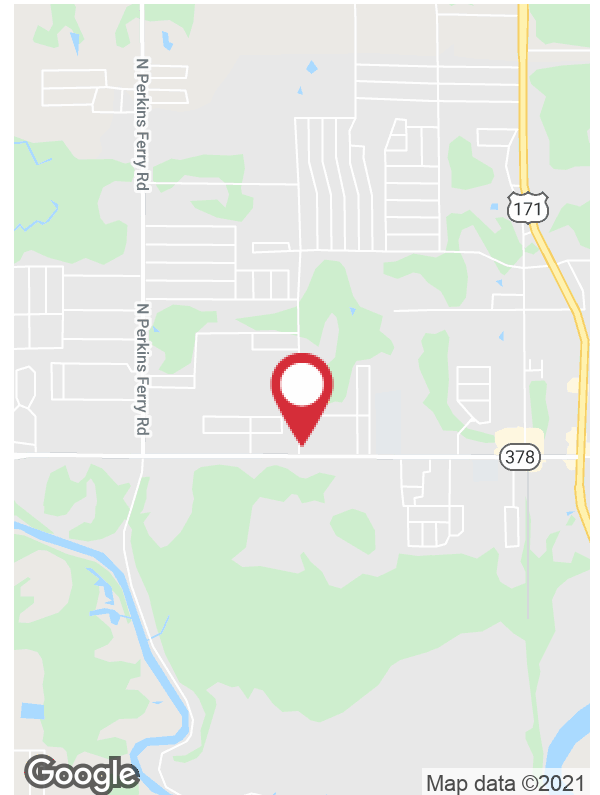
Sam Houston Jones Pkwy & Park Rd, Lake Charles, Louisiana

### Property Highlights

- Development opportunity in Moss Bluff
- ±1.3 acre (2 parcels) on the northeast corner of Sam Houston Jones Parkway and Park Road
- Site is located on a major thoroughfare in Moss Bluff -- near new Rouse's anchored shopping center
- Commercial (C3) and Residential (R2) zoning
- Each parcel has a different owner and can be sold separately
- Convenience store to be built on hard corner

### Sale Price

See Pricing Above



For more information

**Joel Davidson, CCIM**

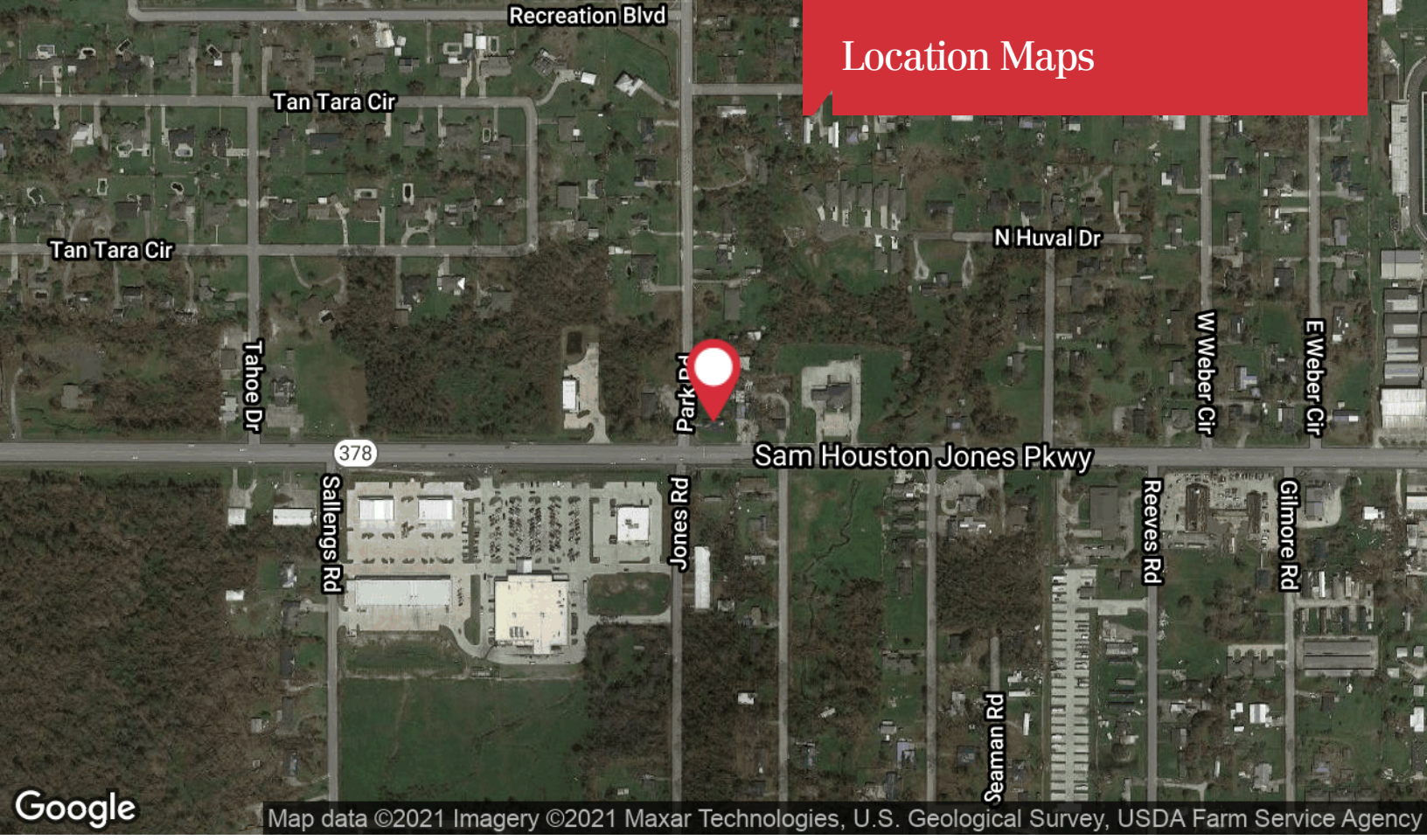
O: 337 310 7333 | C: 337 529 6710  
joeldavidson@latterblum.com

**CALL OR EMAIL FOR MORE INFORMATION**

NO WARRANTY OR REPRESENTATION, EXPRESS OR IMPLIED, IS MADE AS TO THE ACCURACY OF THE INFORMATION CONTAINED HEREIN, AND THE SAME IS SUBMITTED SUBJECT TO ERRORS, OMISSIONS, CHANGE OF PRICE, RENTAL OR OTHER CONDITIONS, PRIOR SALE, LEASE OR FINANCING, OR WITHDRAWAL WITHOUT NOTICE, AND OF ANY SPECIAL LISTING CONDITIONS IMPOSED BY OUR PRINCIPALS NO WARRANTIES OR REPRESENTATIONS ARE MADE AS TO THE CONDITION OF THE PROPERTY OR ANY HAZARDS CONTAINED THEREIN ARE ANY TO BE IMPLIED. LICENSED IN LOUISIANA.

1424 Ryan Street  
Lake Charles, LA 70601  
337 310 7333 tel  
[latterblum.com](http://latterblum.com)

# Location Maps



Map data ©2021 Imagery ©2021 Maxar Technologies, U.S. Geological Survey, USDA Farm Service Agency



Map data ©2021 Imagery ©2021 , Maxar Technologies, U.S. Geological Survey