



K-Mart Plaza

4070 Ryan Street, Lake Charles, Louisiana 70605

Property Highlights

- Grocery Anchored Shopping Center
- 9,000 - 104,333 SF Available
- Excellent Visibility on Major Thoroughfare
- Located Near McNeese State University Campus
- Tenants include Albertsons, Planet Fitness and Casa Ole

Available Spaces

Spaces	Size (SF)	Lease Rate
4070 Ryan St	±30,000	Contact Agent
4066 Ryan St	±18,000	Contact Agent
4050 Ryan St	±9,000	Contact Agent



CALL OR EMAIL FOR MORE INFORMATION

For more information

Joel Davidson, CCIM

O: 337 310 7333 | C: 337 529 6710
joeldavidson@latterblum.com

1424 Ryan Street
Lake Charles, LA 70601
337 310 7333 tel
latterblum.com

NO WARRANTY OR REPRESENTATION, EXPRESS OR IMPLIED, IS MADE AS TO THE ACCURACY OF THE INFORMATION CONTAINED HEREIN, AND THE SAME IS SUBMITTED SUBJECT TO ERRORS, OMISSIONS, CHANGE OF PRICE, RENTAL OR OTHER CONDITIONS, PRIOR SALE, LEASE OR FINANCING, OR WITHDRAWAL WITHOUT NOTICE, AND OF ANY SPECIAL LISTING CONDITIONS IMPOSED BY OUR PRINCIPALS NO WARRANTIES OR REPRESENTATIONS ARE MADE AS TO THE CONDITION OF THE PROPERTY OR ANY HAZARDS CONTAINED THEREIN ARE ANY TO BE IMPLIED. LICENSED IN LOUISIANA.

K-Mart Plaza | Lake Charles



Former K-Mart ($\pm 20,000$ - $\pm 104,333$ SF SF), Former Stage ($\pm 18,000$ SF) and Former Mattress Joe ($\pm 9,000$ SF)

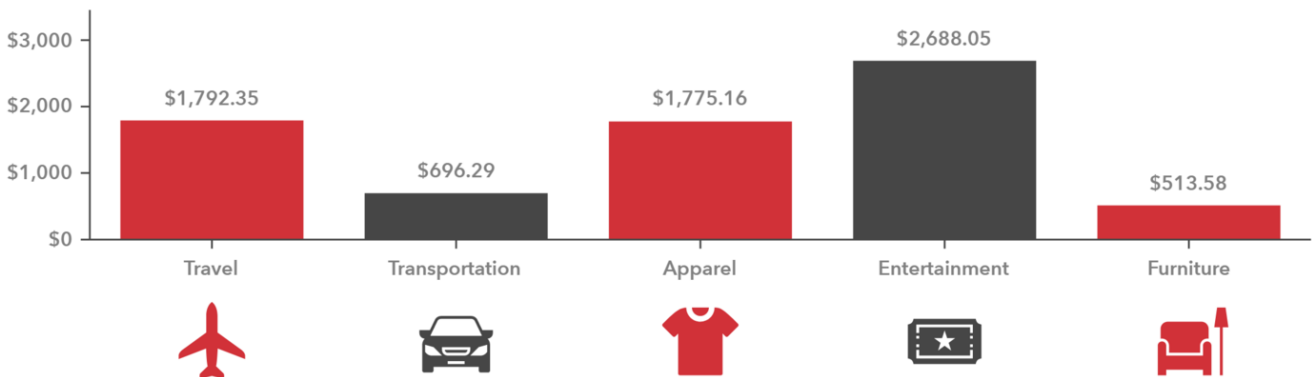
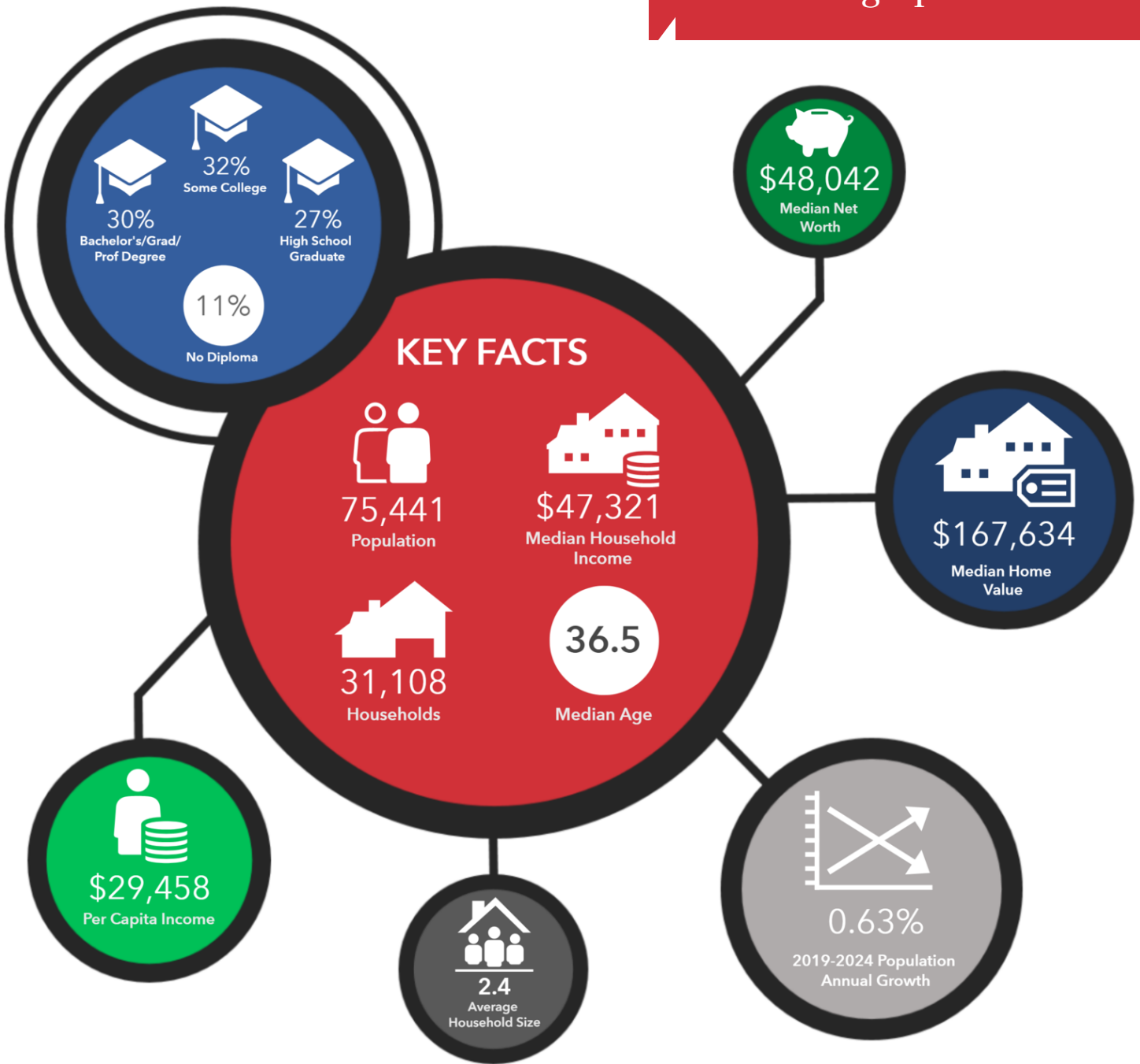


Former K-Mart Space ($\pm 20,000$ - $\pm 104,333$ SF Available)

Location Maps



1424 Ryan Street
Lake Charles, LA 70601
337 310 7333 tel
latterblum.com



*Spending facts are average annual dollars per household