



Mid City Shopping Center

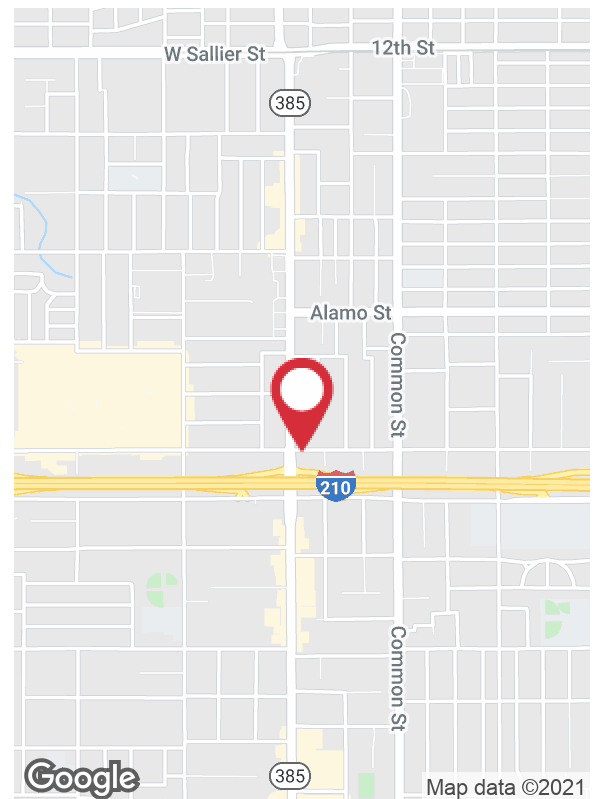
308 E Prien Lake Road, Lake Charles, Louisiana 70601

Property Highlights

- Lease space available in Mid City Shopping Center
- ±3,600 SF suite with frontage on Prien Lake Road -- a major thoroughfare in Lake Charles
- Large open space, 10' ceilings, LED lighting, kitchen area and two ADA restrooms
- Recently updated and remodeled inside and out
- Center has an additional 40 parking spaces on the east side of building
- Adjacent tenants include Morris Bar Law, US Agencies, OMV Express, Check Lenders and NRL Mortgage

Lease Rate

\$7,200.00 per month (MG)



For more information

Joel Davidson, CCIM

O: 337 310 7333 | C: 337 529 6710
joeldavidson@latterblum.com

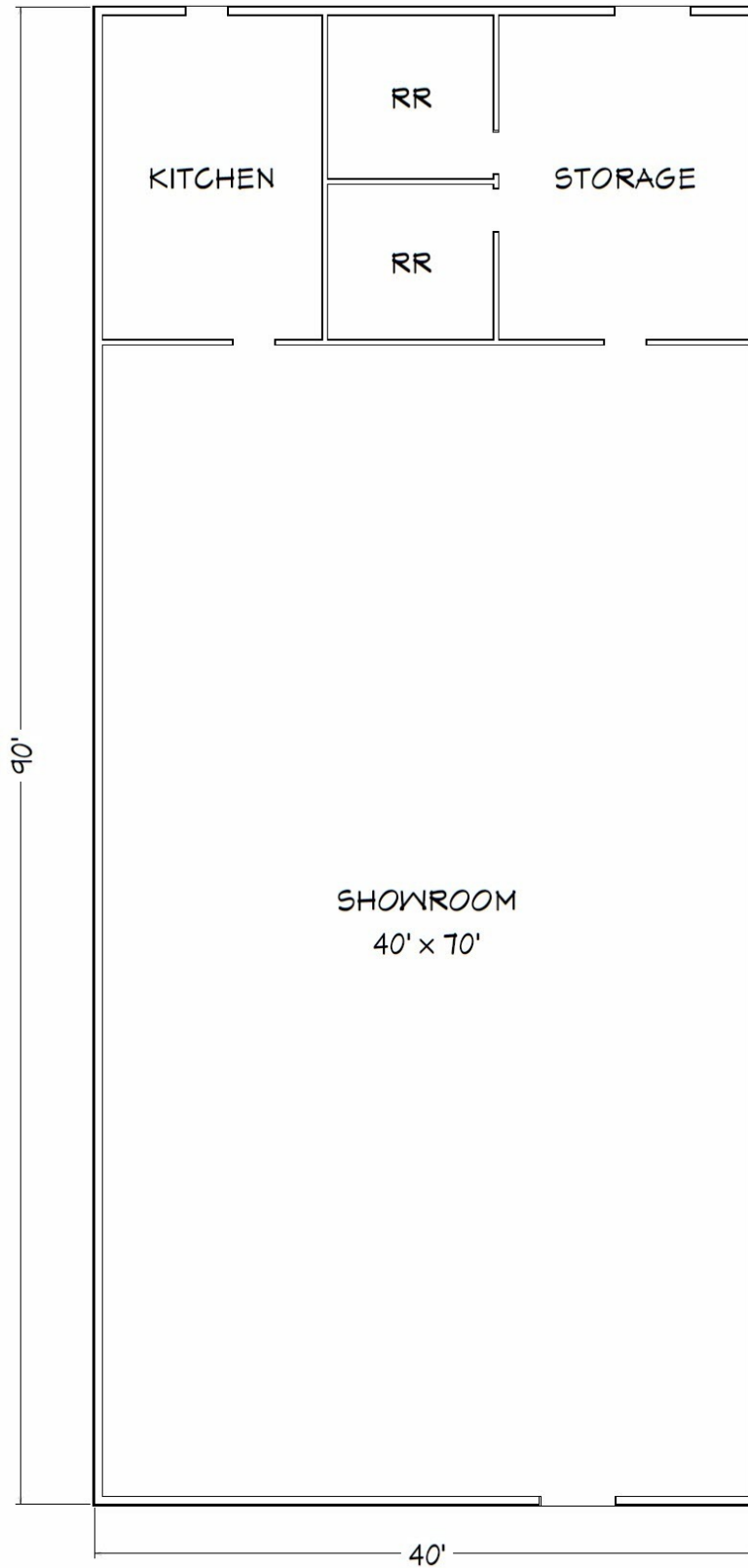
CALL OR EMAIL FOR MORE INFORMATION

NO WARRANTY OR REPRESENTATION, EXPRESS OR IMPLIED, IS MADE AS TO THE ACCURACY OF THE INFORMATION CONTAINED HEREIN, AND THE SAME IS SUBMITTED SUBJECT TO ERRORS, OMISSIONS, CHANGE OF PRICE, RENTAL OR OTHER CONDITIONS, PRIOR SALE, LEASE OR FINANCING, OR WITHDRAWAL WITHOUT NOTICE, AND OF ANY SPECIAL LISTING CONDITIONS IMPOSED BY OUR PRINCIPALS NO WARRANTIES OR REPRESENTATIONS ARE MADE AS TO THE CONDITION OF THE PROPERTY OR ANY HAZARDS CONTAINED THEREIN ARE ANY TO BE IMPLIED. LICENSED IN LOUISIANA.

810 W Bayou Pines Drive
Lake Charles, LA 70601
337 310 7333 tel
latterblum.com

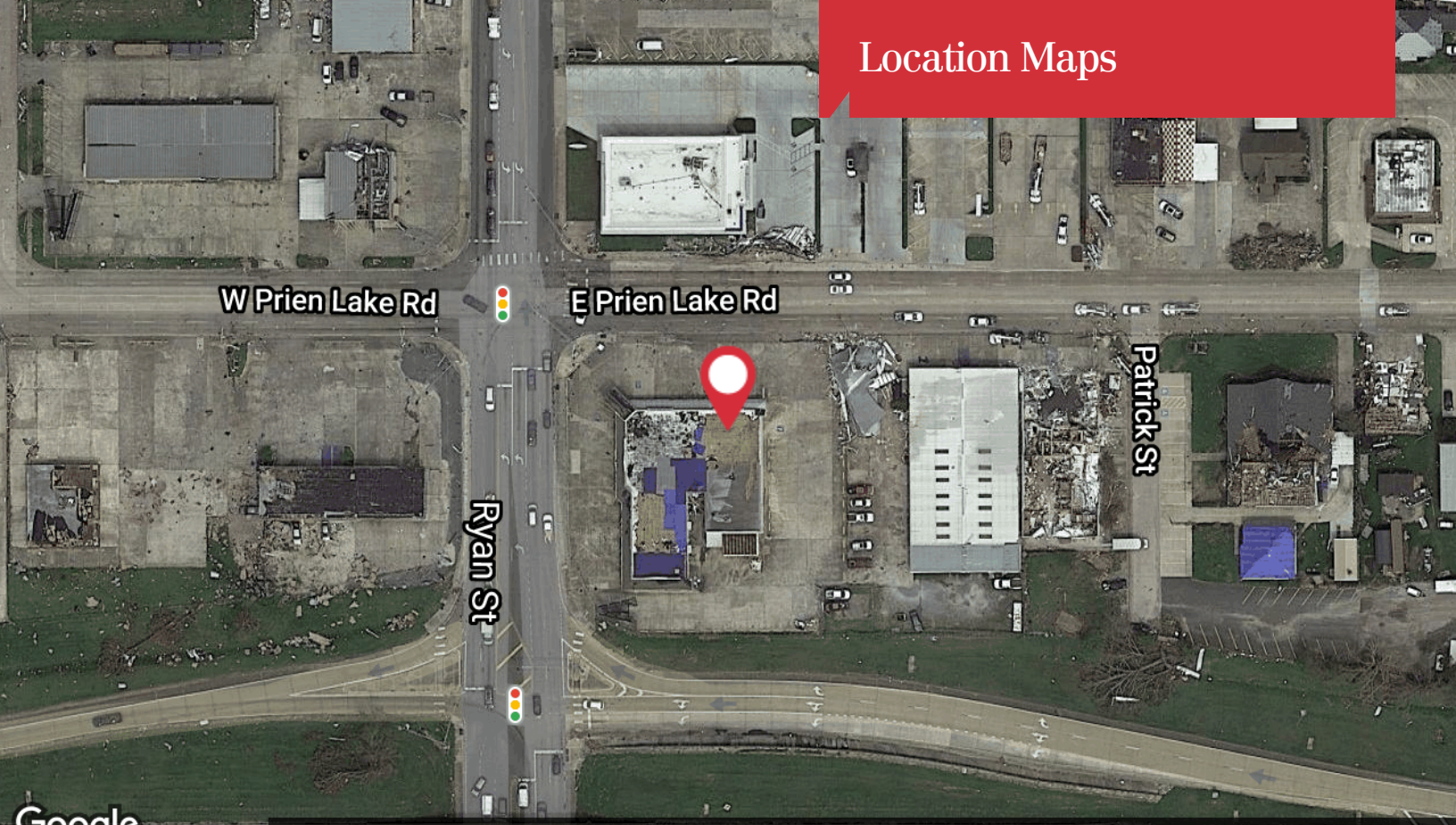
April 16, 2021

Property Floor Plan



FOR ILLUSTRATION PURPOSES ONLY, NOT TO SCALE

Location Maps



Map data ©2021 Imagery ©2021 Maxar Technologies, U.S. Geological Survey, USDA Farm Service Agency



Map data ©2021

810 W Bayou Pines Drive
Lake Charles, LA 70601
337 310 7333 tel
latterblum.com