



Melrose Office/Warehouse

6635 & 6627 Harry Dr, Baton Rouge, Louisiana 70806

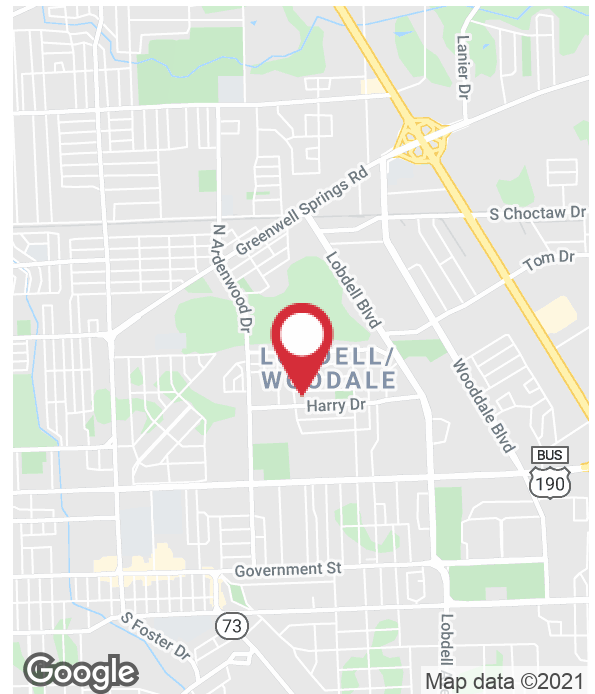
Property Highlights

- 2 Office/Warehouses (±2,200 SF each) (800 Off.) (1,400 WH)
- 12x10 Roll-Up Door (2)
- 13' Clear Height
- <1 Mile to Florida Blvd and <3 miles from Newly Announced Amazon Fulfillment Center
- Gated with Fenced Yard
- 6635 Is Newly Renovated and Serves as Commercial Leasing Facility
- 6627 is in Rough Shape and Would Need Work

Sale Price

\$210,000

\$47.73 / SF



For more information

Alex McCollam

O: 225 295 0800 | C: 832 584 9162
alexm@latterblum.com

Chris Gremillion, CCIM

O: 225 297 7445 | C: 225 270 5095
cgremillion@latterblum.com

CALL OR EMAIL FOR MORE INFORMATION

NO WARRANTY OR REPRESENTATION, EXPRESS OR IMPLIED, IS MADE AS TO THE ACCURACY OF THE INFORMATION CONTAINED HEREIN, AND THE SAME IS SUBMITTED SUBJECT TO ERRORS, OMISSIONS, CHANGE OF PRICE, RENTAL OR OTHER CONDITIONS, PRIOR SALE, LEASE OR FINANCING, OR WITHDRAWAL WITHOUT NOTICE, AND OF ANY SPECIAL LISTING CONDITIONS IMPOSED BY OUR PRINCIPALS NO WARRANTIES OR REPRESENTATIONS ARE MADE AS TO THE CONDITION OF THE PROPERTY OR ANY HAZARDS CONTAINED THEREIN ARE ANY TO BE IMPLIED. LICENSED IN LOUISIANA.

1700 City Farm Drive
Baton Rouge, LA 70806
225 295 0800 tel
latterblum.com

April 14, 2021

Exterior Photos

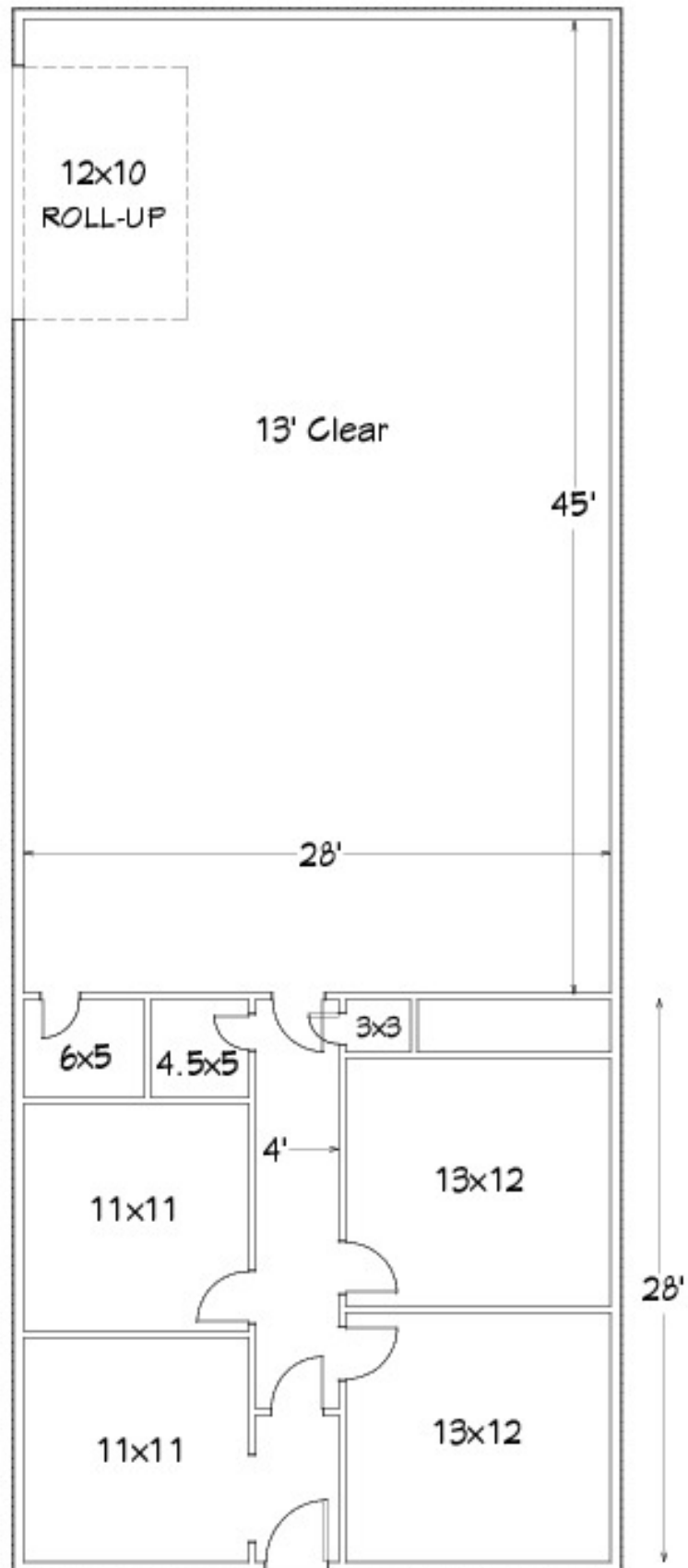


Exterior Photos



Interior Photos





Location Maps

