

Medical/Professional Space for Lease at Touro Medical Office Building

3525 Prytania St, New Orleans, LA 70115



Listing ID: 30599334
Status: Active
Property Type: Office For Lease
Office Type: Medical, Office Building
Contiguous Space: 777 SF
Total Available: 777 SF
Lease Rate: \$2,200 (Monthly)
Unit Price: \$33.98 PSF (Annual)
Base Monthly Rent: \$2,200
Lease Type: Modified Gross



Overview/Comments

Medical/Professional Office Condo for Lease located on the third floor of the Touro Medical Office Building/Chase Building across the street from Touro Infirmary

Great location conveniently located on the corner of Prytania and Foucher Streets with access from Prytania Street and is one block off of St. Charles Avenue.

One block off the street car line.

Located on third floor with garage access and is the only floor in building that has ramp/breezeway access to Touro Hospital

Monthly condo fee included in monthly rental amount includes janitorial services and utilities (tenant pays internet/phone/cable)

Approximately 777 SF

Space consists of 6 rooms of which 1 room is a bathroom; Current configuration consists of: 3 offices, a handicapped accessible bathroom, waiting room & staff room

Adjacent garage parking spaces may be leased and paid for by tenant

Great for medical, healthcare, professional offices, etc...

One year lease minimum

Deposit plus one months rent due at lease signing

Call or text agent at 504-722-7060 for further info or to view

Co-Owner Agent: non agent co-owner may also show the space

More Information Online

<https://latterblum.catylist.com//listing/30599334>

QR Code

Scan this image with your mobile device:



General Information

Tax ID/APN: 41045755
Office Type: Medical, Office Building
Building Name: Touro Medical Office Building

Available Space

Suite/Unit Number:	319	Space Type:	Relet
Space Available:	777 SF	Date Available:	04/01/2021
Minimum Divisible:	777 SF	Lease Rate:	\$2,200 (Monthly)
Maximum Contiguous:	777 SF		

Lease Type: Modified Gross
Parking Spaces: 0

Building Related

Parking Type: Structure Passenger Elevators: 0
Parking Description: Attached parking garage with 3rd floor access Freight Elevators: 0

Location

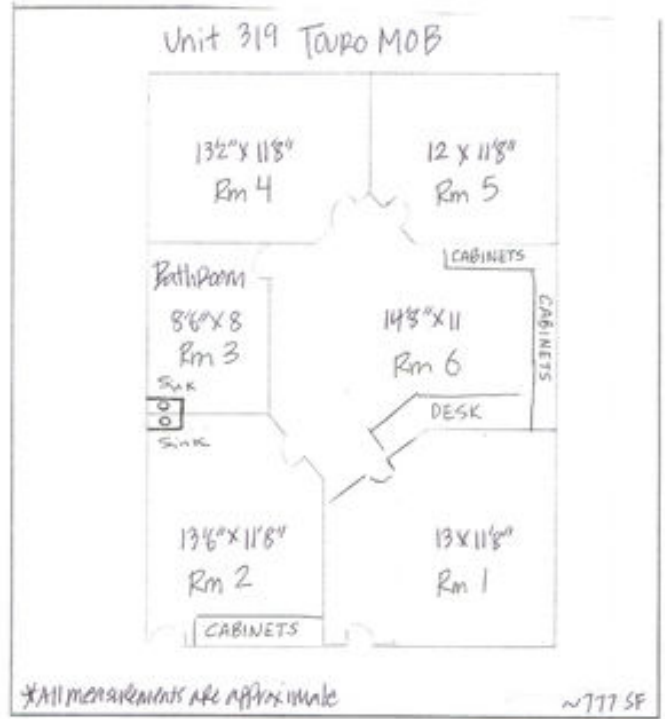
Address: 3525 Prytania St, New Orleans, LA 70115 MSA: New Orleans-Metairie
County: Orleans Submarket: Uptown-Garden District



Property Images



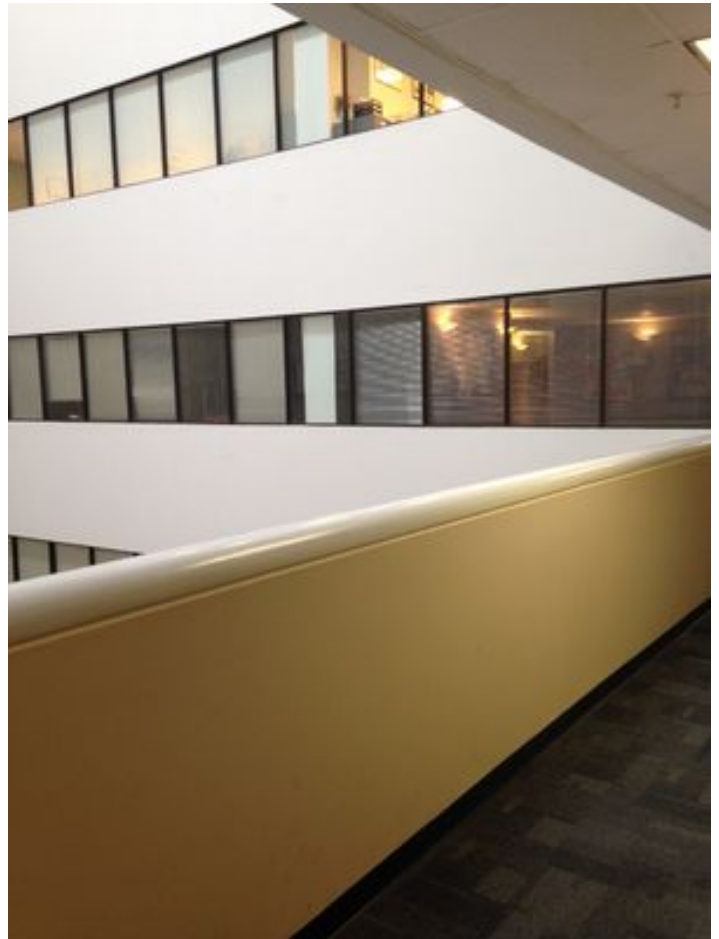
Atrium



3525 Prytania 319 Floorplan



Exterior hall 1



Exterior hall 2



image5

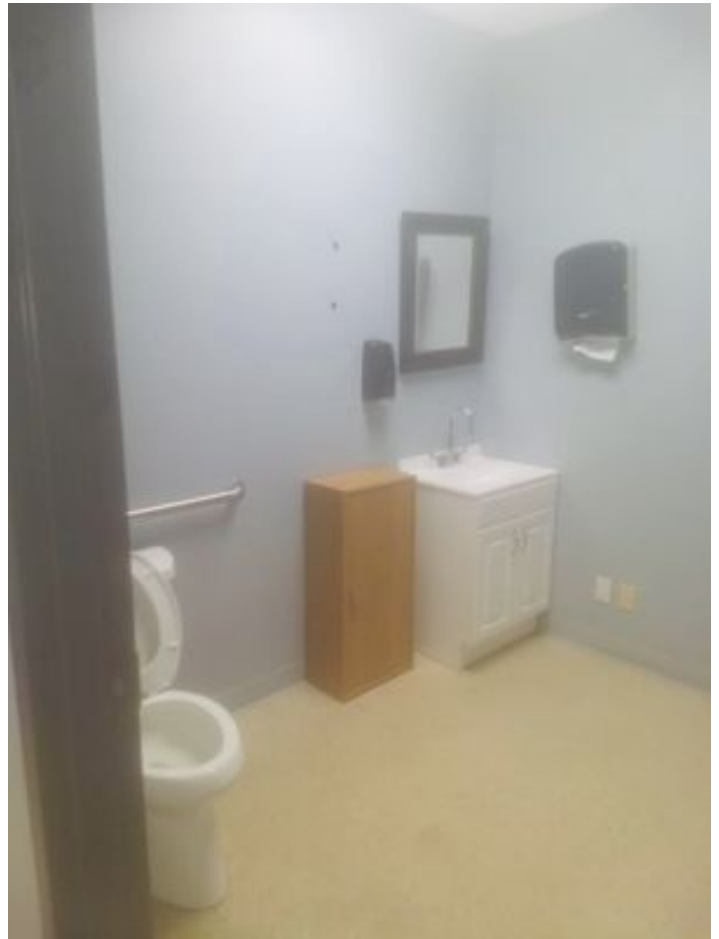


image0



image1

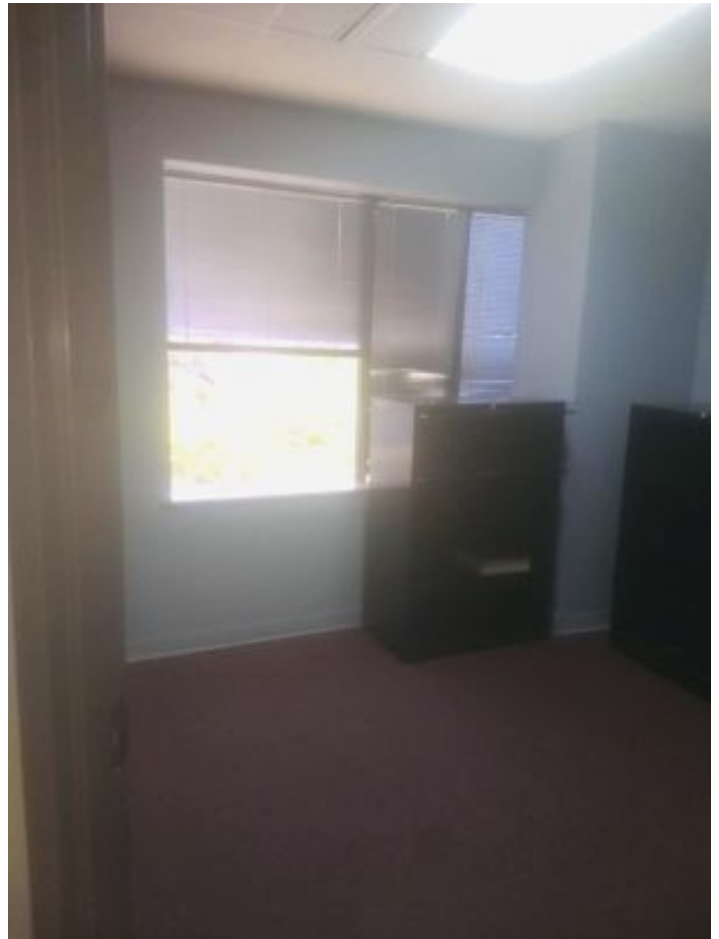


image2



image3

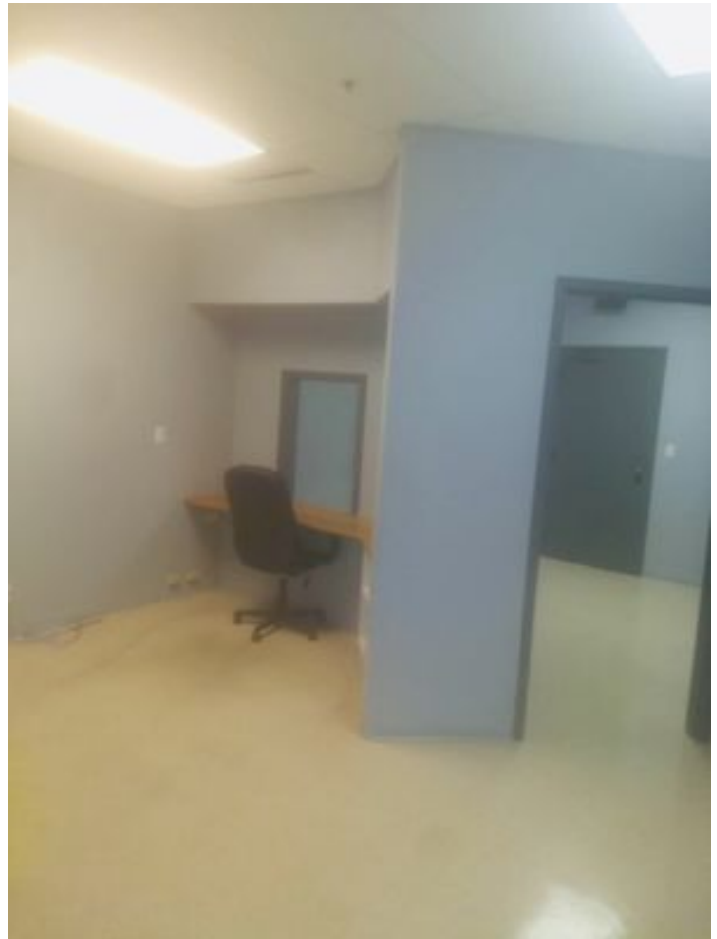


image4



Street View

Property Contacts

Kim Trosclair

Latter & Blum Inc Algiers

504-362-1823 [0]

kmtrosclair3@gmail.com

