



Medical Office Space

501 Dr. Michael DeBakey Drive, Lake Charles, Louisiana 70601

Property Highlights

- Medical office space available near Christus Oschner St. Patrick Hospital
- 2nd floor space is ±2,875 SF and 3rd floor space is ±5,410 SF
- Located along one of the area's primary medical corridors
- Build-out allowance up to \$10 PSF (landlord to approve all modifications)
- Common areas and building systems currently undergoing renovations

Available Spaces

Spaces	Lease Rate	Size (SF)
2nd Floor	\$24.00 SF/yr	2,875
3rd Floor	\$24.00 SF/yr	5,410
4th Floor	\$24.00 SF/yr	1,618



For more information

Matt Redd, CCIM, SIOR, CRE

O: 337 310 7333 x206 | C: 337 489 9666
mattredd@reddproperties.com

CALL OR EMAIL FOR MORE INFORMATION

NO WARRANTY OR REPRESENTATION, EXPRESS OR IMPLIED, IS MADE AS TO THE ACCURACY OF THE INFORMATION CONTAINED HEREIN, AND THE SAME IS SUBMITTED SUBJECT TO ERRORS, OMISSIONS, CHANGE OF PRICE, RENTAL OR OTHER CONDITIONS, PRIOR SALE, LEASE OR FINANCING, OR WITHDRAWAL WITHOUT NOTICE, AND OF ANY SPECIAL LISTING CONDITIONS IMPOSED BY OUR PRINCIPALS NO WARRANTIES OR REPRESENTATIONS ARE MADE AS TO THE CONDITION OF THE PROPERTY OR ANY HAZARDS CONTAINED THEREIN ARE ANY TO BE IMPLIED. LICENSED IN LOUISIANA.

810 W Bayou Pines Drive
Lake Charles, LA 70601
337 310 7333 tel
latterblum.com

April 26, 2021

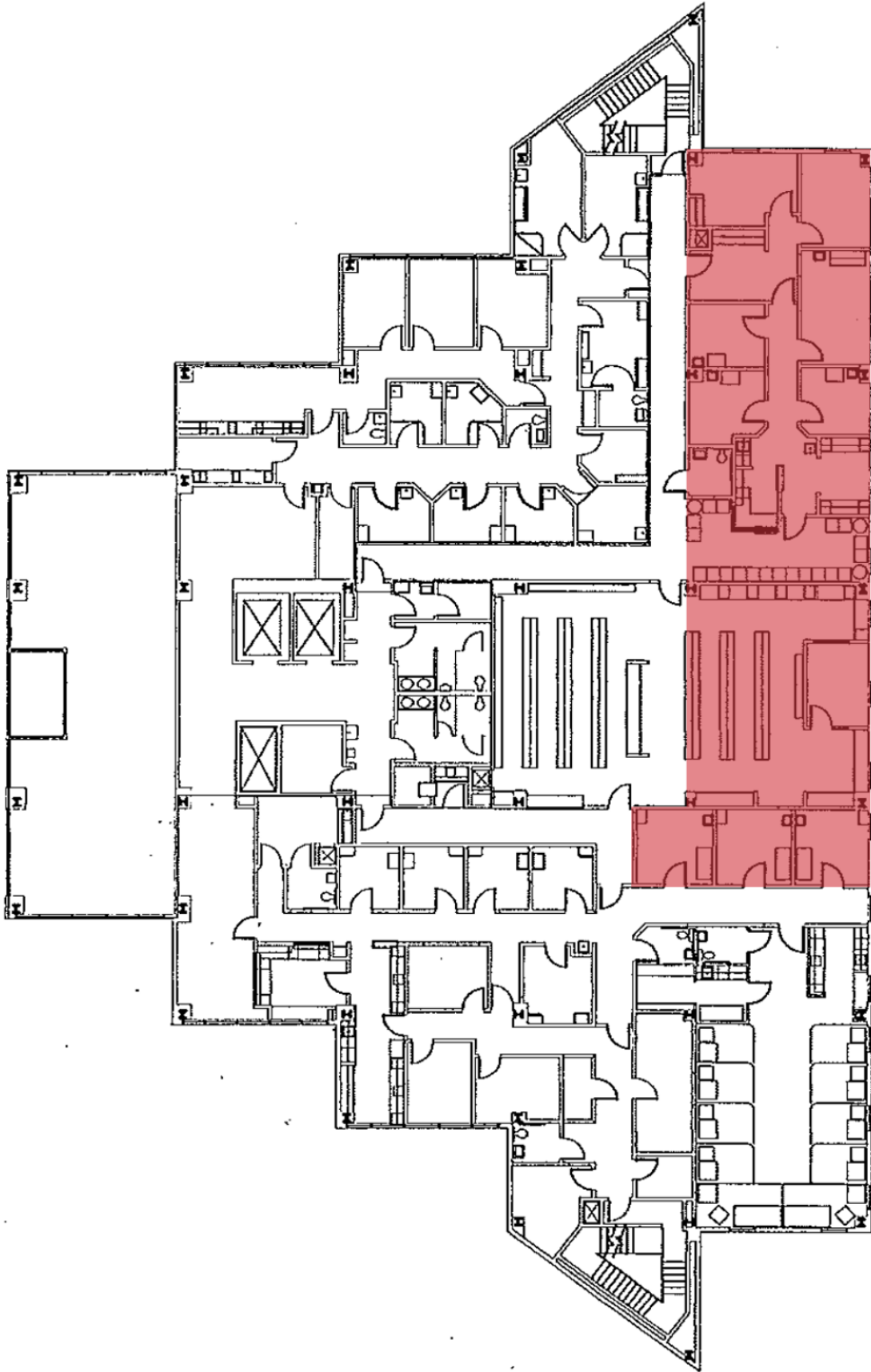
Additional Photos

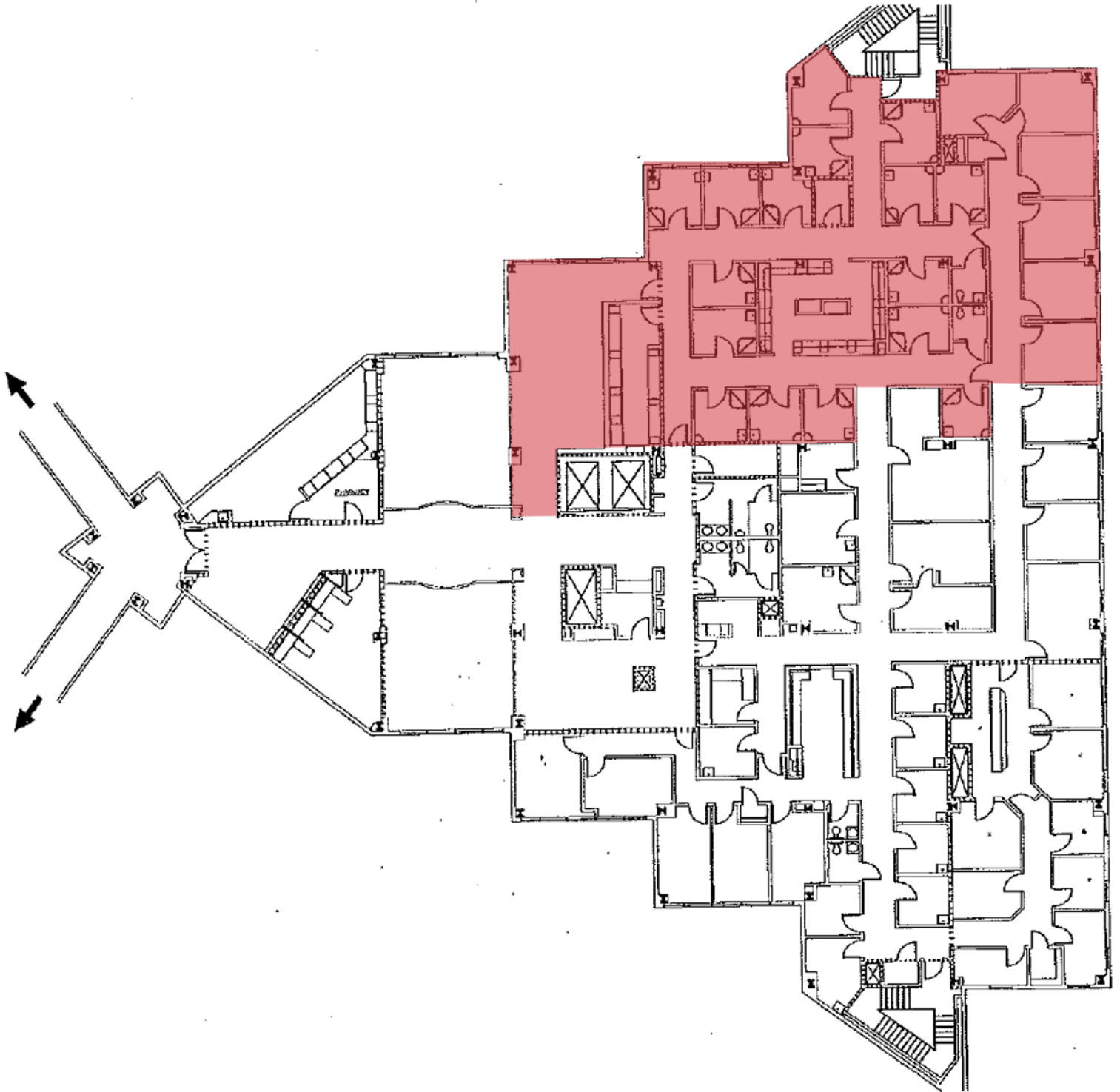


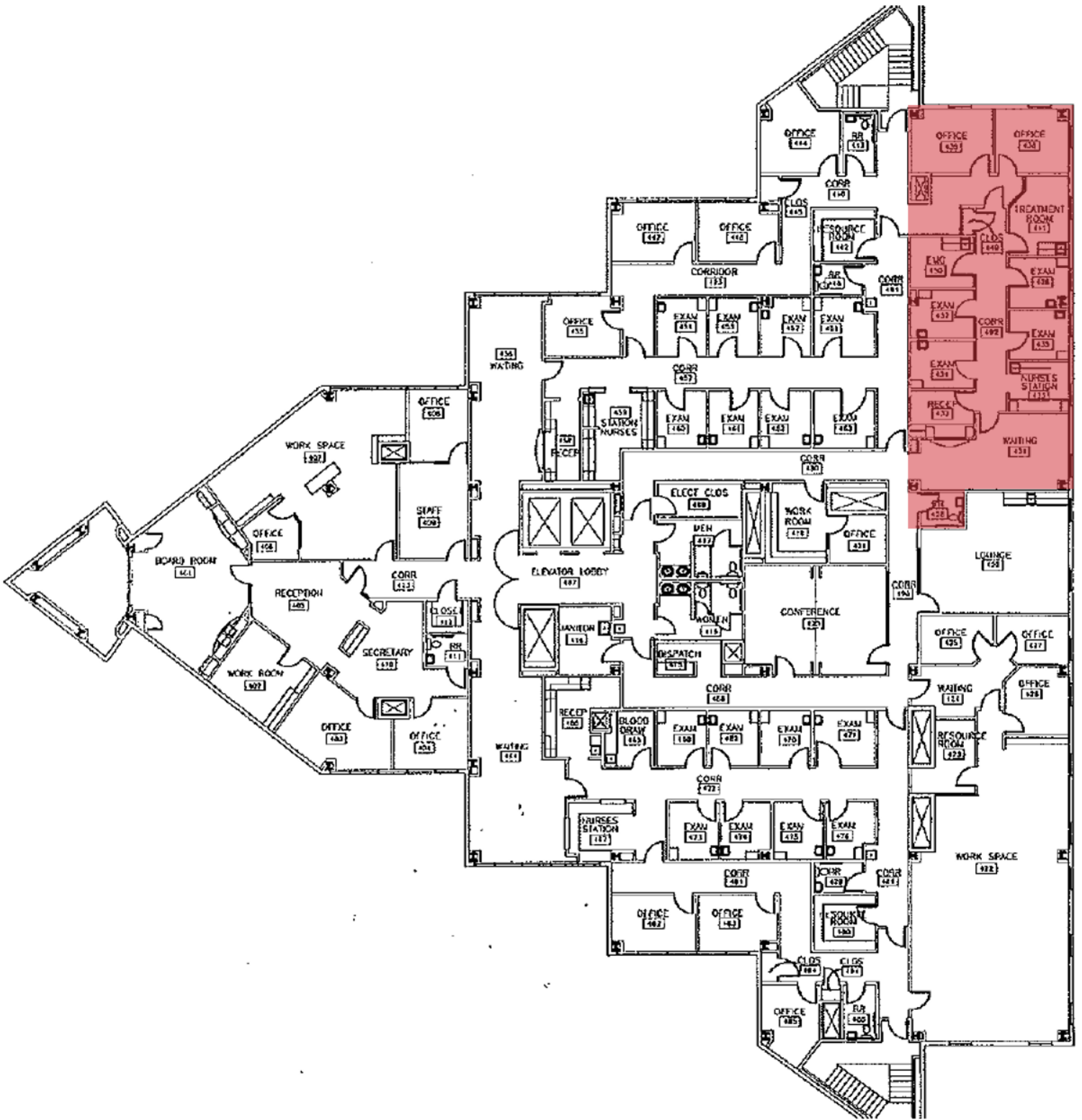
810 W Bayou Pines Drive
Lake Charles, LA 70601
337 310 7333 tel
latterblum.com

Additional Photos

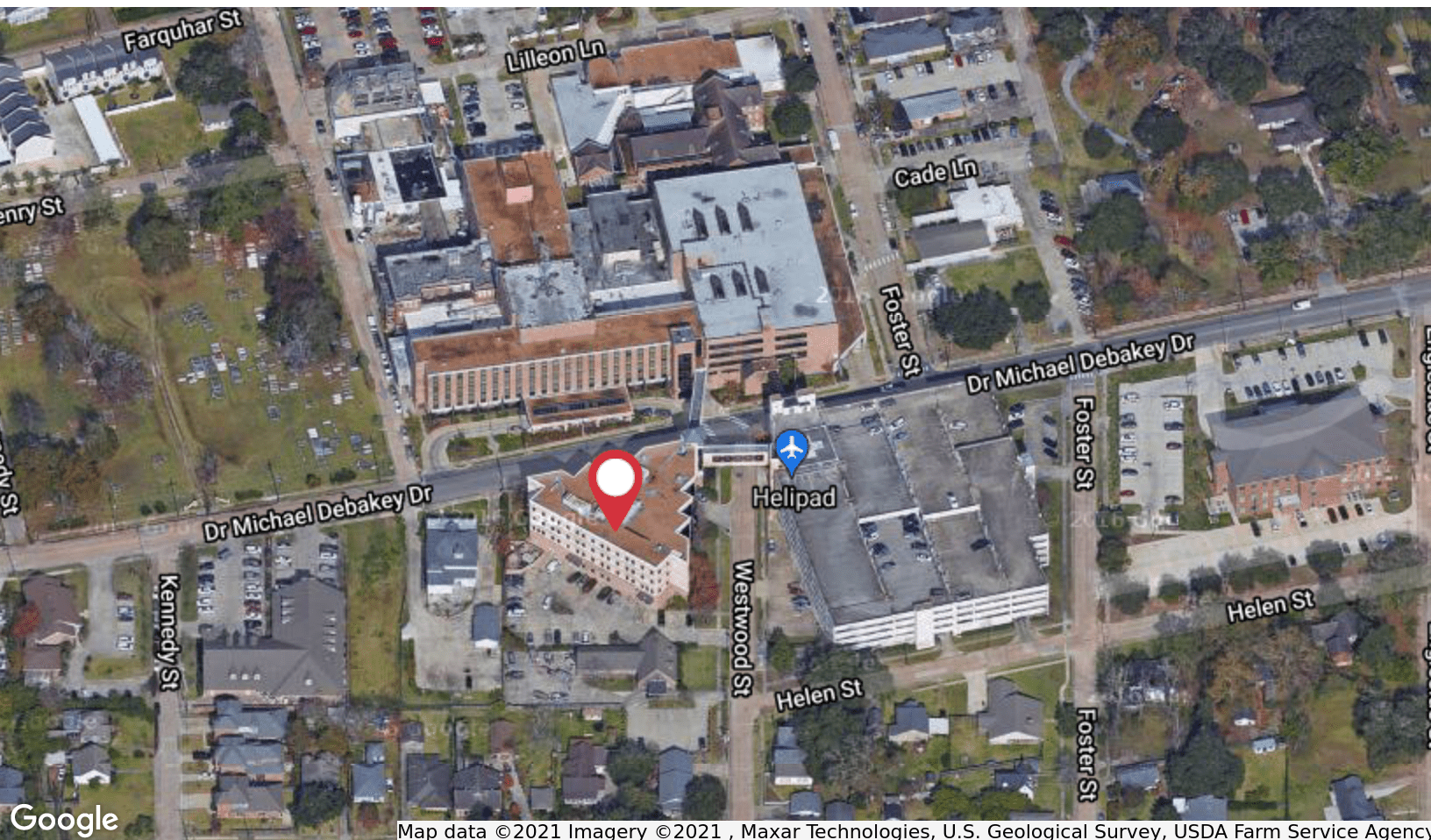








Location Maps



810 W Bayou Pines Drive
Lake Charles, LA 70601
337 310 7333 tel
latterblum.com