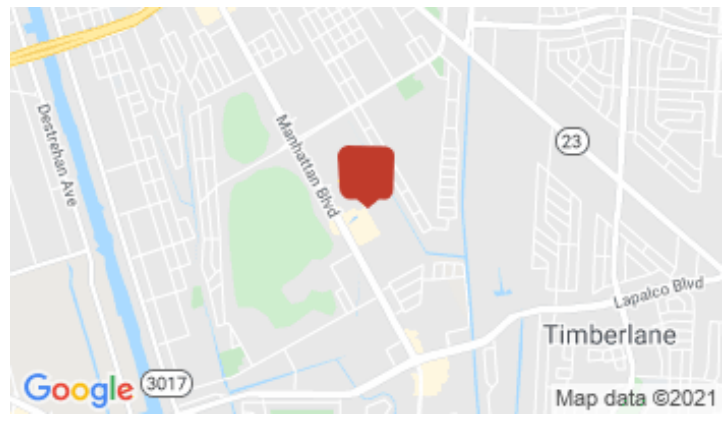
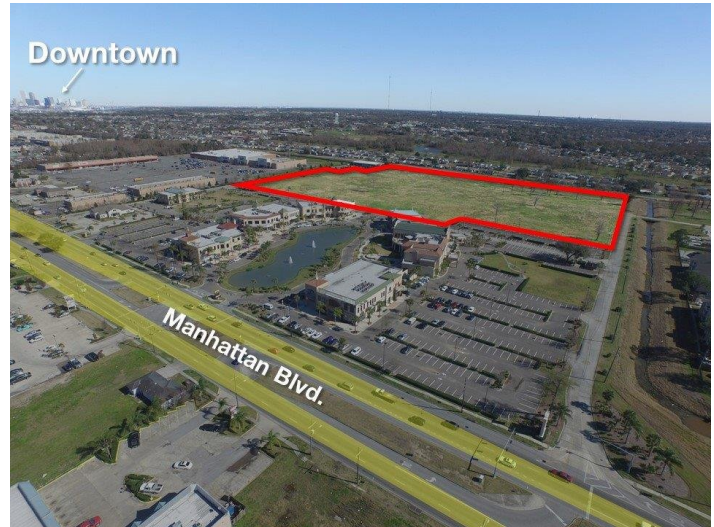


Manhattan Blvd. In-fill Development Tract

1901 Manhattan Blvd, Harvey, LA 70058



Listing ID: 30704107
Status: Active
Property Type: Vacant Land For Sale
Possible Uses: Multi-Family, Office
Gross Land Area: 20.86 Acres
Sale Price: \$15 PSF
Unit Price: \$15 PSF
Sale Terms: Cash to Seller
Nearest MSA: New Orleans-Metairie
County: Jefferson
Tax ID/APN: 3108888
Zoning: MUCD



Overview/Comments

The Subject Property is one of the scarce development tracts of substantial size available along Manhattan Blvd, the Westbank's premier commercial corridor where many National/Regional Credit Tenants are located.

This site is located directly behind Fountain Park Centre a 144,000 SF Mediterranean Style Lifestyle Center, and, is adjacent to a future 360 Unit Class "A" Apartment Community "Waters at Manhattan" (Under Construction).

With a short drive from Downtown New Orleans, the trade area attracts shoppers from the city core given the limited concentration of retailers.

Manhattan Blvd's traffic count is approximately 46,200 vehicles per day, and, FPC benefits greatly from its signalized entry/exit allowing easy ingress and egress.

More Information Online

<https://latterblum.catylist.com//listing/30704107>

QR Code

Scan this image with your mobile device:



Property Contacts



Ryan Pearce

NAI/Latter & Blum Commercial New Orleans
504-525-1311 [0]
rpearce@latterblum.com



Paul G Richard

NAI/Latter & Blum Commercial New Orleans
504-525-1311 [0]
prichard@latterblum.com