



4451 Bluebonnet Blvd

Baton Rouge, Louisiana 70810

Property Highlights

- Class A office space on Bluebonnet near Jefferson Highway
- Suite C - 2,000 SF current layout works well for medical office or similar use. Landlord will give substantial TI with long-term lease to reconfigure space
- Suite F - 1,900 SF professional office space can be combined with Suite G
- Walking distance to Izzos, CVS, Pizza Hut, Subway, The Cove Hawaiian Grill, and various other restaurants

Lease Rate

\$20.00 SF/yr (MG)

CALL OR EMAIL FOR MORE INFORMATION



For more information

Ty Gose, SIOR, CCIM

O: 225 295 0800 | C: 225 297 7808
ty@latterblum.com

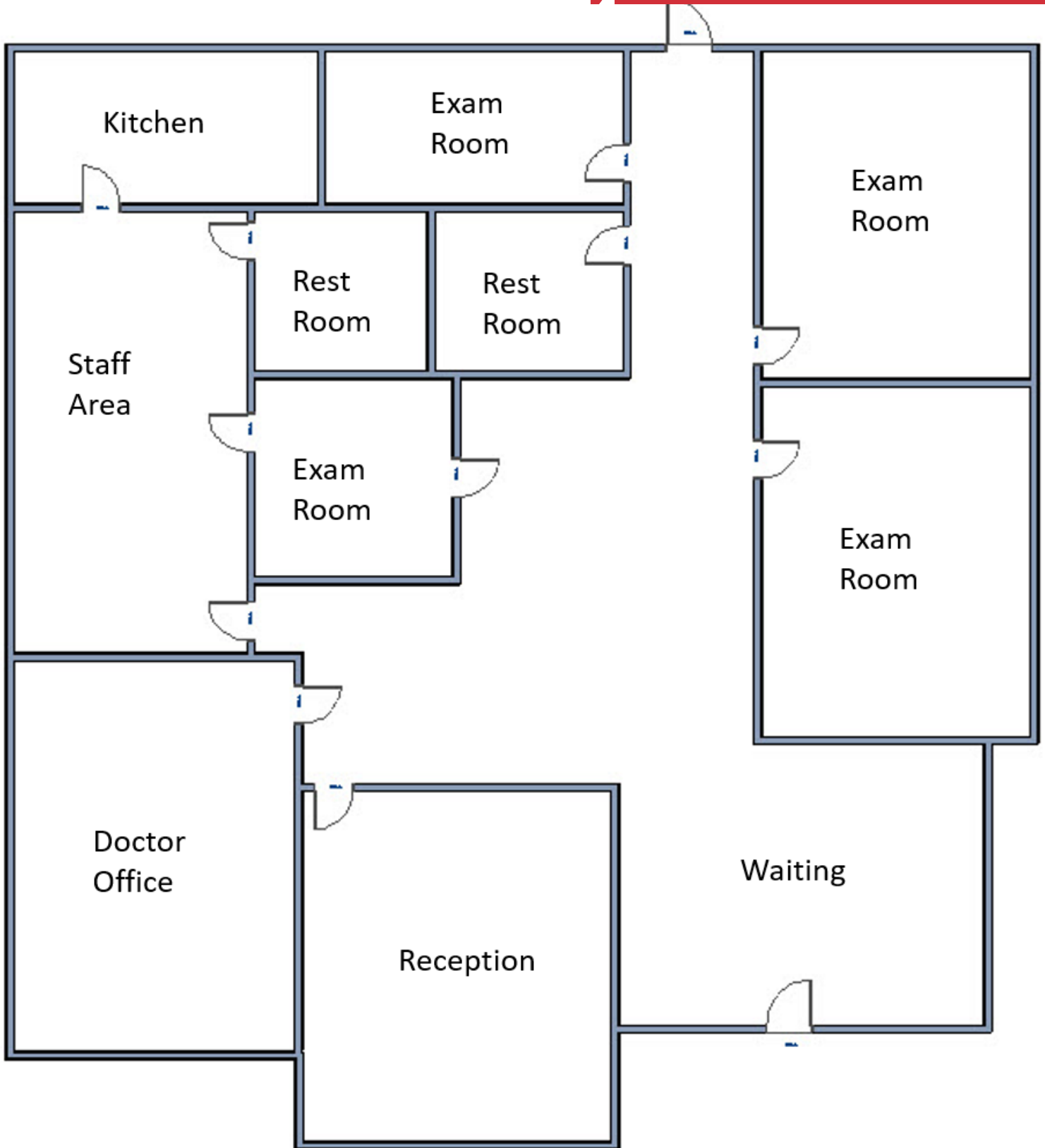
Michael Cashio, CCIM

O: 225 295 0800 | C: 225 247 9812
mcashio@latterblum.com

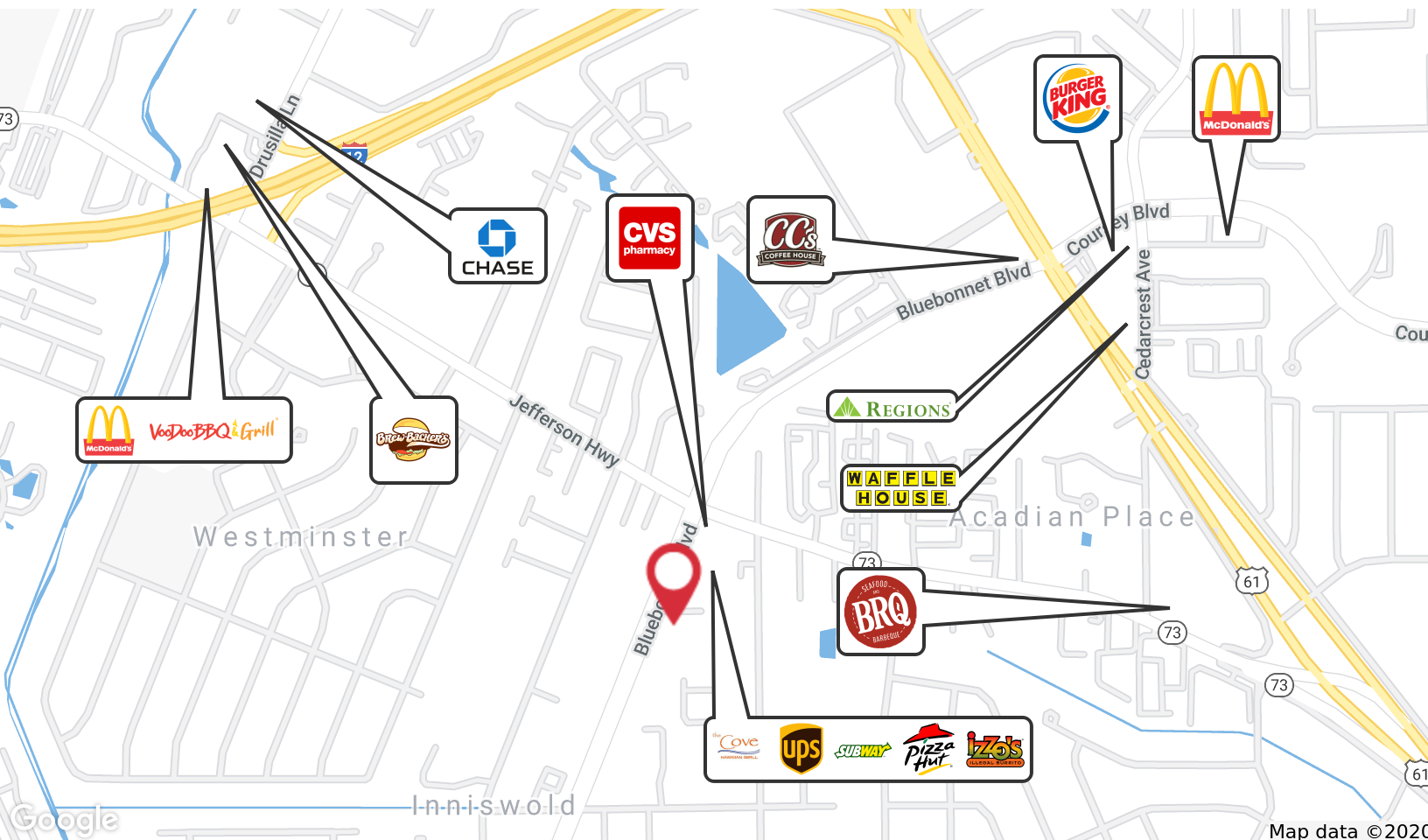
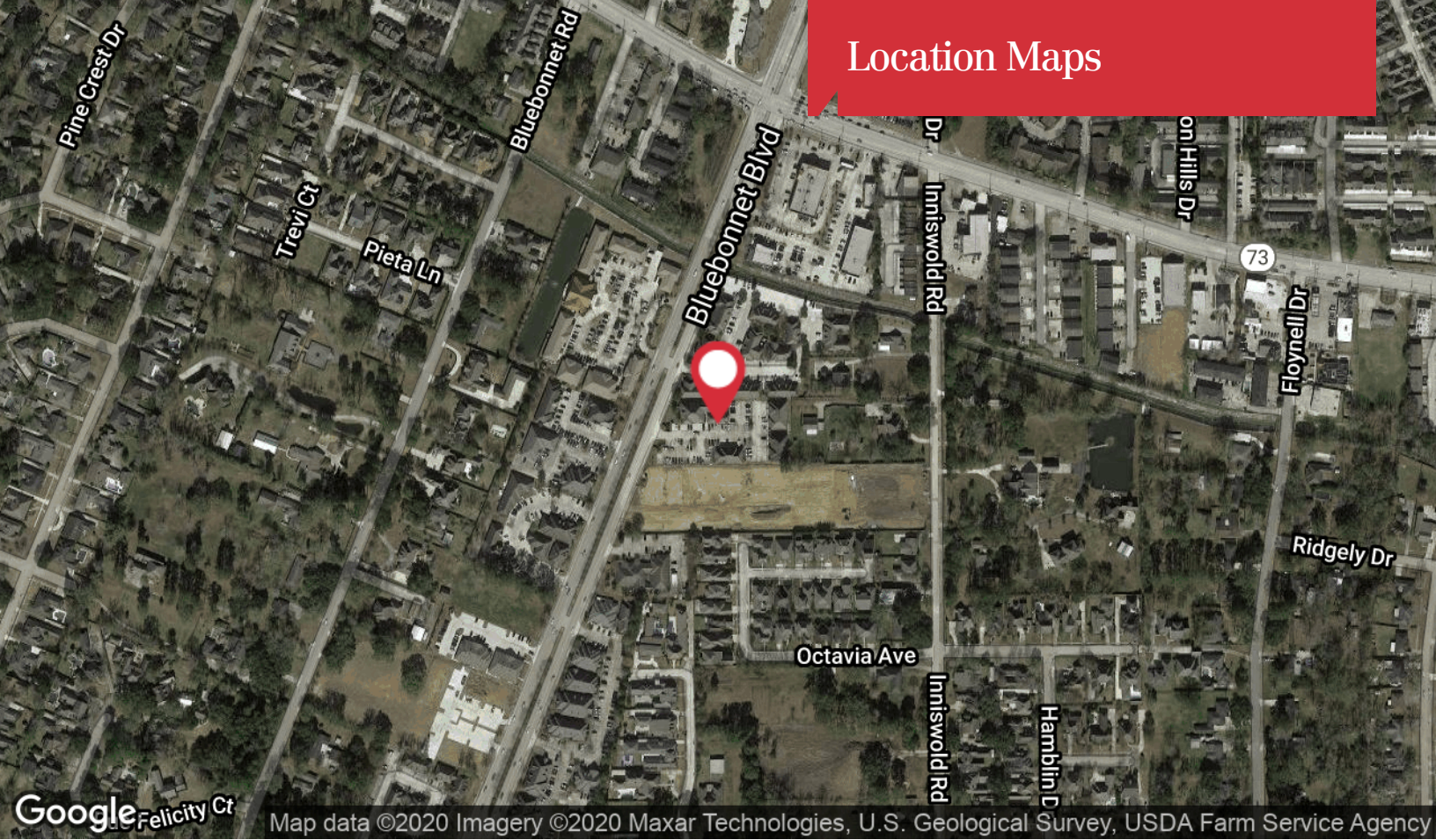
Interior Photos



Floor Plan



Location Maps



1700 City Farm Drive
Baton Rouge, LA 70806
225 295 0800 tel
latterblum.com