

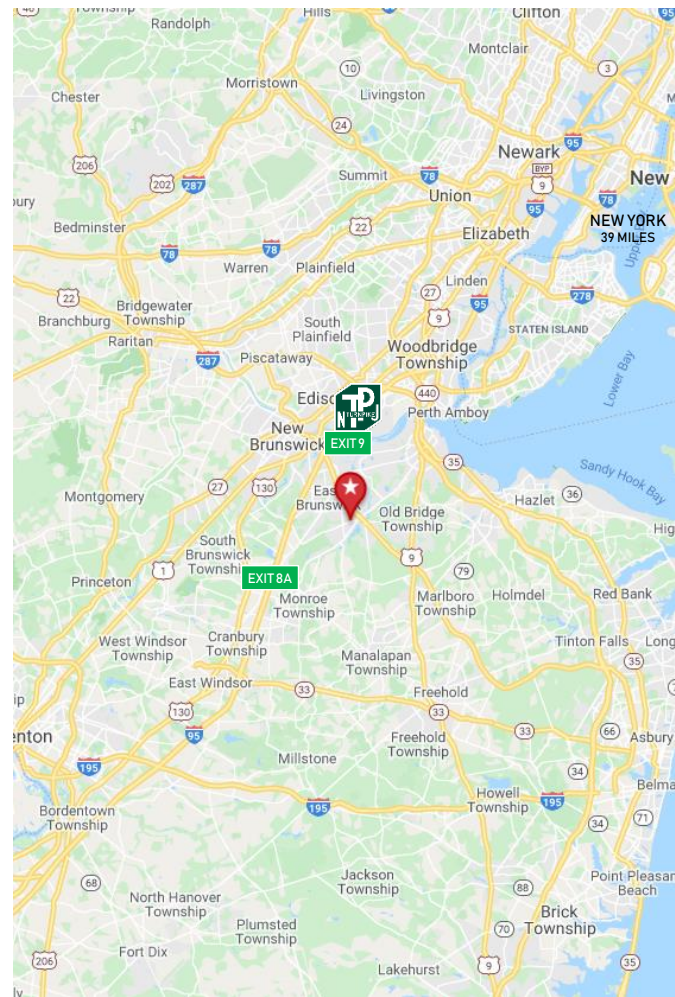


**85 Main Street
Spotswood, NJ 08884**

**429,088 SF Manufacturing Space
+/- 86 Acres of Land**

- 429,088 SF Manufacturing Warehouse on 58 Acres
- Additional land consists of 28 Acres bringing entire site to +/- 86 AC
- Heavy power; 6,000 Gallons per minute; Water
- 58 Acres is zoned LI (Light Industrial) - Factory Side
- 28 Acres is zoned R-10 (Residential) / LI Across the Street
- Ceiling Heights: 14' - 26' Clear
- 40,000 SF A/C Humidity Controlled)
- Rail: Conrail - North East Line
- Two 12 Ton Cranes - 40' Scale
- Backup Generator - servicing Water Pump room
- The site is ideally located in Spotswood just a half mile from Rt. 18 and five miles from the NJ Turnpike which provides easy access North and South

Sale Price: Call for Details

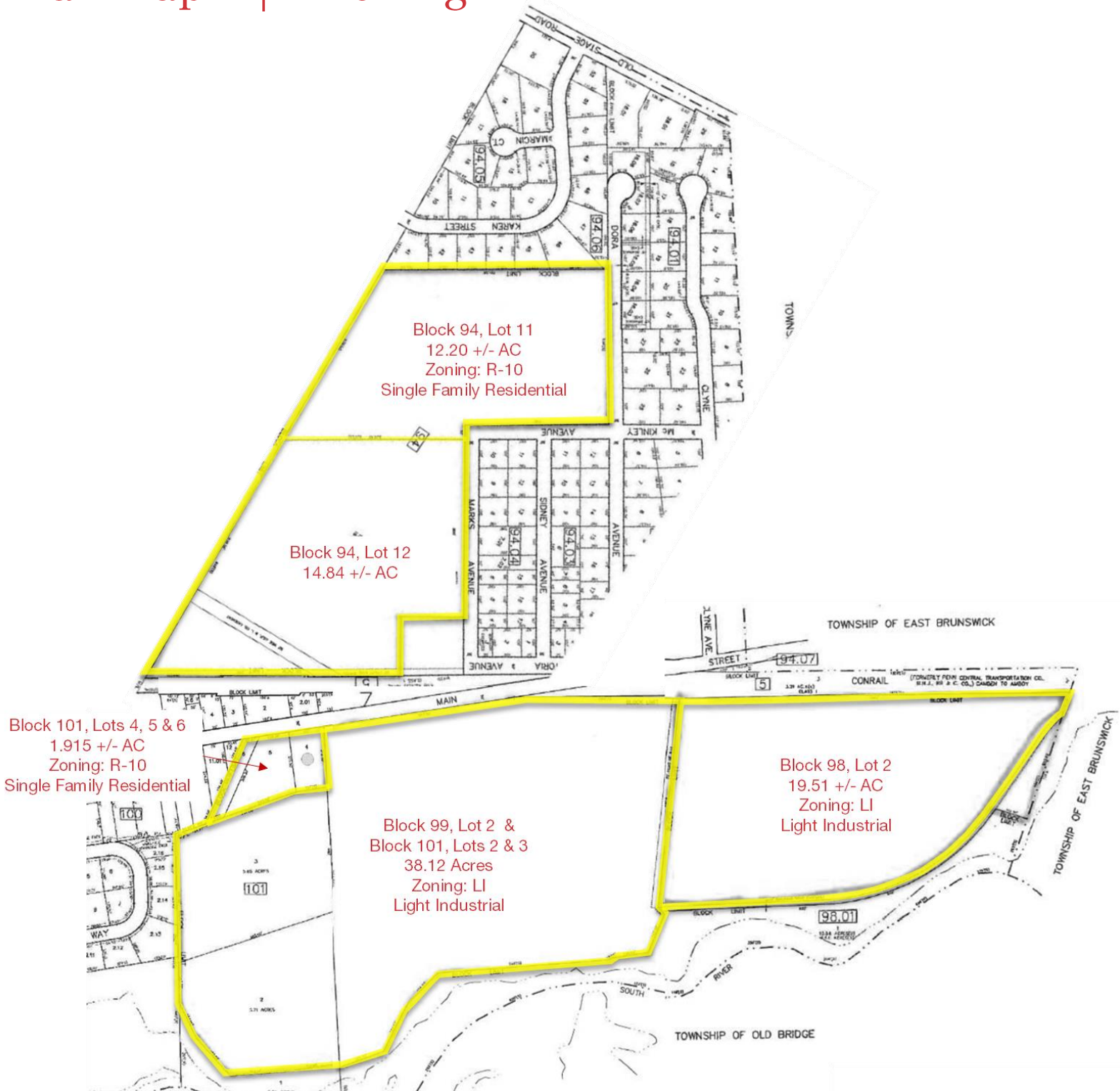


The information contained herein has been given to us by the owner of the property or other sources we deem reliable. We have no reason to doubt its accuracy, but we do not guarantee it. All information should be verified prior to purchase or lease.

Gerard Fennelly
+1 609 306 3158
Fennelly@fennelly.com

Patrick Dintrone
+1 609 532 8904
Pdintrone@fennelly.com

Tax Map | Zoning



85 Main Street

Spotswood, NJ 08884

For Sale

Manufacturing Warehouse

Property Photos



For Sale
Manufacturing Warehouse

85 Main Street
Spotswood, NJ 08884

429,088 SF Manufacturing Warehouse | +/- 86 Acres of Land

The site is ideally located in Spotswood just a half mile from Route 18 and five miles from the NJ Turnpike which provides easy access North and South.



For more information:

Gerard Fennelly

+1 609 306 3158 • fennelly@fennelly.com

Patrick Dintrone

+1 609 532 8904 • pdintrone@fennelly.com

NAI Fennelly

200A Whitehead Road, Suite 222
Hamilton, NJ 08619

+1 609 520 0061

Fennelly@fennelly.com