

Office/Medical Land For Sale
 Edison Lakes Parkway & Park Place
 Parcel 4
 Mishawaka, Indiana



COMMERCIAL REAL ESTATE SERVICES, WORLDWIDE

Divisible; Also Available for Ground Lease



Snapshot

Parcel 4:	4 Acres
Utilities:	Municipal
Zoning:	C1-Commercial
List Price:	\$325,000 Per Acre
Total:	\$1,300,000

Parcel can be divided;
 Also available for ground lease

Property Details

Great parcel of land for office or medical office development in Edison Lakes Corporate Park. Four acres are at the northwest corner of Park Place and Edison Lakes Parkway. Great location in this strong demographic area close to several major office parks, great residential subdivisions and over 5 million square feet of retail. Edison Lakes Corporate Park is a 700-acre mixed-use development combining residential, hotel and retail components, plus close to 1 million SF of Class A office space. In addition, Saint Joseph Health System Mishawaka campus recently opened its 100-acre state-of-the-art hospital and campus just one mile north of the site.

Broker Disclosure: The property is owned wholly or in part by a licensed real estate broker in the State of Indiana.

4100 Edison Lakes Parkway, Suite 350
 Mishawaka, Indiana
 574.271.4060
 574.271.4292 Fax
 www.cressy.com

Global Division of Cressy Commercial Real Estate

COREY CRESSY, CCIM
 Senior Broker
 574.485.1513
 cccressy@cressy.com

GEORGE CRESSY, CCIM
 Chief Executive Officer
 574.485.1515
 gcressy@cressy.com

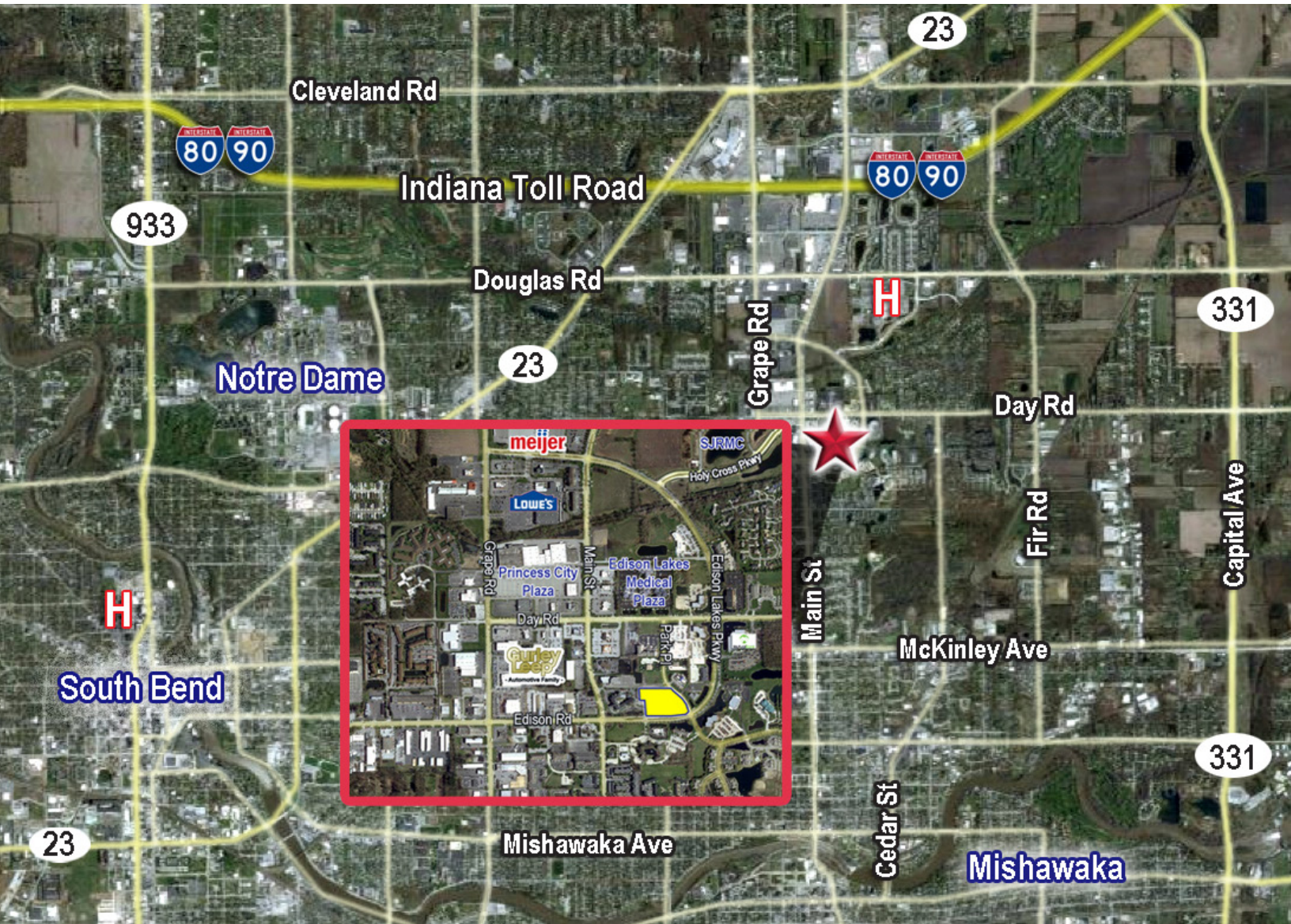
Information furnished regarding property for sale, rental or financing is from sources deemed reliable. But no warranty or representation is made as to the accuracy thereof and same is submitted subject to errors, omissions, change of price, rental or other conditions, prior sale, leased, financing or withdrawal without notice. No liability of any kind is to be imposed on the broker herein.

Office/Medical Land For Sale
Edison Lakes Parkway & Park Place
Parcel 4
Mishawaka, Indiana

NAI Cressy

COMMERCIAL REAL ESTATE SERVICES, WORLDWIDE

Located In Edison Lakes Corporate park



Property Details

The property is located on the east side of Mishawaka in Edison Lakes Corporate Park and in the University Park Trade Area that encompasses over 5 million SF of commercial, retail, office, hospitality and medical space. The site is minutes from the new Capital Avenue extension and the Main Street/Grape Road corridors, the Saint Joseph Health System Mishawaka campus development and Elkhart.

4100 Edison Lakes Parkway, Suite 350
Mishawaka, Indiana
574.271.4060
574.271.4292 Fax
www.cressy.com

Global Division of Cressy Commercial Real Estate

COREY CRESSY, CCIM
Senior Broker
574.485.1513
ccressy@cressy.com

GEORGE CRESSY, CCIM
Chief Executive Officer
574.485.1515
gcressy@cressy.com

Information furnished regarding property for sale, rental or financing is from sources deemed reliable. But no warranty or representation is made as to the accuracy thereof and same is submitted subject to errors, omissions, change of price, rental or other conditions, prior sale, leased, financing or withdrawal without notice. No liability of any kind is to be imposed on the broker herein.