

Commercial Development Land For Sale

1510 E. Douglas Road

Mishawaka, Indiana



Great Access & Frontage



Snapshot

Land:	2.23+/- Acres (Divisible)
Utilities:	Water, Sewer, Gas & Electric At Street
Zoning:	C-1 Commercial
List Price:	\$375,000 Per Acre
Total:	\$836,250

Property Details

Great commercial development potential for this 2.23+/- acre site near the northwest corner of Douglas and Fir. Site has approximately 316' of frontage on Douglas, located near a signalized corner and can be divided down to 1-acre. Parcels were recently annexed into the City of Mishawaka. Zoned C-1 which allows for commercial and retail uses. Municipal utilities at the street. The property is adjacent to a Senior Living Community, is across from the WSBT TV/radio station and is only a half mile east of the Saint Joseph Health System Mishawaka campus. The property is located in a strong demographic trade area.

The property is owned wholly or in part by a licensed real estate broker in the State of Indiana.

4100 Edison Lakes Parkway, Suite 350
Mishawaka, Indiana
574.271.4060
574.271.4292 Fax
www.cressy.com

A Global Brokerage Division of Cressy Commercial Real Estate

COREY CRESSY, CCIM
Senior Broker, Principal
574.485.1513
ccressy@cressy.com

GEORGE CRESSY, CCIM
Chief Executive Officer
574.485.1515
gcressy@cressy.com

Information furnished regarding property for sale, rental or financing is from sources deemed reliable. But no warranty or representation is made as to the accuracy thereof and same is submitted subject to errors, omissions, change of price, rental or other conditions, prior sale, leased, financing or withdrawal without notice. No liability of any kind is to be imposed on the broker herein.

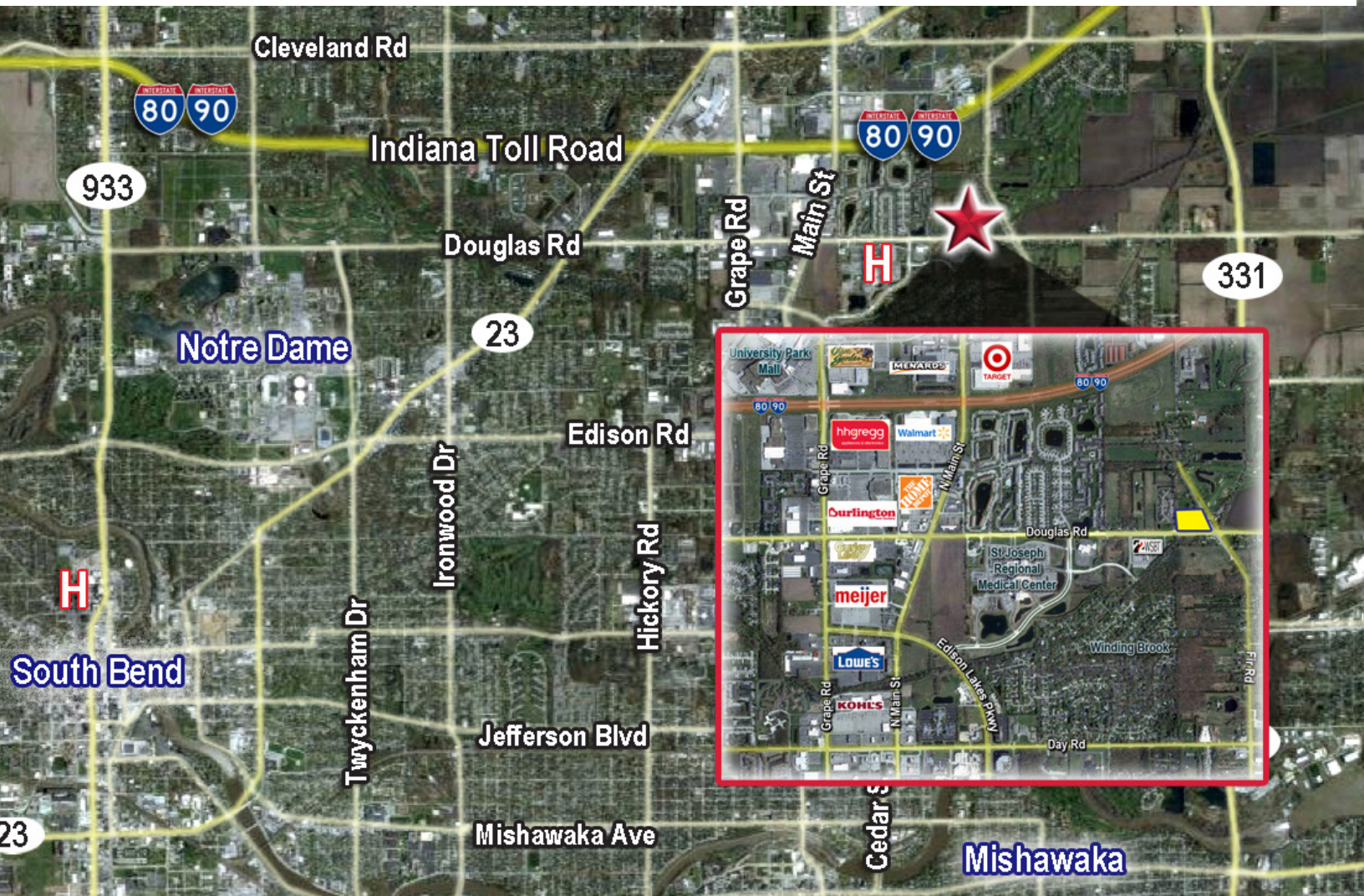
Commercial Development Land For Sale

1510 E. Douglas Road

Mishawaka, Indiana



Excellent Proximity To Indiana's Second Largest Retail Trade Area



Location

The property is at the northwest corner of Fir and Douglas Roads in Mishawaka. It is located between the I-80/90 Toll Road exit in Mishawaka and the east side of the University Park Trade Area (UPTA). The UPTA is one of the most dominant retail markets in the state and contains over 6.5 million SF of retail, office and hotels with a population of 450,000. The area benefits greatly from nearby universities including the University of Notre Dame, Saint Mary's College, Bethel College and Indiana University South Bend. Visitors to the University of Notre Dame spend (annually) over \$92 million in the area.

4100 Edison Lakes Parkway, Suite 350
Mishawaka, Indiana
574.271.4060
574.271.4292 Fax
www.cressy.com

A Global Brokerage Division of Cressy Commercial Real Estate

COREY CRESSY, CCIM
Senior Broker, Principal
574.485.1513
ccressy@cressy.com

GEORGE CRESSY, CCIM
Chief Executive Officer
574.485.1515
gcressy@cressy.com

Information furnished regarding property for sale, rental or financing is from sources deemed reliable. But no warranty or representation is made as to the accuracy thereof and same is submitted subject to errors, omissions, change of price, rental or other conditions, prior sale, leased, financing or withdrawal without notice. No liability of any kind is to be imposed on the broker herein.