

Commercial/Retail Land For Sale

Parcel 9 | Southeast Corner Of Day & Filbert

Mishawaka, Indiana



COMMERCIAL REAL ESTATE SERVICES, WORLDWIDE

2.87 Acres Zoning For Shopping Center Use



Snapshot

Parcel 9:	2.87 Acres
Utilities:	Municipal
Zoning:	C2-Shopping Center Use
List Price:	\$325,000 Per Acre

Parcel can be divided;
Also available for ground lease

Property Details

2.87 acres on the southeast corner of Day and Filbert roads is surrounded by residential development and near the entrance to the Edison Lakes Corporate Park. Great location in this strong demographic area close to several major office parks and over 5 million SF of retail. Edison Lakes Corporate Park is a 700-acre mixed-use development combining residential, hotel and retail components, plus close to 1 million SF of Class A office space. In addition, Saint Joseph Health System, Mishawaka recently opened its new 100-acre state-of-the-art hospital and campus just one mile north of the site.

Broker Disclosure: The property is owned wholly or in part by a licensed real estate broker in the State of Indiana.

4100 Edison Lakes Parkway, Suite 350
Mishawaka, Indiana
574.271.4060
574.271.4292 Fax
www.cressy.com

Global Brokerage Division of Cressy Commercial Real Estate

COREY CRESSY, CCIM
Senior Broker, Principal
574.485.1513
ccressy@cressy.com

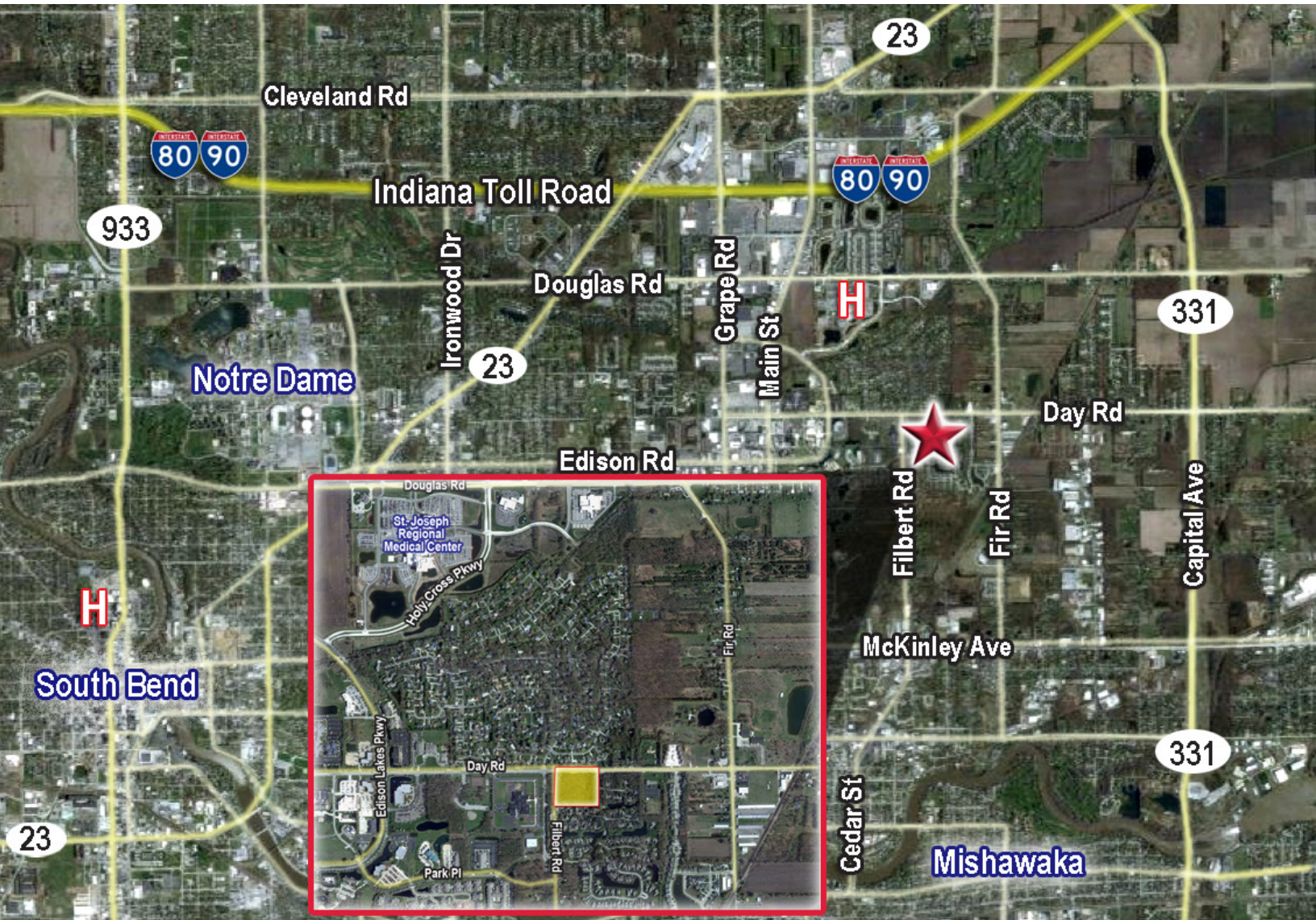
GEORGE CRESSY, CCIM
Chief Executive Officer
574.485.1515
gcressy@cressy.com

Information furnished regarding property for sale, rental or financing is from sources deemed reliable. But no warranty or representation is made as to the accuracy thereof and same is submitted subject to errors, omissions, change of price, rental or other conditions, prior sale, leased, financing or withdrawal without notice. No liability of any kind is to be imposed on the broker herein.

Commercial/Retail Land For Sale

Parcel 9 | Southeast Corner Of Day & Filbert
Mishawaka, Indiana

Corner Location



Location

The property is located on the east side of Edison Lakes Corporate Park and the University Park Trade Area that encompasses over 5 million SF of commercial, retail, office, hospitality and medical space. The site is minutes from the new Capital Avenue extension and the Main Street/Grape Road corridors, the Saint Joseph Health System, Mishawaka development and Elkhart.

4100 Edison Lakes Parkway, Suite 350
Mishawaka, Indiana
574.271.4060
574.271.4292 Fax
www.cressy.com

Global Brokerage Division of Cressy Commercial Real Estate

COREY CRESSY, CCIM
Senior Broker, Principal
574.485.1513
ccressy@cressy.com

GEORGE CRESSY, CCIM
Chief Executive Officer
574.485.1515
gcressy@cressy.com

Information furnished regarding property for sale, rental or financing is from sources deemed reliable. But no warranty or representation is made as to the accuracy thereof and same is submitted subject to errors, omissions, change of price, rental or other conditions, prior sale, leased, financing or withdrawal without notice. No liability of any kind is to be imposed on the broker herein.