

Office Space for Lease

319 W. Jefferson Blvd.

South Bend, Indiana



COMMERCIAL REAL ESTATE SERVICES, WORLDWIDE

**4,953 SF - 9,914 SF for Lease in South Bend's CBD**



## Snapshot

Building:	24,521 SF
Available:	4,958 SF - 9,916 SF
Land:	0.69 Acres
Zoning:	MU - Mixed Use
Parking:	47 Total Parking Spaces
Year Built:	1933
Operating Expenses:	Approx. \$5.92 PSF
Lease Rate:	\$6.50 PSF NNN

## Property Details

Well maintained, 2-story office building in the central business district of South Bend. Many private offices, large open areas, restrooms, and kitchenette. Walking distance to City County Building and Four Winds Field.

*Property is owned wholly or in part by a licensed real estate broker in the State of Indiana.*

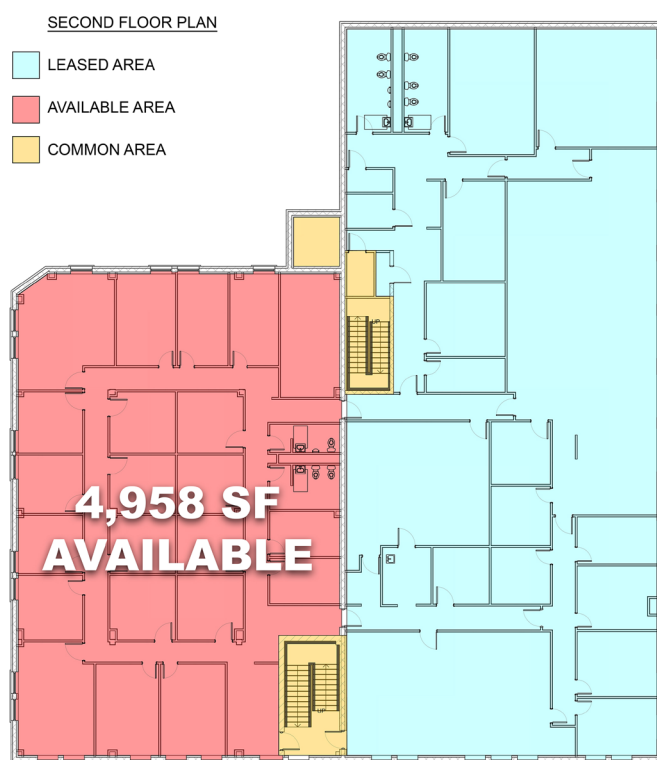
4100 Edison Lakes Parkway, Suite 350  
Mishawaka, Indiana  
574.271.4060  
574.271.4292 Fax  
www.cressy.com

*A Global Brokerage Division of Cressy Commercial Real Estate*

**GEORGE CRESSY, CCIM**  
*Senior Broker, Chairman of the Board*  
574.485.1515  
gcressy@cressy.com

**COREY CRESSY, CCIM**  
*Senior Broker, Principal*  
574.485.1513  
ccressy@cressy.com

Information furnished regarding property for sale, rental or financing is from sources deemed reliable. But no warranty or representation is made as to the accuracy thereof and same is submitted subject to errors, omissions, change of price, rental or other conditions, prior sale, leased, financing or withdrawal without notice. No liability of any kind is to be imposed on the broker herein.



4100 Edison Lakes Parkway, Suite 350

Mishawaka, Indiana

574.271.4060

574.271.4292 Fax

[www.cressy.com](http://www.cressy.com)

A Global Brokerage Division of Cressy Commercial Real Estate

**GEORGE CRESSY, CCIM**

Senior Broker, Chairman of the Board

574.485.1515

[gccressy@cressy.com](mailto:gccressy@cressy.com)

**COREY CRESSY, CCIM**

Senior Broker, Principal

574.485.1513

[ccressy@cressy.com](mailto:ccressy@cressy.com)

Information furnished regarding property for sale, rental or financing is from sources deemed reliable. But no warranty or representation is made as to the accuracy thereof and same is submitted subject to errors, omissions, change of price, rental or other conditions, prior sale, leased, financing or withdrawal without notice. No liability of any kind is to be imposed on the broker herein.



Office Space for Lease

319 W. Jefferson Blvd.  
South Bend, Indiana

Excellent Visibility & Located Within the CBD



## Location

The former Family and Children's Center building is located in the central business district of South Bend between Lafayette Blvd. and William Street. It is within walking distance to the courthouse, county and city offices, financial institutions, and many restaurants.

4100 Edison Lakes Parkway, Suite 350  
Mishawaka, Indiana  
574.271.4060  
574.271.4292 Fax

[www.cressy.com](http://www.cressy.com)

A Global Brokerage Division of Cressy Commercial Real Estate

**GEORGE CRESSY, CCIM**  
Senior Broker, Chairman of the Board  
574.485.1515  
[gcressy@cressy.com](mailto:gcressy@cressy.com)

**COREY CRESSY, CCIM**  
Senior Broker, Principal  
574.485.1513  
[ccressy@cressy.com](mailto:ccressy@cressy.com)

Information furnished regarding property for sale, rental or financing is from sources deemed reliable. But no warranty or representation is made as to the accuracy thereof and same is submitted subject to errors, omissions, change of price, rental or other conditions, prior sale, leased, financing or withdrawal without notice. No liability of any kind is to be imposed on the broker herein.



Office Space for Lease

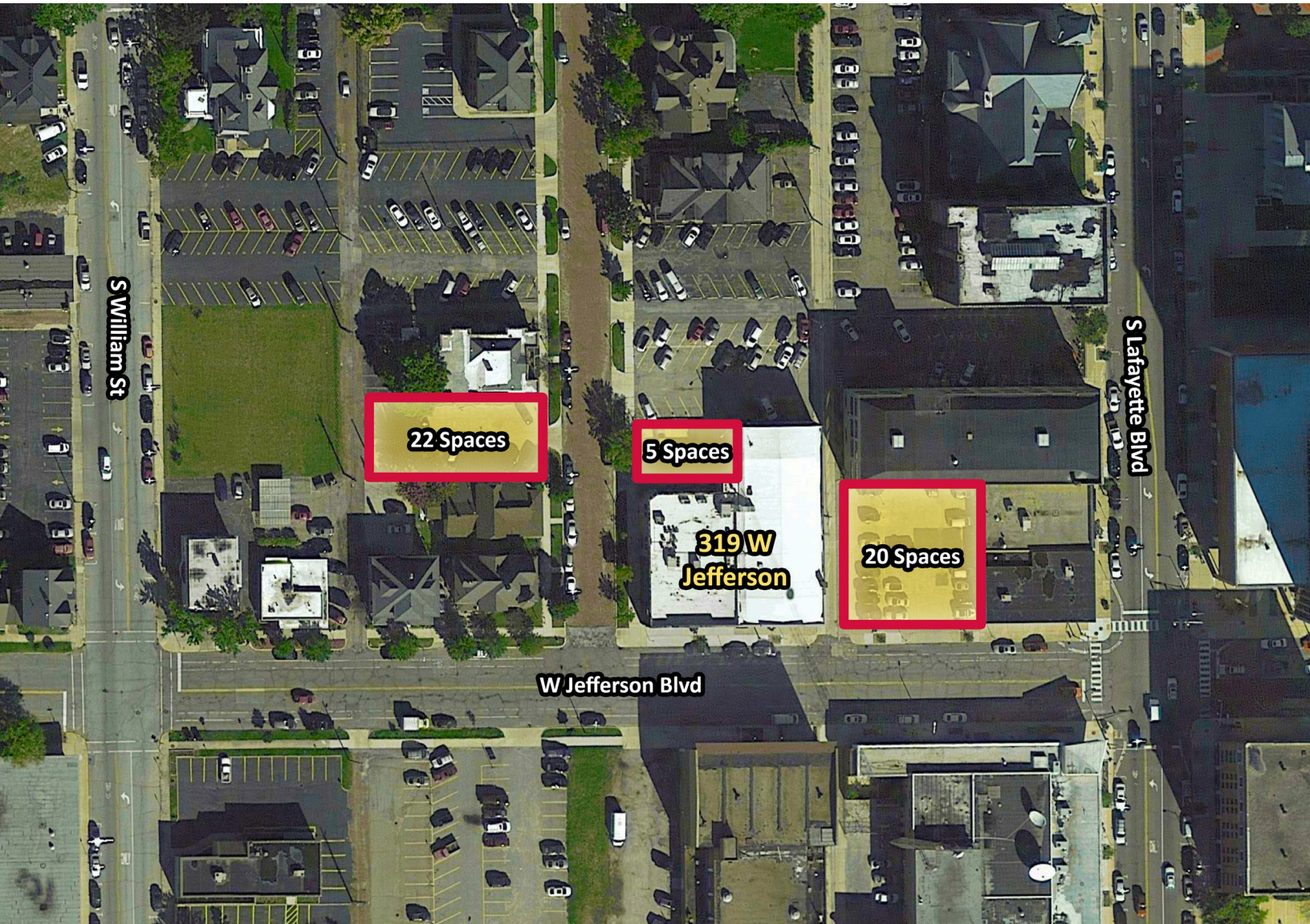
319 W. Jefferson Blvd.

South Bend, Indiana



COMMERCIAL REAL ESTATE SERVICES, WORLDWIDE

Available Parking



4100 Edison Lakes Parkway, Suite 350

Mishawaka, Indiana

574.271.4060

574.271.4292 Fax

[www.cressy.com](http://www.cressy.com)

A Global Brokerage Division of Cressy Commercial Real Estate

**GEORGE CRESSY, CCIM**

Senior Broker, Chairman of the Board

574.485.1515

[gcressy@cressy.com](mailto:gcressy@cressy.com)

**COREY CRESSY, CCIM**

Senior Broker, Principal

574.485.1513

[ccressy@cressy.com](mailto:ccressy@cressy.com)

Information furnished regarding property for sale, rental or financing is from sources deemed reliable. But no warranty or representation is made as to the accuracy thereof and same is submitted subject to errors, omissions, change of price, rental or other conditions, prior sale, leased, financing or withdrawal without notice. No liability of any kind is to be imposed on the broker herein.