

Commercial Land For Sale

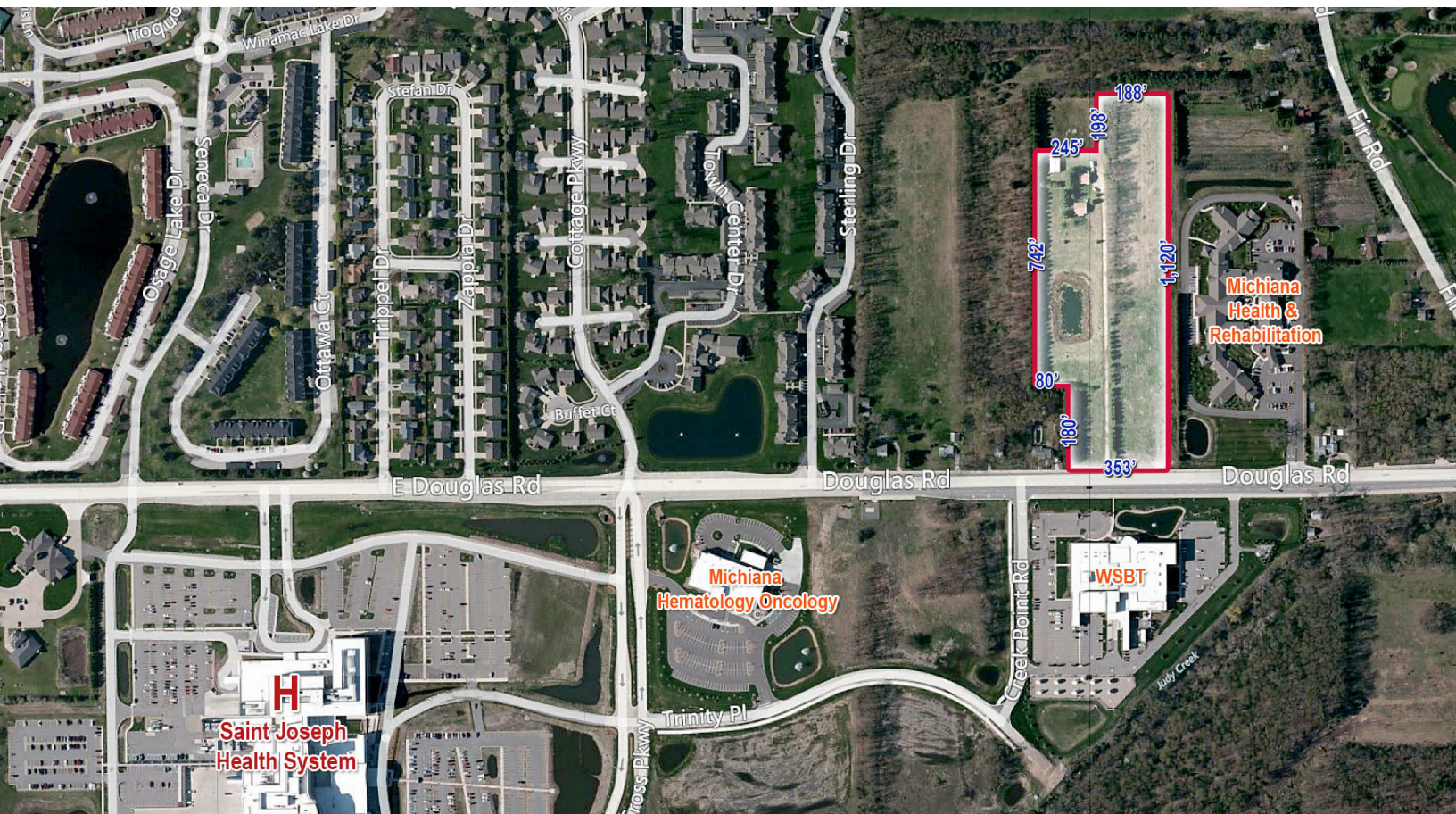
1240 E. Douglas Road

Mishawaka, Indiana

NAICressy

COMMERCIAL REAL ESTATE SERVICES, WORLDWIDE

Approximately 9.7 Acres With 352' ± Of Frontage On Douglas Road



Snapshot

Parcel:	Approximately 9.7 Acres
Utilities:	Served By Well & Septic; Municipal Utilities At Road
Zoning:	S2 PUD
Frontage:	353' On Douglas
List Price:	\$250,000 Per Acre

Also available for ground lease

Property Details

Approximately 9.7 acres on newly widened (5-lane) Douglas Road across from the 100-acre Saint Joseph Health Sytem Mishawaka campus and WSBT studios. Great location on the north side of Douglas Road, between Main Street and Fir Road, in this strong demographic area.

The property is in the University Park Trade area that consists of over 6 million SF of retail, commercial, medical office and professional office space.

Property is owned in whole or in part by licensed real estate brokers in the State of Indiana.

4100 Edison Lakes Parkway, Suite 350
Mishawaka, Indiana
574.271.4060
574.271.4292 Fax
www.cressy.com

A Global Brokerage Division of Cressy Commercial Real Estate

COREY CRESSY, CCIM
Senior Broker, Partner
574.485.1513
ccressy@cressy.com

GEORGE CRESSY, CCIM
Chief Executive Officer
574.485.1515
gcressy@cressy.com

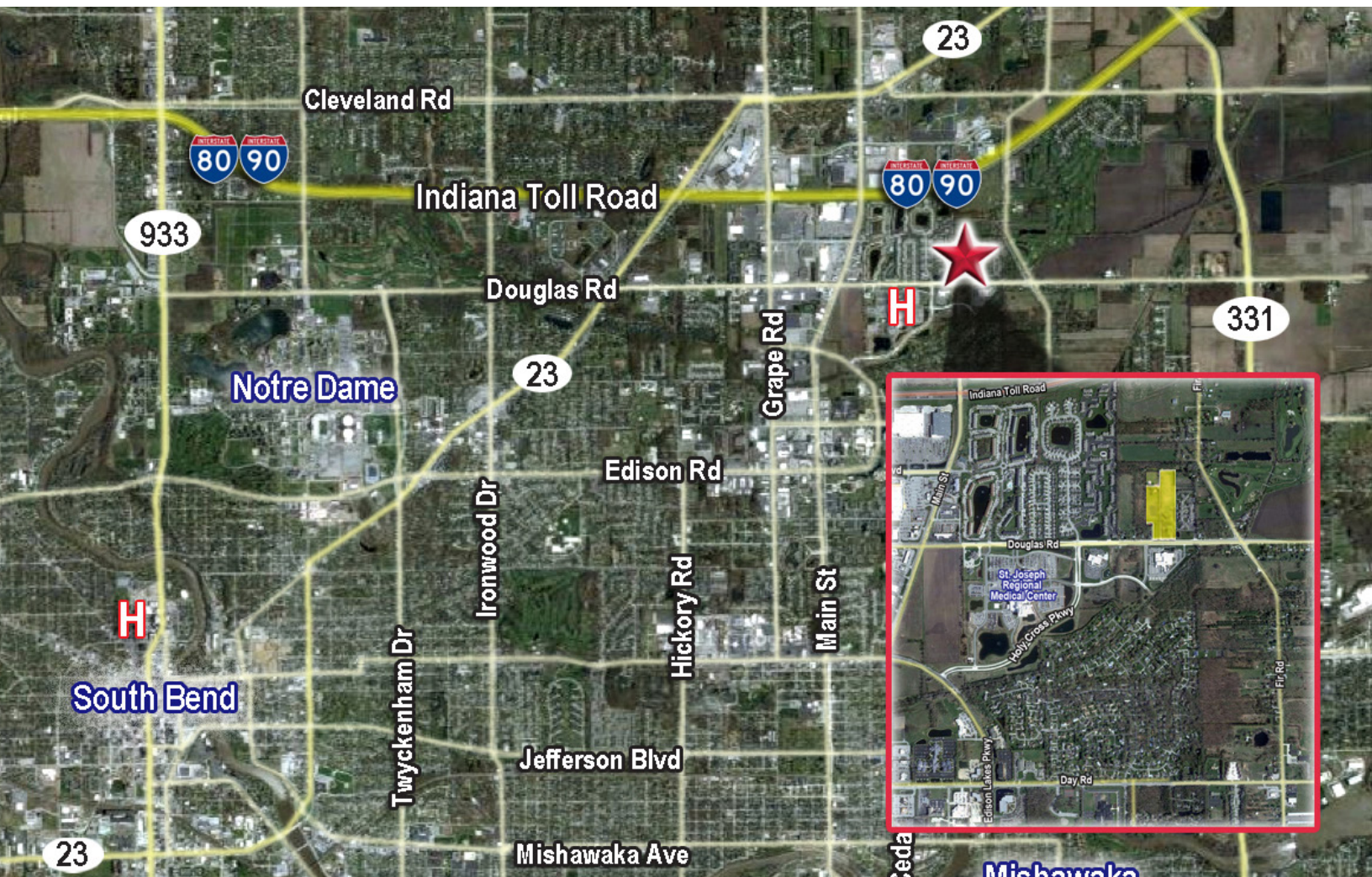
Information furnished regarding property for sale, rental or financing is from sources deemed reliable. But no warranty or representation is made as to the accuracy thereof and same is submitted subject to errors, omissions, change of price, rental or other conditions, prior sale, leased, financing or withdrawal without notice. No liability of any kind is to be imposed on the broker herein.

Commercial Land For Sale

1240 E. Douglas Road
Mishawaka, Indiana

NAI Cressy
COMMERCIAL REAL ESTATE SERVICES, WORLDWIDE

Across The Street From The Saint Joseph Health System Campus



Location

The property is located on the east side of Mishawaka in Edison Lakes Corporate Park and in the University Park Trade Area that encompasses over 5 million SF of commercial, retail, office, hospitality and medical space. The site is minutes from the new Capital Avenue extension and the Main Street/Grape Road corridors, the Saint Joseph Health System Mishawaka development and Elkhart.

4100 Edison Lakes Parkway, Suite 350
Mishawaka, Indiana
574.271.4060
574.271.4292 Fax
www.cressy.com

A Global Brokerage Division of Cressy Commercial Real Estate

COREY CRESSY, CCIM
Senior Broker, Partner
574.485.1513
ccressy@cressy.com

GEORGE CRESSY, CCIM
Chief Executive Officer
574.485.1515
gcressy@cressy.com

Information furnished regarding property for sale, rental or financing is from sources deemed reliable. But no warranty or representation is made as to the accuracy thereof and same is submitted subject to errors, omissions, change of price, rental or other conditions, prior sale, leased, financing or withdrawal without notice. No liability of any kind is to be imposed on the broker herein.