

# 786 Enfield Street

Enfield, CT

For Lease

## Retail/Office Space

Enfield, CT



## 2 Retail/Office Spaces For Lease

Mountain Laurel Shoppes is a three building neighborhood shopping center with 169 parking spaces.

**LOCATION:** The property is located on the signalized corner of Enfield Street (Route 5) and Alden Avenue in the Thompsonville section of Enfield, CT and is adjacent to the Enfield Town Hall. With easy access to I-91, the Shoppes are in close proximity to Springfield and Hartford.

**SPACE AVAILABLE:** (1) 1,760 square foot space (formerly Edward Jones Investments) and (1) 2,500 square foot space.



**CONTACT BROKER  
FOR MORE INFORMATION**

**Indrek Buttner**

860.672.5200  
ibuttner@glickmankovago.com

All information regarding property for sale or lease is from sources deemed reliable. While we do not doubt its accuracy, we have not verified it and make no warranty or representation to the accuracy thereof and the same is submitted subject to errors, omissions, change of price, rental or other conditions, prior sale or lease or withdrawal without notice. Any projections and assumptions are used for convenience and example only and do not represent actual future performance. You and your trusted advisors should independently verify all information and projections.

1 Mercantile Street  
Worcester MA 01608  
508.753.9100

[www.glickmankovago.com](http://www.glickmankovago.com)

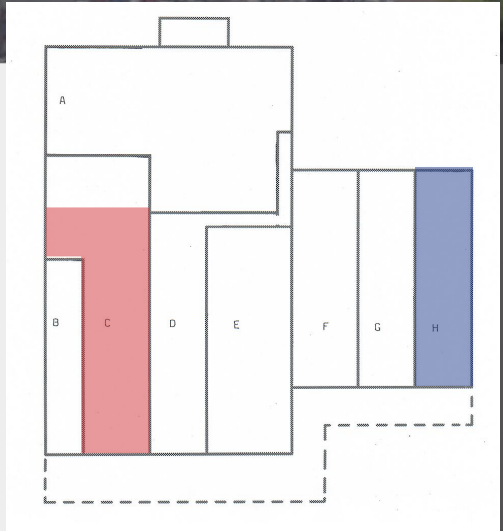


	1 Mile	3 Mile	5 Mile
<b>Population</b>	<b>9,041</b>	<b>35,766</b>	<b>84,347</b>
<b>No. of Households</b>	<b>3,764</b>	<b>24,607</b>	<b>31,190</b>
<b>Average Income</b>	<b>\$63,678</b>	<b>\$81,809</b>	<b>\$91,831</b>
<b>Average Daily Traffic (2012) — 15,800</b>			

For more information:

**Indrek Buttner**

860.672.5200  
ibuttner@glickmankovago.com



2,500 sf      1,760 sf

\* not to scale

