



5050 Tilghman Street

Suite 410, Allentown, Lehigh County, PA

Property Features

- Class A office suite in 66,774 SF office building in professional park, Commerce Corporate Center
- Current lease goes until 11/30/2022 with options for longer lease term
- Ample parking
- Variety of amenities onsite including gym, conference center, deli, and nearby walking trails and in immediate area including restaurants, retail, and hotels
- Conveniently located off Tilghman Street, minutes to PA Turnpike 476 with easy access to Routes 22 and I-78/309 Interchange

For more information:

Mike Adams

610.871.1701 | madams@naisummit.com



AVAILABLE SF **1,242**

BUILDING SIZE **66,774 SF**

PARKING **Ample Parking**

RATE **\$20.00/SF Modified Gross**

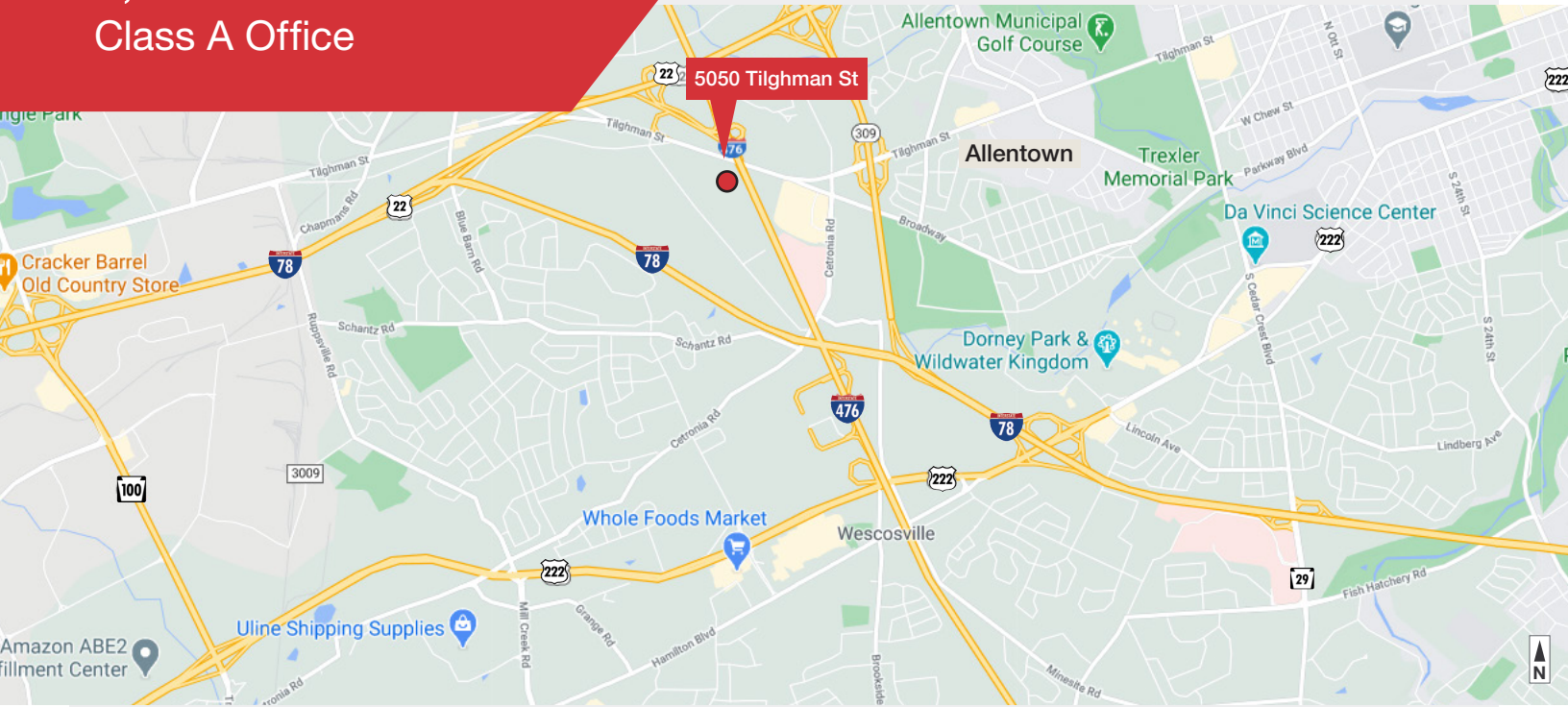
NO WARRANTY OR REPRESENTATION, EXPRESS OR IMPLIED, IS MADE AS TO THE ACCURACY OF THE INFORMATION CONTAINED HEREIN, AND THE SAME IS SUBMITTED SUBJECT TO ERRORS, OMISSIONS, CHANGE OF PRICE, RENTAL OR OTHER CONDITIONS, PRIOR SALE, LEASE OR FINANCING, OR WITHDRAWAL WITHOUT NOTICE, AND OF ANY SPECIAL LISTING CONDITIONS IMPOSED BY OUR PRINCIPALS NO WARRANTIES OR REPRESENTATIONS ARE MADE AS TO THE CONDITION OF THE PROPERTY OR ANY HAZARDS CONTAINED THEREIN ARE ANY TO BE IMPLIED.

NAI Summit

1620 Pond Rd, Suite 150
Allentown PA 18104

610.264.0200 | naisummit.com

For Lease
1,242 SF
Class A Office



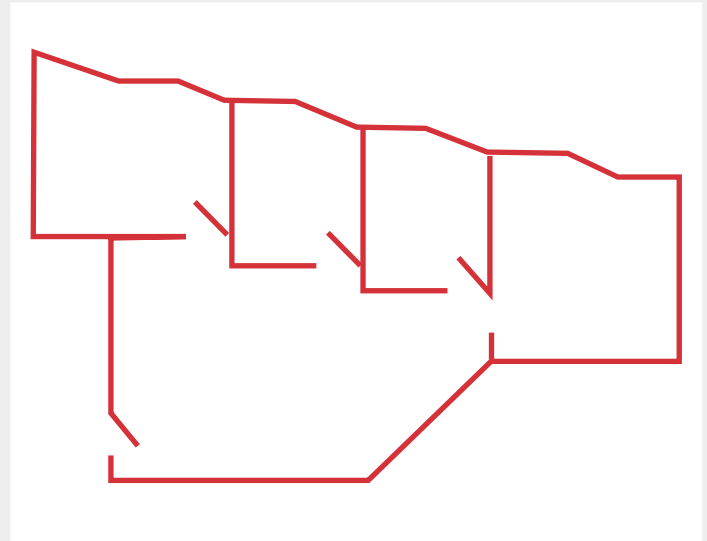
Location Advantages

- Minutes to PA Turnpike 476, 78/309 Interchange, and Route 22
- Ample area amenities in immediate area
- Multiple corporate neighbors in Commerce Corporate Park

Property Highlights

- Conveniently located with ample parking
- Variety of on-site amenities within professional office park

Floor Plan



For more information:

Mike Adams

610.871.1701 | madams@naisummit.com