

RARELY AVAILABLE



NEARBY TENANTS



OFFICE/MEDICAL SPACE FOR LEASE

- ±7,900 SF
- Waterfront property with magnificent water and Baltimore skyline views
- Adjacent to Canton Crossing
- Walkable amenities include food, banking, medical, and retail
- Free surface parking at a ratio of 3/1,000 SF, along with street parking
- Highway access to I-95 and I-895 within 2 miles
- Boston Street signage available

BRAD BERZINS, SIOR

bberzins@klnb.com | 443-632-2048

JESSE SCHWARTZMAN

jschwartzman@klnb.com | 443-632-2067

LOCATION

3301 BOSTON STREET

3301 BOSTON STREET, BALTIMORE, MD 21224, BALTIMORE CITY



BRAD BERZINS, SIOR
bberzins@klnb.com | 443-632-2048

JESSE SCHWARTZMAN
jschwartzman@klnb.com | 443-632-2067



MARKET

3301 BOSTON STREET

3301 BOSTON STREET, BALTIMORE, MD 21224, BALTIMORE CITY



BRAD BERZINS, SIOR

bberzins@klnb.com | 443-632-2048

JESSE SCHWARTZMAN

jschwartzman@klnb.com | 443-632-2067



3301 BOSTON STREET

3301 BOSTON STREET, BALTIMORE, MD 21224, BALTIMORE CITY



BRAD BERZINS, SIOR

bberzins@klnb.com | 443-632-2048

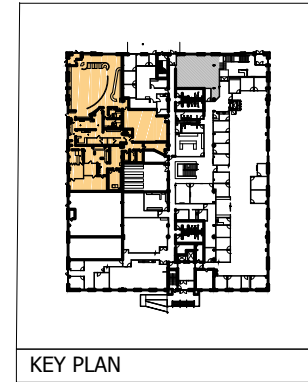
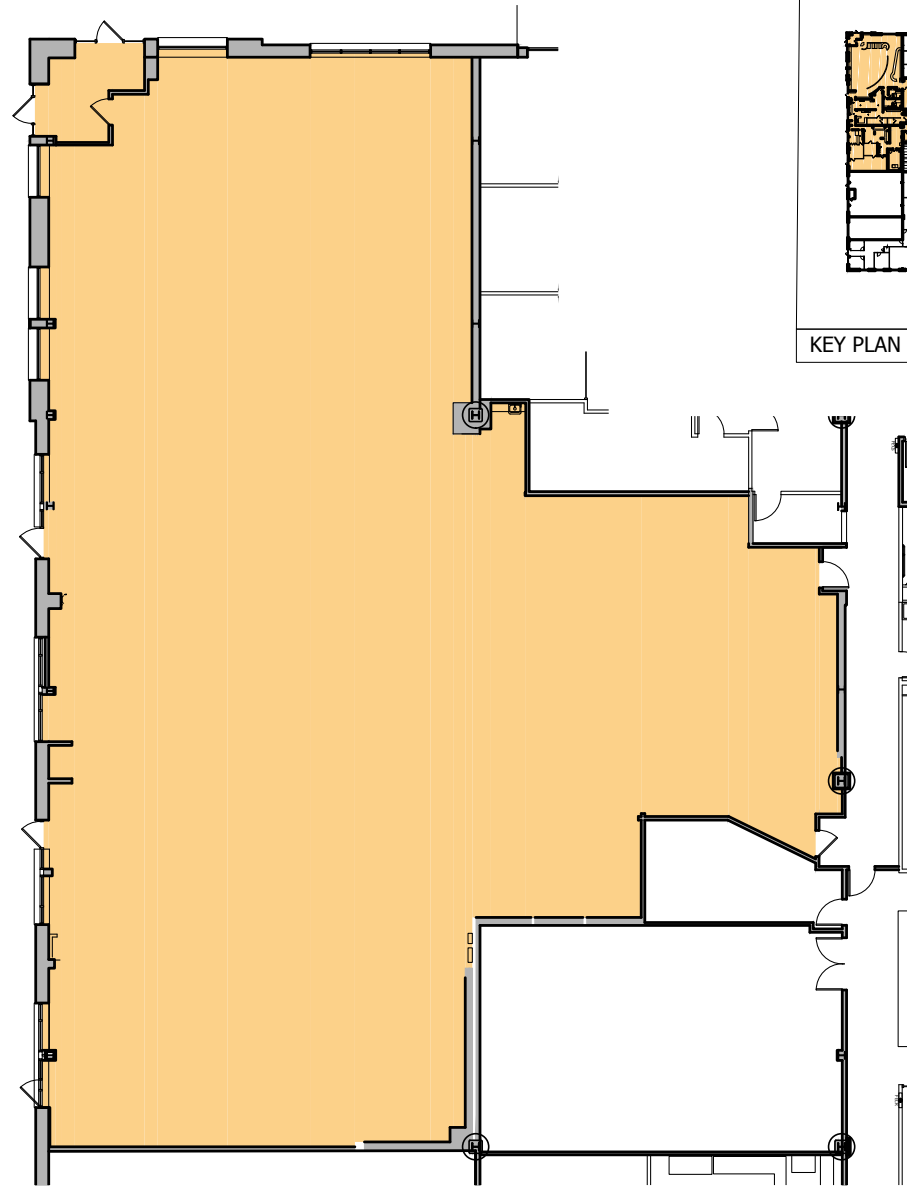
JESSE SCHWARTZMAN

jschwartzman@klnb.com | 443-632-2067

FLOOR PLAN

3301 BOSTON STREET

3301 BOSTON STREET, BALTIMORE, MD 21224, BALTIMORE CITY



KEY PLAN

TOTAL
SQUARE FOOTAGE:
7900 SQ. FT.

BRAD BERZINS, SIOR

bberzins@klnb.com | 443-632-2048

JESSE SCHWARTZMAN

jschwartzman@klnb.com | 443-632-2067



PHOTOS

3301 BOSTON STREET

3301 BOSTON STREET, BALTIMORE, MD 21224, BALTIMORE CITY



BRAD BERZINS, SIOR

bberzins@klnb.com | 443-632-2048

JESSE SCHWARTZMAN

jschwartzman@klnb.com | 443-632-2067

NAklnb

FOR MORE INFORMATION, PLEASE CONTACT:

BRAD BERZINS, SIOR

bberzins@klnb.com

443-632-2048

JESSE SCHWARTZMAN

jschwartzman@klnb.com

443-632-2067

100 West Road, Suite 505, Towson, MD 21204

.....

klnb.com

 facebook.com/KLNB

 @KLNBLLC

 linkedin.com/company/klnb

 instagram.com/klnblc

CLICK TO VIEW PROPERTY WEBSITE