

Highly-Visible I-25 Land

AT THE INTERSECTION OF I-25 & US HIGHWAY 84

SEC I-25 & U.S. Hwy. 84
Romeroville, NM 87701

I-25 & U.S. Hwy. 84 South of Las Vegas

For Sale

Sale Price

- \$400,000 (\$7,400/Acre)

Available

- ±54.6 Acres

Property Highlights

- Great visibility and access from I-25 at Exit 339 for Romeroville
- Ideal location for commercial development:
 - Truck stop/gas station
 - Convenience store
 - Campsite/RV parking
 - Self storage
- Utilities and well
- Railroad frontage
- Property is fully fenced
- Billboard lease that generates ±\$600 annually through to 2027



got space

NAI Maestas & Ward

418 Cerrillos Rd. | Suite 11 | Santa Fe, NM 87501

505 988 8081 gotSPACEUSA.com



For more information:

Tai Bixby, CCIM

tai@gotSPACEUSA.com

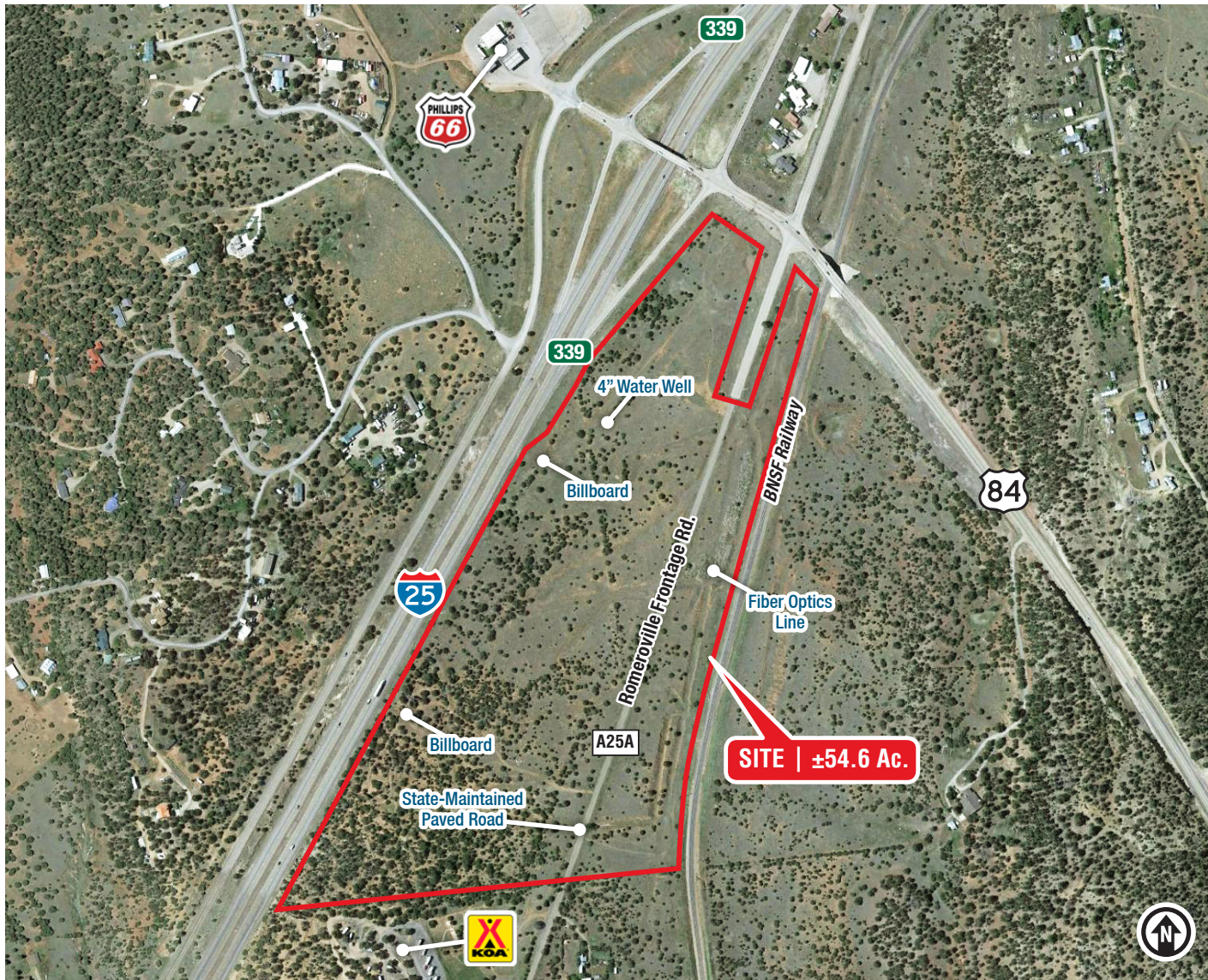
505 577 3524

Highly-Visible I-25 Land

AT THE INTERSECTION OF I-25 & US HIGHWAY 84

SEC I-25 & U.S. Hwy. 84
Romeroville, NM 87701

LOCATION



2019 Demographics	1 mile	10 mile	30 mile
Total Population	217	18,993	31,312
Average HH Income	\$37,065	\$39,860	\$42,530
Daytime Employment	13	7,398	9,370

2019 Forecasted by Esri



NAI Maestas & Ward 505 988 8081

THE INFORMATION CONTAINED IS BELIEVED RELIABLE. WHILE WE DO NOT DOUBT THE ACCURACY, WE HAVE NOT VERIFIED IT AND MAKE NO GUARANTEE, WARRANTY OR REPRESENTATION ABOUT IT. IT IS YOUR RESPONSIBILITY TO INDEPENDENTLY CONFIRM ITS ACCURACY AND COMPLETENESS. ANY PROJECTION, OPINION, ASSUMPTION OR ESTIMATED USES ARE FOR EXAMPLE ONLY AND DO NOT REPRESENT THE CURRENT OR FUTURE PERFORMANCE OF THE PROPERTY. THE VALUE OF THIS TRANSACTION TO YOU DEPENDS ON MANY FACTORS WHICH SHOULD BE EVALUATED BY YOUR TAX, FINANCIAL, AND LEGAL COUNSEL. YOU AND YOUR COUNSEL SHOULD CONDUCT A CAREFUL INDEPENDENT INVESTIGATION OF THE PROPERTY TO DETERMINE THAT IT IS SUITABLE TO YOUR NEEDS.

For more information:

Tai Bixby, CCIM
tai@gotspaceusa.com
505 577 3524