

FOR LEASE

1700 Louisiana Blvd. NE | Albuquerque, NM 87110

SEQ I-40 & Louisiana Blvd. NE

# Uptown Office Space Available

LOUISIANA PLACE

**GREAT UPTOWN RATE!**



## Lease Rate

### 1st Floor

- Suite 110: ±3,933 SF  
Lease Rate: \$17.25/SF Full Service

### 2nd Floor

- Suite 210: ±973 SF  
Lease Rate: \$17.95/SF Full Service

### 3rd Floor

- Suite 310: ±1,449 RSF  
Lease Rate: \$17.95/SF Full Service

## IDO Zoning

- MX-M, Moderate Intensity

## Property Highlights

- Spectacular views of the Sandias
- Parking: 4.3:1,000
- Ample windows
- Recently remodeled lobby and all common areas
- New exterior renovation
- Building and monument signage available for large tenant

got space

 Visit Our YouTube Channel  
to See this Property Video 

**NAI** Maestas & Ward

6801 Jefferson NE | Suite 200 | Albuquerque, NM 87109

505 878 0001 [gotSPACEUSA.com](http://gotSPACEUSA.com)    



For more information:

**Steve Kraemer, CCIM**  
[skraemer@gotSPACEUSA.com](mailto:skraemer@gotSPACEUSA.com)  
505 417 5214

**Dave Hill, CCIM**  
[dave@gotSPACEUSA.com](mailto:dave@gotSPACEUSA.com)  
505 238 6413

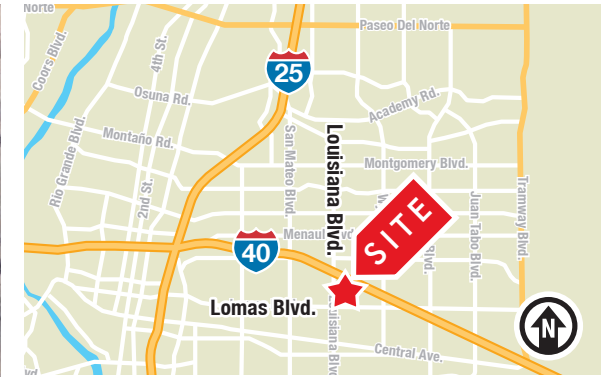
FOR LEASE

1700 Louisiana Blvd. NE | Albuquerque, NM 87110

SEQ I-40 & Louisiana Blvd. NE

# Uptown Office Space Available

## LOUISIANA PLACE



**NAI Maestas & Ward** 505 878 0001

THE INFORMATION CONTAINED IS BELIEVED RELIABLE. WHILE WE DO NOT DOUBT THE ACCURACY, WE HAVE NOT VERIFIED IT AND MAKE NO GUARANTEE, WARRANTY OR REPRESENTATION ABOUT IT. IT IS YOUR RESPONSIBILITY TO INDEPENDENTLY CONFIRM ITS ACCURACY AND COMPLETENESS. ANY PROJECTION, OPINION, ASSUMPTION OR ESTIMATED USES ARE FOR EXAMPLE ONLY AND DO NOT REPRESENT THE CURRENT OR FUTURE PERFORMANCE OF THE PROPERTY. THE VALUE OF THIS TRANSACTION TO YOU DEPENDS ON MANY FACTORS WHICH SHOULD BE EVALUATED BY YOUR TAX, FINANCIAL, AND LEGAL COUNSEL. YOU AND YOUR COUNSEL SHOULD CONDUCT A CAREFUL INDEPENDENT INVESTIGATION OF THE PROPERTY TO DETERMINE THAT IT IS SUITABLE TO YOUR NEEDS.

For more information:

**Steve Kraemer, CCIM**  
 skraemer@gotspaceusa.com  
 505 417 5214

**Dave Hill, CCIM**  
 dave@gotspaceusa.com  
 505 238 6413



**FOR LEASE**

1700 Louisiana Blvd. NE | Albuquerque, NM 87110

SEQ I-40 & Louisiana Blvd. NE

# Uptown Office Space Available

LOUISIANA PLACE

## 2nd FLOOR



Available
  Leased
  Common Area

**AVAILABLE:**  
**Suite 210: ±973 RSF**  
**\$17.95/SF Full Service**



**NAI Maestas & Ward** 505 878 0001

THE INFORMATION CONTAINED IS BELIEVED RELIABLE. WHILE WE DO NOT DOUBT THE ACCURACY, WE HAVE NOT VERIFIED IT AND MAKE NO GUARANTEE, WARRANTY OR REPRESENTATION ABOUT IT. IT IS YOUR RESPONSIBILITY TO INDEPENDENTLY CONFIRM ITS ACCURACY AND COMPLETENESS. ANY PROJECTION, OPINION, ASSUMPTION OR ESTIMATED USES ARE FOR EXAMPLE ONLY AND DO NOT REPRESENT THE CURRENT OR FUTURE PERFORMANCE OF THE PROPERTY. THE VALUE OF THIS TRANSACTION TO YOU DEPENDS ON MANY FACTORS WHICH SHOULD BE EVALUATED BY YOUR TAX, FINANCIAL, AND LEGAL COUNSEL. YOU AND YOUR COUNSEL SHOULD CONDUCT A CAREFUL INDEPENDENT INVESTIGATION OF THE PROPERTY TO DETERMINE THAT IT IS SUITABLE TO YOUR NEEDS.

For more information:

**Steve Kraemer, CCIM**  
 skraemer@gotspaceusa.com  
 505 417 5214

**Dave Hill, CCIM**  
 dave@gotspaceusa.com  
 505 238 6413

**FOR LEASE**

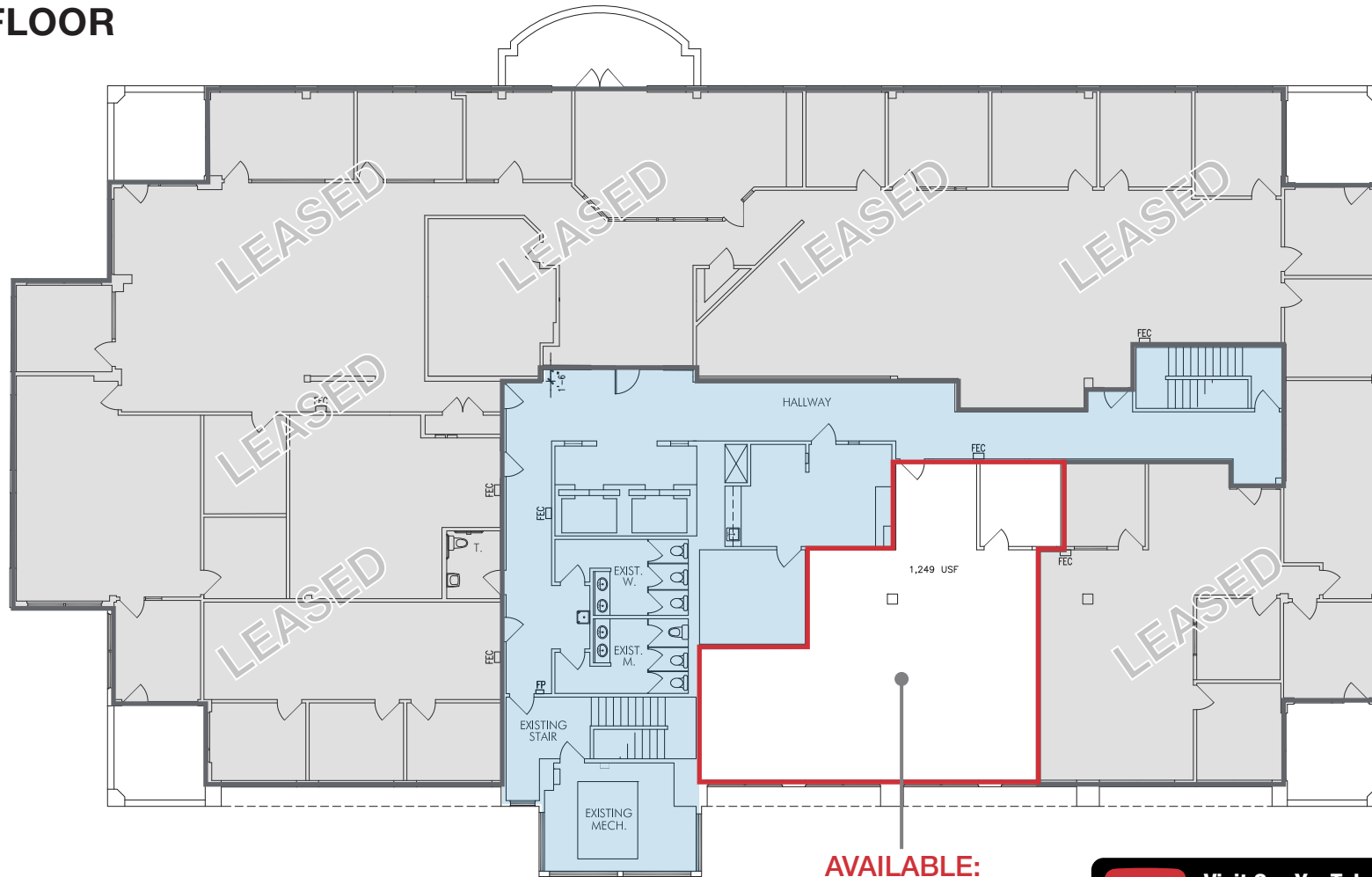
1700 Louisiana Blvd. NE | Albuquerque, NM 87110

SEQ I-40 & Louisiana Blvd. NE

# Uptown Office Space Available

LOUISIANA PLACE

## 3rd FLOOR



**AVAILABLE:**

**Suite 310: ±1,449 RSF  
\$17.95/SF Full Service**

Available
  Leased
  Common Area



[Visit Our YouTube Channel for a Video Tour of this Suite!](#)

**NAI Maestas & Ward** 505 878 0001

THE INFORMATION CONTAINED IS BELIEVED RELIABLE. WHILE WE DO NOT DOUBT THE ACCURACY, WE HAVE NOT VERIFIED IT AND MAKE NO GUARANTEE, WARRANTY OR REPRESENTATION ABOUT IT. IT IS YOUR RESPONSIBILITY TO INDEPENDENTLY CONFIRM ITS ACCURACY AND COMPLETENESS. ANY PROJECTION, OPINION, ASSUMPTION OR ESTIMATED USES ARE FOR EXAMPLE ONLY AND DO NOT REPRESENT THE CURRENT OR FUTURE PERFORMANCE OF THE PROPERTY. THE VALUE OF THIS TRANSACTION TO YOU DEPENDS ON MANY FACTORS WHICH SHOULD BE EVALUATED BY YOUR TAX, FINANCIAL, AND LEGAL COUNSEL. YOU AND YOUR COUNSEL SHOULD CONDUCT A CAREFUL INDEPENDENT INVESTIGATION OF THE PROPERTY TO DETERMINE THAT IT IS SUITABLE TO YOUR NEEDS.

For more information:

**Steve Kraemer, CCIM**  
skraemer@gotspaceusa.com  
505 417 5214

**Dave Hill, CCIM**  
dave@gotspaceusa.com  
505 238 6413

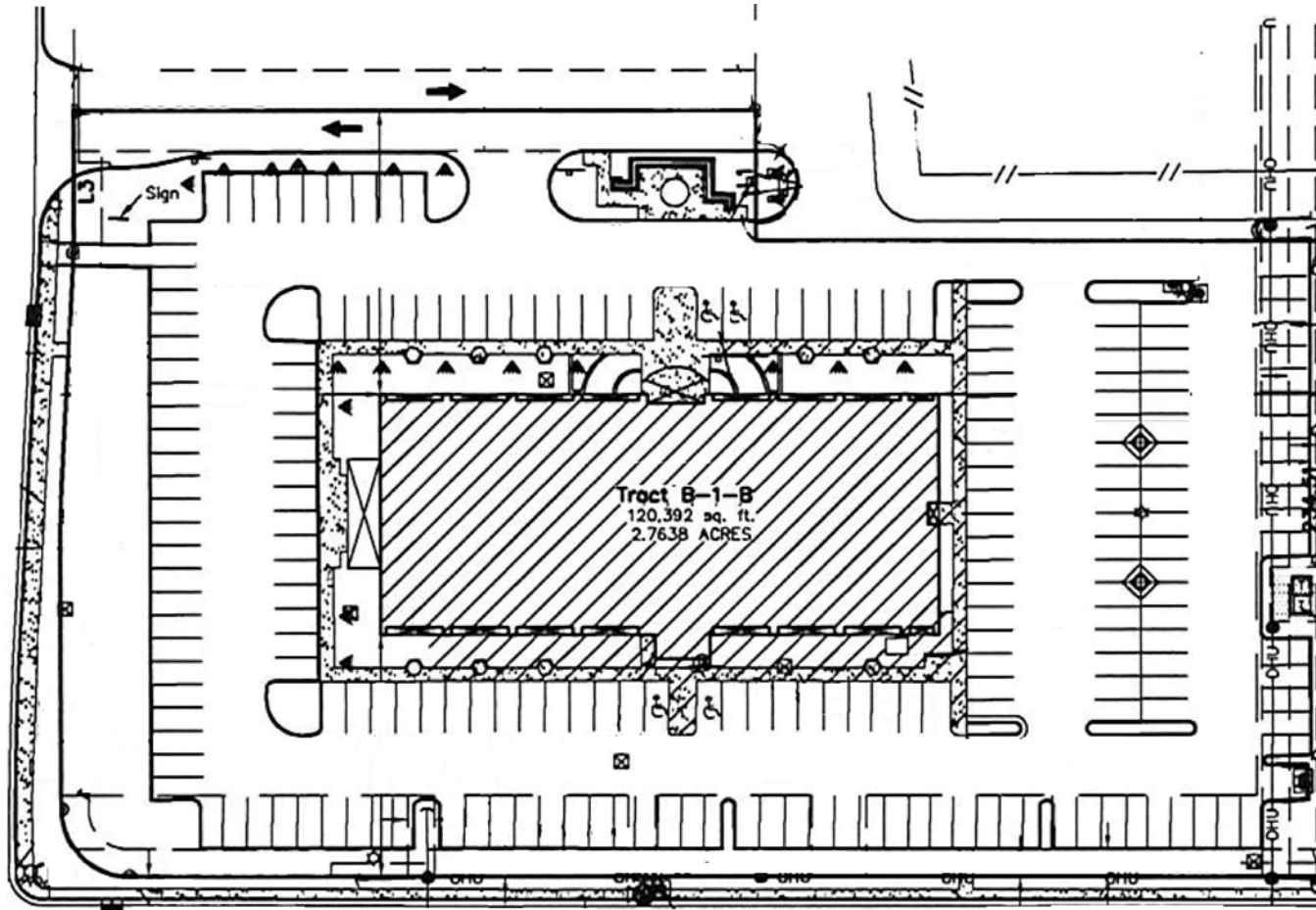
**FOR LEASE**

1700 Louisiana Blvd. NE | Albuquerque, NM 87110

SEQ I-40 & Louisiana Blvd. NE

# Uptown Office Space Available

LOUISIANA PLACE



**NAI Maestas & Ward** 505 878 0001

THE INFORMATION CONTAINED IS BELIEVED RELIABLE. WHILE WE DO NOT DOUBT THE ACCURACY, WE HAVE NOT VERIFIED IT AND MAKE NO GUARANTEE, WARRANTY OR REPRESENTATION ABOUT IT. IT IS YOUR RESPONSIBILITY TO INDEPENDENTLY CONFIRM ITS ACCURACY AND COMPLETENESS. ANY PROJECTION, OPINION, ASSUMPTION OR ESTIMATED USES ARE FOR EXAMPLE ONLY AND DO NOT REPRESENT THE CURRENT OR FUTURE PERFORMANCE OF THE PROPERTY. THE VALUE OF THIS TRANSACTION TO YOU DEPENDS ON MANY FACTORS WHICH SHOULD BE EVALUATED BY YOUR TAX, FINANCIAL, AND LEGAL COUNSEL. YOU AND YOUR COUNSEL SHOULD CONDUCT A CAREFUL INDEPENDENT INVESTIGATION OF THE PROPERTY TO DETERMINE THAT IT IS SUITABLE TO YOUR NEEDS.

**Steve Kraemer, CCIM**  
skraemer@gotspaceusa.com  
505 417 5214

For more information:

**Dave Hill, CCIM**  
dave@gotspaceusa.com  
505 238 6413

**FOR LEASE**

1700 Louisiana Blvd. NE | Albuquerque, NM 87110

SEQ I-40 & Louisiana Blvd. NE

# Uptown Office Space Available

LOUISIANA PLACE



**NAI Maestas & Ward** 505 878 0001

THE INFORMATION CONTAINED IS BELIEVED RELIABLE. WHILE WE DO NOT DOUBT THE ACCURACY, WE HAVE NOT VERIFIED IT AND MAKE NO GUARANTEE, WARRANTY OR REPRESENTATION ABOUT IT. IT IS YOUR RESPONSIBILITY TO INDEPENDENTLY CONFIRM ITS ACCURACY AND COMPLETENESS. ANY PROJECTION, OPINION, ASSUMPTION OR ESTIMATED USES ARE FOR EXAMPLE ONLY AND DO NOT REPRESENT THE CURRENT OR FUTURE PERFORMANCE OF THE PROPERTY. THE VALUE OF THIS TRANSACTION TO YOU DEPENDS ON MANY FACTORS WHICH SHOULD BE EVALUATED BY YOUR TAX, FINANCIAL, AND LEGAL COUNSEL. YOU AND YOUR COUNSEL SHOULD CONDUCT A CAREFUL INDEPENDENT INVESTIGATION OF THE PROPERTY TO DETERMINE THAT IT IS SUITABLE TO YOUR NEEDS.

For more information:

**Steve Kraemer, CCIM**  
skraemer@gotSPACEUSA.com  
505 417 5214

**Dave Hill, CCIM**  
dave@gotSPACEUSA.com  
505 238 6413