

FOREST HILL BUSINESS AIRPARK

2200 Commerce Road, Forest Hill, MD 21050
Harford County



MEDICAL/RETAIL FOR
LEASE / BUILD-TO-SUIT

PROPERTY HIGHLIGHTS:

- **Available:** 10.1 Acre Site (can be subdivided)
- **Zoning:** CI Zoning
- **Rental Rate:** Negotiable
- **Traffic Count:** 11,251 AADT (East West Hwy) / 5,262 AADT (E Jarrettsville Rd)
- **Visibility:** 800 feet of road visibility
- **Utilities:** Utilities on-site, regional storm water management off site
- **Access:** Easy access from MD Route 23

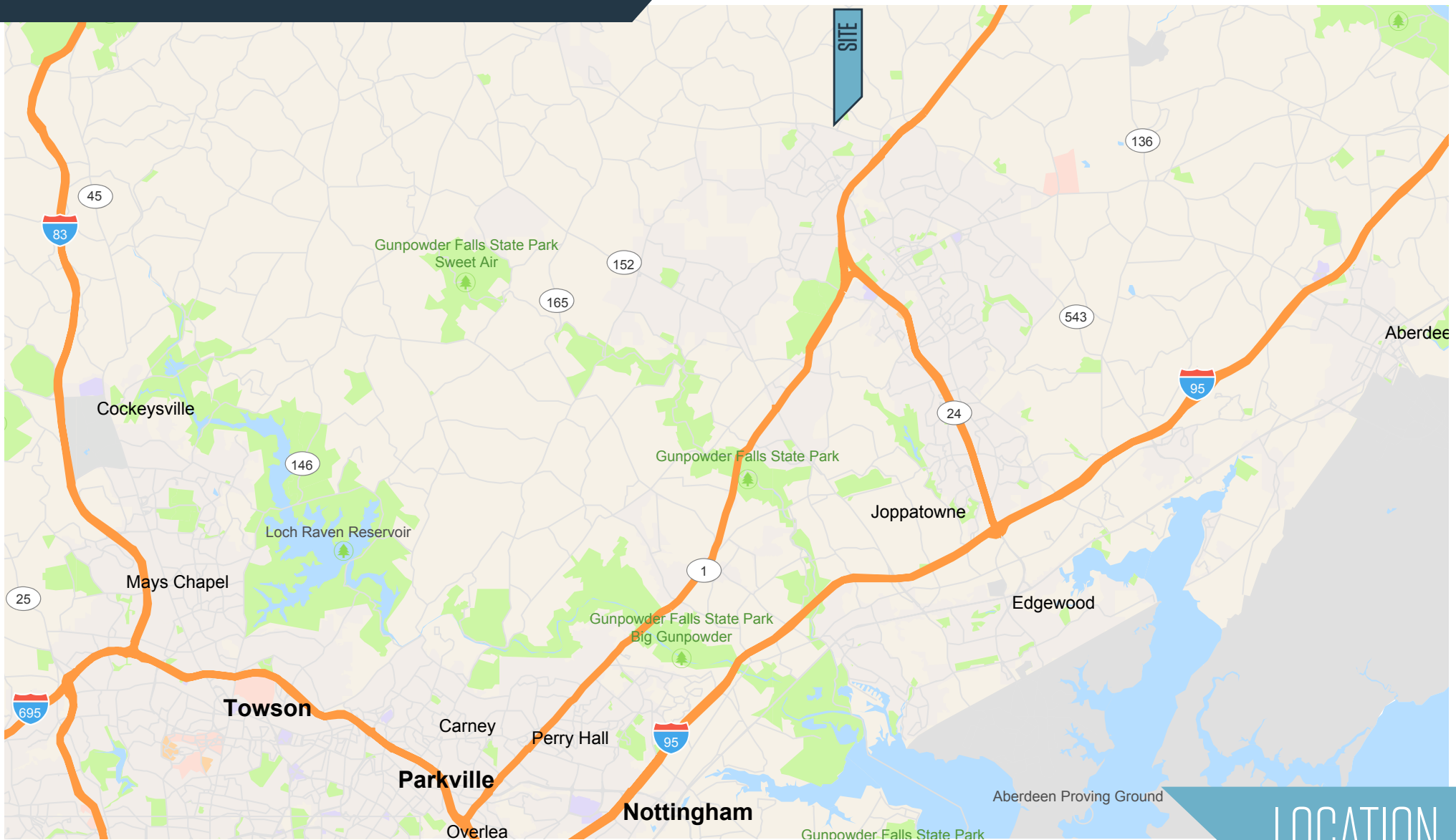
Christopher Wright
cwright@klnb.com
443-914-2600

100 West Road, Suite 505
Towson, MD 21204
klnb.com

NAI klnb

FOREST HILL BUSINESS AIRPARK

2200 Commerce Road, Forest Hill, MD 21050
Harford County



LOCATION

Christopher Wright
cwright@klnb.com
443-914-2600

100 West Road, Suite 505
Towson, MD 21204
klnb.com



FOREST HILL BUSINESS AIRPARK

2200 Commerce Road, Forest Hill, MD 21050
Harford County



AERIAL

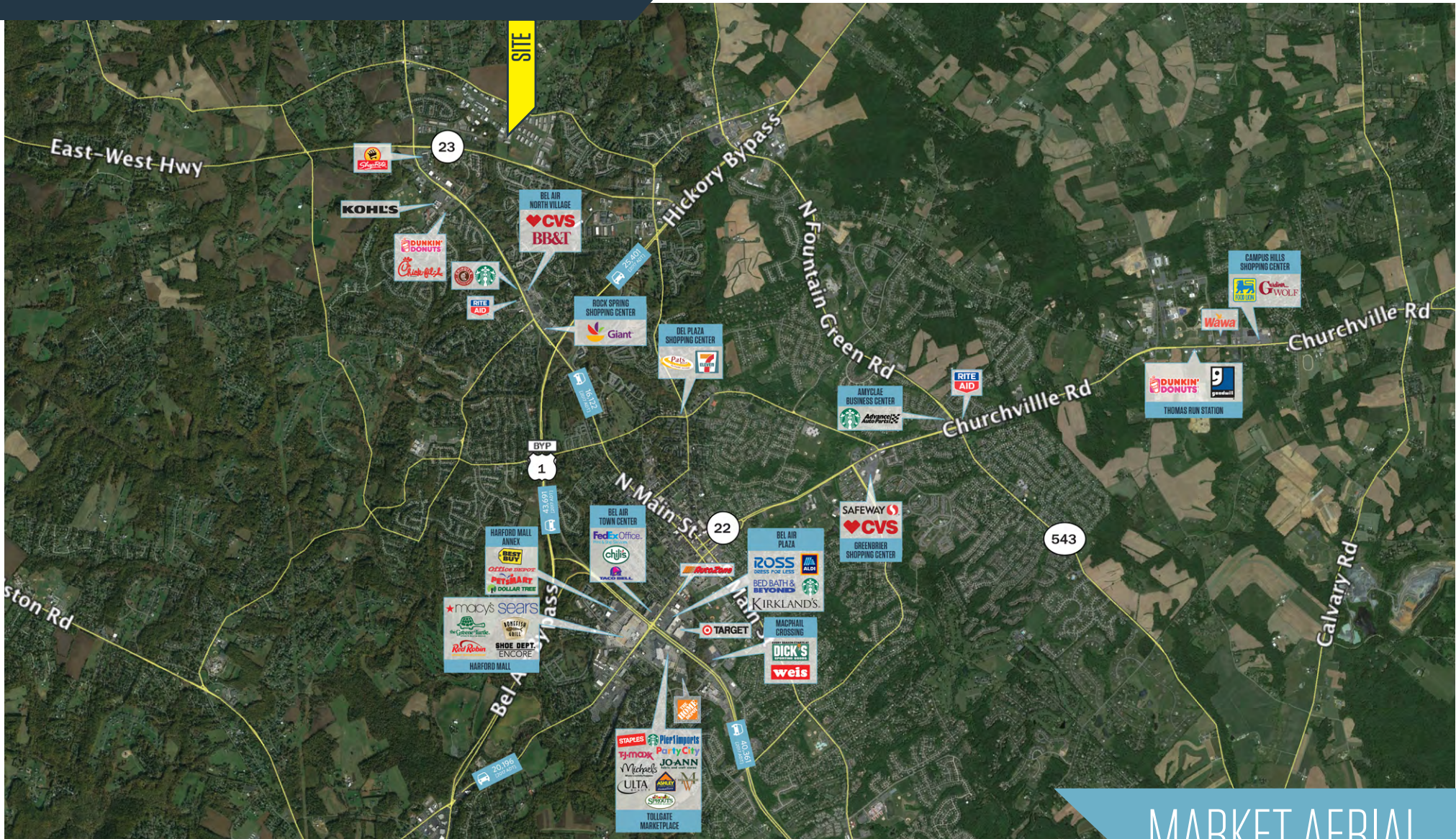
Christopher Wright
cwright@klnb.com
443-914-2600

100 West Road, Suite 505
Towson, MD 21204
klnb.com

NAklnb

FOREST HILL BUSINESS AIRPARK

2200 Commerce Road, Forest Hill, MD 21050
Harford County



MARKET AERIAL

Christopher Wright
cwright@klnb.com
443-914-2600

100 West Road, Suite 505
Towson, MD 21204
klnb.com



FOREST HILL BUSINESS AIRPARK

2200 Commerce Road, Forest Hill, MD 21050
Harford County



RENDERINGS

Christopher Wright
cwright@klnb.com
443-914-2600

100 West Road, Suite 505
Towson, MD 21204
klnb.com



FOREST HILL BUSINESS AIRPARK

2200 Commerce Road, Forest Hill, MD 21050
Harford County

[CLICK TO VIEW PROPERTY WEBSITE](#)

For More Information, Please Contact:

Christopher Wright

cwright@klnb.com

443-914-2600

100 West Road, Suite 505

Baltimore, MD 21204

klnb.com

 facebook.com/KLNB

 [@KLNBLLC](https://twitter.com/KLNBLLC)

 linkedin.com/company/klnb

 instagram.com/klnbllc

While we have no reason to doubt the accuracy of any of the information supplied, we cannot, and do not, guarantee its accuracy. All information should be independently verified prior to a purchase or lease of the property. We are not responsible for errors, omissions, misuse, or misinterpretation of information contained herein and make no warranty of any kind, express or implied, with respect to the property or any other matters.

NAI klnb