

97 LESLIE ROAD

97 Leslie Road, North East, MD 21901
Cecil County



PROPERTY HIGHLIGHTS:

- Industrial/Manufacturing
- Building SF: ±30,000 SF
- Office SF: ±4,000 SF
- Acres: ±2.967 acres
- Year Built: 1950 & refurbished in 2001
- Construction: Metal & block
- Heavy power
- Storage: Outside storage
- Loading: Four (4) 10'x12' drive in's
- Lease Rate: \$7.00/SF NNN
- Operating Expense Budget - 2021: \$1.20/SF
- Minutes from I-95
- Sale Price: \$3,200,000

Chris Wright
cwright@klnb.com
443-914-2600

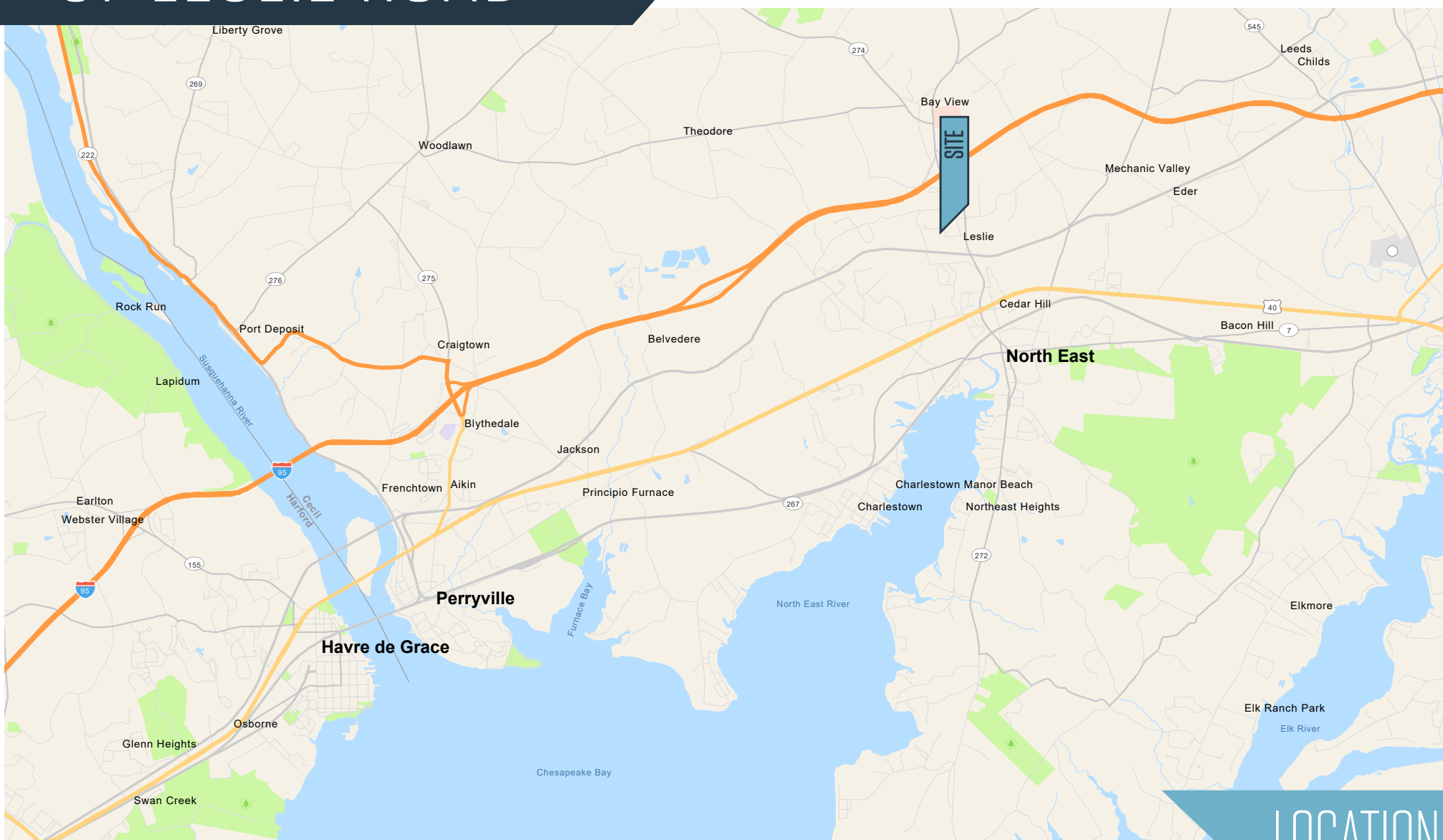
Peter Dudley
pdudley@klnb.com
443-632-2064

100 West Road, Suite 505
Towson, MD 21204
klnb.com

NAIklnb

97 LESLIE ROAD

97 Leslie Road, North East, MD 21901
Cecil County



LOCATION

Chris Wright
cwright@klnb.com
443-914-2600

Peter Dudley
pdudley@klnb.com
443-632-2064

100 West Road, Suite 505
Towson, MD 21204
klnb.com



97 LESLIE ROAD

97 Leslie Road, North East, MD 21901
Cecil County



Chris Wright
cwright@klnb.com
443-914-2600

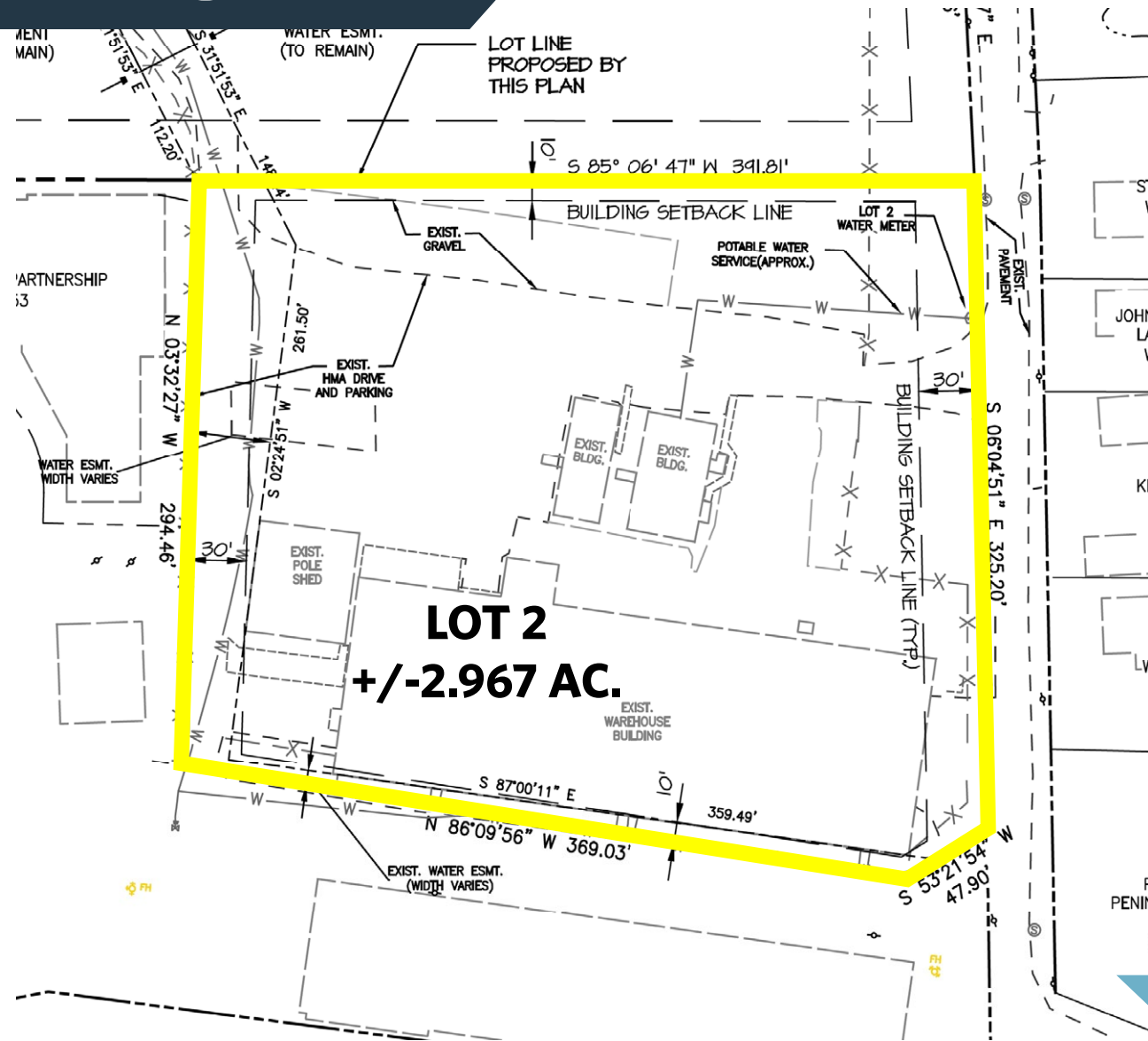
Peter Dudley
pdudley@klnb.com
443-632-2064

100 West Road, Suite 505
Towson, MD 21204
klnb.com



97 LESLIE ROAD

97 Leslie Road, North East, MD 21901
Cecil County



SITE PLAN

Chris Wright
cwright@klnb.com
443-914-2600

Peter Dudley
pdudley@klnb.com
443-632-2064

100 West Road, Suite 505
Towson, MD 21204
klnb.com

NAklnb

97 LESLIE ROAD

97 Leslie Road, North East, MD 21901
Cecil County

CLICK TO VIEW PROPERTY WEBSITE

For More Information, Please Contact:

Chris Wright

cwright@klnb.com
443-914-2600

Peter Dudley

pdudley@klnb.com
443-632-2064

100 West Road, Suite 505
Baltimore, MD 21204

klnb.com

 facebook.com/KLNB

 [@KLNBLLC](https://twitter.com/KLNBLLC)

 linkedin.com/company/klnb

 instagram.com/klnbllc

While we have no reason to doubt the accuracy of any of the information supplied, we cannot, and do not, guarantee its accuracy. All information should be independently verified prior to a purchase or lease of the property. We are not responsible for errors, omissions, misuse, or misinterpretation of information contained herein and make no warranty of any kind, express or implied, with respect to the property or any other matters.

NAI klnb