

611 EARLS ROAD

611 Earls Road, Middle River, MD 21220
Baltimore County



FOR SALE

PROPERTY HIGHLIGHTS:

- ±8.16 acres available
- **Zoning:** ML/MH
- Outside storage site
- 10 minutes from I-95/I-695
- **Sale Price:** \$1,200,000

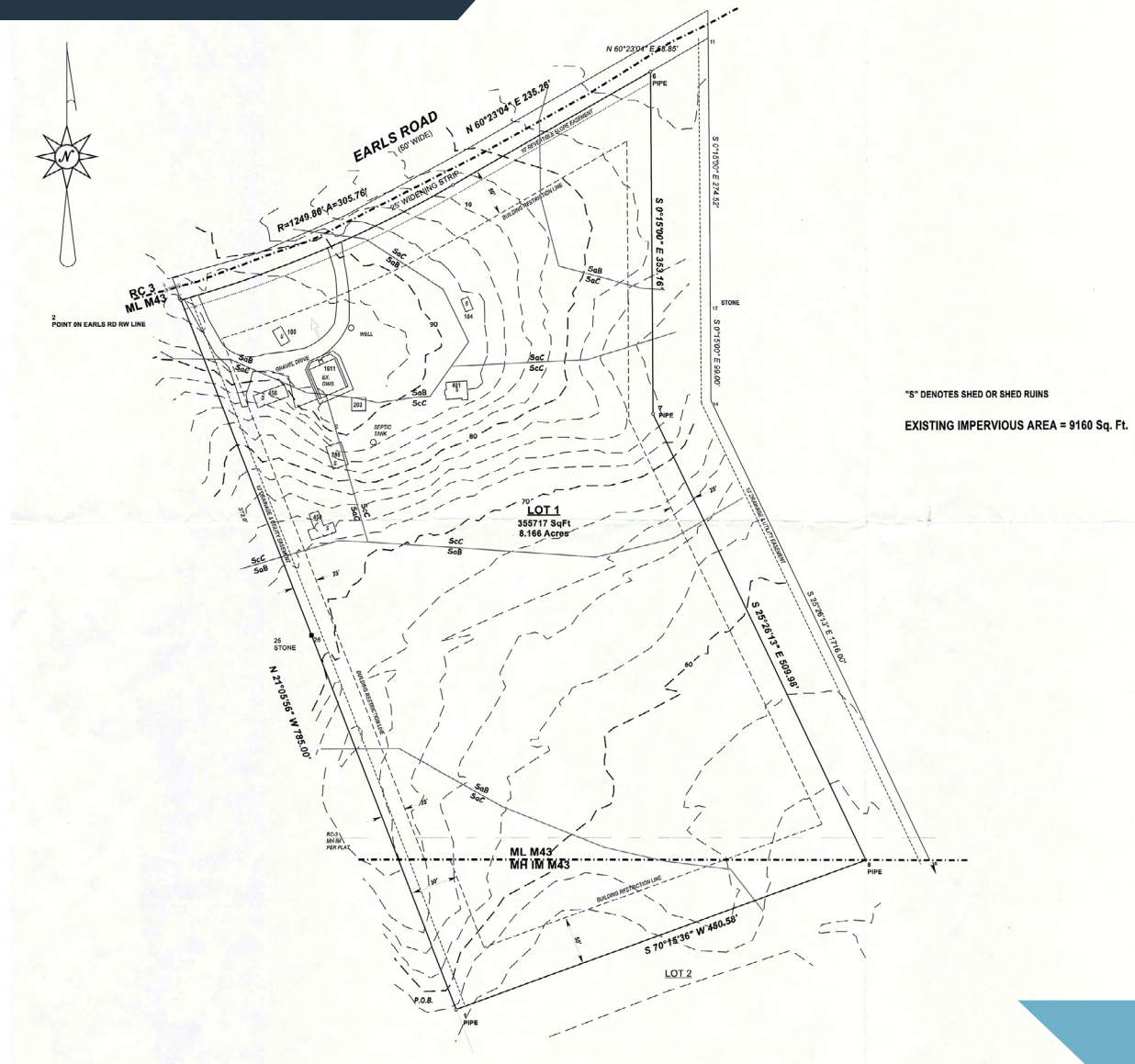
Christopher Wright
cwright@klnb.com
443-914-2600

100 West Road, Suite 505
Towson, MD 21204
klnb.com

NAI klnb

611 EARLS ROAD

611 Earls Road, Middle River, MD 21220
Baltimore County



CONCEPT PLAN

Christopher Wright
cwright@klnb.com
443-914-2600

100 West Road, Suite 505
Towson, MD 21204
klnb.com

NAI klnb

611 EARLS ROAD

611 Earls Road, Middle River, MD 21220
Baltimore County

CLICK TO VIEW PROPERTY WEBSITE

For More Information, Please Contact:

Christopher Wright

cwright@klnb.com

443-914-2600

100 West Road, Suite 505

Baltimore, MD 21204

klnb.com

 facebook.com/KLNB

 [@KLNBLLC](https://twitter.com/KLNBLLC)

 linkedin.com/company/klnb

 instagram.com/klnbllc

While we have no reason to doubt the accuracy of any of the information supplied, we cannot, and do not, guarantee its accuracy. All information should be independently verified prior to a purchase or lease of the property. We are not responsible for errors, omissions, misuse, or misinterpretation of information contained herein and make no warranty of any kind, express or implied, with respect to the property or any other matters.

NAI klnb