



Faircrest St SW

Canton, Ohio 44709

SALE PRICE	\$35,000/Acre
ACRES	22.1556
PARCEL	10001142
FRONTAGE	450'
DEPTH	1002'
TOPOGRAPHY	varies
ZONING	I-D (Industrial)
TOWNSHIP	Perry
TAXES	\$937.51/half
UTILITIES	All Available
INTERCHANGE	I-77
DISTANCE	Less than 1 mile

*Comes with 100% 10 year tax abatement already in place.

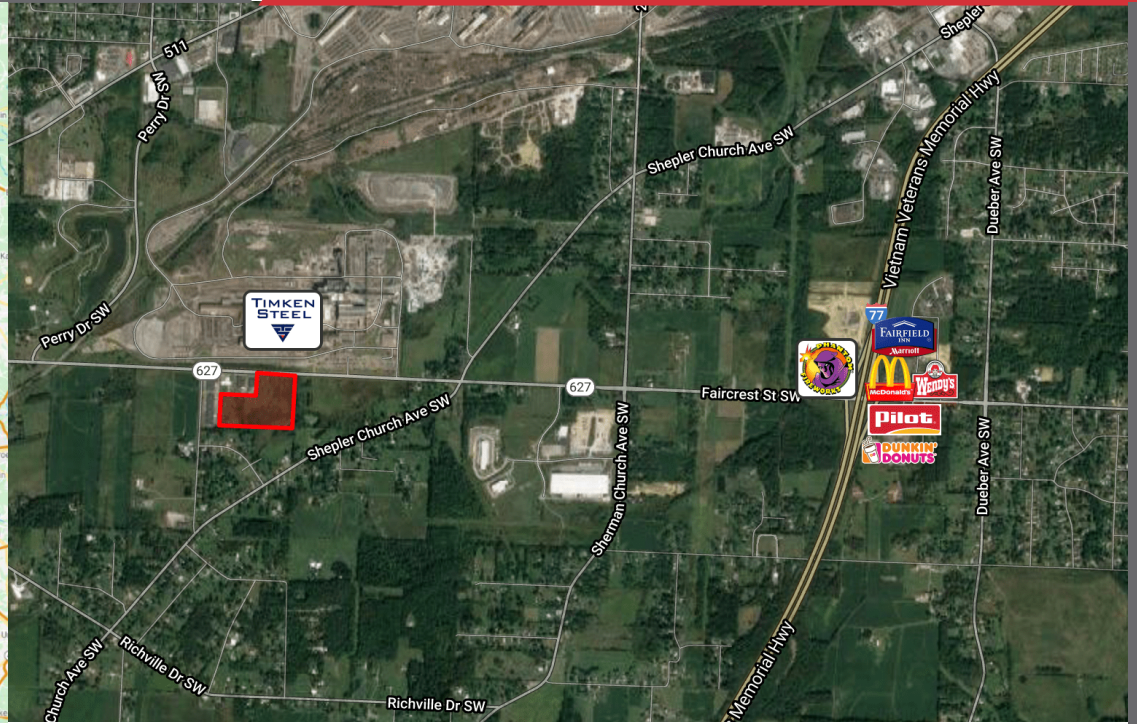
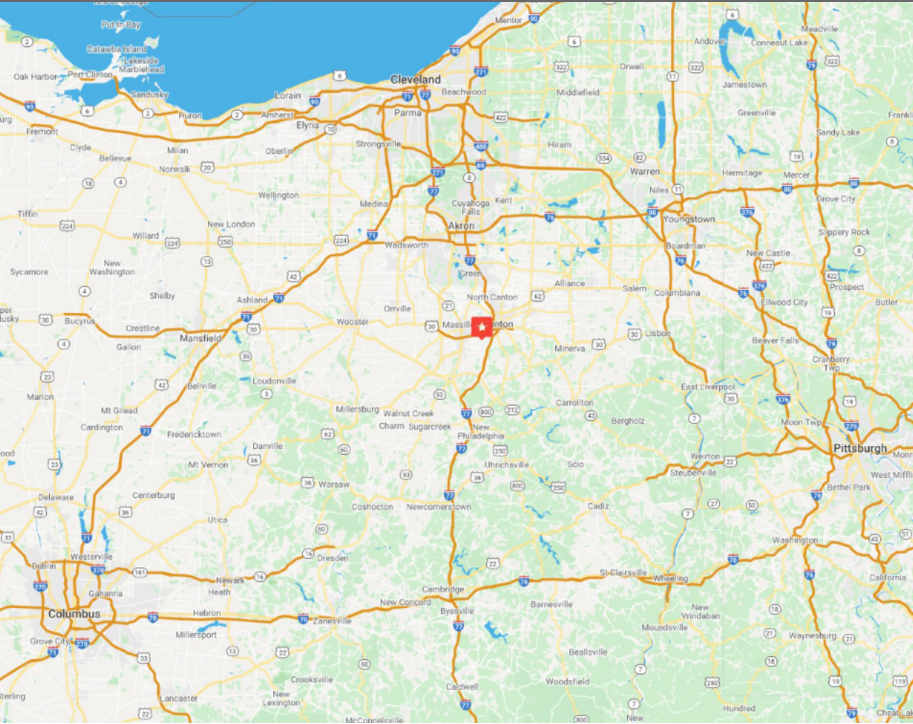
For more information:

Dan Spring, SIOR

330 966 8800 • dan@naispring.com

NO WARRANTY OR REPRESENTATION, EXPRESS OR IMPLIED, IS MADE AS TO THE ACCURACY OF THE INFORMATION CONTAINED HEREIN, AND THE SAME IS SUBMITTED SUBJECT TO ERRORS, OMISSIONS, CHANGE OF PRICE, RENTAL OR OTHER CONDITIONS, PRIOR SALE, LEASE OR FINANCING, OR WITHDRAWAL WITHOUT NOTICE, AND OF ANY SPECIAL LISTING CONDITIONS IMPOSED BY OUR PRINCIPALS NO WARRANTIES OR REPRESENTATIONS ARE MADE AS TO THE CONDITION OF THE PROPERTY OR ANY HAZARDS CONTAINED THEREIN ARE ANY TO BE IMPLIED.

8234 Pittsburg Ave NW
North Canton, OH 44720
+1 330 966 8800
naispring.com.com



Driving Distance to Major Cities from Property

CANTON, OH	6 Miles
AKRON, OH	30 Miles
CLEVELAND, OH	65 Miles
YOUNGSTOWN, OH	63 Miles
COLUMBUS, OH	123 Miles
PITTSBURGH, PA	97 Miles

Property Details

- Well located industrial land adjacent to Timken Supplier City.
- Owner to approve use.
- Owner will consider subdividing,
- ***Comes with 100% 10 year tax abatement already in place.**

**Based on CRA#5 in Stark county. Buyer needs to verify that they qualify.*

8234 Pittsburg Ave NW
 North Canton, OH 44720
 +1 330 966 8800
naispring.com.com