

**FOR SALE**

Reading Vacant Land Parcels | South Valley, NM 87105

NWQ Reading & Coso Ave. SW

# Contractor-Sized Industrial Parcels

M-1 ZONED:  
BERNALILLO COUNTY



**SALE PRICE** \$2.40/SF

**AVAILABLE**

- Parcel A: ±2.97 Acres \$310,495
- Parcel B: ±2.78 Acres \$290,632
- Parcel C: ±3.72 Acres \$388,903
- Parcel D: ±4.09 Acres \$427,584
- Parcel E: ±3.29 Acres \$343,949
- Parcel F: ±4.09 Acres \$427,584

**ZONING** M-1, Bernalillo County

**PROPERTY HIGHLIGHTS**

- Primary Access via Reading Ave.
- I-25 Access via Broadway
- Grade Level
- Neighboring Businesses:
  - Kelly Cable
  - Waste Management
  - Pace Iron Works
  - Albuquerque Underground Utility
  - Salls Brothers Construction
- Platted, individual lots

got space

**NAI SunVista**

6801 Jefferson NE | Suite 200 | Albuquerque, NM 87109

505 878 0001 [sunnvista.com](http://sunnvista.com)



**Riley McKee**  
riley@sunnvista.com  
505 379 1549

**Jim Wible, CCIM**  
jimw@sunnvista.com  
505 400 6857

FOR MORE INFORMATION:

**Keith Meyer, CCIM, SIOR**  
keithmeyer@sunnvista.com  
505 715 3228

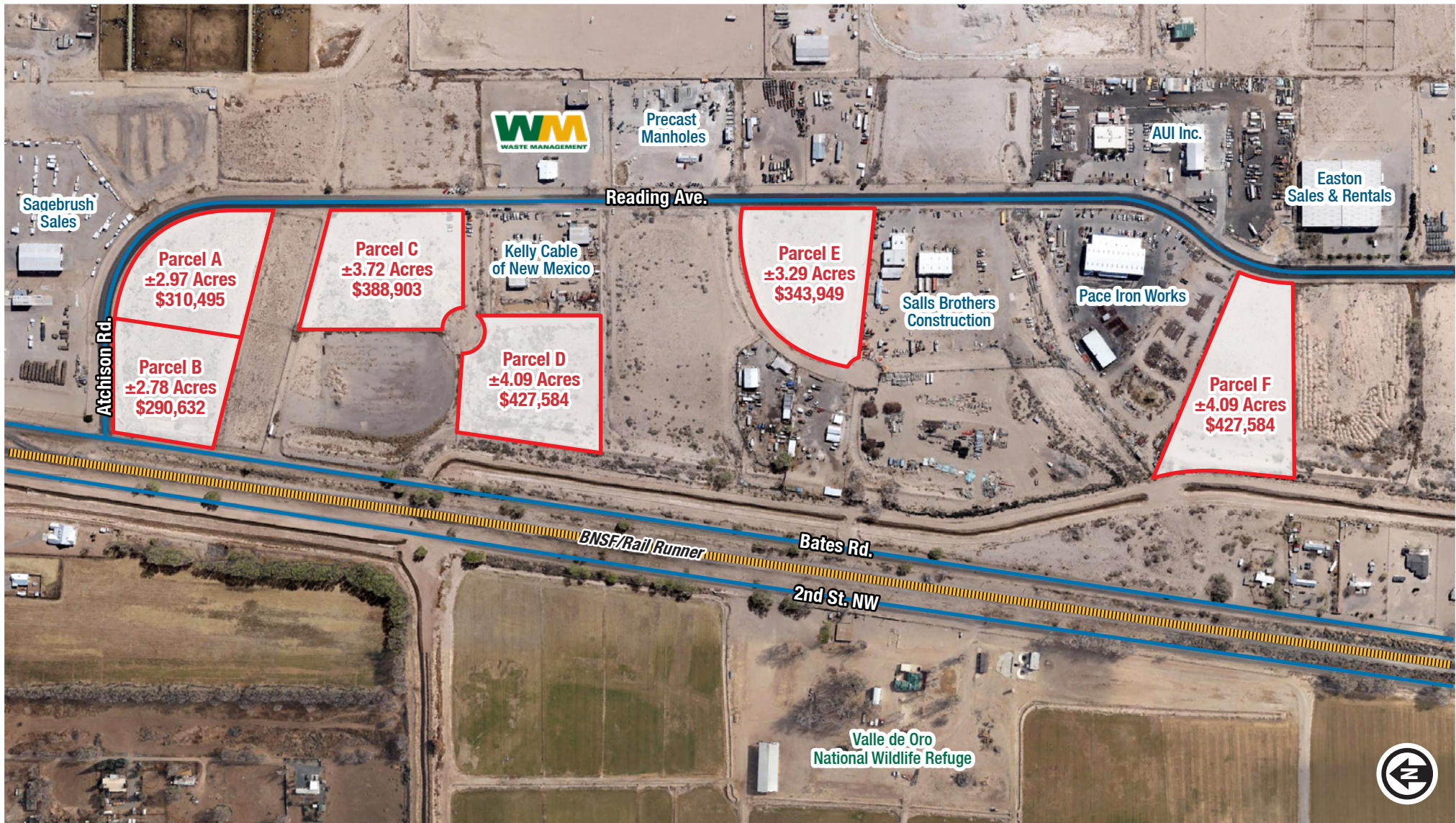
**FOR SALE**

Reading Vacant Land Parcels | South Valley, NM 87105

NWQ Reading & Coso Ave. SW

# Contractor-Sized Industrial Parcels

M-1 ZONED:  
BERNALILLO COUNTY



**NAI SunVista** 505 878 0001 [sunvista.com](http://sunvista.com)

THE INFORMATION CONTAINED IS BELIEVED RELIABLE. WHILE WE DO NOT DOUBT THE ACCURACY, WE HAVE NOT VERIFIED IT AND MAKE NO GUARANTEE, WARRANTY OR REPRESENTATION ABOUT IT. IT IS YOUR RESPONSIBILITY TO INDEPENDENTLY CONFIRM ITS ACCURACY AND COMPLETENESS. ANY PROJECTION, OPINION, ASSUMPTION OR ESTIMATED USES ARE FOR EXAMPLE ONLY AND DO NOT REPRESENT THE CURRENT OR FUTURE PERFORMANCE OF THE PROPERTY. THE VALUE OF THIS TRANSACTION TO YOU DEPENDS ON MANY FACTORS WHICH SHOULD BE EVALUATED BY YOUR TAX, FINANCIAL, AND LEGAL COUNSEL. YOU AND YOUR COUNSEL SHOULD CONDUCT A CAREFUL INDEPENDENT INVESTIGATION OF THE PROPERTY TO DETERMINE THAT IT IS SUITABLE TO YOUR NEEDS.

**Riley McKee**  
[riley@sunvista.com](mailto:riley@sunvista.com)  
505 379 1549

**Jim Wible, CCIM**  
[jimw@sunvista.com](mailto:jimw@sunvista.com)  
505 400 6857

**Keith Meyer, CCIM, SIOR**  
[keithmeyer@sunvista.com](mailto:keithmeyer@sunvista.com)  
505 715 3228

FOR MORE INFORMATION: